

# Animation Effects

You can enhance the appearance of slides through the use of animation effects. For example, you can make text fly onto the screen one point at a time, dim after it has been viewed, make graphics move around the screen or fade in and out, and add sounds to objects.

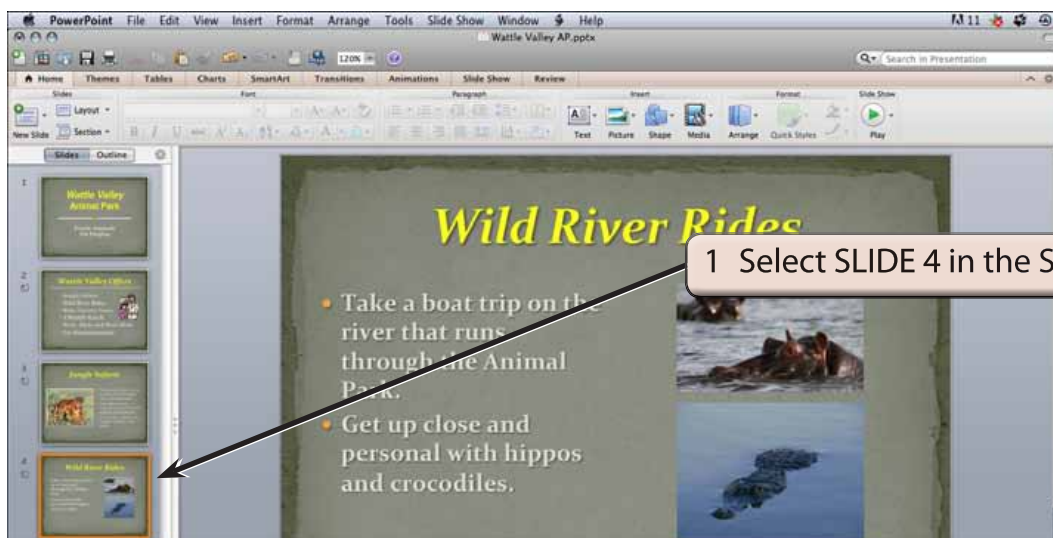
## Loading the Presentation

- 1 Load Microsoft PowerPoint and cancel the PRESENTATION GALLERY or close the current presentation.
- 2 Click on the OPEN A PRESENTATION icon in the STANDARD TOOLBAR.
- 3 Access your STORAGE folder and open the WATTLE VALLEY AP file.

## Animating Text

### A Text Entrance

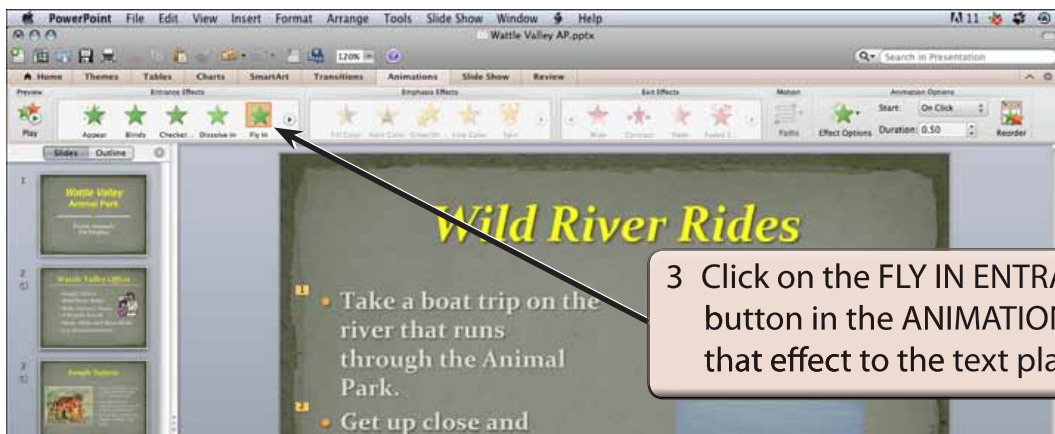
You can apply effects that allow text to animate as it enters the slide.





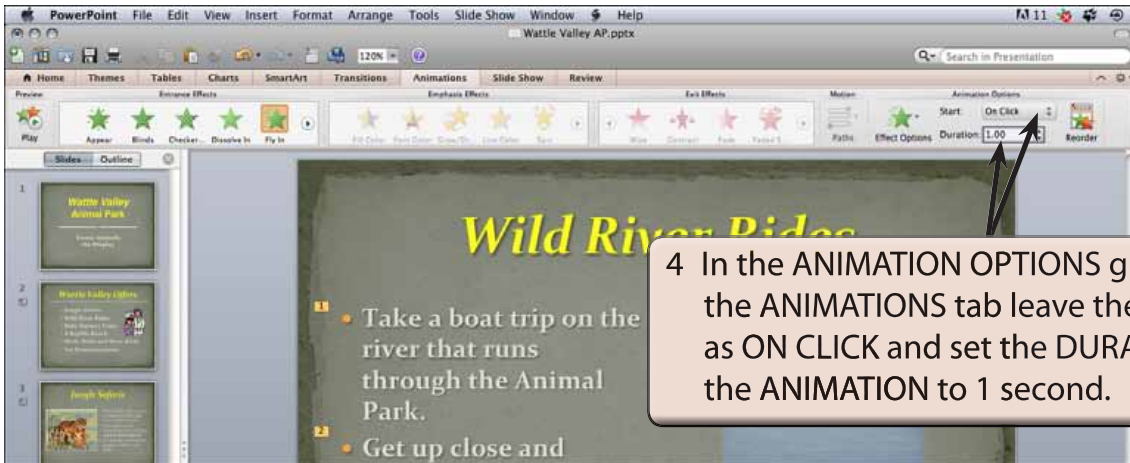
2 Click in the LEFT CONTENT placeholder to select it and open the ANIMATIONS tab of the RIBBON.

**NOTE:** The animations in the ANIMATIONS tab of the RIBBON are divided into Entrance Effects, Emphasis Effects, Exit Effects and Motion Paths. You can use the arrow at the right of each group to display more effects.



3 Click on the FLY IN ENTRANCE EFFECT button in the ANIMATIONS tab to apply that effect to the text placeholder.

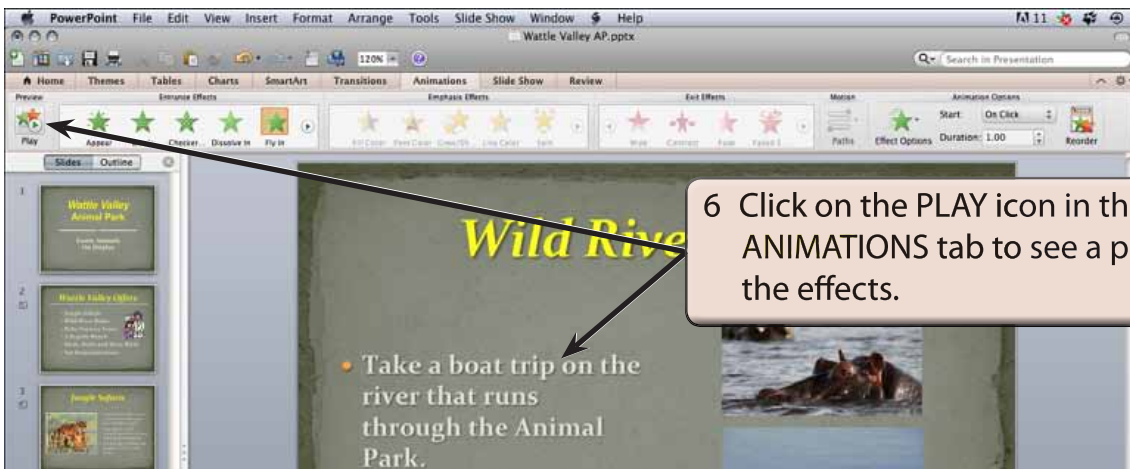
**NOTE:** The numbers 1 and 2 are added to the points in the text placeholder. These numbers allow you alter the animation of the individual points if you wish to.



4 In the ANIMATION OPTIONS group of the ANIMATIONS tab leave the START as ON CLICK and set the DURATION of the ANIMATION to 1 second.



5 Click on the EFFECT OPTIONS icon and set it to FROM BOTTOM LEFT.



6 Click on the PLAY icon in the ANIMATIONS tab to see a preview of the effects.

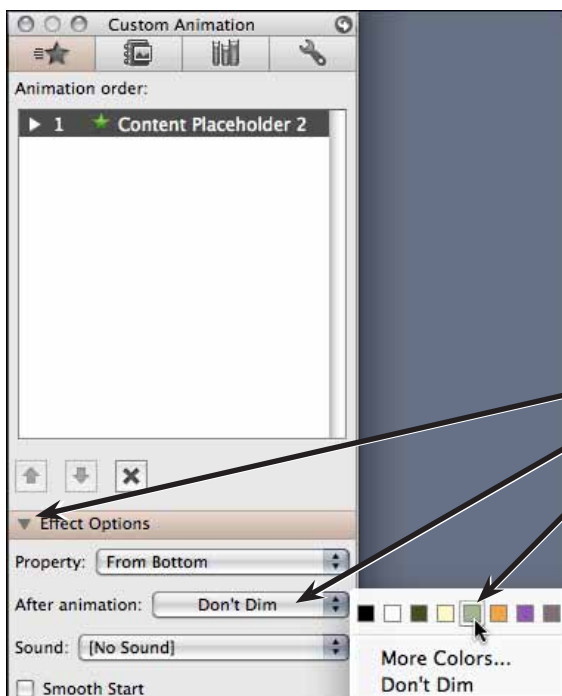
## B The Custom Animation Palette

There are extra adjustments that can be made to animations by opening the CUSTOM ANIMATION palette.



1 Click on the SHOW OR HIDE THE TOOLBOX icon in the STANDARD TOOLBAR to open the CUSTOM ANIMATION palette.

**NOTE:** You can drag the CUSTOM ANIMATION palette by its title bar to an appropriate position on the screen so that it does not cover too much of the slide.



2 In the EFFECT OPTIONS section of the CUSTOM ANIMATION palette set the AFTER ANIMATION box to a grey colour to dim the text after it appears on the screen.