

# Adding Movie Clips to Slides

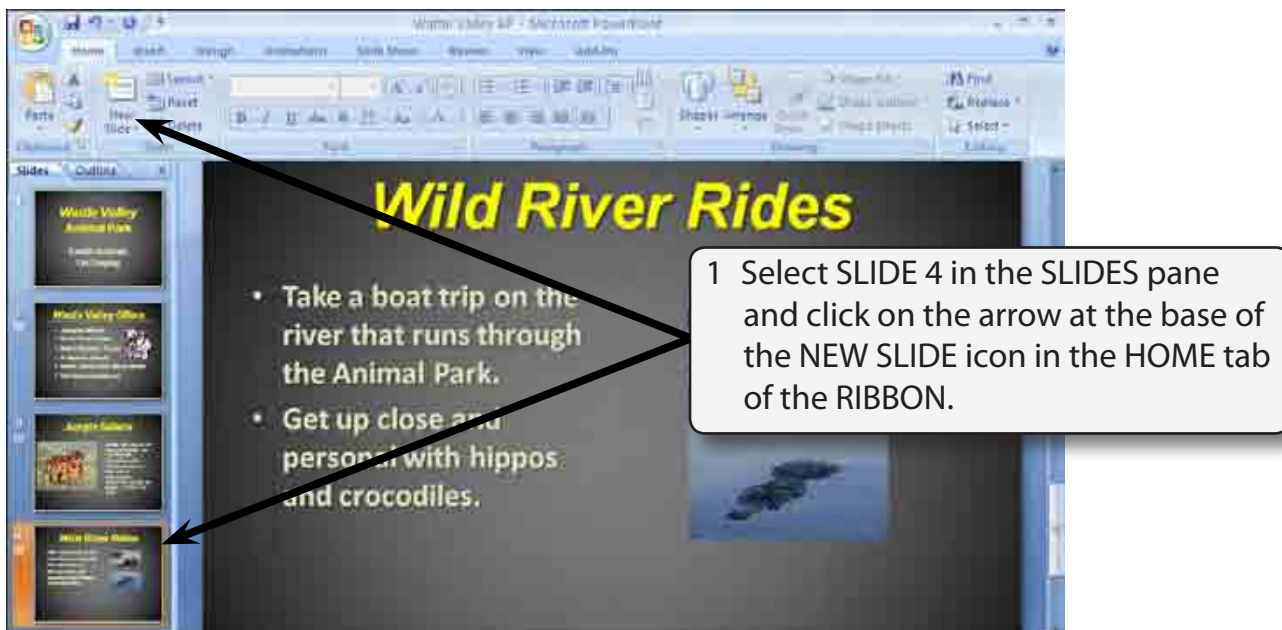
Movie clips can be included in slides and set to play when the slide is viewed or when the mouse is clicked on the clip.

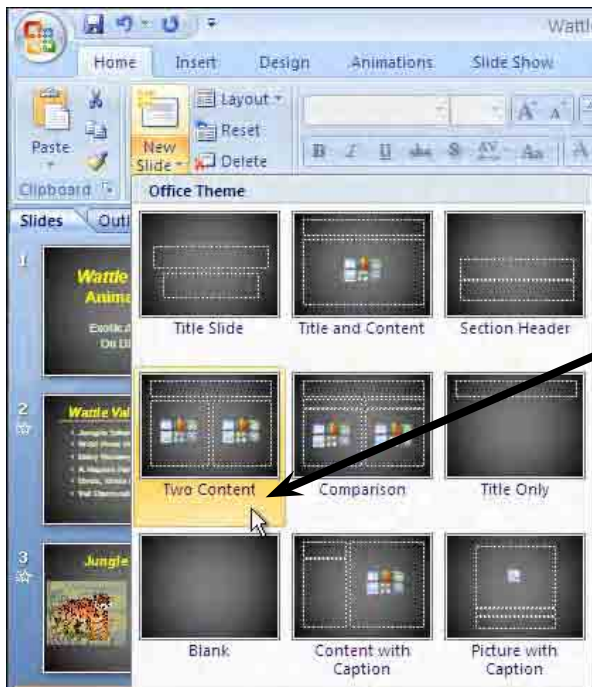
## Loading the Presentation

- 1 Load Microsoft PowerPoint or close the current presentation.
- 2 Display the OFFICE BUTTON and select OPEN.
- 3 Access your STORAGE folder and open the WATTLE VALLEY AP file.

## Creating a New Slide

### A Selecting the Layout





2 Select the TWO CONTENT slide layout.

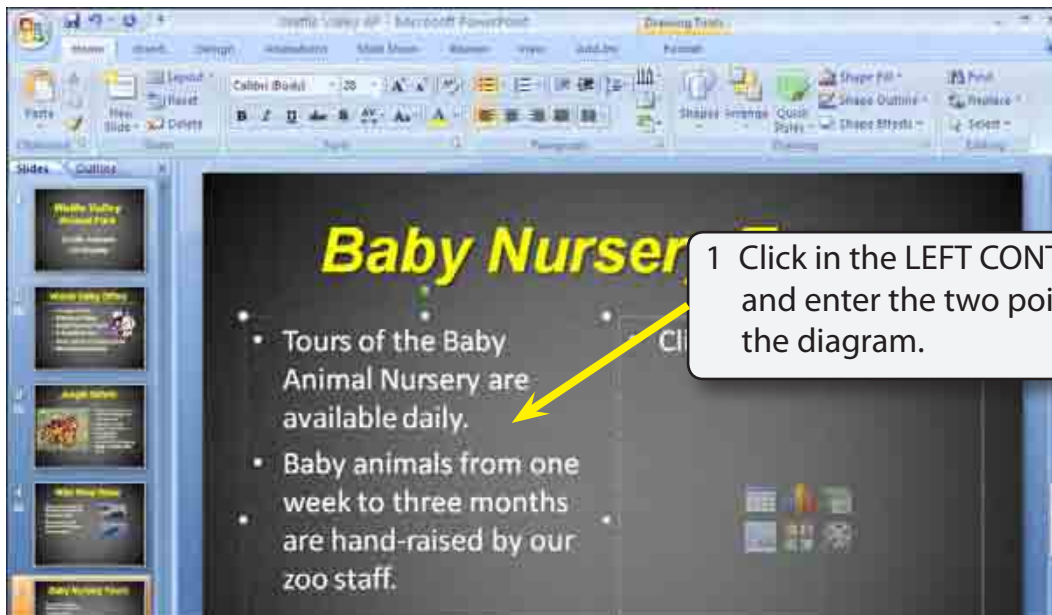
### B Entering the Slide Title



1 Click in the CLICK TO ADD TITLE placeholder and enter the title:  
**Baby Nursery Tours**

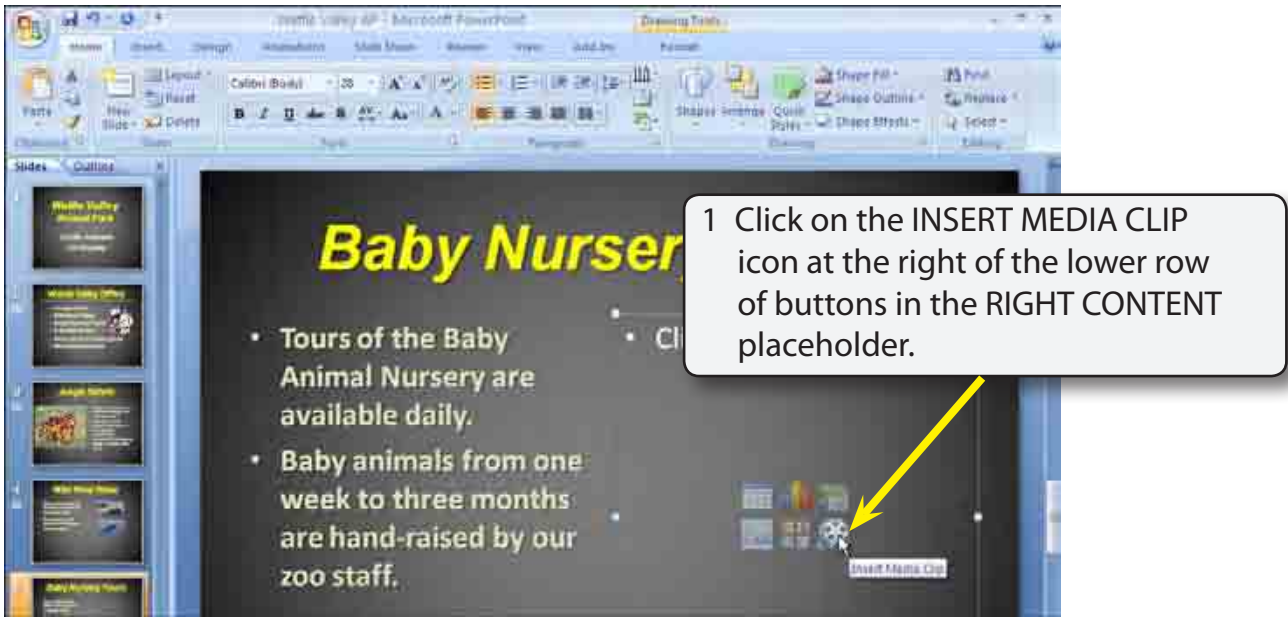
2 Highlight the text and format it to ARIAL, 54 point, BOLD, ITALIC, TEXT SHADOW and YELLOW.

## C Adding the Text

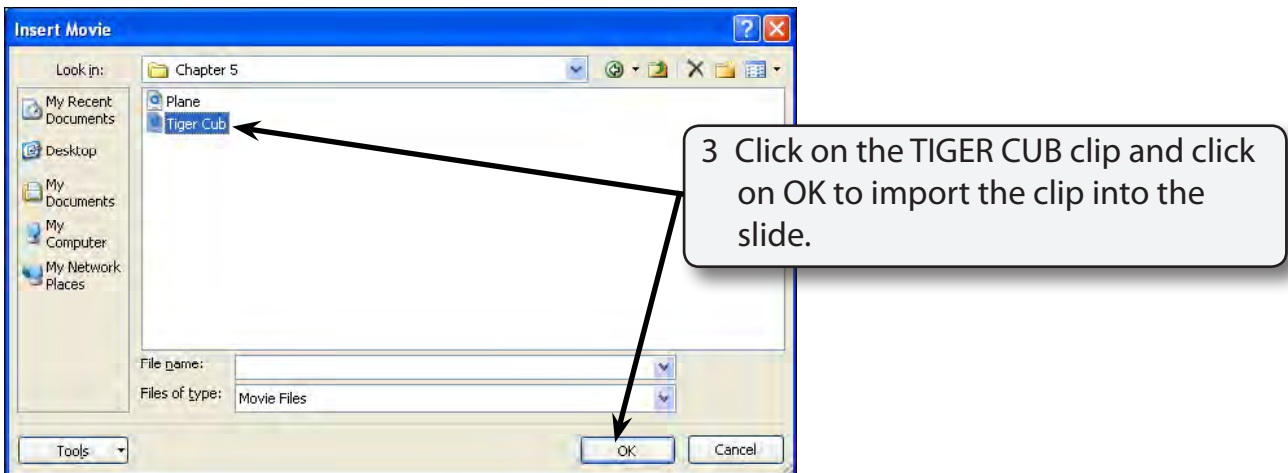


## D Inserting the Movie Clip

A sample movie clip will be imported. However, your school may have better movie clips for you to use.



2 Access the PP2007 SUPPORT FILES and open the CHAPTER 5 folder.



**NOTE:** Microsoft does supply some movie clips with PowerPoint that you may prefer to use or insert a movie clip from your school's movie clips library.