

Animation Effects

You can enhance the appearance of slides through the use of animation effects. For example, you can make text fly onto the screen one point at a time, dim after it has been viewed, make graphics move around the screen or fade in and out, and add sounds to objects.

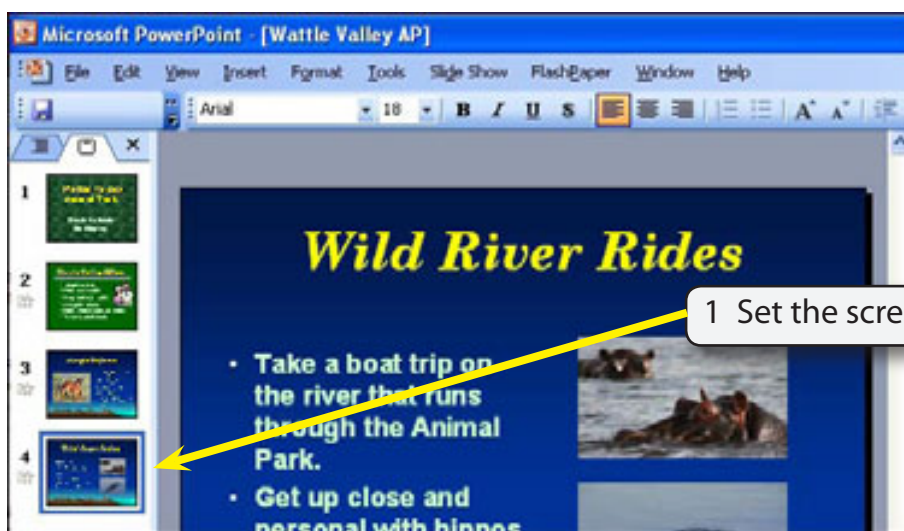
Loading the Presentation

- 1 Load Microsoft PowerPoint or close the current presentation.
- 2 Display the FILE menu and select OPEN.
- 3 Access your STORAGE folder and open the WATTLE VALLEY AP file.

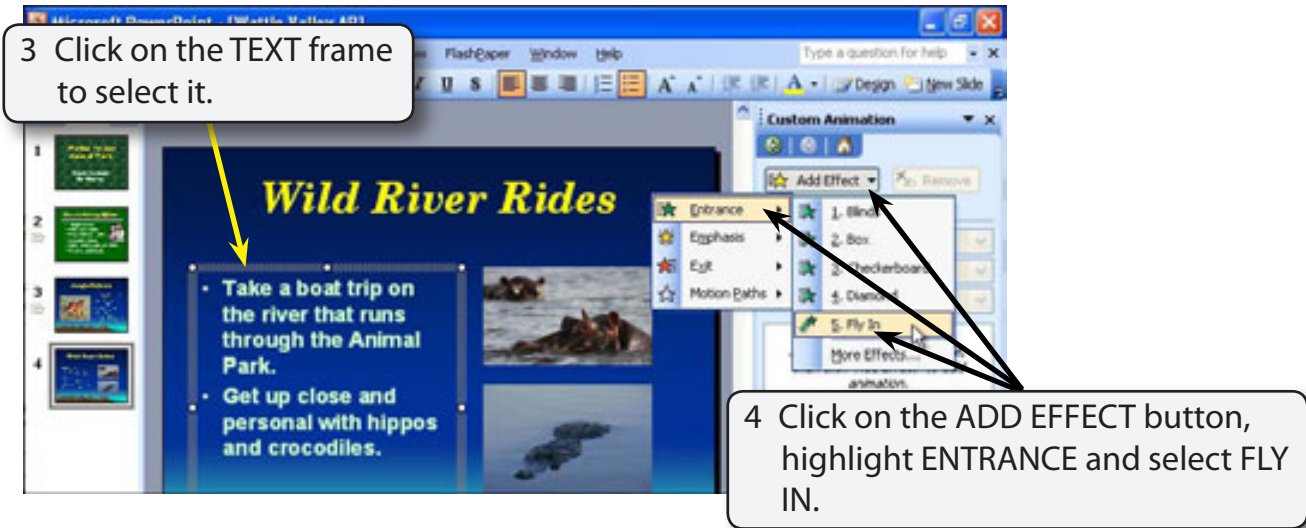
Animating Text

A Text Entrance

You can apply effects that allow text to animate as it enters the slide.

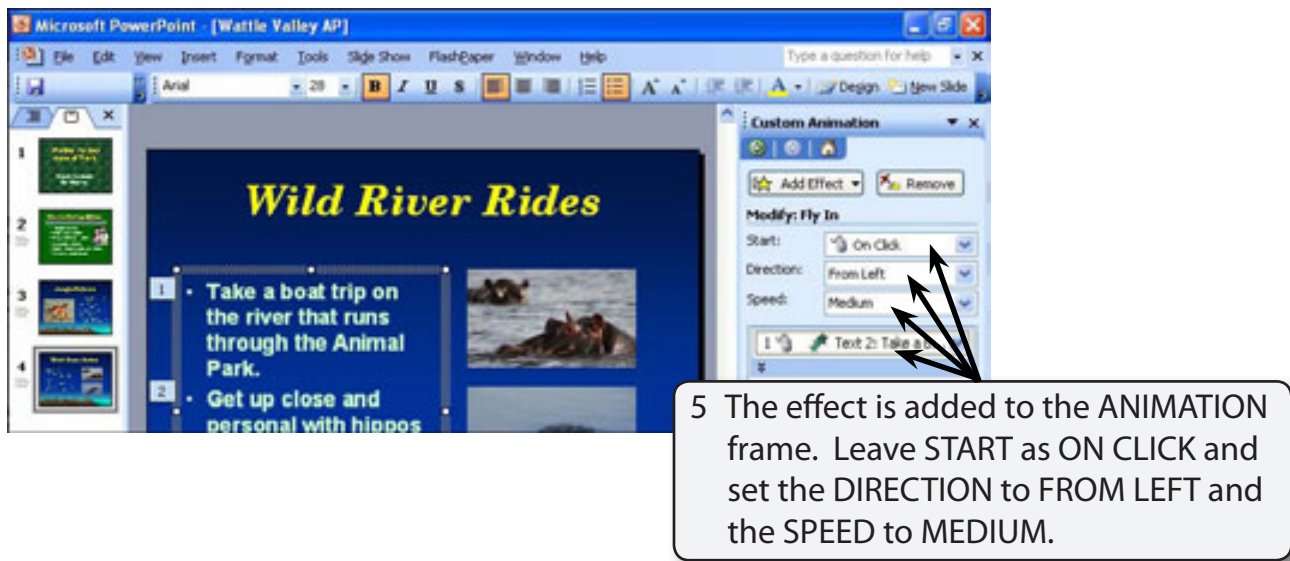


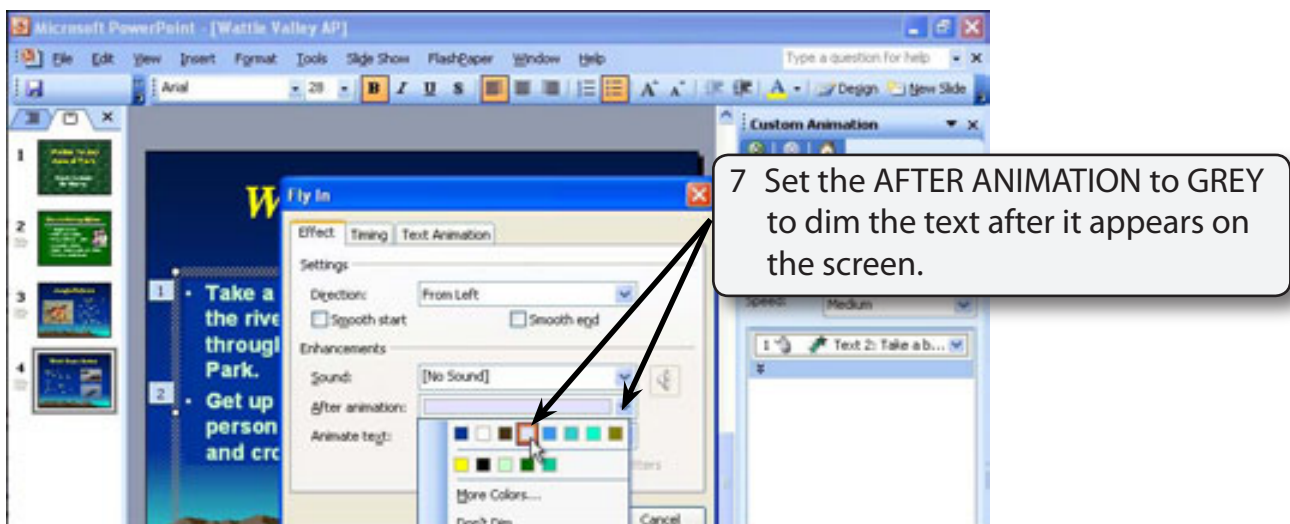
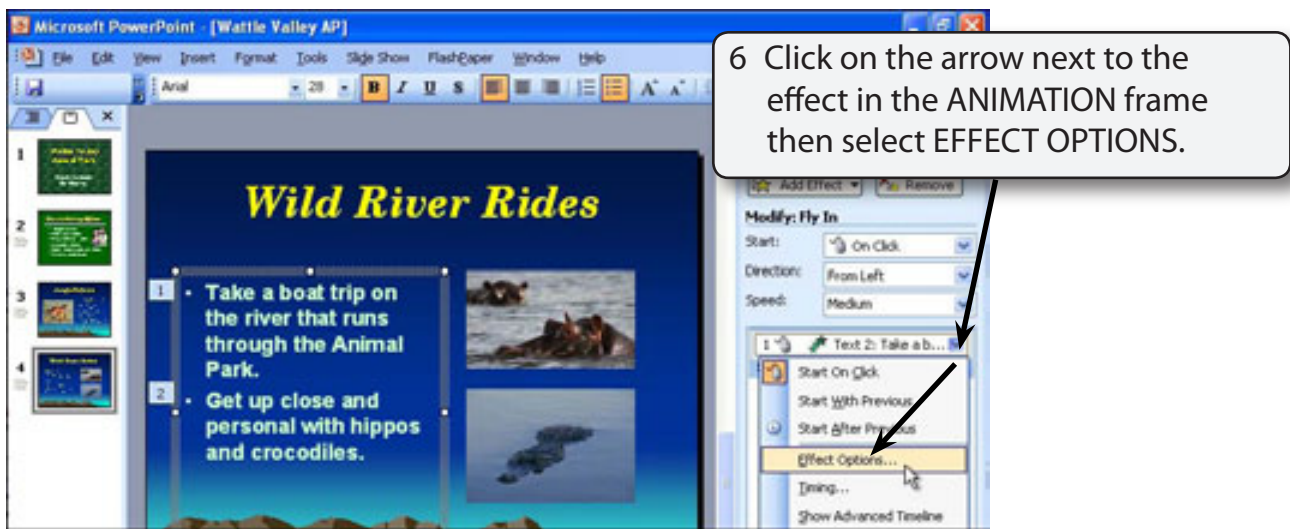
- 2 Display the SLIDE SHOW menu and select CUSTOM ANIMATION and the TASK pane will show the animation options.



NOTE:

- i Numbers are added to each text point and each can be animated individually.
- ii You can also select CUSTOM ANIMATION from the TASK PANE drop down menu.



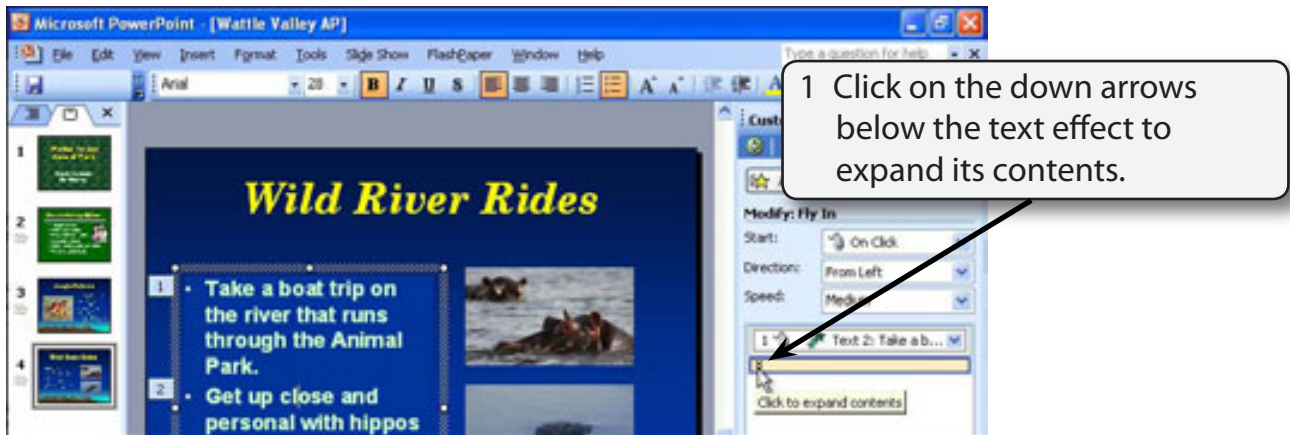


NOTE: You can also adjust the **TIMING** and **TEXT ANIMATION** from the **FLY IN** dialogue box.

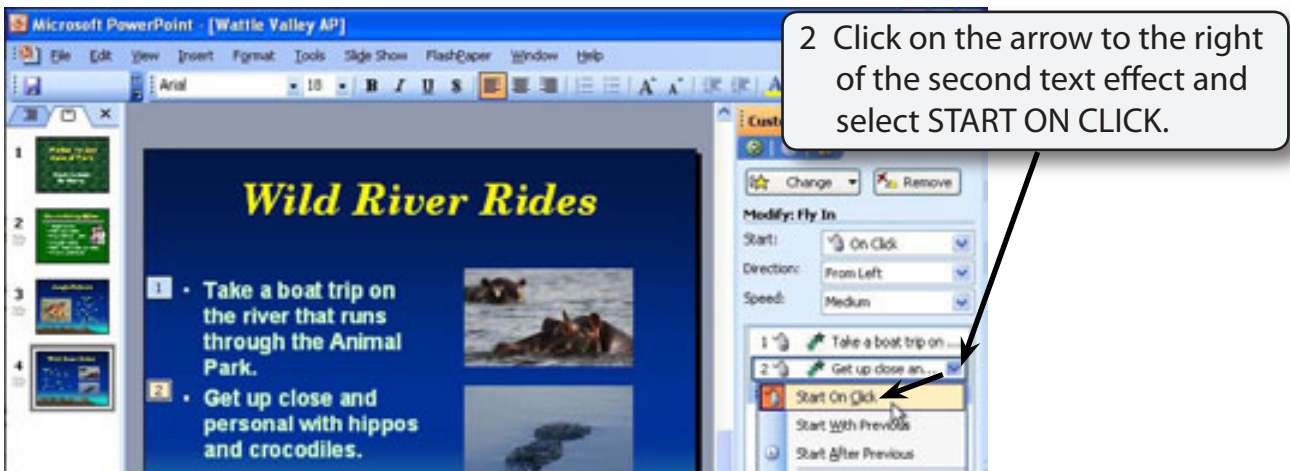
- 8 Select OK to accept the change.
- 9 Click on the PLAY button at the bottom of the TASK pane to preview the effect.

B Animating Just One Text Point

Often in a presentation you want only one point to be added to the screen at a time, then the next point added when you are ready for it.



NOTE: Both text points should be displayed in the ANIMATION frame.



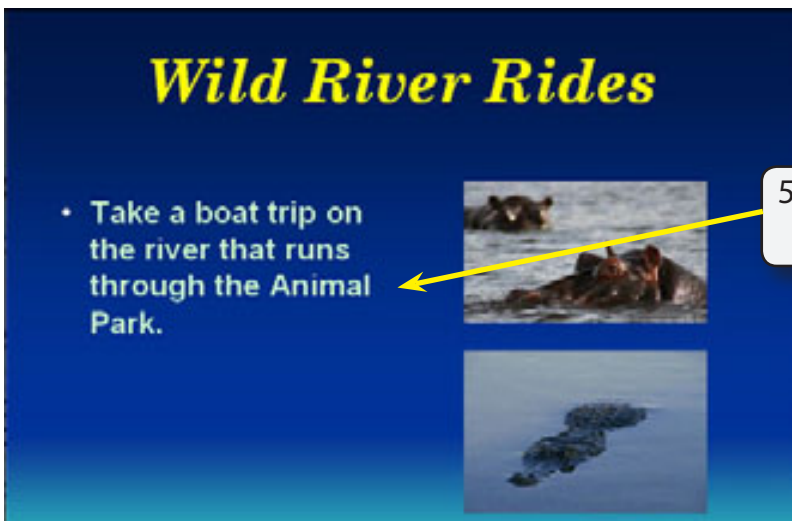
NOTE:

- i You can also change animation effects in the MODIFY section of the TASK PANE.
- ii Each effect is given a number to indicate the order that they will be played.

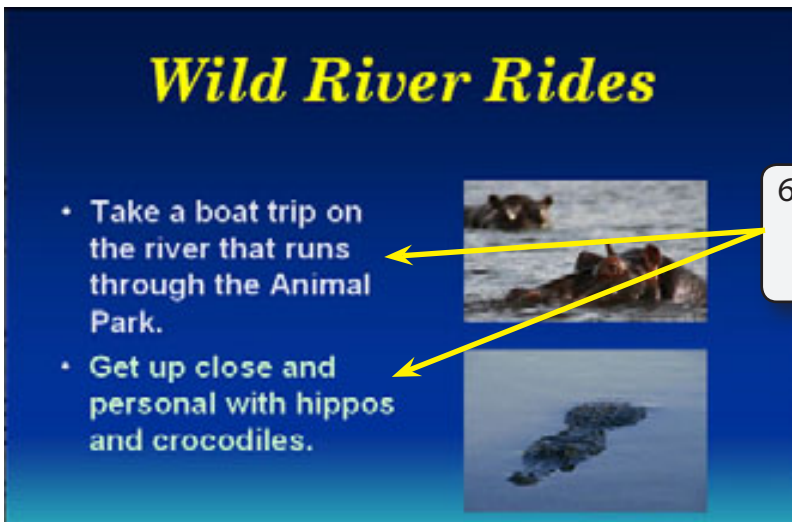
- Click on the SLIDE SHOW button at the bottom of the TASK PANE to run the slide show.



4 No text is displayed.



5 Click the mouse button and the first point is displayed.



6 Click the mouse button again. The first point is dimmed and the second point displayed.