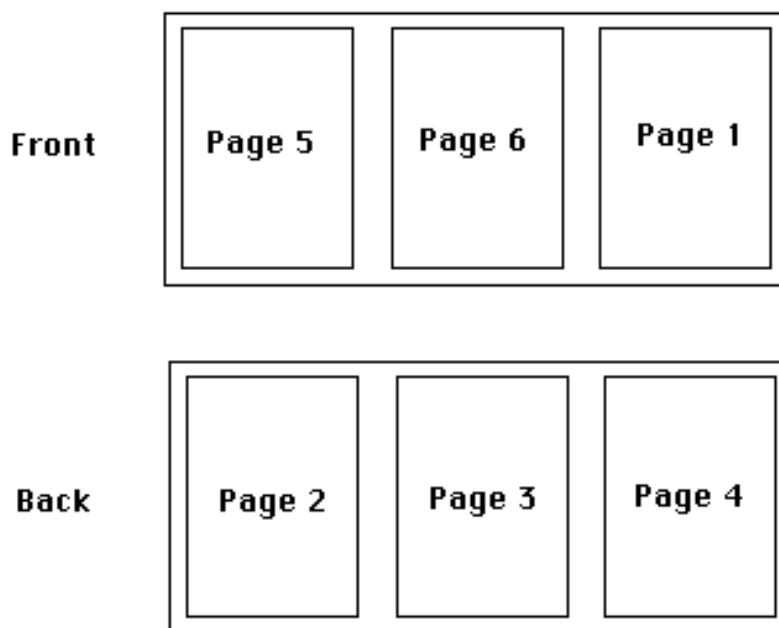
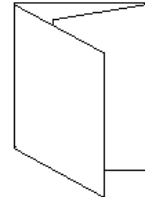


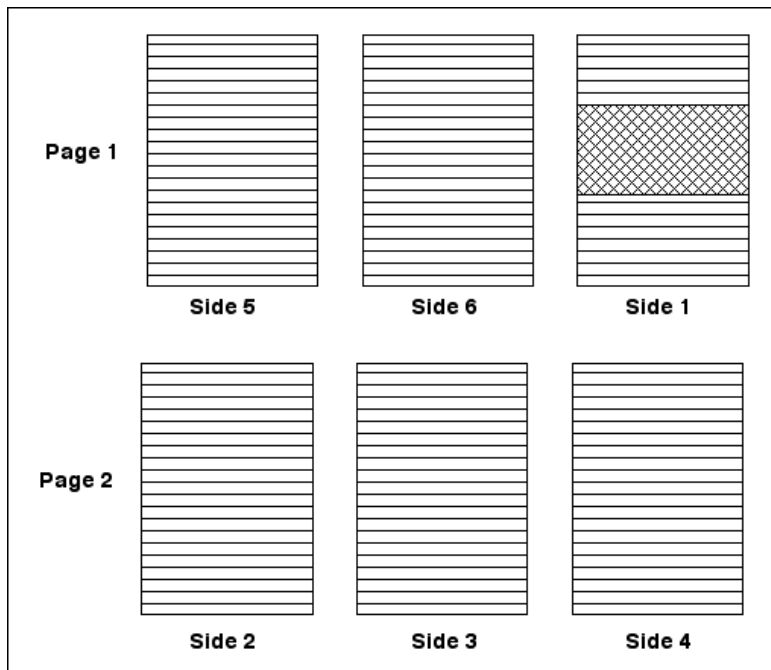
Creating Pamphlets

Pamphlets are an excellent way of displaying publicity information in a concise manner and they can be easily folded and posted. The most common form of pamphlet is one comprising 6 sides (or columns), 3 on each side of a sheet of paper. The sheet of paper is then folded in three. You can also create 4 sided pamphlets that are folded in half.

The most important step in the creation of this type of document is working out where each side should be placed so that the pamphlet folds correctly. Collect an A4 sheet of paper, turn it on its side (called landscape) and fold it into three even sections. Write the page number on each page so that page 1 is the first page and page 6 the last page. Open the sheet up and you should have:

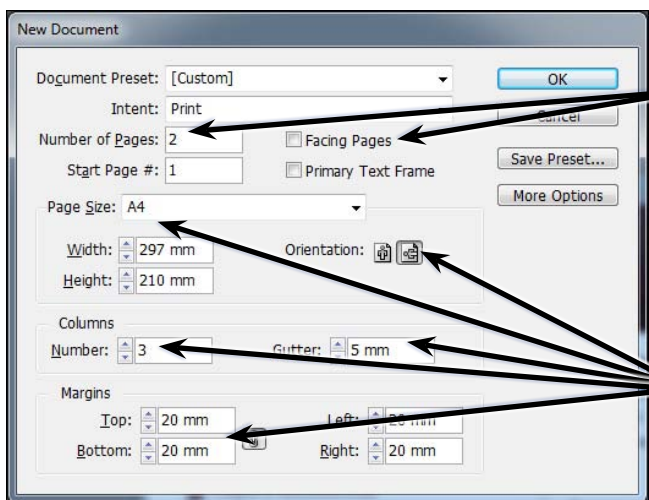


This is the layout that you will produce in this activity to create a pamphlet for an online music store. The thumbnail sketch for the pamphlet is displayed at the top of the next page.



The Page Layout

- 1 Load Adobe InDesign or close the current document.
- 2 Display the FILE menu and select NEW - DOCUMENT or click on DOCUMENT in the CREATE NEW section of the WELCOME SCREEN.



3 In the NEW DOCUMENT dialogue box turn off FACING PAGES and enter 2 in the NUMBER OF PAGES box.

4 Set the PAPER SIZE box to A4, the ORIENTATION to LANDSCAPE, the COLUMNS NUMBER to 3 with a 5 mm GUTTER and set the MARGINS to 20 mm.

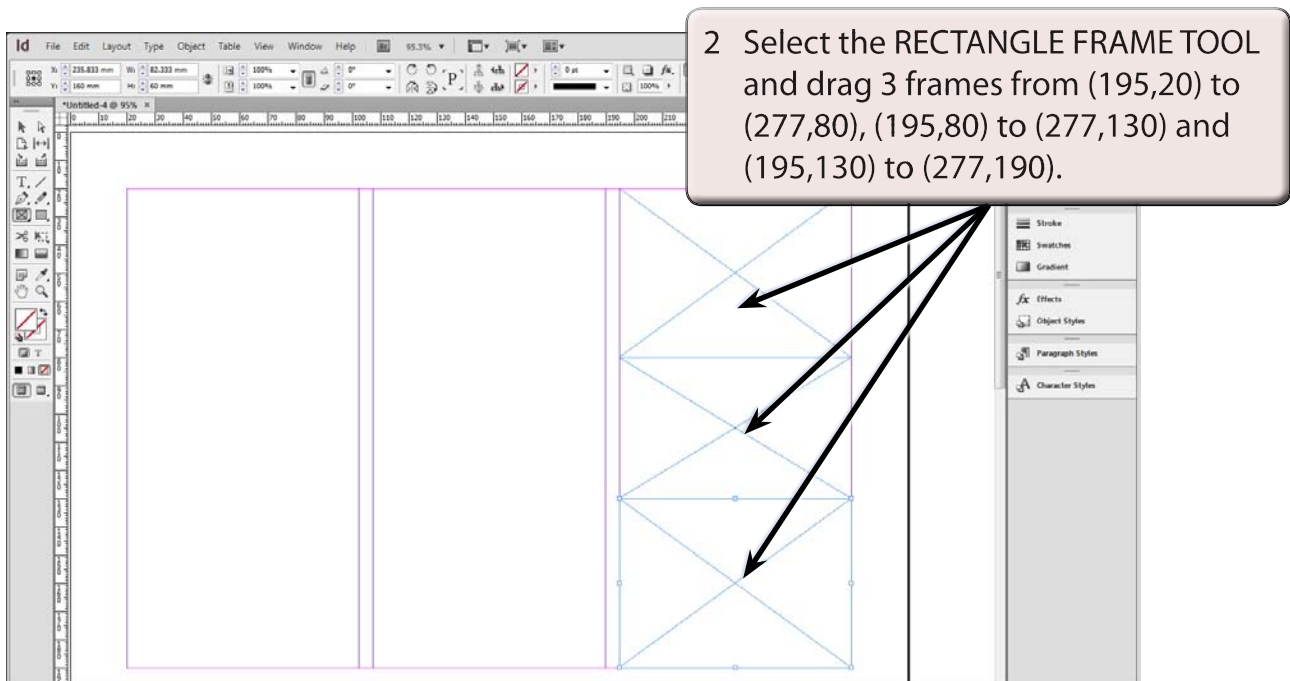
- 5 Select OK and the InDesign work page should be displayed. Check that the screen is set to the ADVANCED workspace.

Completing Side 1

Side 1 of the pamphlet will be the front page. It is placed in the right column of page 1 and it will contain two text frames and a graphic frame, all enclosed in a rectangle.

A Setting the Frames

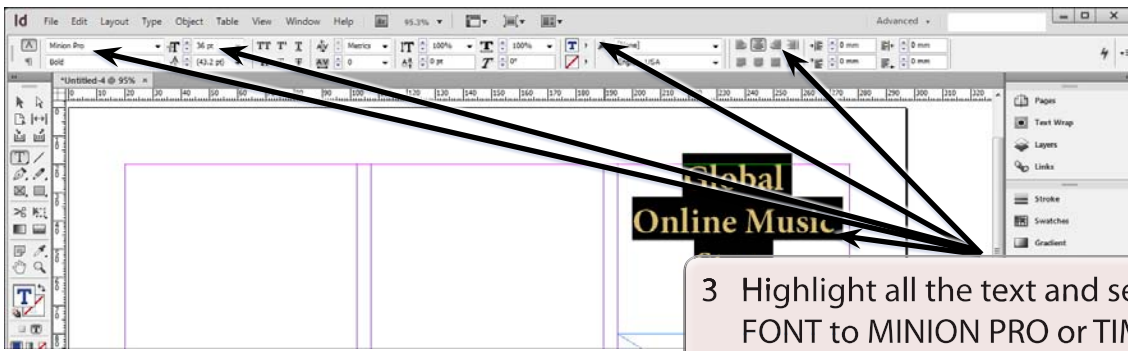
- 1 Page 1 should be on the screen. Set the view to FIT PAGE IN WINDOW.



B Completing the Top Frame

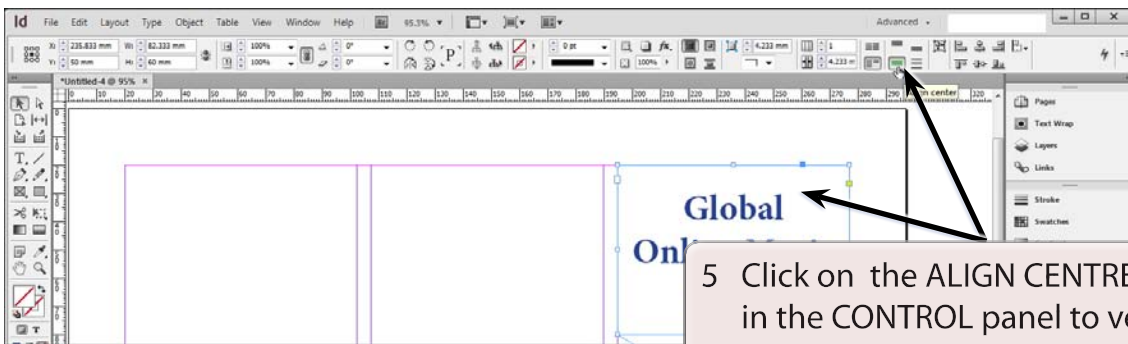
- 1 Select the TYPE TOOL and click the I-BEAM in the top frame.
- 2 Set the screen to ACTUAL SIZE and enter the following text:

Global	<enter>
Online Music	<enter>
Store	



3 Highlight all the text and set the FONT to MINION PRO or TIMES (NEW ROMAN), the STYLE to BOLD, the SIZE to 36 point, the ALIGNMENT to CENTRE and the FONT COLOUR to DARK BLUE.

4 The text can be vertically centred in the frame and given a light drop shadow. Select the SELECTION TOOL and the frame should be selected.



5 Click on the ALIGN CENTRE button in the CONTROL panel to vertically centre the text in the frame.

NOTE: You can also display the OBJECT menu, select TEXT FRAME OPTIONS, set the VERTICAL JUSTIFICATION - ALIGN box to CENTRE and select OK to vertically centre the text in the frame.



6 Click on the EFFECTS icon in the CONTROL panel and select DROP SHADOW.