

# Creating Multimedia PDF Products

You can create documents that play movie clips using InDesign. It is best to export these documents as PDF files as SWF files cannot be set to play movie clips. You can export an InDesign file as a Flash file and import the movie clips within Adobe Flash if you want to create SWF files.

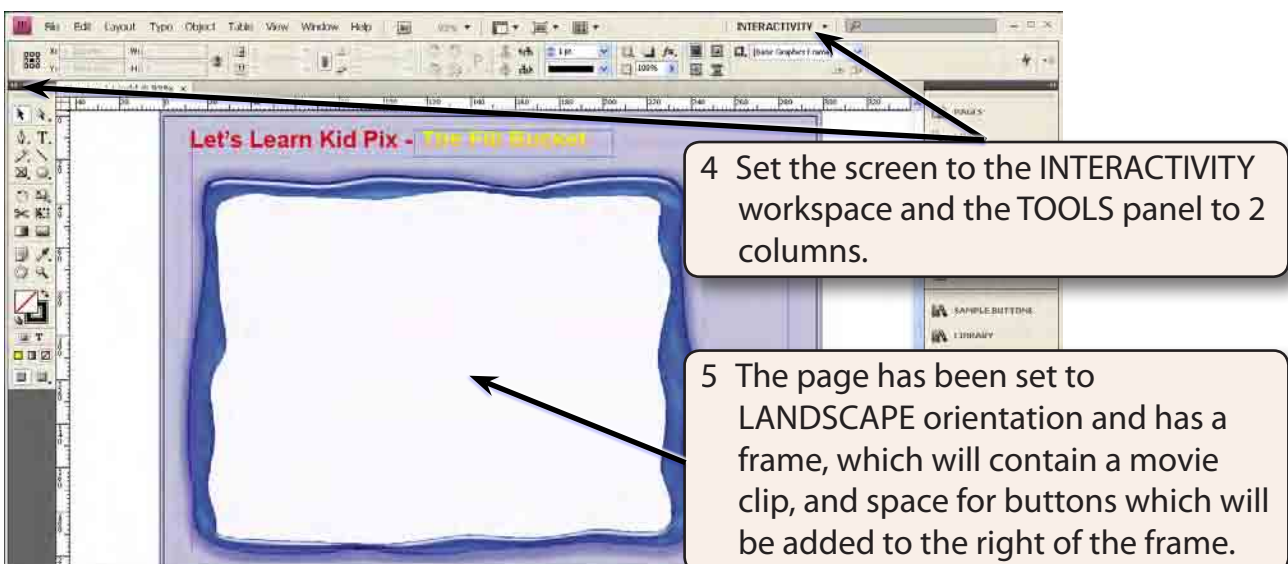
In this chapter you will create a multimedia PDF file for a primary school. It will demonstrate to primary school students how to use features of the Kid Pix program which is used in many primary schools.

**NOTE:** Your computer system will need to be capable of importing and playing QuickTime movie clips for the activities in this chapter to be completed.

## Loading the Prepared File

The screen design has been prepared for you.

- 1 Load Adobe InDesign or close the current document.
- 2 Display the FILE menu and select OPEN or click on OPEN in the OPEN A RECENT ITEM section of the START SCREEN.
- 3 Access the IDcs4 SUPPORT FILES, open the CHAPTER 14 folder and load the CHAPTER 14 file.





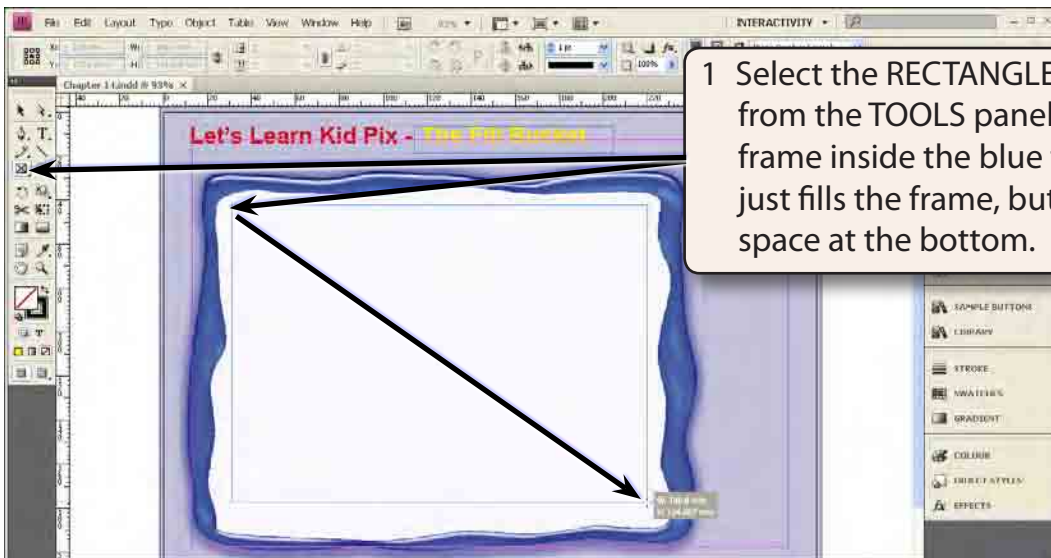
6 Use the SELECTION TOOL to click on parts of the screen. You will notice that the yellow text frame is the only part of the screen that you can select.

**NOTE**

- i All of the other elements have been placed in a MASTER PAGE so that they do not interfere with the production of the page.
- ii The blue frame was created in Adobe Photoshop and placed over a light blue rectangle.

## Inserting a Movie Clip

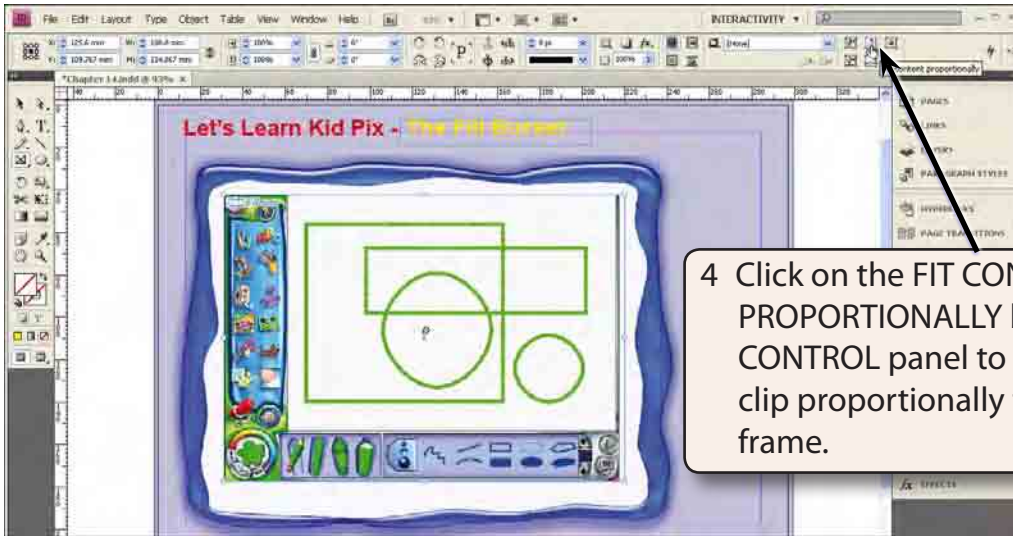
A movie clip will be placed in a frame inserted inside the blue frame.



1 Select the RECTANGLE FRAME TOOL from the TOOLS panel and drag a frame inside the blue frame so that it just fills the frame, but leaving a little space at the bottom.

**NOTE:** The space at the bottom of the frame is for the QuickTime movie controller bar to be displayed. This bar allows the movie to be paused and replayed.

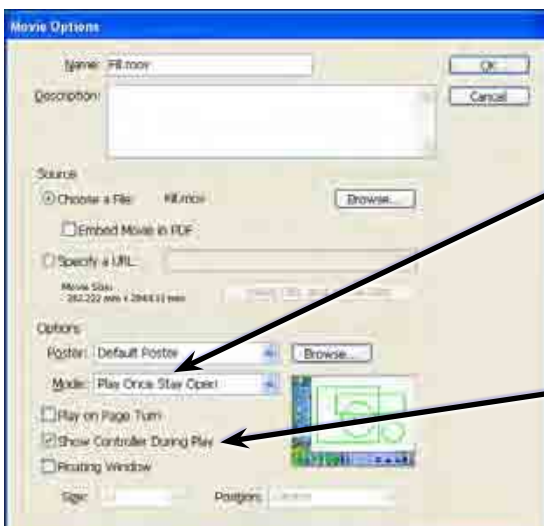
- 2 Display the FILE menu and select PLACE (or press CTRL+D or COMMAND+D).
- 3 Access the IDcs4 SUPPORT FILES, open the CHAPTER 14 folder and load the FILL movie clip.



## The Movie Clip Settings

When you place a movie clip in a frame the default setting is for the movie clip to only play once. This can be changed and the CONTROLLER BAR can also be turned on.

- 1 With the movie clip frame selected display the OBJECT menu, highlight INTERACTIVE and select MOVIE OPTIONS.



**NOTE:** The **CONTROLLER** is the QuickTime movie bar that is placed at the base of the movie. It provides a bar that shows the progress of the movie clip and allows you to pause, restart and replay the movie clip.

- 4 Use SAVE AS from the FILE menu to save the document in your STORAGE folder as:  
Chapter 14 Kid Pix CD

**NOTE:** The movie clip is not saved in your document. Just a link to the movie clip's location on your network or hard disk is recorded.

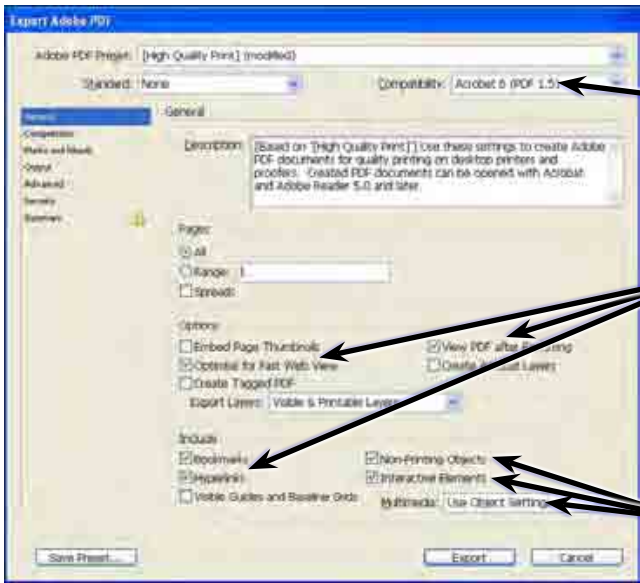
## Looking at the Movie Clip

Unfortunately you cannot test the playing of the movie clip from within InDesign. The interactive products produced by InDesign are designed to be exported to PDF files for use in Adobe Acrobat Reader. To test the operation of the movie clip the document will need to be exported to a PDF file.

- 1 Display the FILE menu and select EXPORT.



- 4 Click on SAVE and the EXPORT PDF options dialogue box will be displayed.



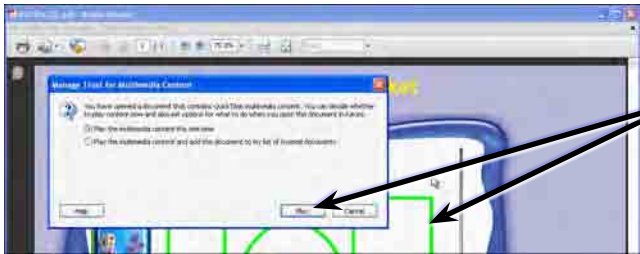
5 Set the COMPATIBILITY to ACROBAT 6 (PDF 1.5) or later.

6 Turn on OPTIMISE FOR FAST WEB VIEW and VIEW PDF AFTER EXPORTING, BOOKMARKS and HYPERLINKS.

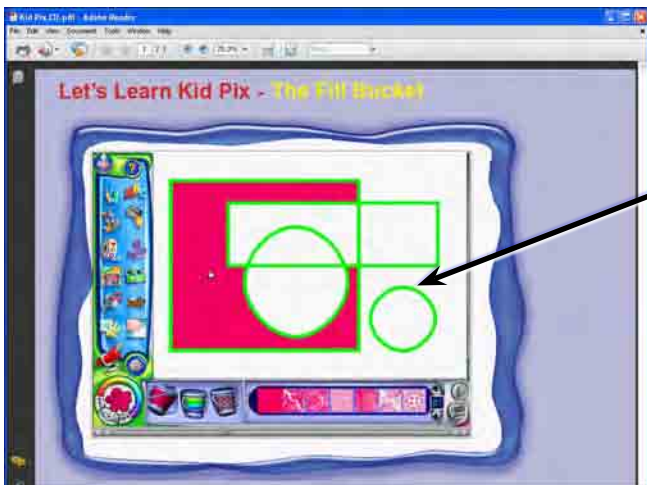
7 Turn on NON-PRINTING OBJECTS, INTERACTIVE ELEMENTS and set the MULTIMEDIA box to USE OBJECT SETTINGS.

8 Click on EXPORT and the PDF file will be generated.

9 When the PDF file opens press CTRL+0 or COMMAND+0 to set the screen to FIT PAGE. If Acrobat Reader is not launched, load it and open the file.



10 Click on the movie clip and, if a warning message is displayed, click on PLAY.



11 The movie clip should play within the frame.