

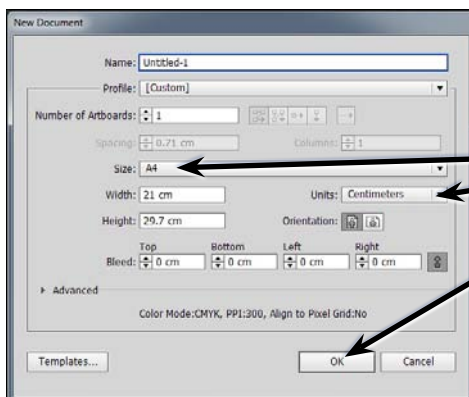
Image Tracing

One of Adobe Illustrator's most powerful tools is the IMAGE TRACE tool. It allows you to draw a rough sketch on paper (or find a sketch), scan it, import the scan into Illustrator and convert it to a vector image using the IMAGE TRACE tool. The image then acts like it was created in Illustrator.

IMAGE TRACE can also be used to convert photos to artwork. This can be useful if you have a poor quality photo that you want to use in a document and displaying it as artwork can hide the deficiencies in the photo. Setting a photo to a vector image can also reduce the file size of the photo.

Starting a New Document

- 1 Load Adobe Illustrator CS6 or close the current document.
- 2 Display the FILE menu and select NEW to start a new document.



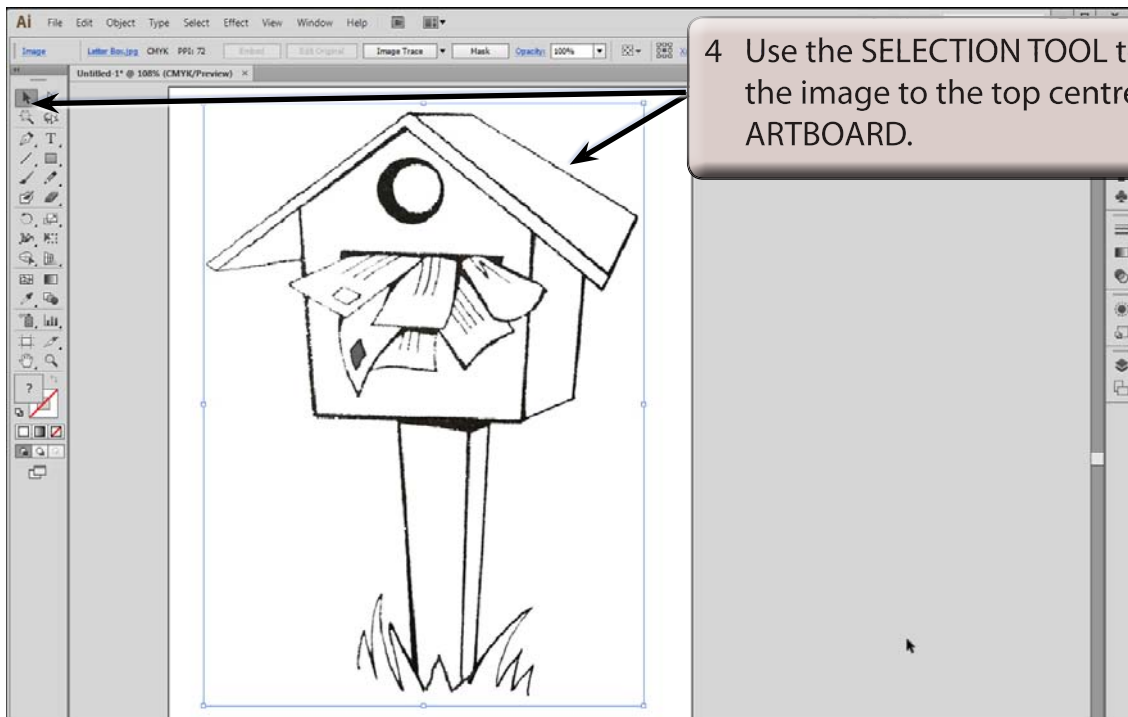
- 3 Set the SIZE to A4 (or the paper size your printer uses), the UNITS to CENTIMETRES and select OK.

Tracing a Scanned Sketch

A scan of a letter box overflowing with letters has been prepared for you. It needs to be traced and converted into artwork.

A Importing the Scan

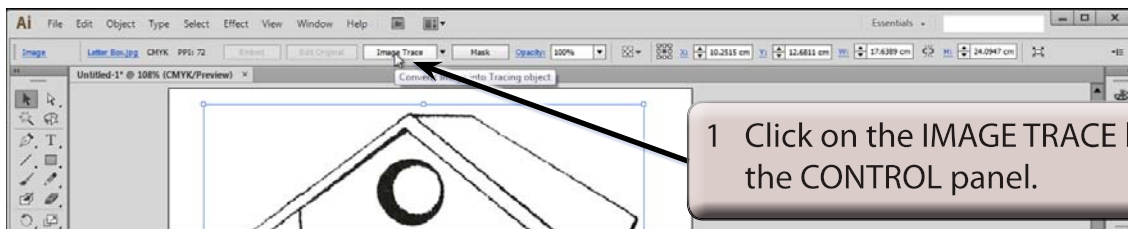
- 1 Display the FILE menu and select PLACE.
- 2 Access the ILLUSTRATOR CS6 SUPPORT FILES folder and open the CHAPTER 9 folder.
- 3 Select the LETTER BOX file, check that the LINK box is deselected and select PLACE.



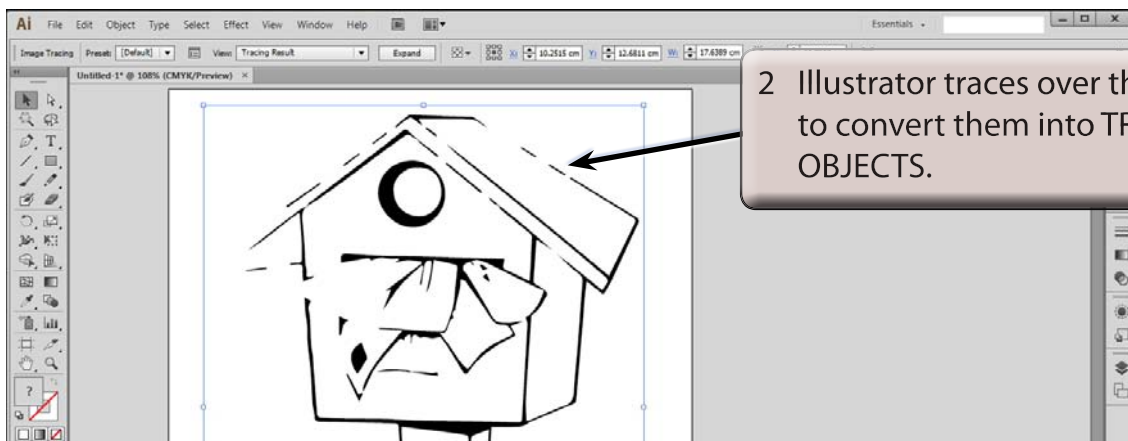
4 Use the SELECTION TOOL to move the image to the top centre of the ARTBOARD.

NOTE: The image has been increased in size so that you will be able to see its sections more clearly. It will be reduced in size once its sections have been coloured in.

B Tracing the Scan

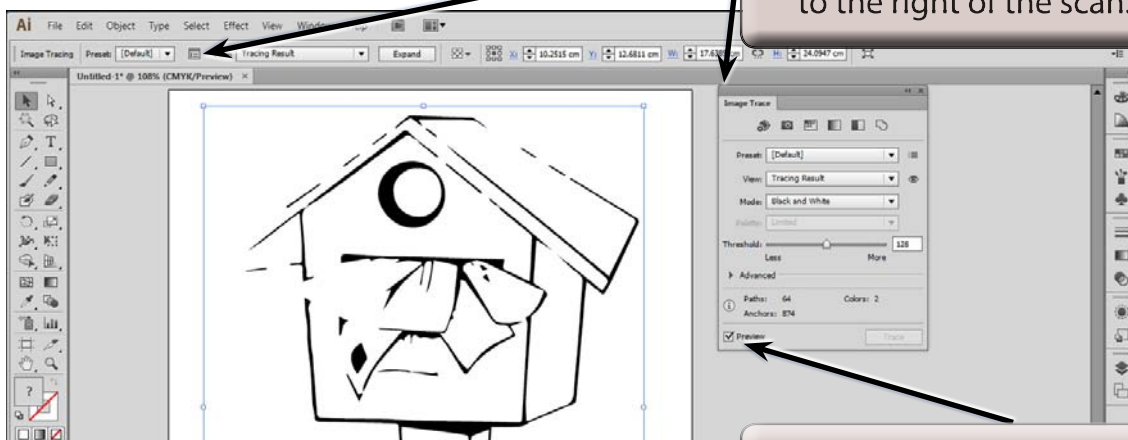


1 Click on the IMAGE TRACE button in the CONTROL panel.



2 Illustrator traces over the lines to convert them into TRACING OBJECTS.

3 The trace needs some help.



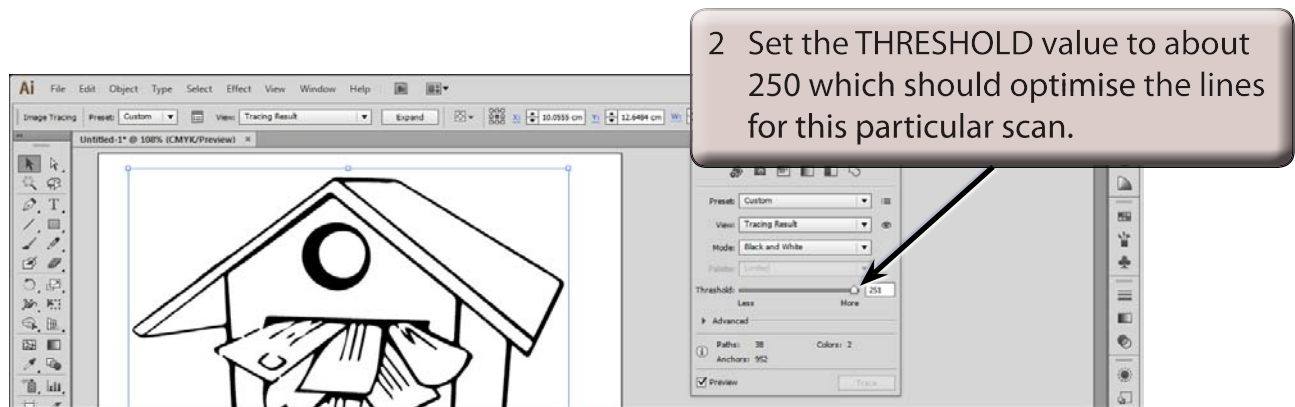
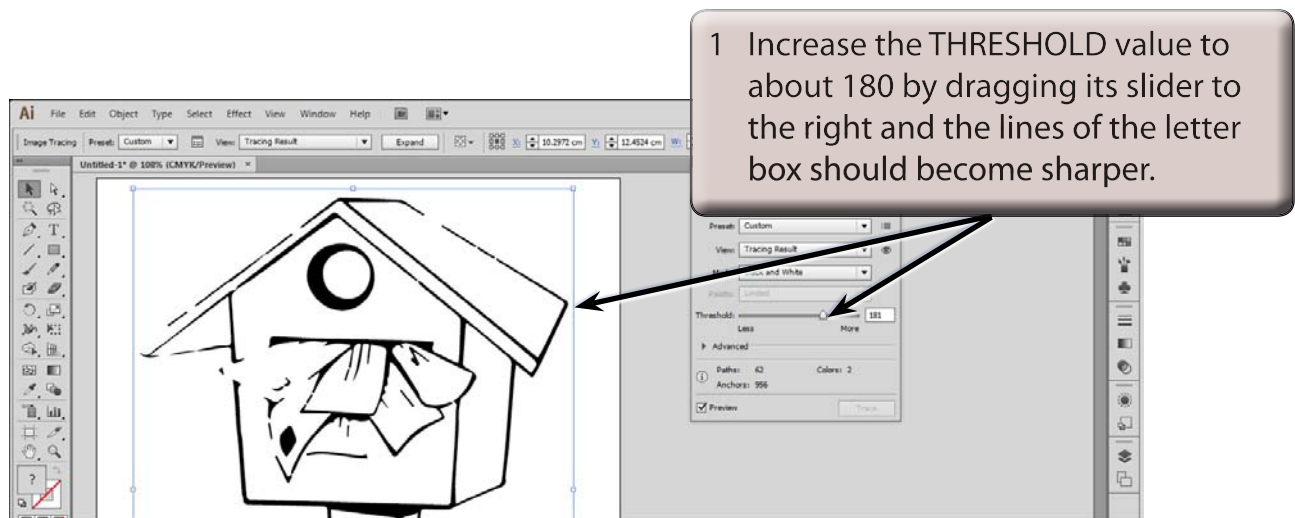
4 Click on the IMAGE TRACE PANEL icon in the CONTROL panel and move the IMAGE TRACE PANEL to the right of the scan.

5 Check that the PREVIEW box is turned on so that you can view the adjustments.

- NOTE:**
- i There are tracing presets in the CONTROL panel that can be applied to TRACING OBJECTS and these will be looked at a little later once you are familiar with the adjustment process.
 - ii The default image trace setting is BLACK AND WHITE which is suitable for this sketch.

C Adjusting the Threshold

There are numerous options that can be adjusted in the IMAGE TRACE panel, but the main one for a scanned sketch is the THRESHOLD.



NOTE: The THRESHOLD controls how much black and white is displayed in the image.