

# Using Masks

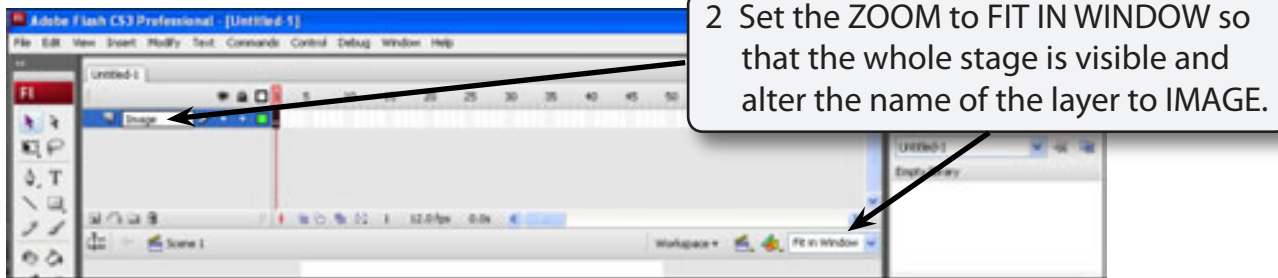
Some interesting and effective animations can be created using a layer to cover (or mask) part of another layer. The portion of layer being covered can only be seen through whatever shape is drawn in the mask layer. The process is called MASKING.

## Creating a Mask over a Background

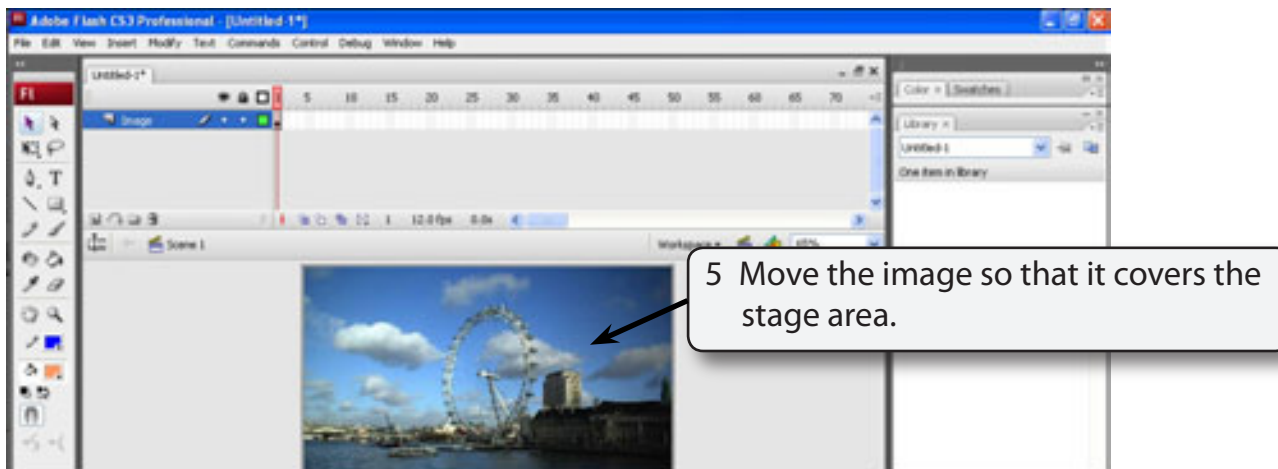
For this first example a mask will be used to display only part of a picture of London.

### A Creating the Background Layer

- 1 Load Flash and create a new Flash File, or close the current file and create a new Flash File.

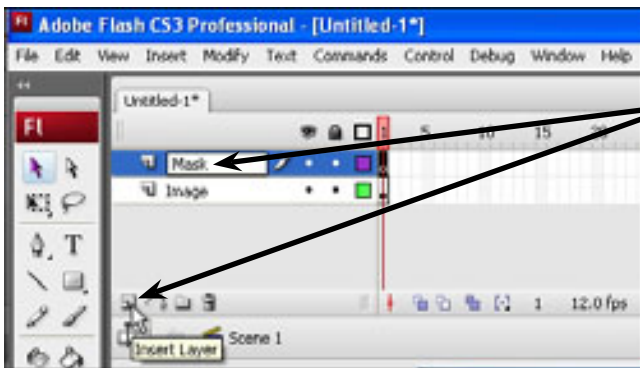


- 3 Display the FILE menu, highlight IMPORT and select IMPORT TO STAGE.
- 4 Access the FLASHcs3 SUPPORT FILES, open the CHAPTER 14 folder and import the LONDON image.

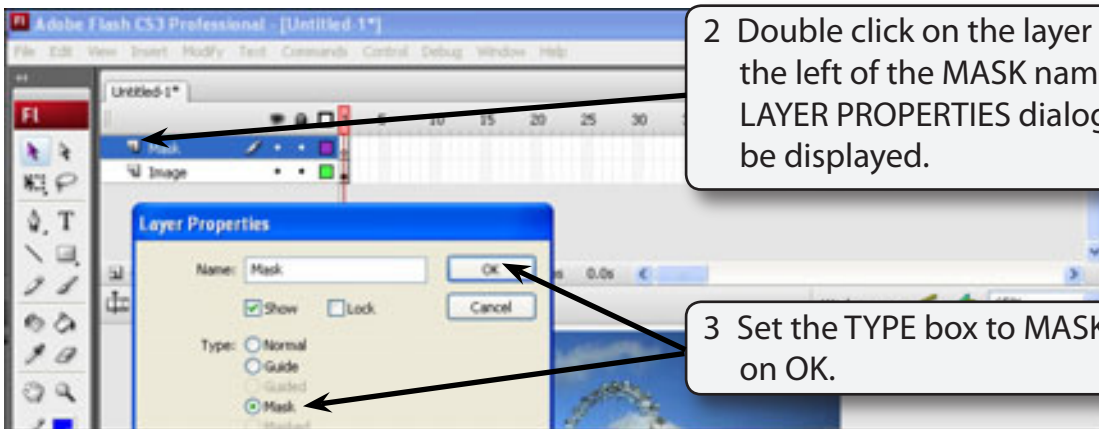


## B Inserting the Mask Layer

In order for a mask to operate a layer must be converted to a MASK layer.



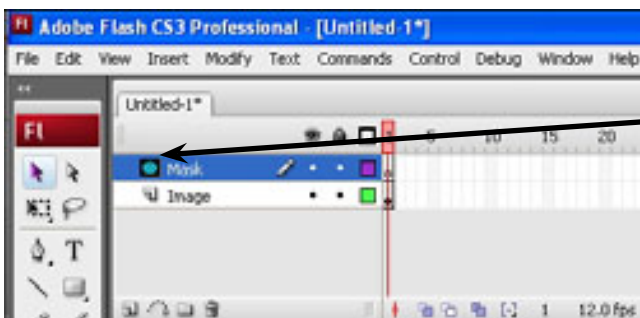
1 Insert a new layer in the TIMELINE panel and call it MASK.



2 Double click on the layer icon to the left of the MASK name and the LAYER PROPERTIES dialogue box will be displayed.

3 Set the TYPE box to MASK and click on OK.

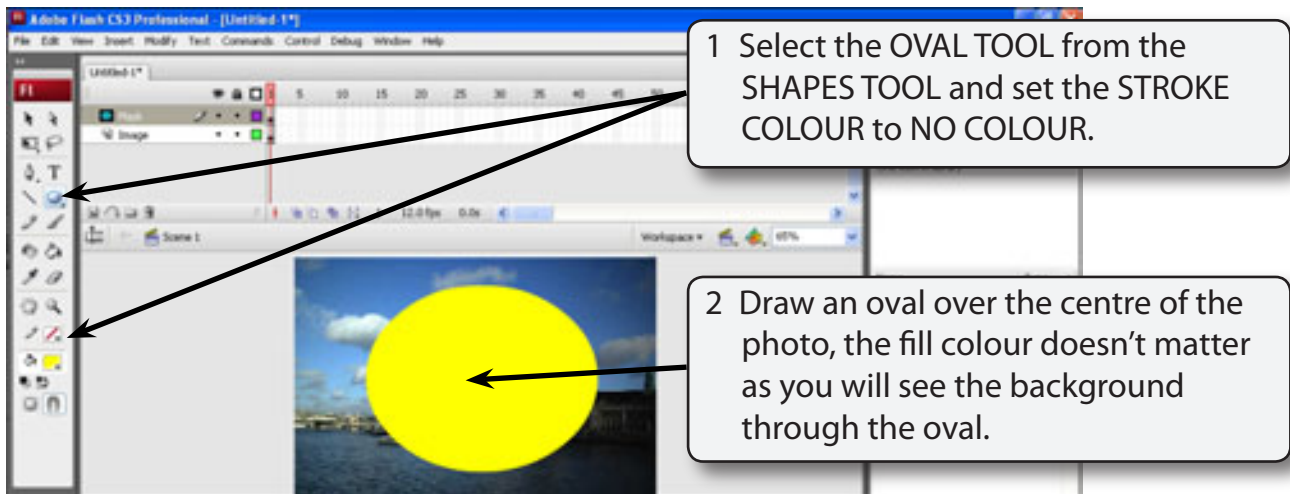
**NOTE:** You can also RIGHT+CLICK or CONTROL+CLICK on the layer name and select MASK from the SHORTCUTS menu.



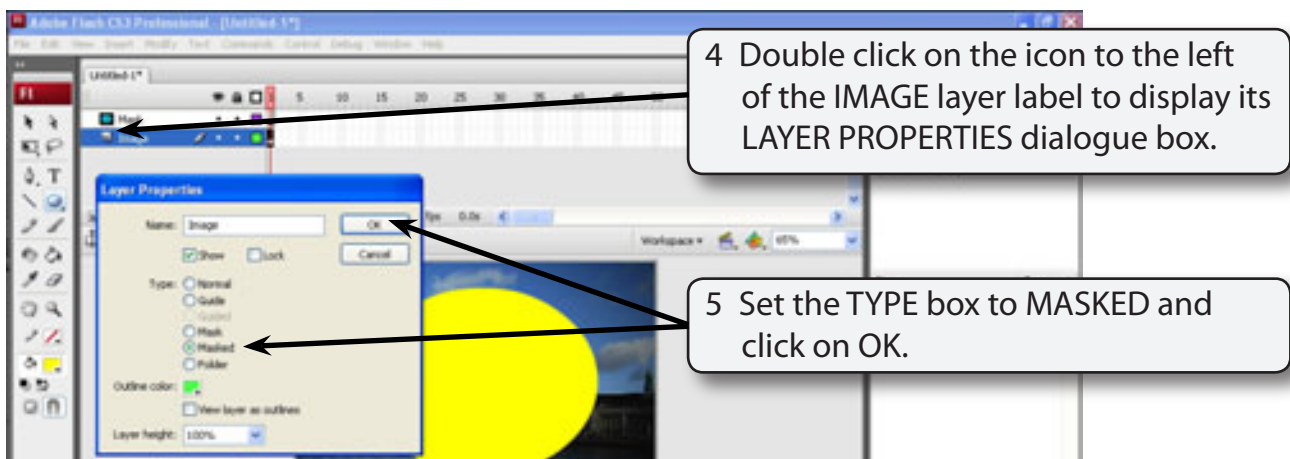
4 The MASK layer has a different icon.

## C Creating the Mask

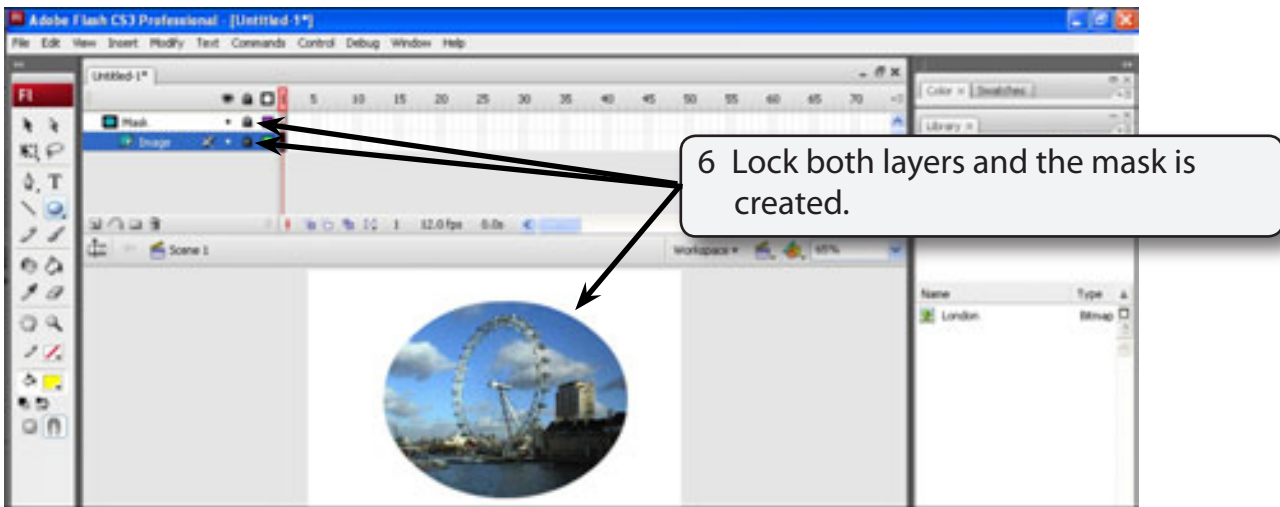
A shape now needs to be drawn in the MASK layer. The background will only be seen through this shape. You can use the shape tools such as the OVAL and RECTANGLE TOOLS to be the mask shape, or use the BRUSH TOOL to draw a more complicated shape.



- 3 The program needs to be told which layer is to be masked. In this case it is the IMAGE layer.

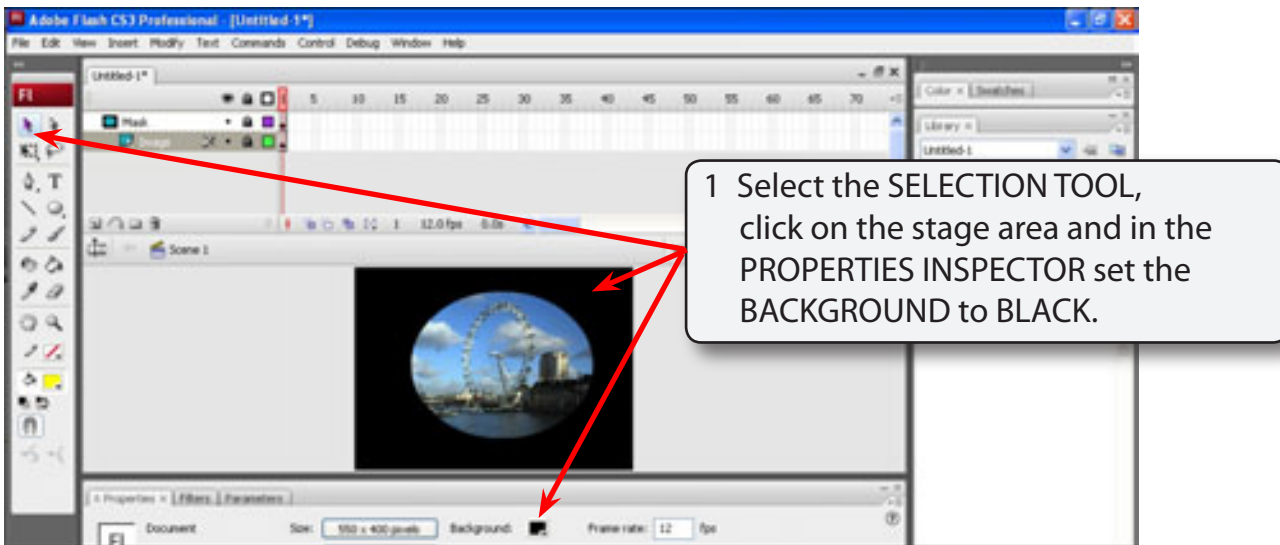


- NOTE:**
- i The IMAGE layer is indented under the MASK layer to indicated that it is masked by the MASK layer.
  - ii You can drag a layer to the lower edge of a MASK layer to quickly set it to a MASKED layer.



## D Background Colours

Some interesting effects can be created by changing the background colour.



- 2 Set the ZOOM to 100% to see the effect more clearly.
- 3 Try some other background colours.

## E Editing the Mask

If you need to edit a mask you simply unlock the layers, make the change then re-lock the layers. Let's say we want to change the part of the background that is seen. You can either move the background or the oval.

