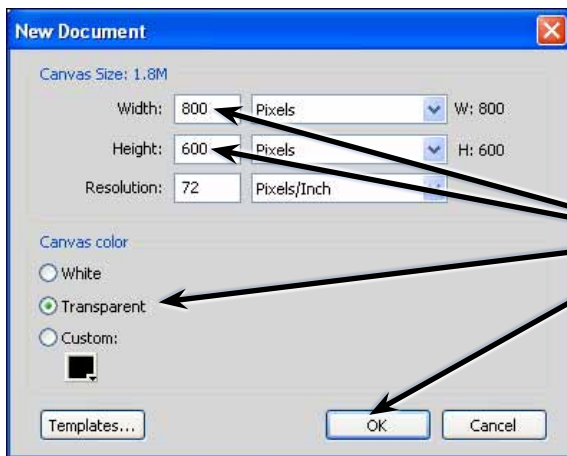


Creating Animations

FireWorks allows you to create simple animations for inclusion on web sites. These can be created as a symbol or as a normal document. For more detailed animations, an animation program such as Adobe Flash needs to be used.

Starting a New Document

- 1 Load Adobe FireWorks or close the current document.
- 2 In the CREATE NEW section of the WELCOME screen click on FIREWORKS DOCUMENT to start a new document.



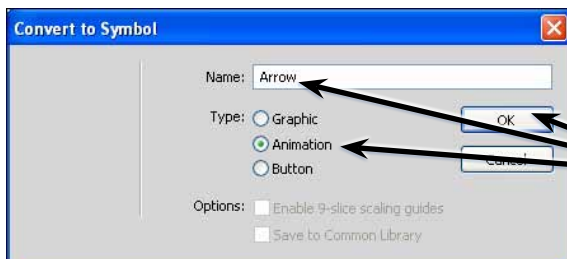
3 Set the WIDTH to 800 pixels, the HEIGHT to 600 pixels, the CANVAS COLOUR to TRANSPARENT and select OK.

Creating an Animated GIF Symbol

Let's create an animated symbol that could be used to highlight points in a web site.

A Starting the Symbol

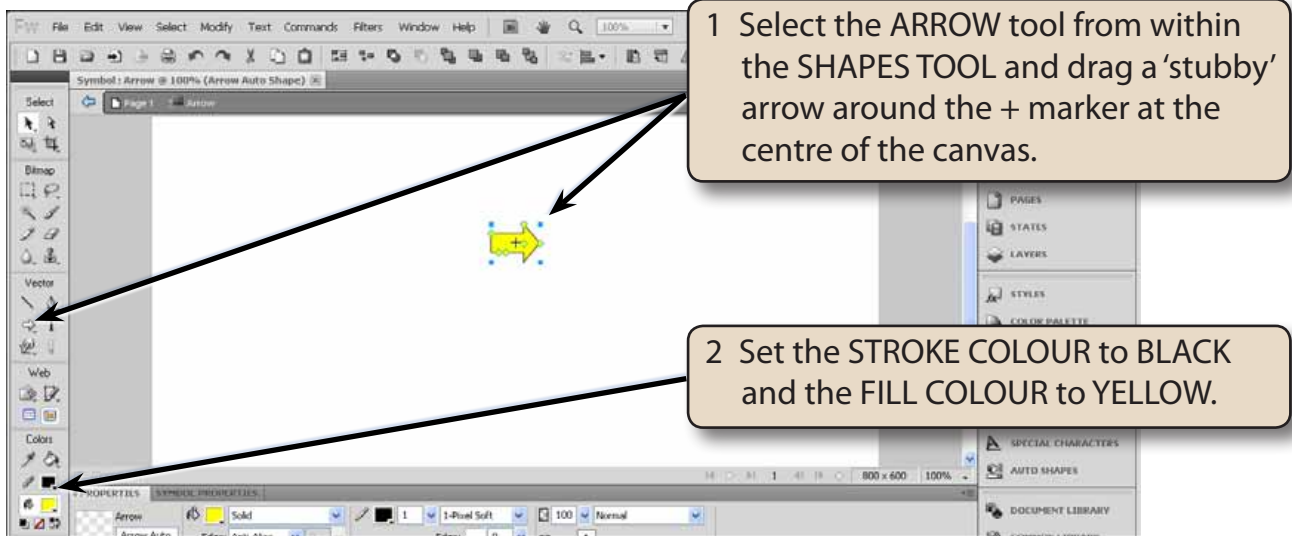
- 1 Display the EDIT menu, highlight INSERT and select NEW SYMBOL.



2 Call the symbol ARROW, set its TYPE to ANIMATION and select OK.

B Drawing the Shape

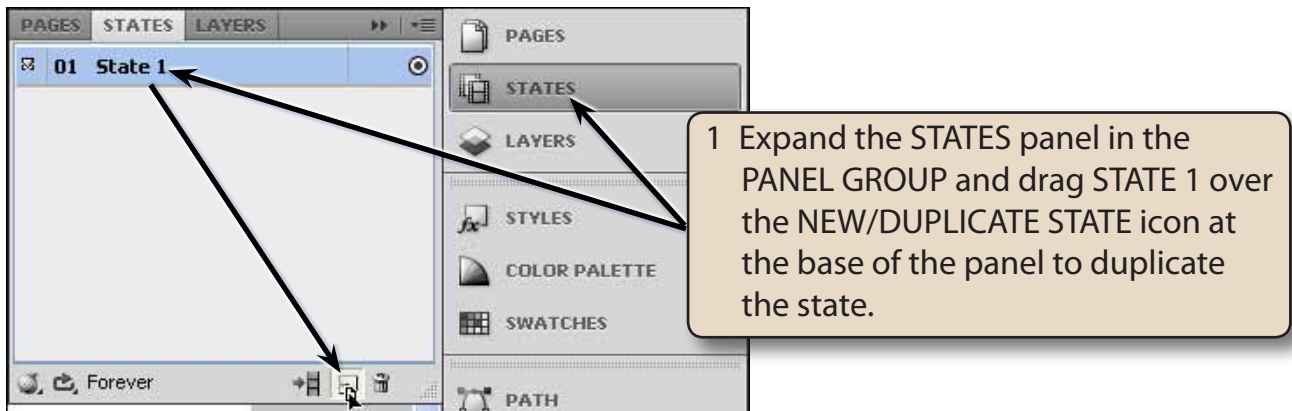
An arrow will be used to create the point highlight and this arrow will be set to change in size and colour.



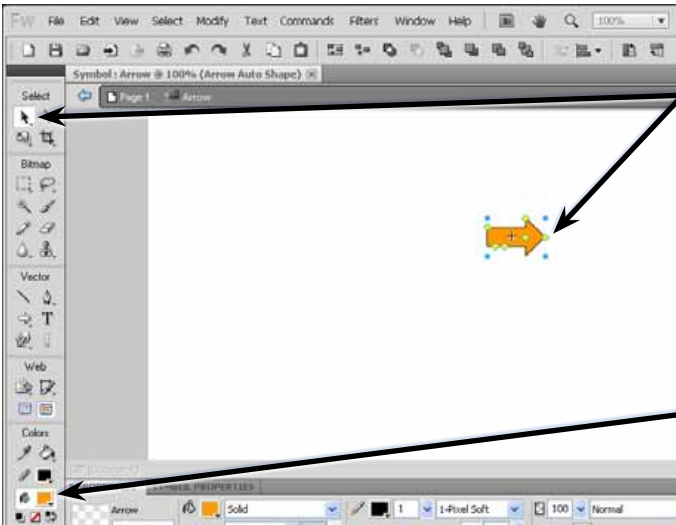
NOTE: You could apply bevel and drop shadow filters on the arrow if you wish to.

C Creating the States

Animations are created by changing an object in different STATES. You can think of the states as the FRAMES of the animation.

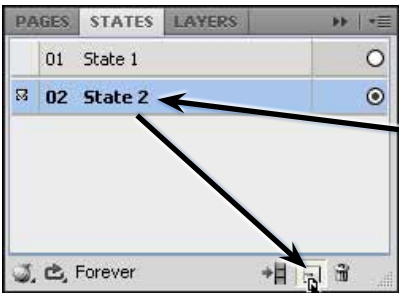


NOTE: You can also RIGHT+CLICK on STATE 1 and select DUPLICATE STATE to duplicate the state if you prefer.

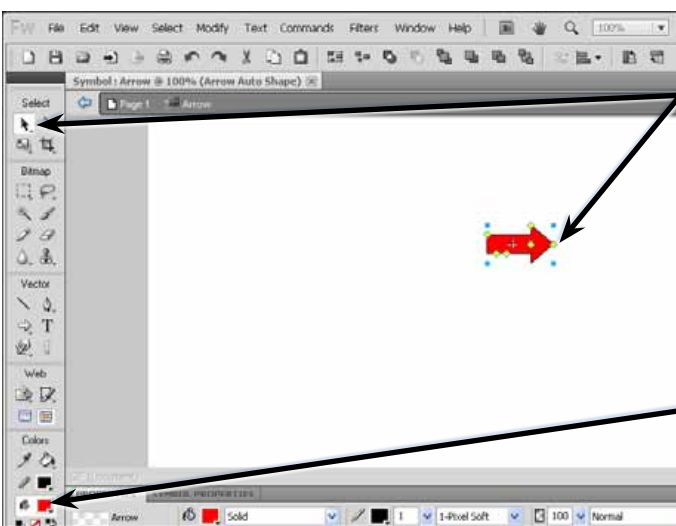


2 Click on the arrow, select the SCALE TOOL and drag the centre right handle to the right a little to increase the size of the arrow.

3 Set the FILL COLOUR of the arrow to ORANGE.



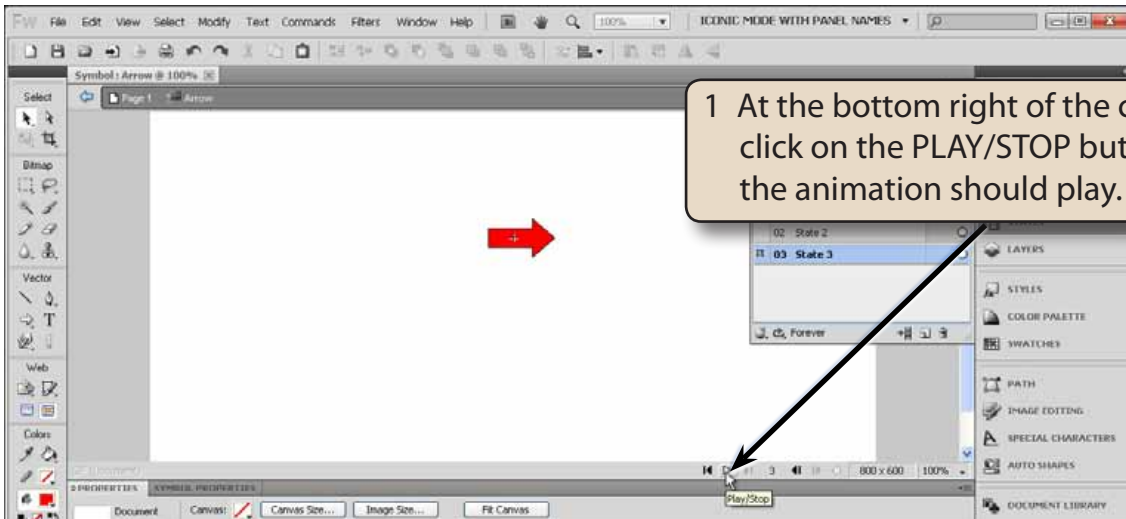
4 Duplicate STATE 2 by dragging it over the NEW/DUPLICATE STATE icon at the base of the STATES panel.



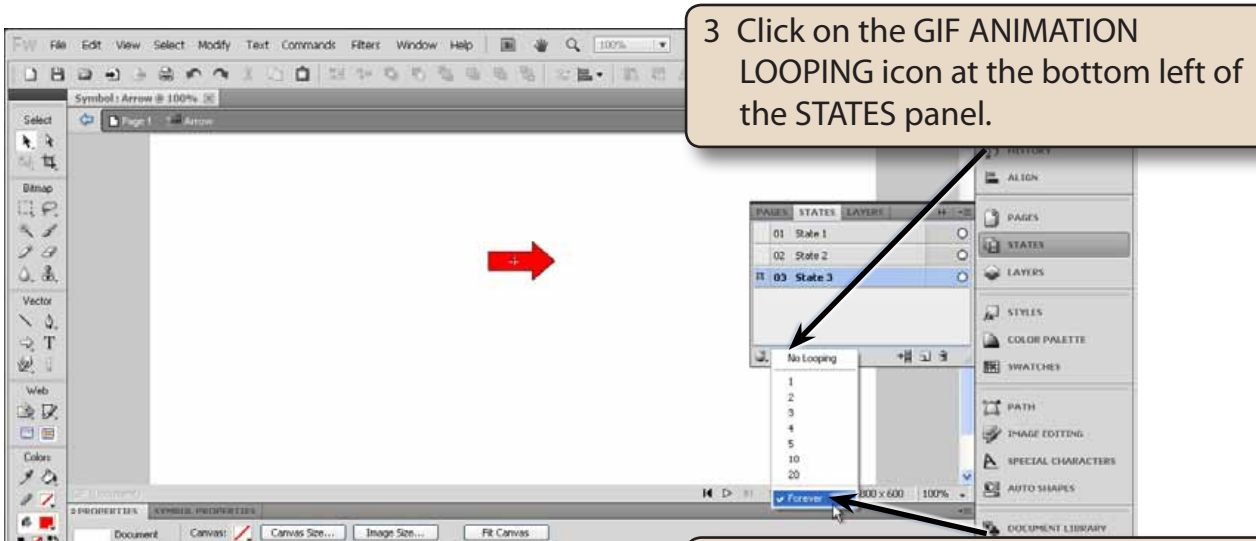
5 Click on the arrow, select the SCALE TOOL and drag the centre right handle to the right a little more to increase the size of the arrow.

6 Set the FILL COLOUR of the arrow to RED.

D Looking at the Animation



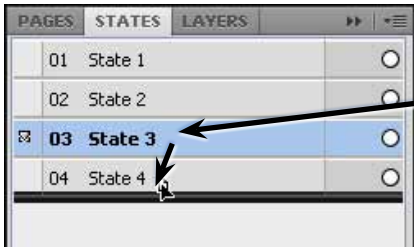
2 Click on the PLAY/STOP button again to stop the animation.



4 This allows you to control how many times the animation plays. Leave FOREVER selected.



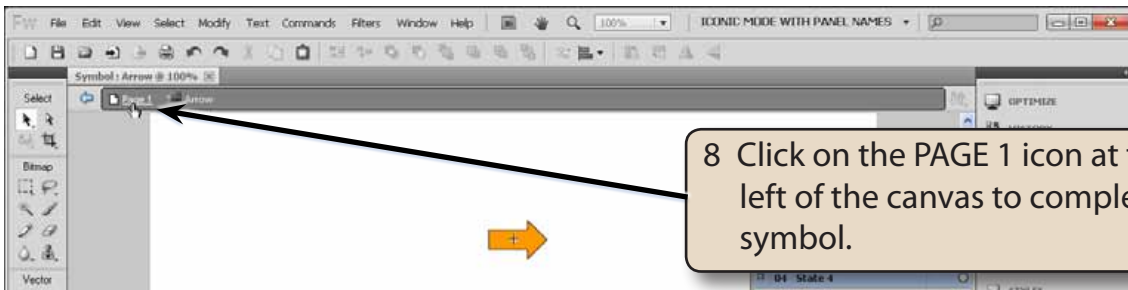
5 Duplicate STATE 2 by dragging it over the NEW/DUPLICATE STATE icon at the base of the STATES panel.



6 Drag the new STATE 3 to the base of STATE 4.

7 Play the animation to see the effect of duplicating the orange arrow has then STOP the animation.

NOTE: By duplicating the ORANGE arrow state and moving it after the RED arrow state, the arrow changes from yellow to orange to red then back to orange before the animation starts again from yellow.



8 Click on the PAGE 1 icon at the top left of the canvas to complete the symbol.