

Introduction to FireWorks

Adobe FireWorks CS5 is a graphics program that incorporates the two modes of image manipulation:

- Vector mode where you can draw and edit paths or objects
- Bitmap mode where you can draw and edit screen pixels

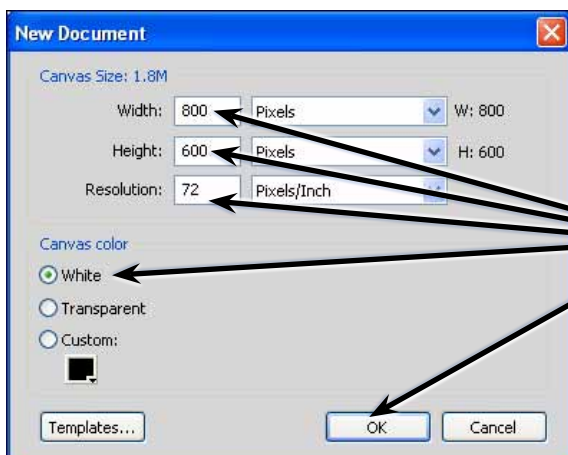
It is important that you understand the difference between the two modes and when to use them, and this chapter will demonstrate the difference between the two modes.

Starting the Document

- 1 Load Adobe FireWorks CS5 and the FIREWORKS WELCOME screen should be displayed.

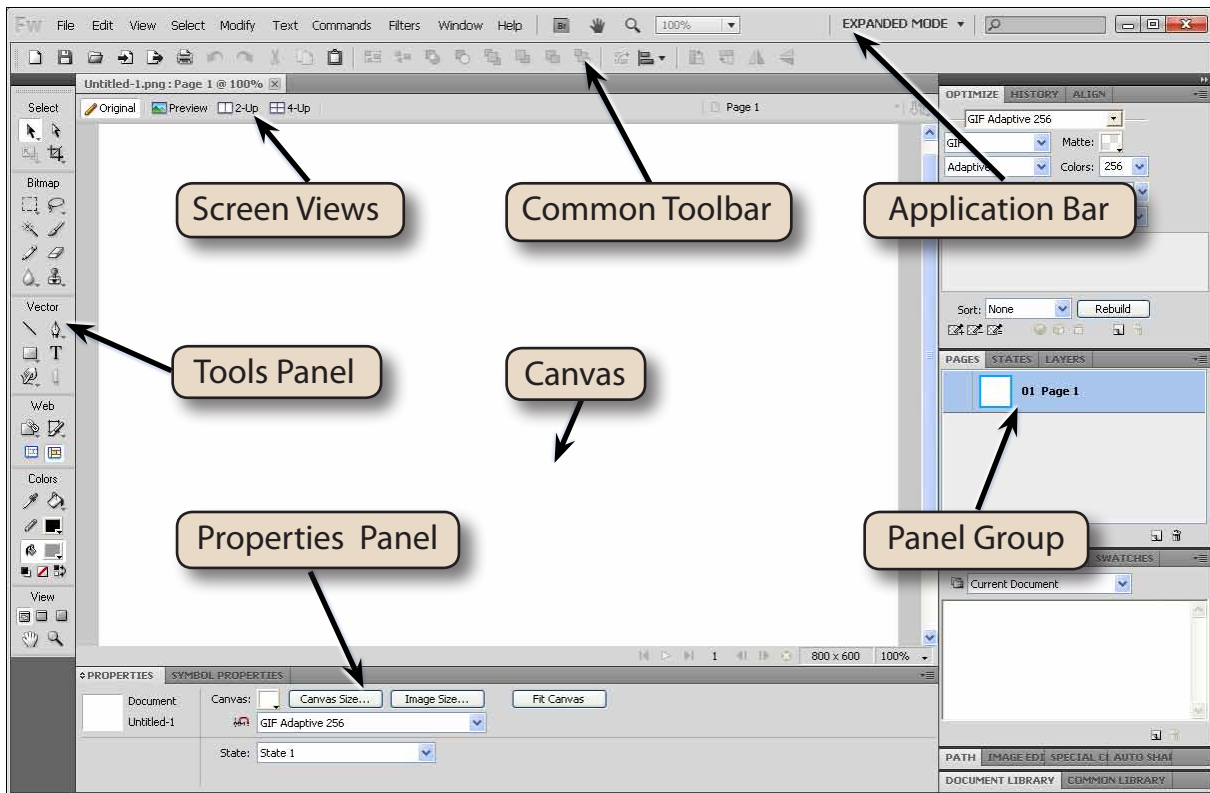


2 In the CREATE NEW section click on FIREWORKS DOCUMENT.

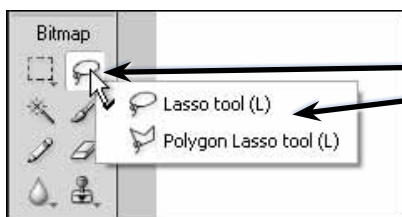


3 The document properties need to be set. Set the WIDTH to 800 pixels, the HEIGHT to 600 pixels, leave the RESOLUTION at 72 pixels/inch, set the CANVAS COLOUR to WHITE and select OK.

- 4 The FireWorks screen is opened and labelled at the top of the next page. Refer to its labelled sections until you are fully familiar with them.



5 In the TOOLS panel, tools that have a small arrow at their bottom right corner have extra tools within them.



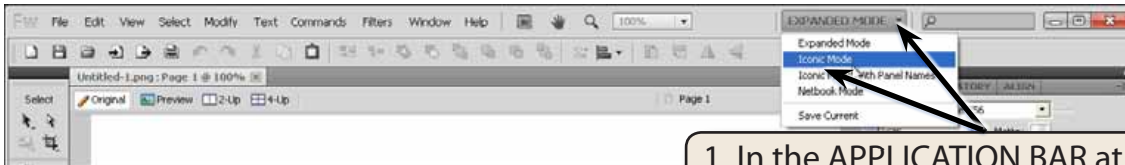
6 Click and hold on the LASSO TOOL and the POLYGON LASSO TOOL will also be displayed.

7 Look at some of the other tools that have arrows at their base.

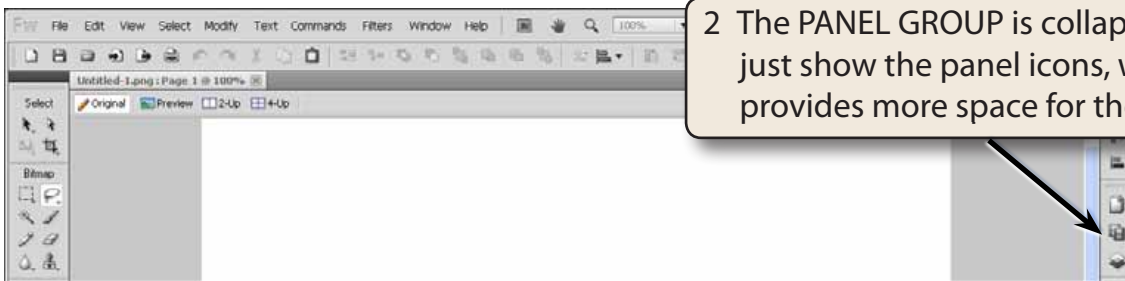
NOTE: Each time you select a new tool in the TOOLS panel the PROPERTIES panel at the bottom of the screen changes to display the properties specific to the selected tool.

Screen Modes

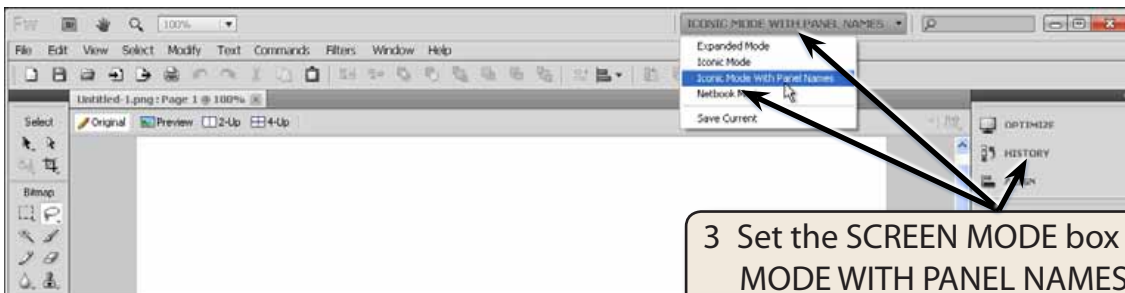
FireWorks provides different screen modes that alter the screen appearance.



1 In the APPLICATION BAR at the top of the screen, click on the SCREEN MODE box and set it to ICONIC MODE.



2 The PANEL GROUP is collapsed to just show the panel icons, which provides more space for the canvas.



3 Set the SCREEN MODE box to ICONIC MODE WITH PANEL NAMES so that labels are included within the collapsed panels.

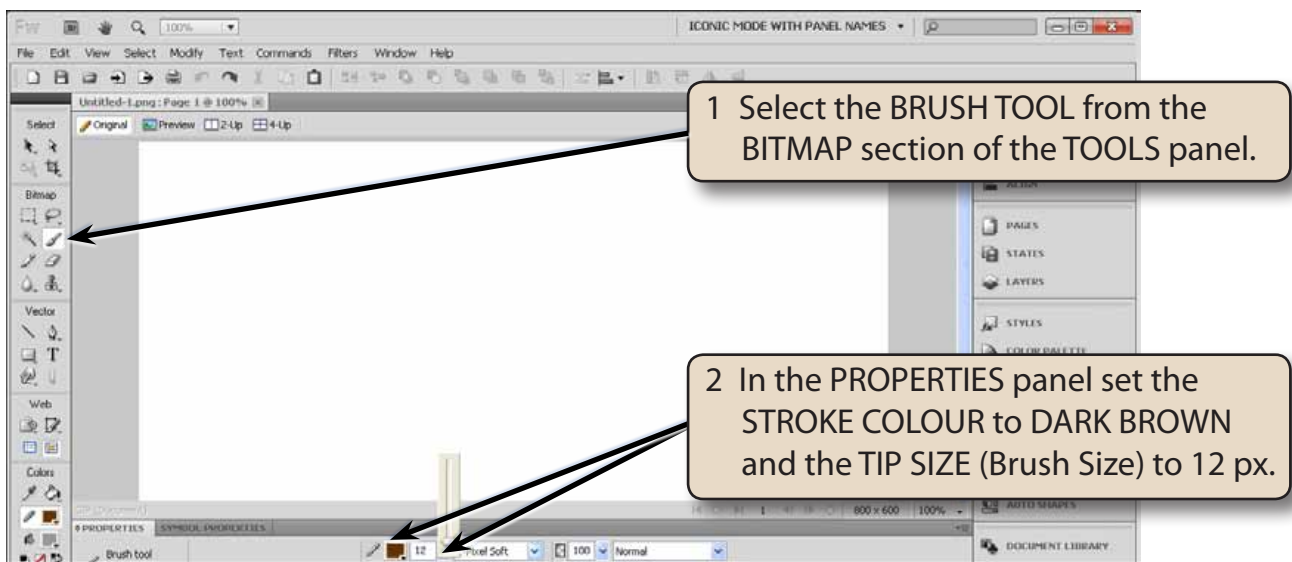
- NOTE:**
- i If you make changes to the screen layout such as adding or removing panels from the PANEL GROUP, you can always return the screen back to one of the default modes by selecting the screen mode from the APPLICATION BAR.
 - ii Collapsing panels provides more screen space for the canvas.
 - iii If you are using a laptop computer, you might prefer to set your screen to the NETBOOK MODE workspace.

Bitmap and Vector Tools

It is important that you understand the difference between the Bitmap and Vector tools that FireWorks provides.

A Bitmap Tools

Bitmap tools turn on screen lights (called pixels) allowing for freehand painting and for sketches to be easily painted over. The downside is that pixel-based documents are usually larger in file size.



NOTE: You can press <enter> or <return> to set the TIP SIZE or simply click on the canvas.

