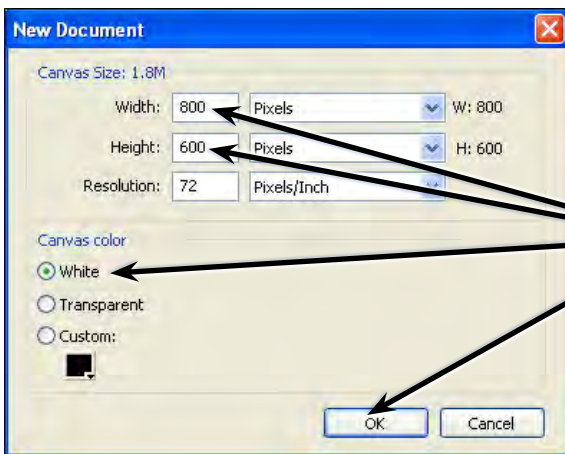


Using Text

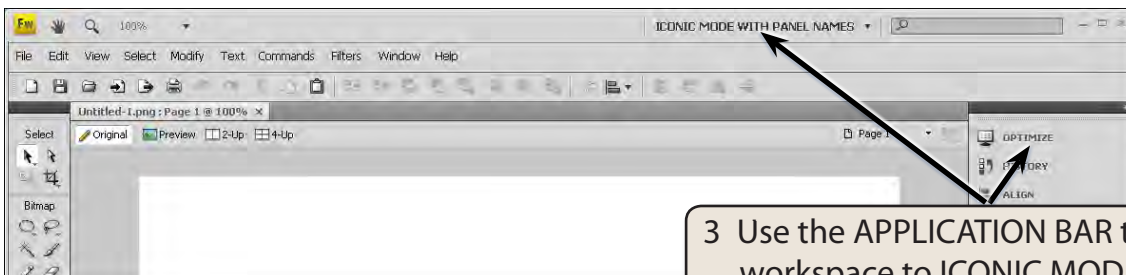
Text can be included in FireWorks documents. This text can be formatted, have effects applied to it and set to flow along a path.

Starting the Document

- 1 Load Adobe FireWorks CS4 or close the current documents then select FIREWORKS DOCUMENT from the CREATE NEW section of the FIREWORKS WELCOME SCREEN.



- 2 Set the WIDTH to 800 pixels, the HEIGHT to 600 pixels, the CANVAS COLOUR to WHITE and select OK.

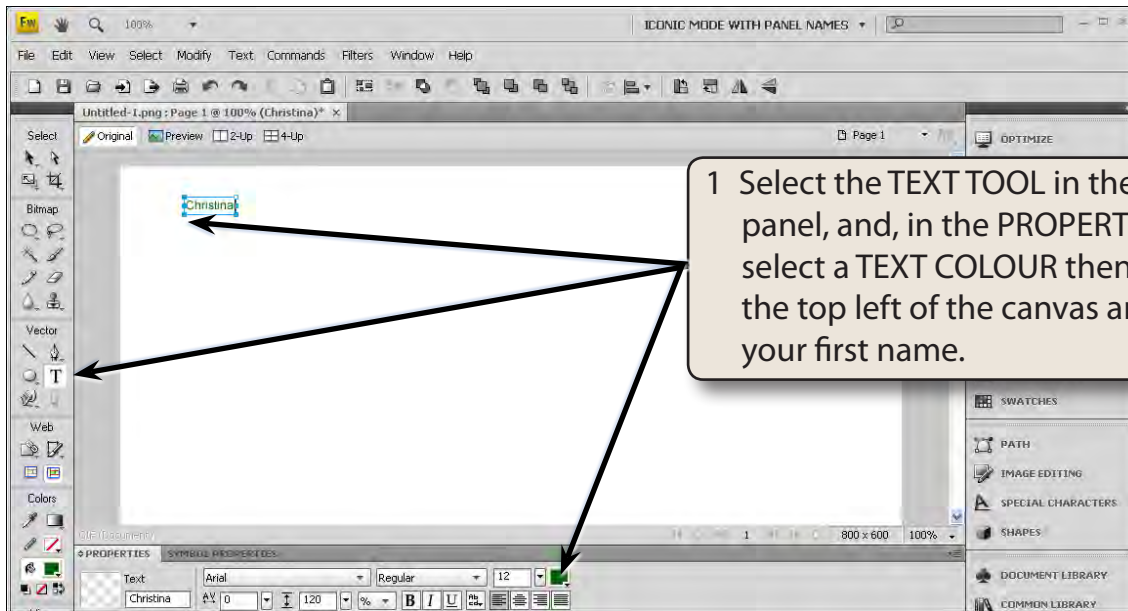


- 3 Use the APPLICATION BAR to set the workspace to ICONIC MODE WITH PANEL NAMES so that the panel names are displayed in the PANEL GROUP.

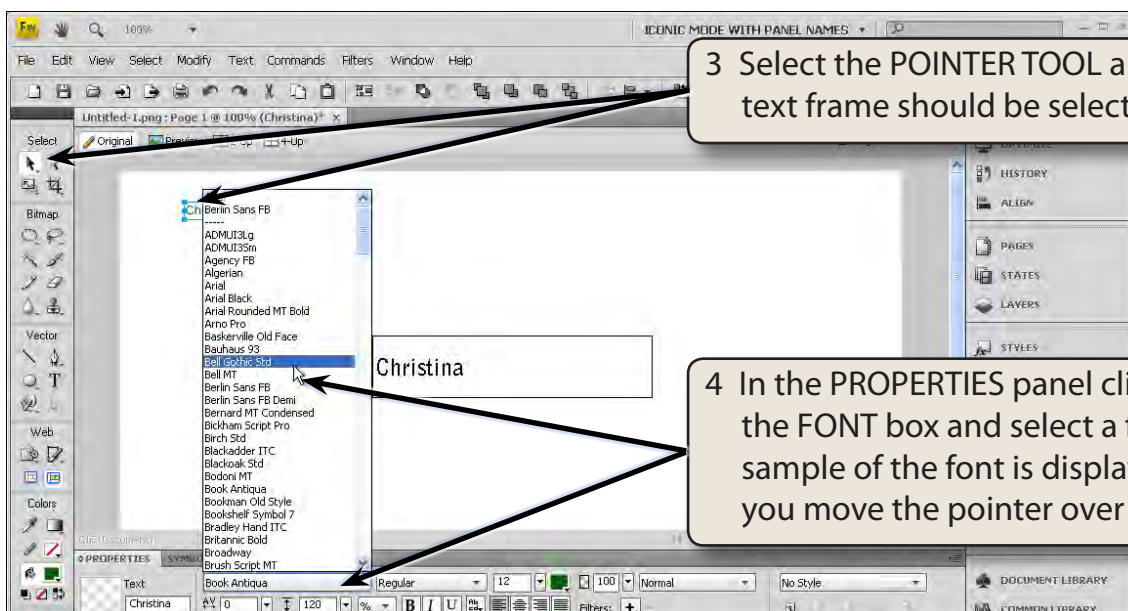
Entering Text

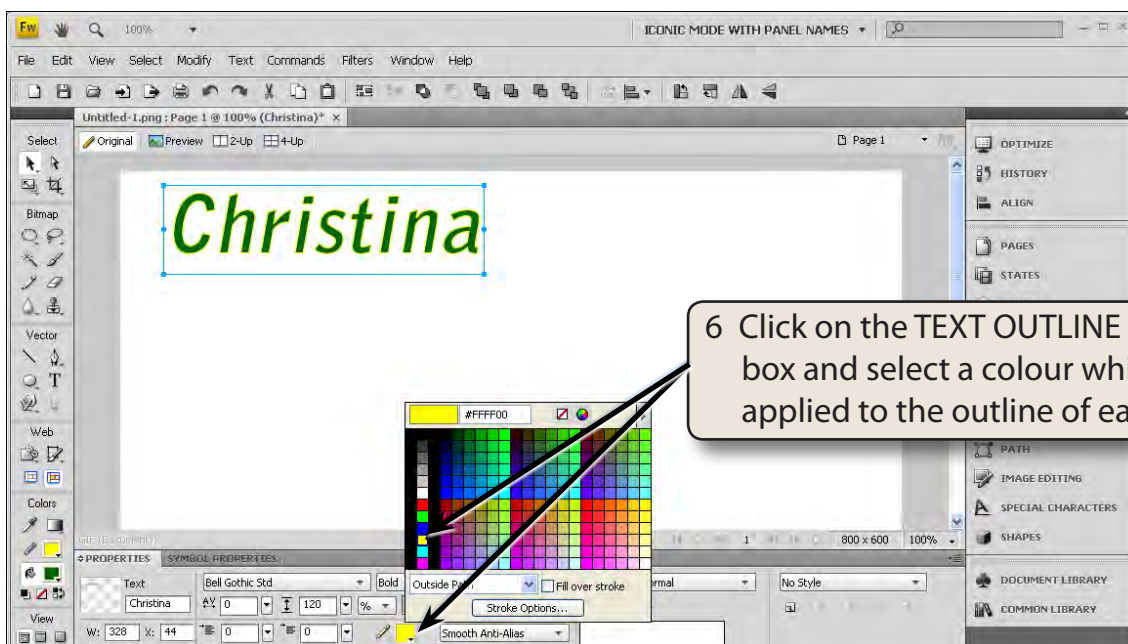
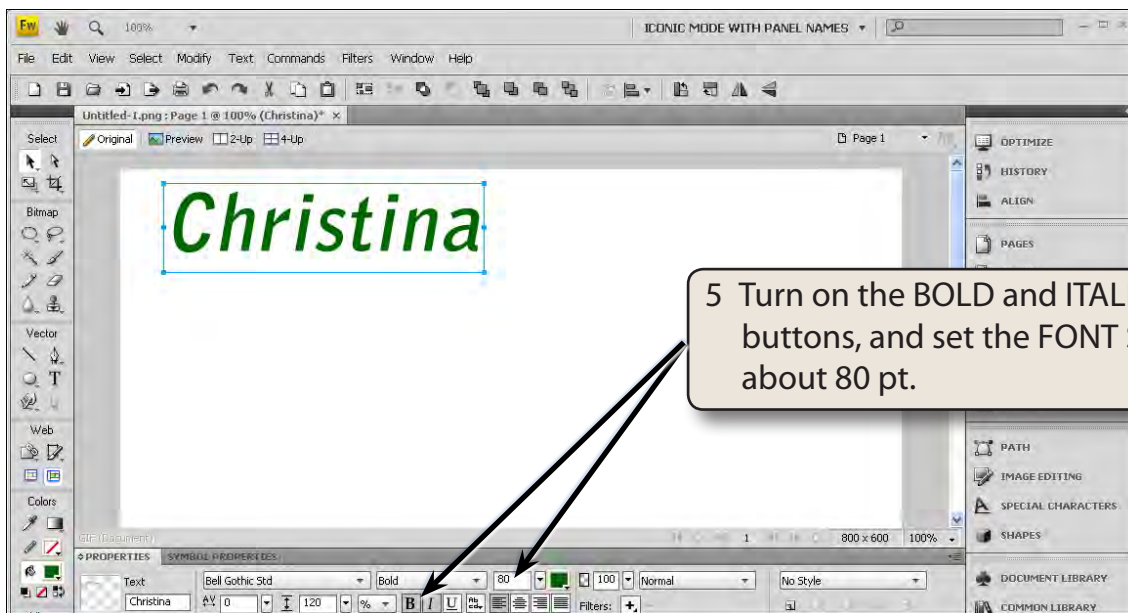
There are two types of text in FireWorks. POINT TEXT where you click on the canvas and type, and AREA TEXT where you define the width of the text frame.

A Point Text



2 The PROPERTIES panel contains most of the standard formatting tools for the text.





NOTE: Fonts usually have set styles built into them. These styles can be applied from the FONT STYLES box in the PROPERTIES panel.

