

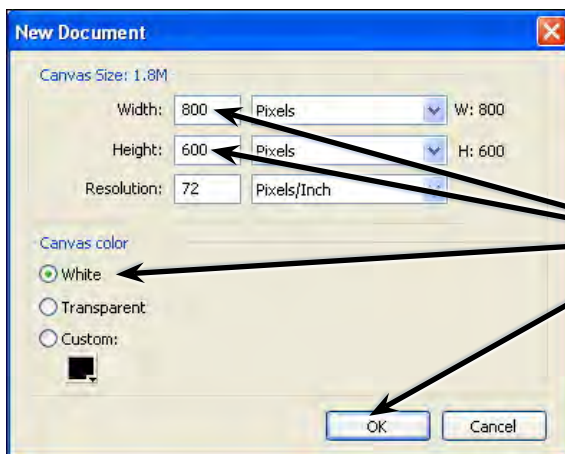
Creating Accurate Shapes

FireWorks provides the tools to create accurate shapes. Let's say that you have been contracted by the software producer, ArtSoft, to produce an image of the box for their recently released graphics program, Splosh Strokes, so that it can be placed on their web site. The following image will be produced:



Starting a New Document

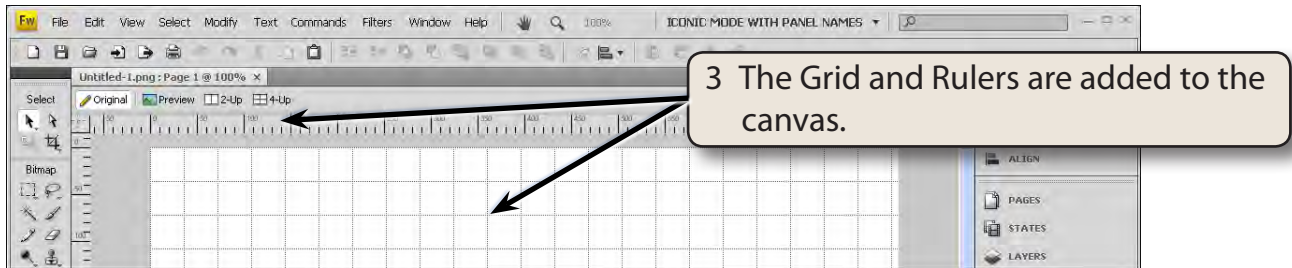
- 1 Load FireWorks or close the current file then click on the FIREWORKS DOCUMENT icon in the CREATE NEW section of the WELCOME screen.



- 2 Set the WIDTH to 800 pixels, the HEIGHT to 600 pixels, the CANVAS COLOUR to WHITE and select OK.

Turning on the Rulers and Grid

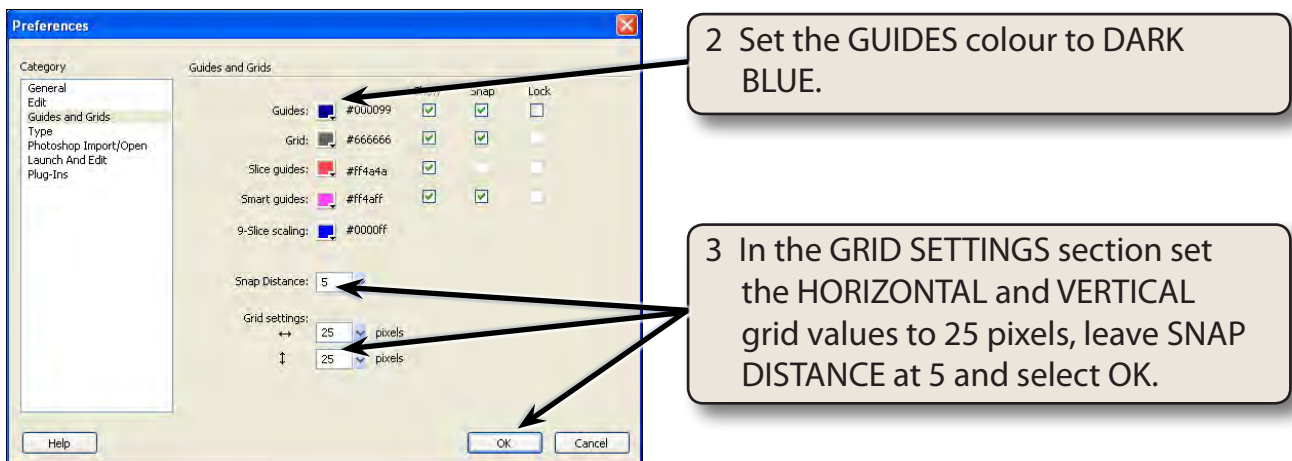
- 1 Display the VIEW menu and select RULERS to turn on the Rulers.
- 2 Display the VIEW menu again, highlight GRID and select SHOW GRID to turn on the grid.



Adjusting the Grid Settings

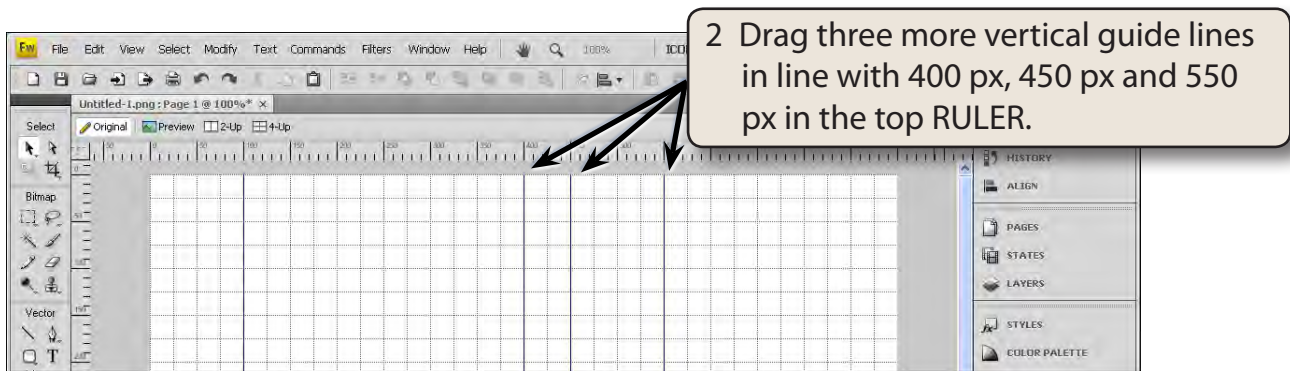
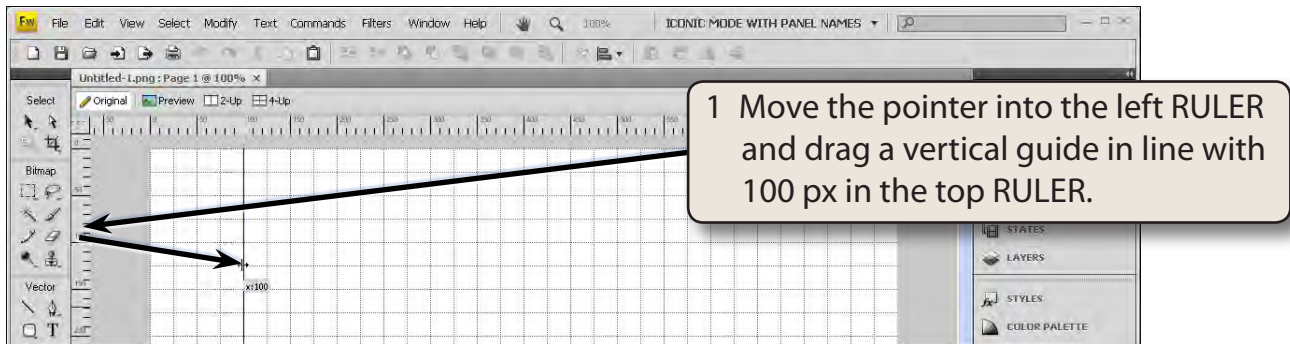
You will be using RULERS and a GRID to accurately create the box, so the Grid settings need match the Ruler units.

- 1 On the Windows system display the EDIT menu, highlight PREFERENCES and select GUIDES AND GRIDS. On the Macintosh system display the FIREWORKS menu, highlight PREFERENCES and select GUIDES AND GRIDS.

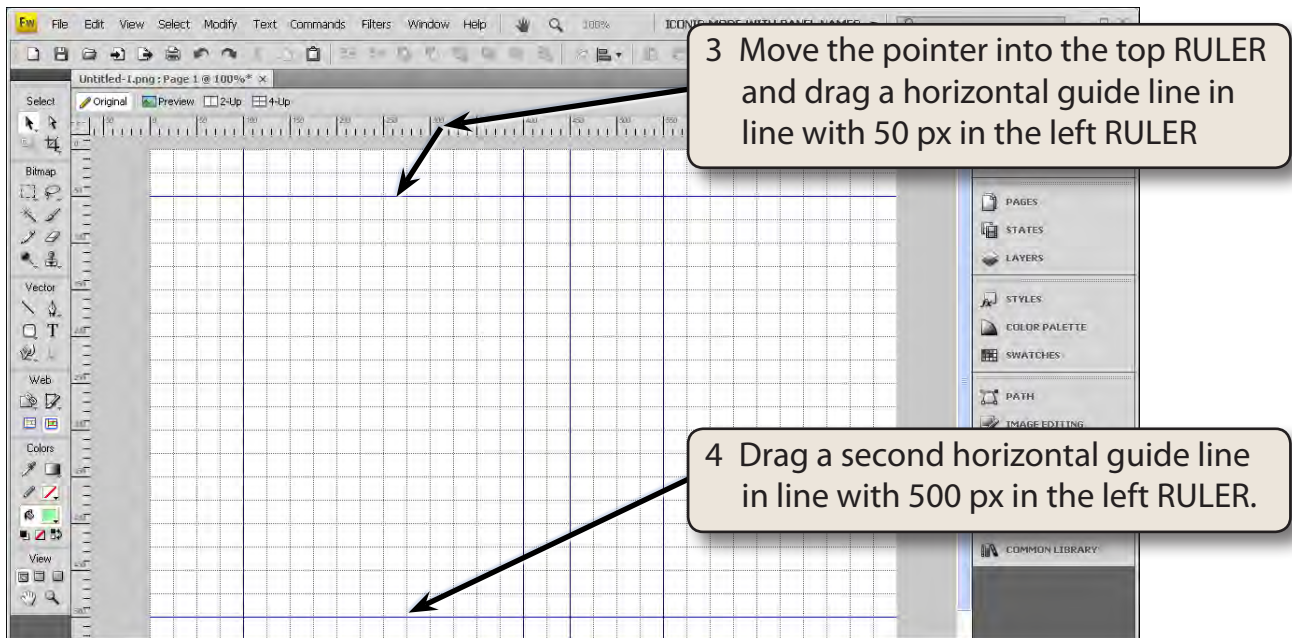


Adding Guide Lines

You can add guide lines to the canvas to help you layout a sketch. In this case guide lines will be needed for the front and side of the box.



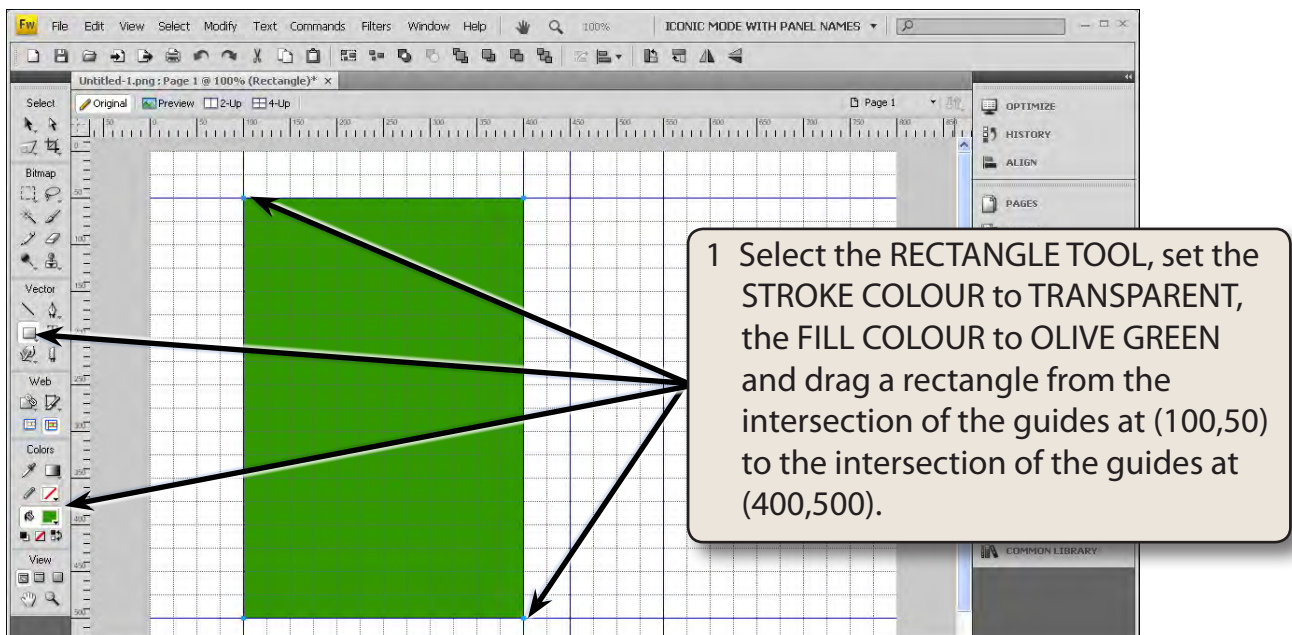
NOTE: You can move guide lines to new positions by selecting the **POINTER TOOL**, moving the pointer over the guide line until it changes to parallel lines with horizontal arrows and dragging the guide line to a new position. Dragging a guide line back to its **RULER** removes the guide line from the canvas.



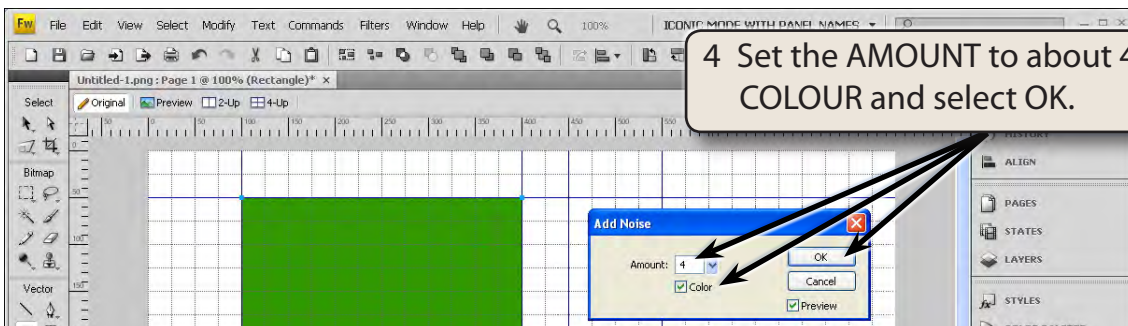
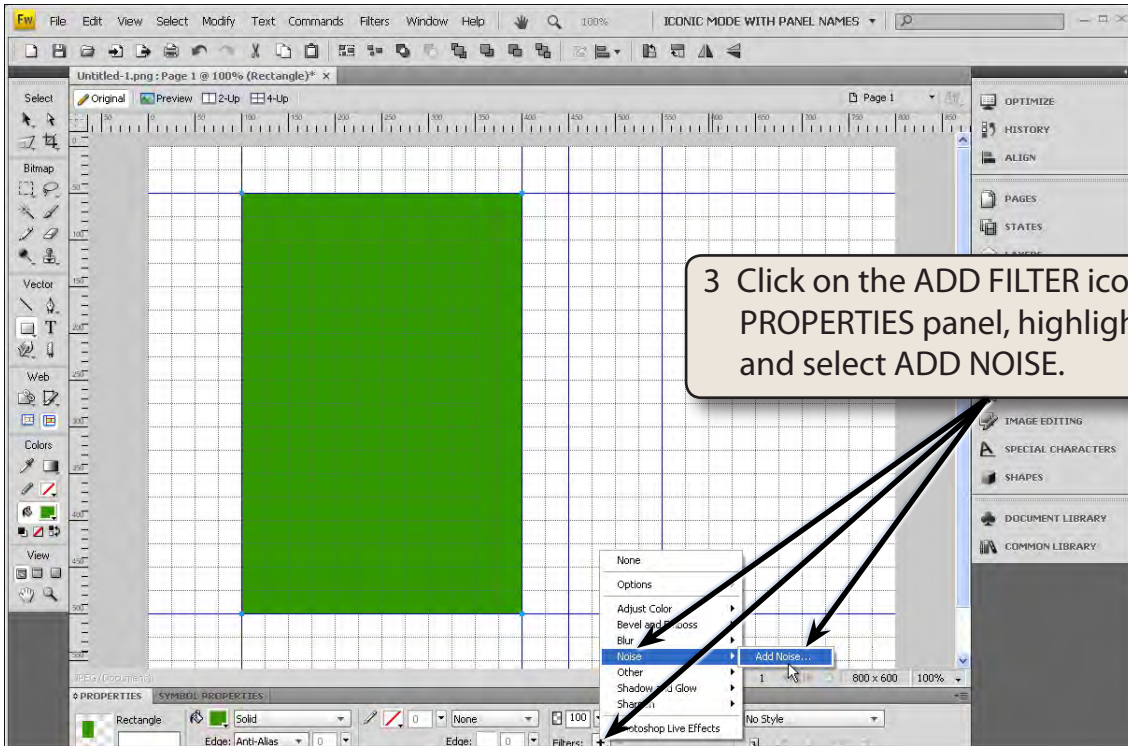
Creating the Front of the Box

A Drawing a Green Rectangle

A rectangular will added to the canvas and filled with green.



2 The colour can be made to look more realistic by adding some noise to the colour.



5 Speckles of colour will be added to the fill of the rectangle.