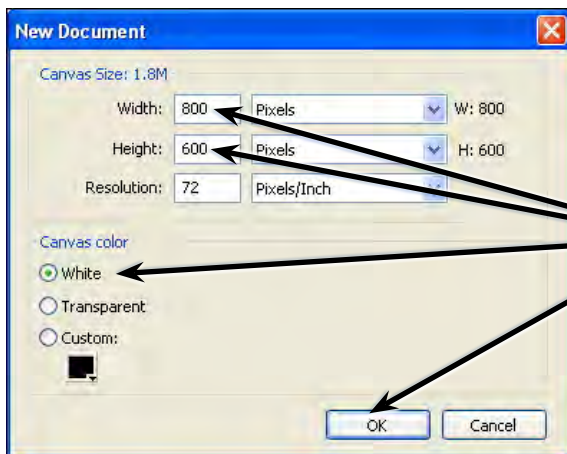


The Pen Tool

The PEN TOOL is one of Adobe FireWorks' more difficult tools, but a necessary tool for creating efficient and more detailed drawings. So, if you are intending to use FireWorks to its fullest, it is worth spending the time to learn the PEN TOOL.

Starting a New Document

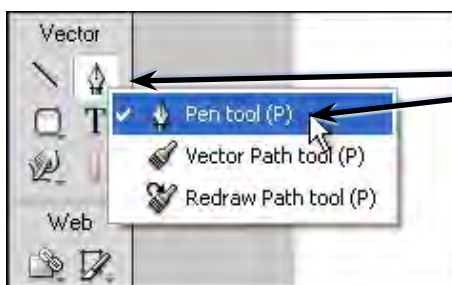
- 1 Load Adobe FireWorks or close the current document.
- 2 In the CREATE NEW section of the WELCOME screen click on FIREWORKS DOCUMENT to start a new document.



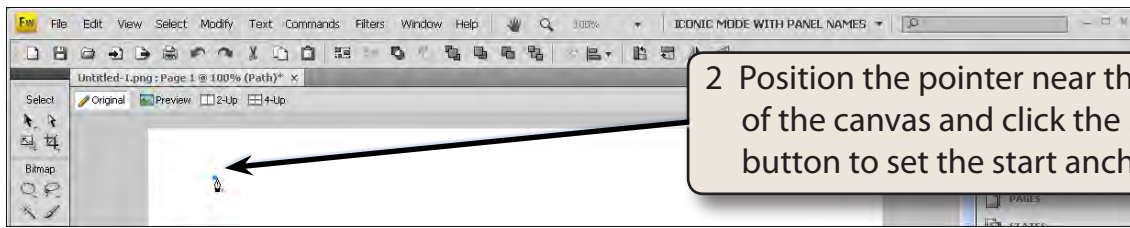
3 Set the WIDTH to 800 pixels, the HEIGHT to 600 pixels, the CANVAS COLOUR to WHITE and select OK.

Drawing Straight Paths

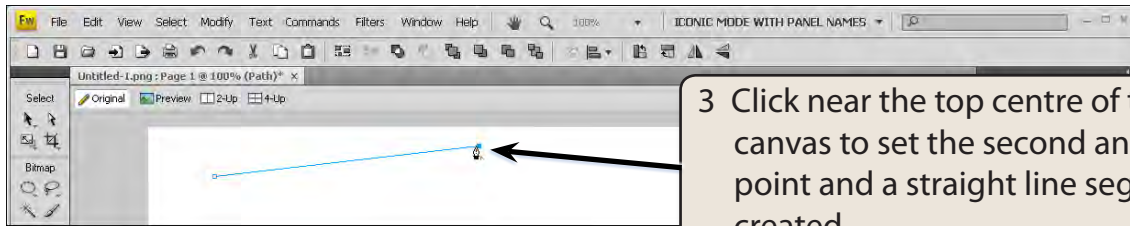
The PEN TOOL can be used to quickly create joined straight lines or objects with straight sides.



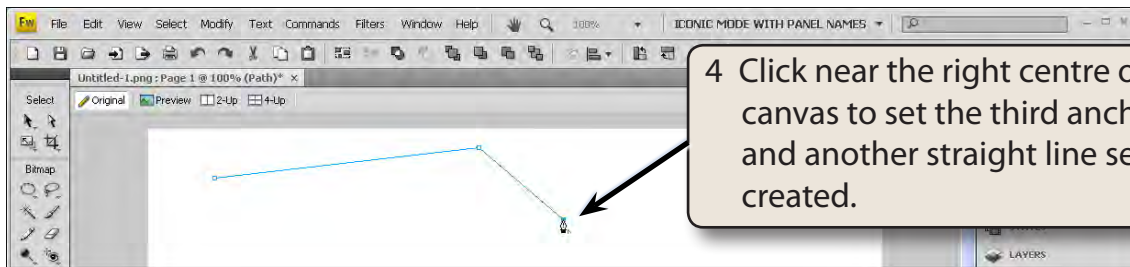
1 Select the PEN TOOL from the VECTOR section of the TOOLS panel.



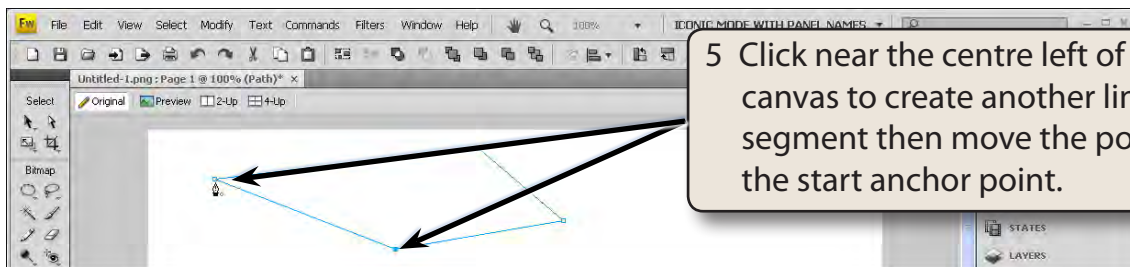
2 Position the pointer near the top left of the canvas and click the mouse button to set the start anchor point.



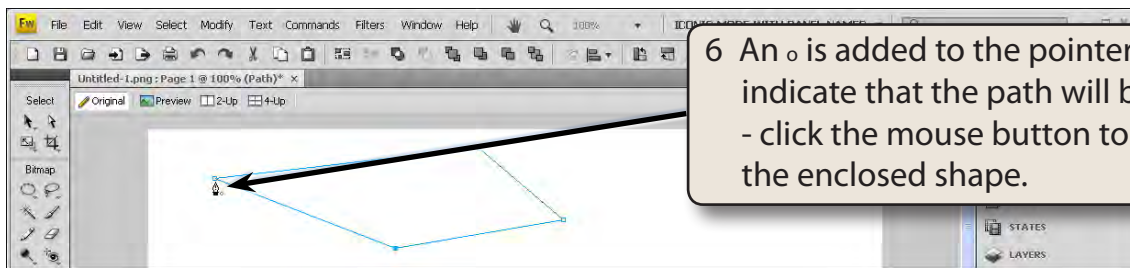
3 Click near the top centre of the canvas to set the second anchor point and a straight line segment is created.



4 Click near the right centre of the canvas to set the third anchor point and another straight line segment is created.

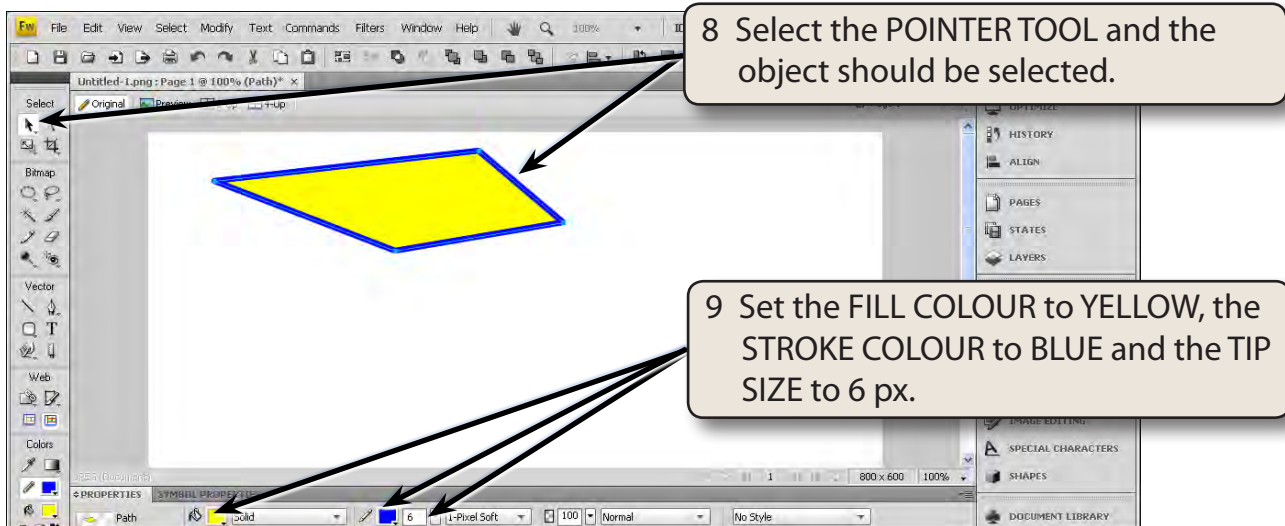


5 Click near the centre left of the canvas to create another line segment then move the pointer over the start anchor point.



6 An o is added to the pointer to indicate that the path will be closed - click the mouse button to complete the enclosed shape.

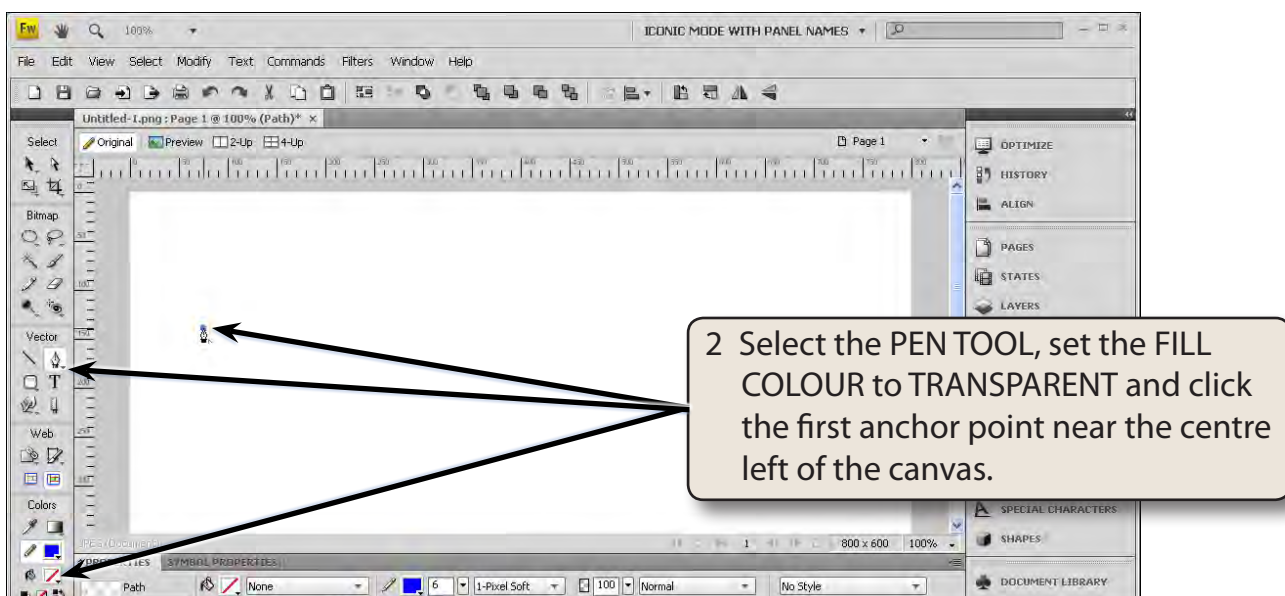
- 7 You can now apply a fill colour to the object or move the object around the canvas like other objects you have created.

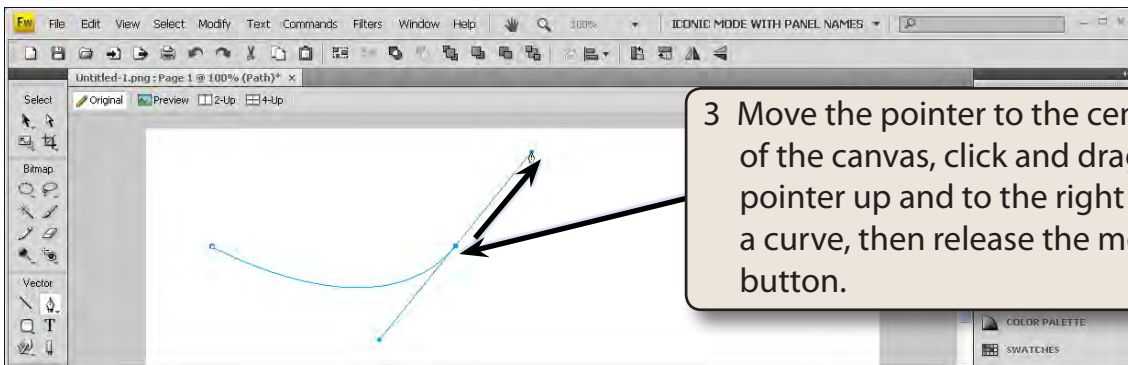


Drawing Curved Paths

The PEN TOOL can be used to create curves with a minimum number of anchor points. This means that the shapes will print faster and be more accurate.

- 1 Delete the previous shape.

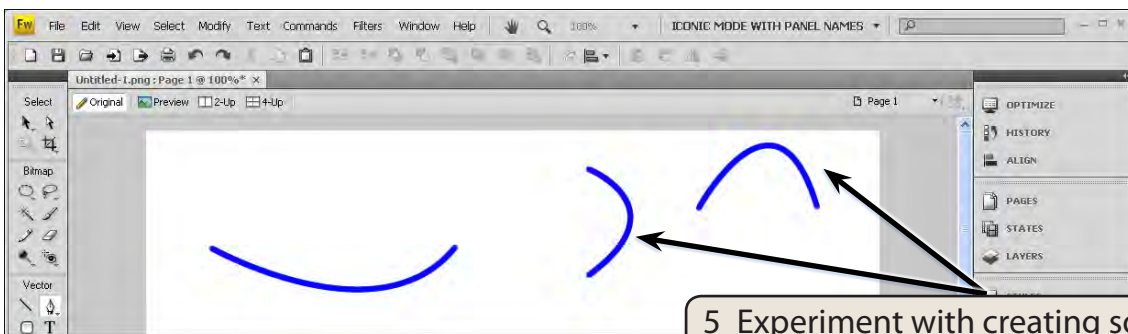




NOTE:

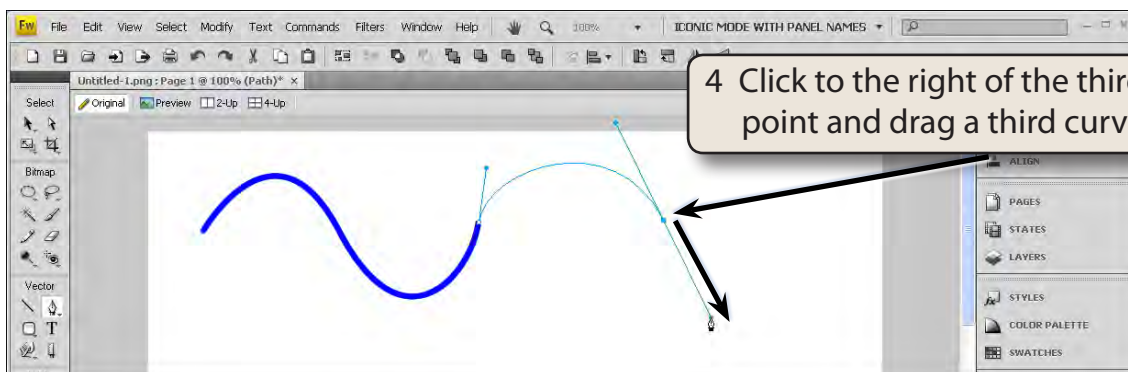
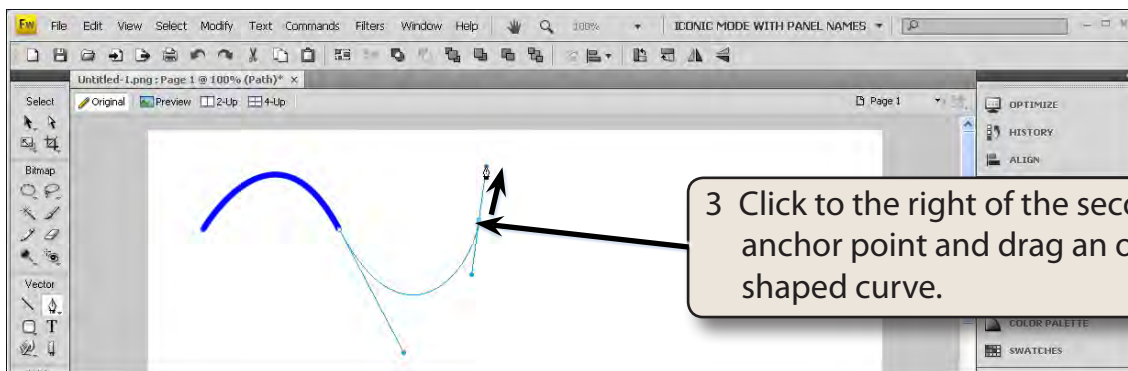
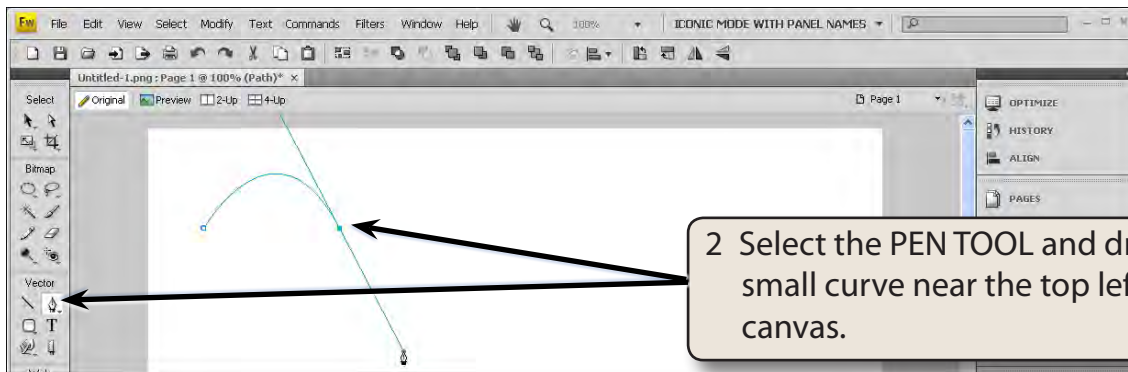
- i When you click and drag an anchor point, lines (called Bezier lines) are added to the point and these can be dragged to create the curve.
- ii In general, you drag in the opposite direction that you want the curve to take.

4 Display the SELECT menu and select DESELECT to set the curve. You can press CTRL+D or COMMAND+D as a shortcut.



Drawing Multiple Connected Curves

- 1 Delete all the objects on the canvas.



- 5 Select DESELECT from the SELECT menu to set the curves.