

# Commands and Snippets

DreamWeaver allows you save steps that you have carried out. It is a very similar process to creating macros or scripts in other programs such as Microsoft Excel, Microsoft Access or FileMaker Pro. It is achieved by creating COMMANDS or using SNIPPETS of code. Using these features helps you to ensure consistency throughout a site and frequently used steps can be automated.

## Creating Commands

The HISTORY panel is used to view the steps you create then selected commands can be stored in the COMMANDS menu. To illustrate the command setting process, a standard table format will be created and a command to set images to a particular size produced.

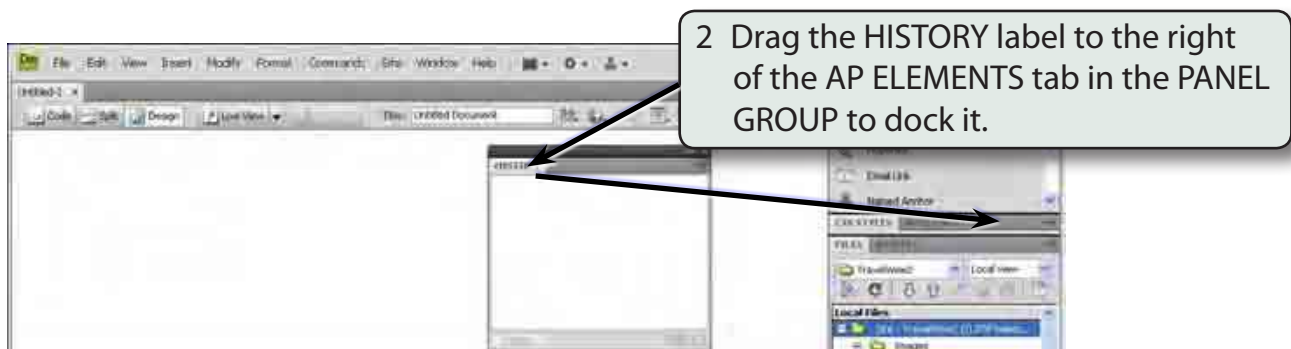
- 1 Load DreamWeaver or close the current page and start a new HTML PAGE.
- 2 Set the FILES panel to your TRAVELWISE2 site and set the screen and DESIGNER view.

## Creating a Table Command

You can create a table command that stores the width of the table, the format to be used, the border setting, cell padding and cell spacing settings, etc. Once the table is inserted into other pages throughout the site the PROPERTIES INSPECTOR can be used to alter the number of rows and columns required. All the other settings will be provided by the TABLE command.

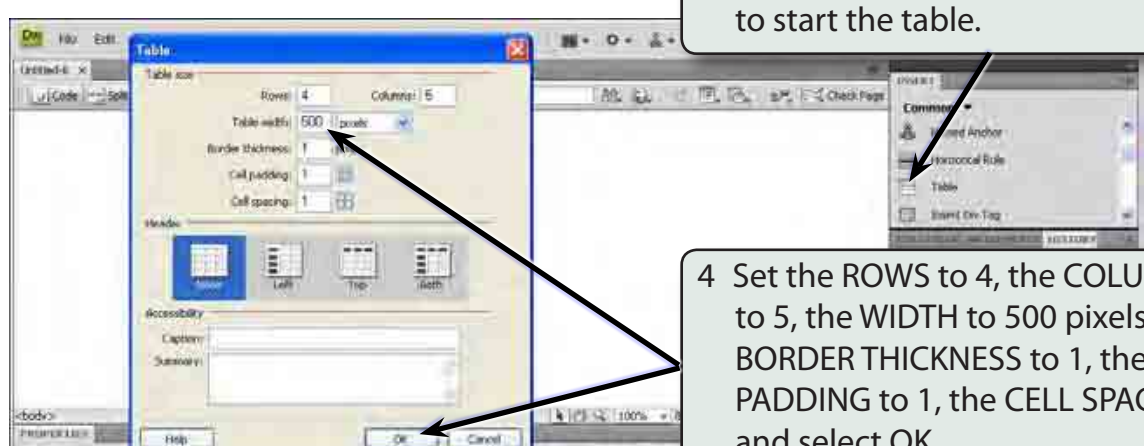
### A Inserting the Table

- 1 Display the WINDOW menu and select HISTORY to open the HISTORY panel. The HISTORY panel will display each of the steps as you carry them out.

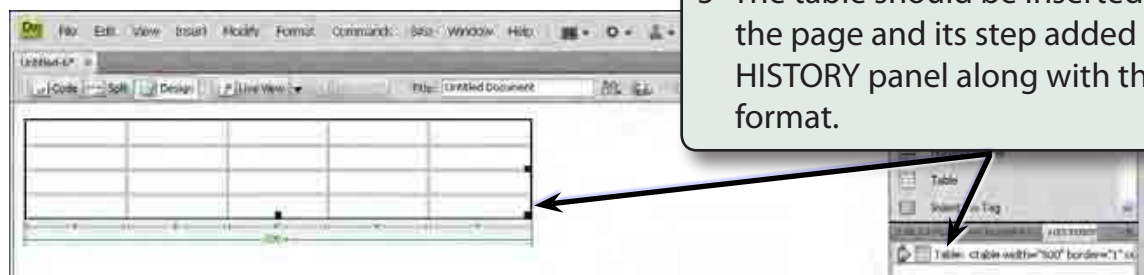


3 Select the TABLE button in the COMMON tools of the INSERT panel to start the table.

4 Set the ROWS to 4, the COLUMNS to 5, the WIDTH to 500 pixels, the BORDER THICKNESS to 1, the CELL PADDING to 1, the CELL SPACING to 1 and select OK.



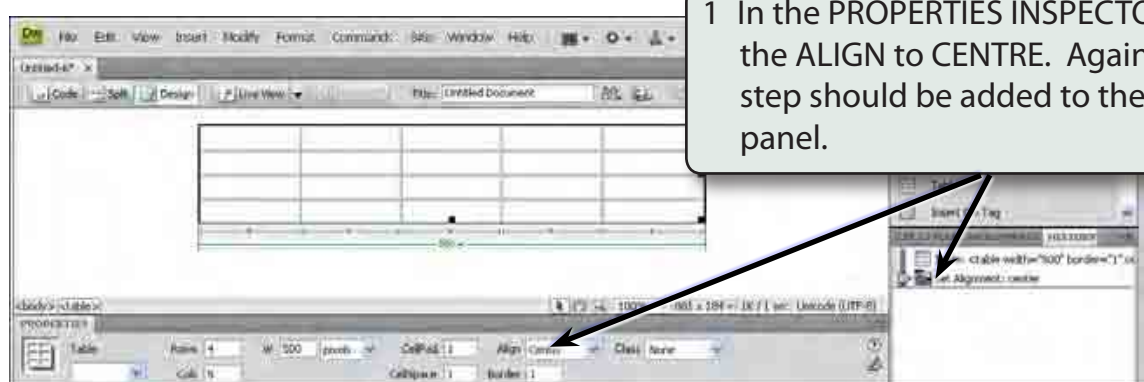
5 The table should be inserted on the page and its step added to the HISTORY panel along with the table format.

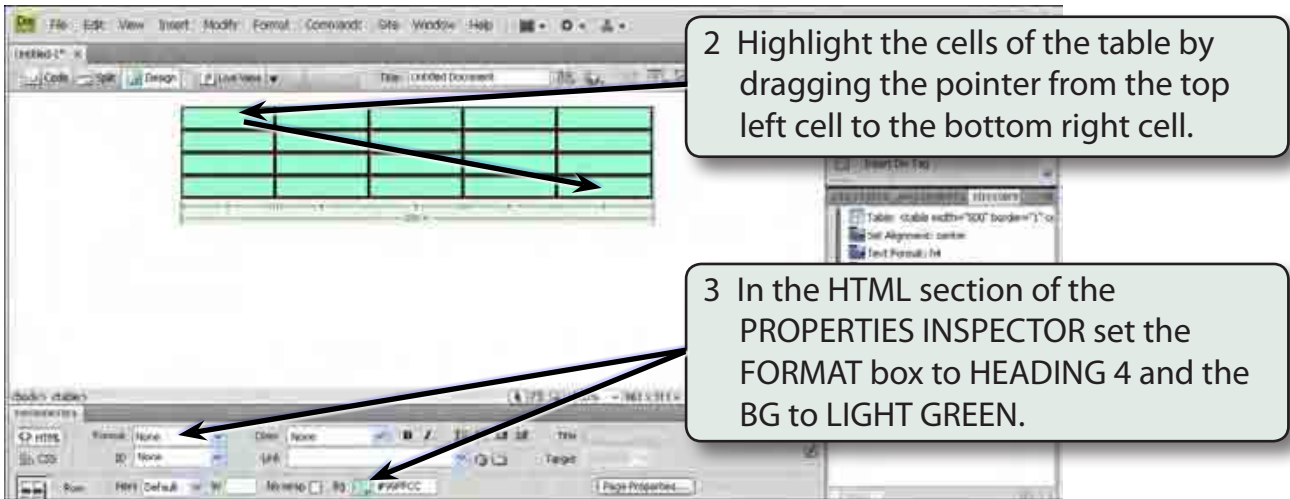


## B Formatting the Table

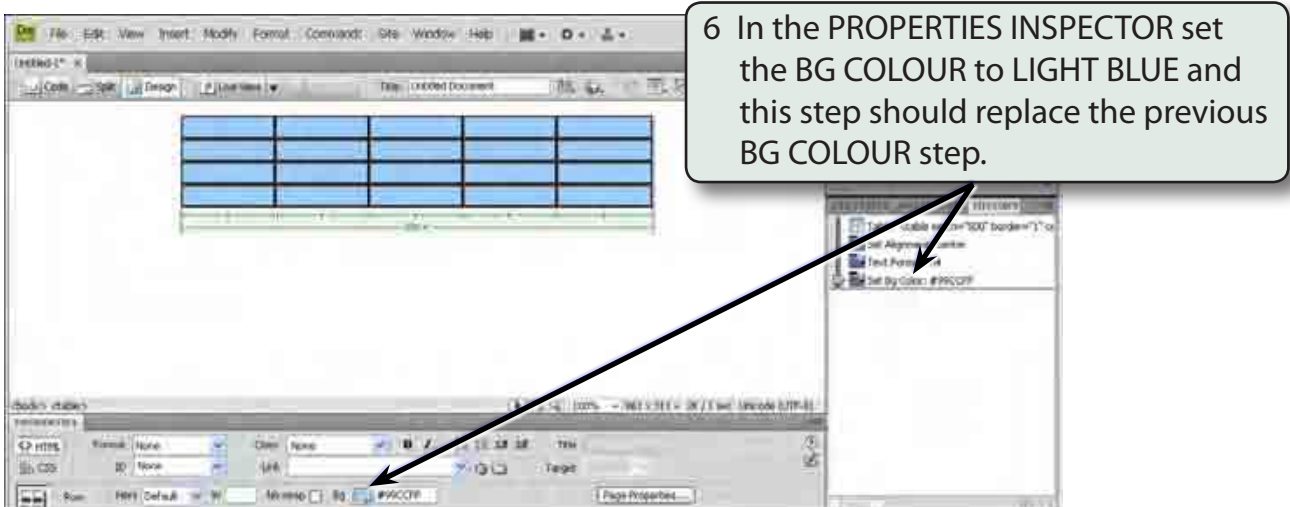
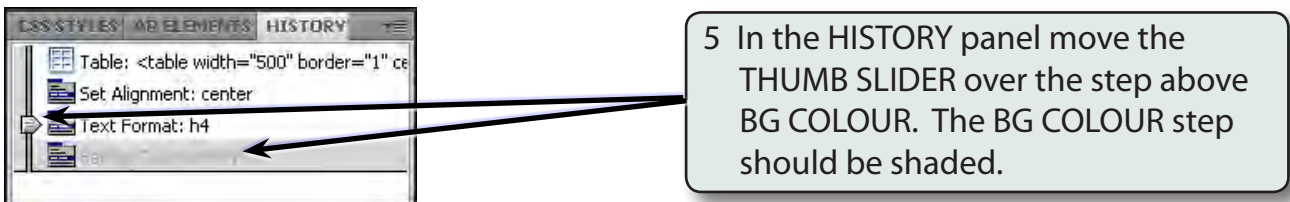
Some table formats can be added to the commands.

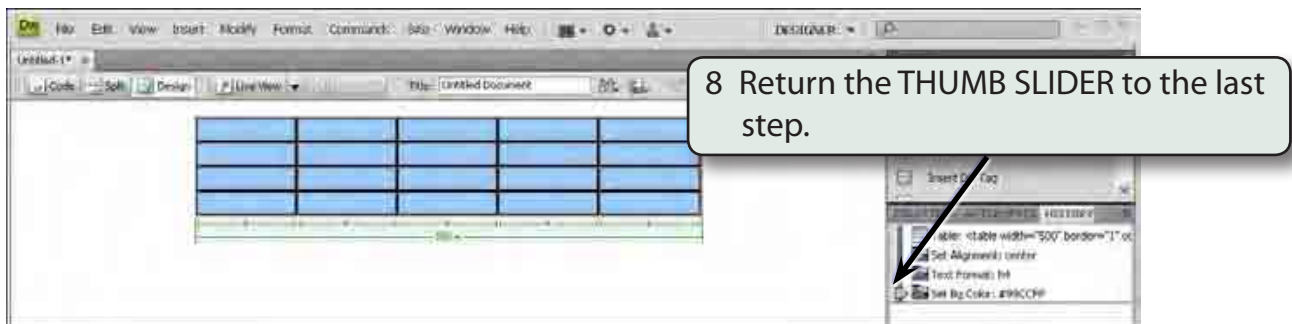
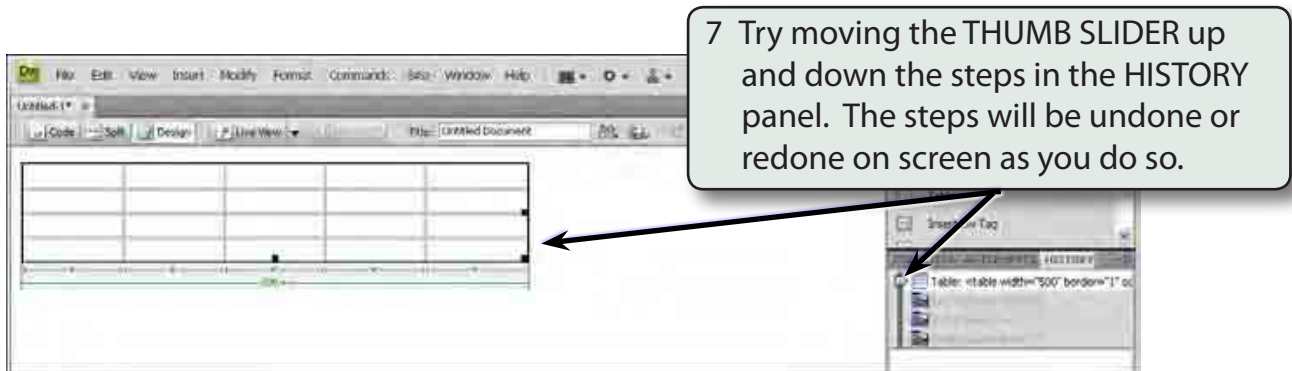
1 In the PROPERTIES INSPECTOR set the ALIGN to CENTRE. Again, this step should be added to the HISTORY panel.





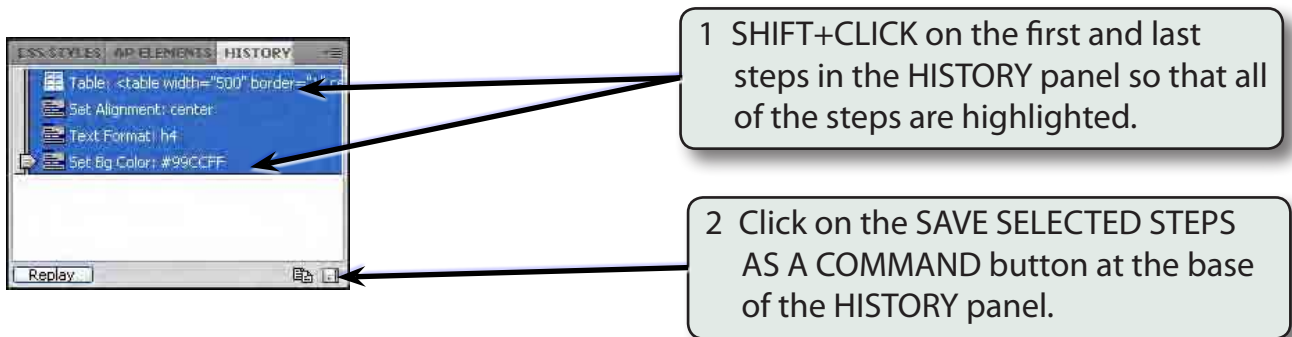
4 If you make a mistake when setting steps you can delete the incorrect step. Let's say we want the background colour in the table to be LIGHT BLUE rather than LIGHT GREEN.





## C Saving the Table Command

The steps can now be saved so that the table can be inserted into other pages.



**NOTE:**

- i If you only wanted some steps to be included in the command, just the required steps would be highlighted.
- ii CSS styles cannot be saved as a COMMAND, so you cannot set fonts, font colours or font sizes.