

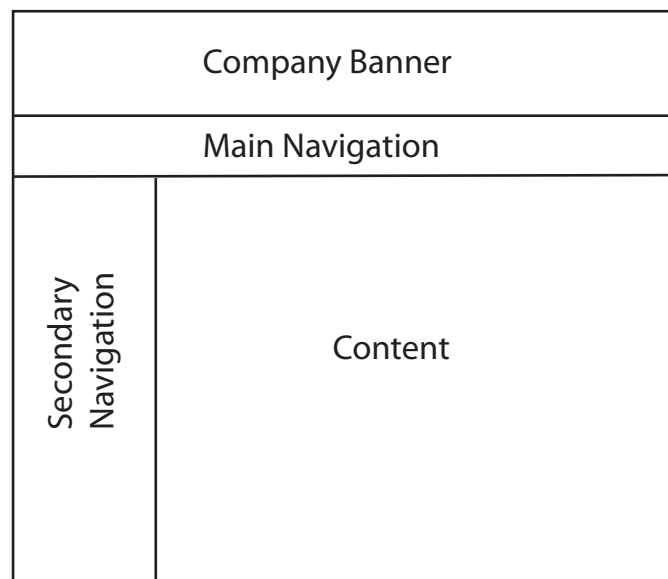
Laying out a CSS Based Page

Style sheets can not only be used to record the text formatting of a page they can also be used to store the layout information as well. Laying out pages using CSS styles involves storing all the text format and layout information in a separate CSS STYLES SHEET file. The advantages of doing this are:

- There is less code in the page so the page loads faster.
- The pages can be made to look the same on different sized screens.

Laying out pages using CSS styles is a little more involved than entering text and images straight onto a page, but it has become the standard way of creating detailed web page designs, so it is worth the initial effort.

To make the process easier a new site will be created. The pages will have the following structure, without a table being used.



The page layout will be created in this chapter and content added to it in the next chapter.

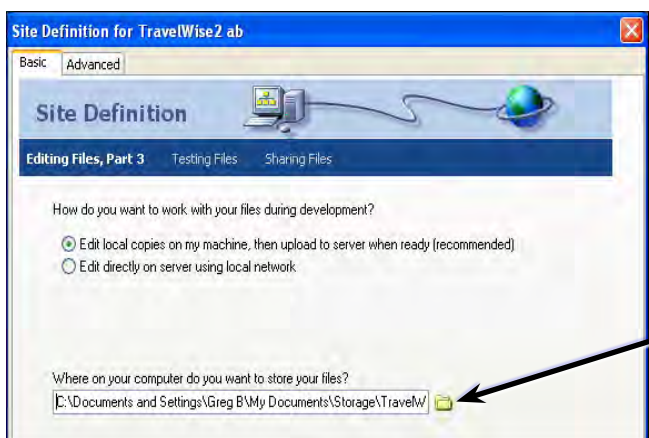
Starting a New Site

- 1 Load DreamWeaver or close the current documents.
- 2 Display the SITE menu and select NEW SITE.



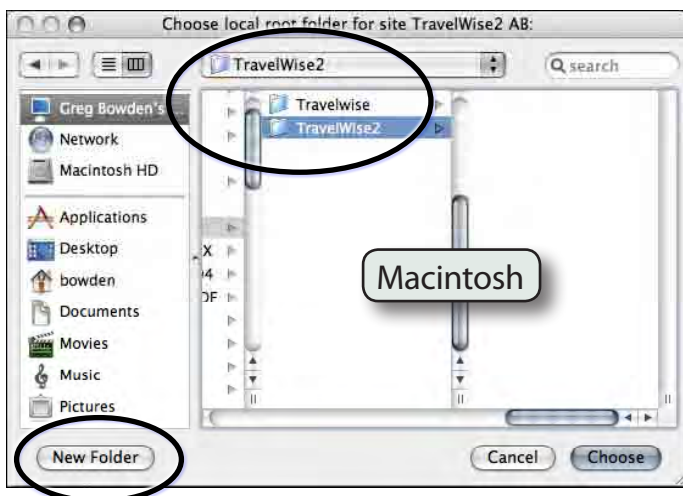
3 Click on the BASIC tab and call the site:
TravelWise2 <your initials>
then click on NEXT.

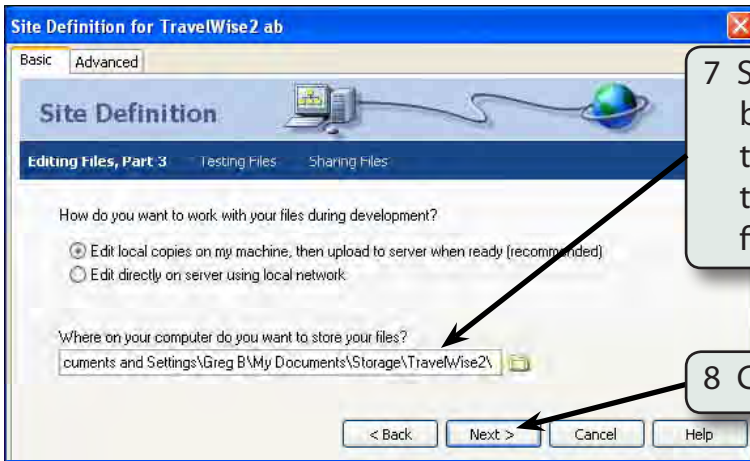
4 Select NO to SERVER TECHNOLOGIES and click on NEXT.



5 Click on the folder icon next to the 'Where do you want to store the files?' section.

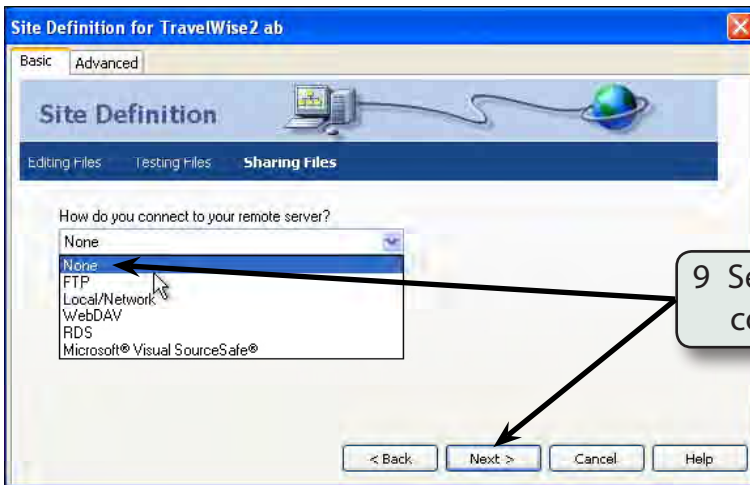
6 Access your STORAGE folder and create a new folder called TRAVELWISE2, referring to the following diagrams.





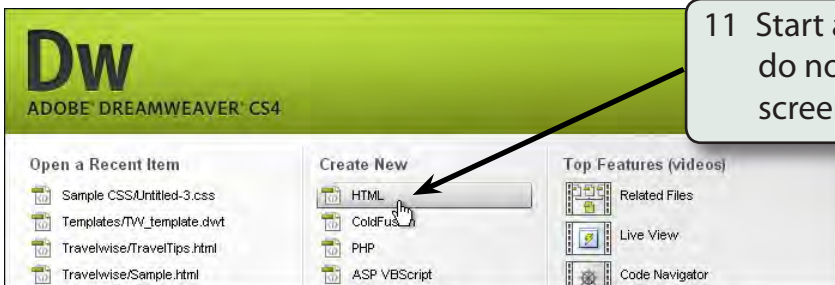
7 Select OPEN or CHOOSE followed by SELECT (Windows) and the path to the folder should be added to the 'Where do you want to store the files?' box.

8 Click on the NEXT button.



9 Select NONE for the REMOTE SERVER connection and click on NEXT.

10 Click on DONE to create the site.

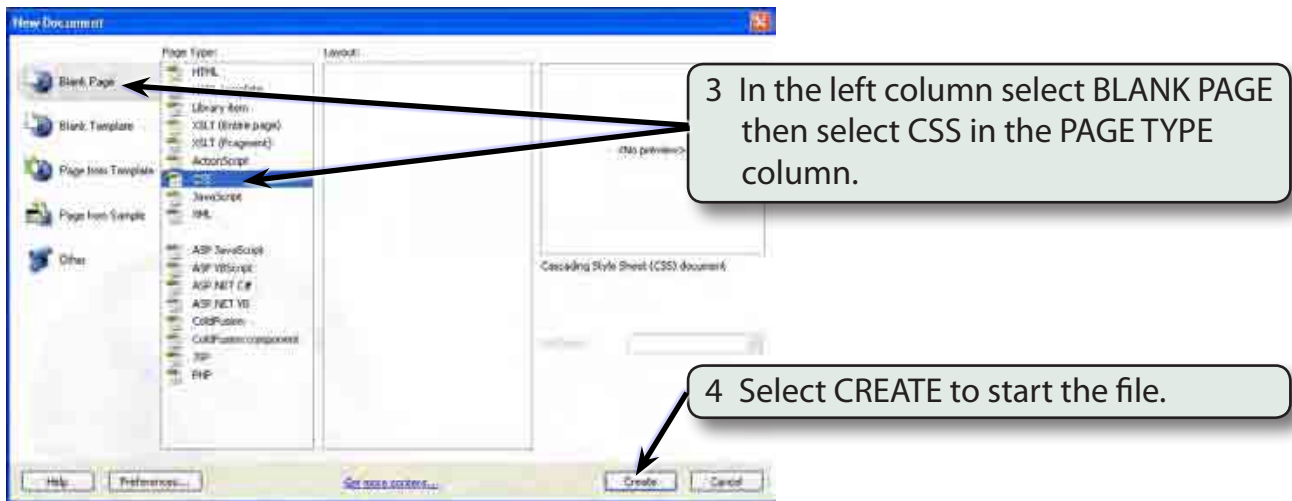


11 Start a new HTML page if you do not have a blank page on the screen.

Saving the Pages

Two pages need to be saved. The blank HTML page and the external CSS page that will be used to store all the formatting and layout information.

- 1 Save the current untitled page in the TRAVELWISE2 folder as:
index or index.html
- 2 Display the FILE menu and select NEW to create a new page.



- 5 Save the page in your TRAVELWISE2 folder as:
tw.css
referring to the following diagrams.

