

# Using Templates and Layout Tools

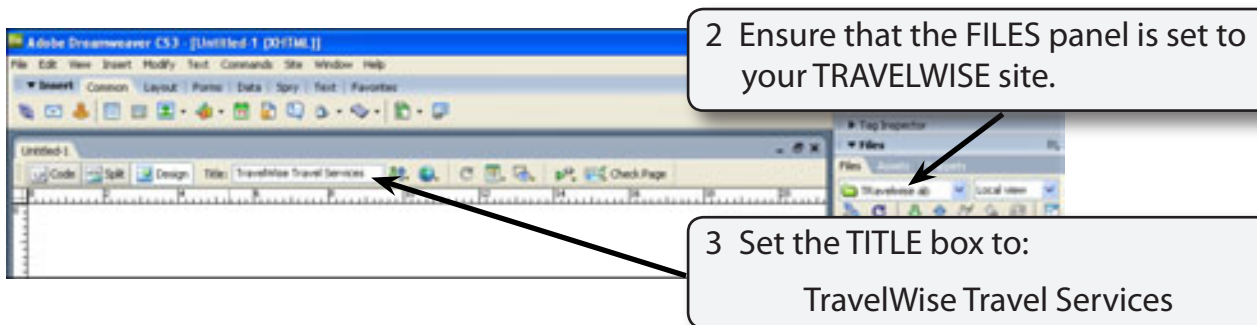
When you want to create more detailed web sites that have more design elements to them using TEMPLATES is one of the most effective methods to use. Templates are page setups that can be applied to other pages. They are basically master pages. DreamWeaver also provides LAYOUT tools which can be used together with Templates. Layout tools allow you to create more detailed tables than the TABLE command.

To illustrate these two features the TravelWise web site will be adjusted.

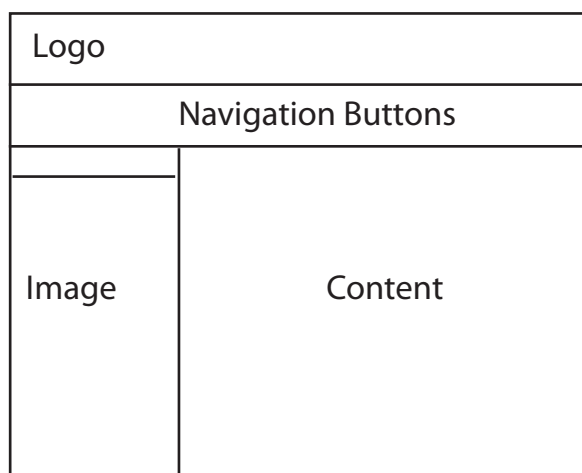
## Creating the Template

The template will be created from a blank page, however an existing page can be converted into a template if necessary.

- 1 Load DreamWeaver, or close the current page and start a new BASIC HTML PAGE.



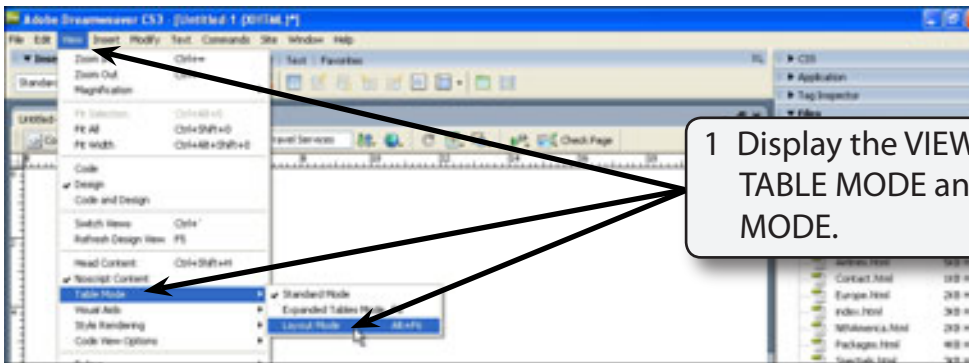
- 4 A template for the site will be created then applied to a series of other pages. The design of the template will have the following structure.



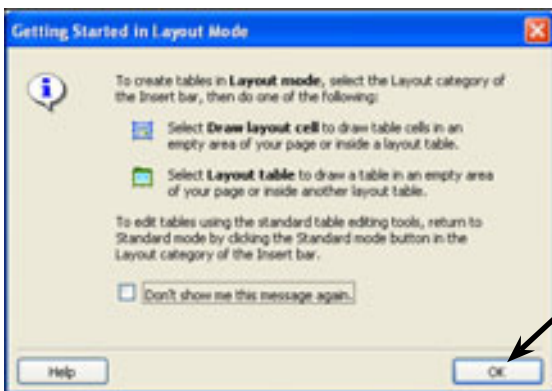
**NOTE:** The small cell above the image cell will be blank. It will serve to separate the image from the navigation buttons. It is called a SPACER cell.

## A Switching to Layout Mode

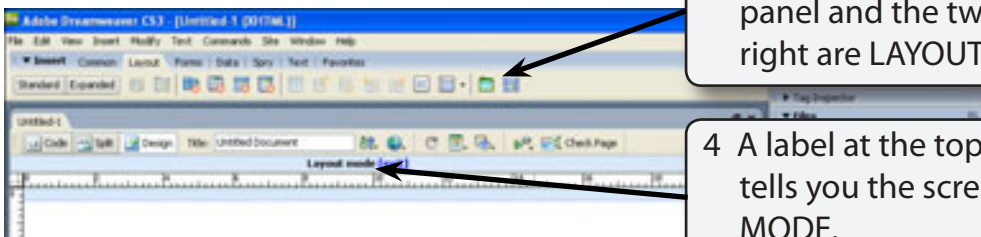
There are three LAYOUT modes available in DreamWeaver: STANDARD, EXPANDED and LAYOUT. When you first open a DreamWeaver page it set to STANDARD MODE. However, LAYOUT MODE allows you to create more detailed tables.



1 Display the VIEW menu, highlight TABLE MODE and select LAYOUT MODE.

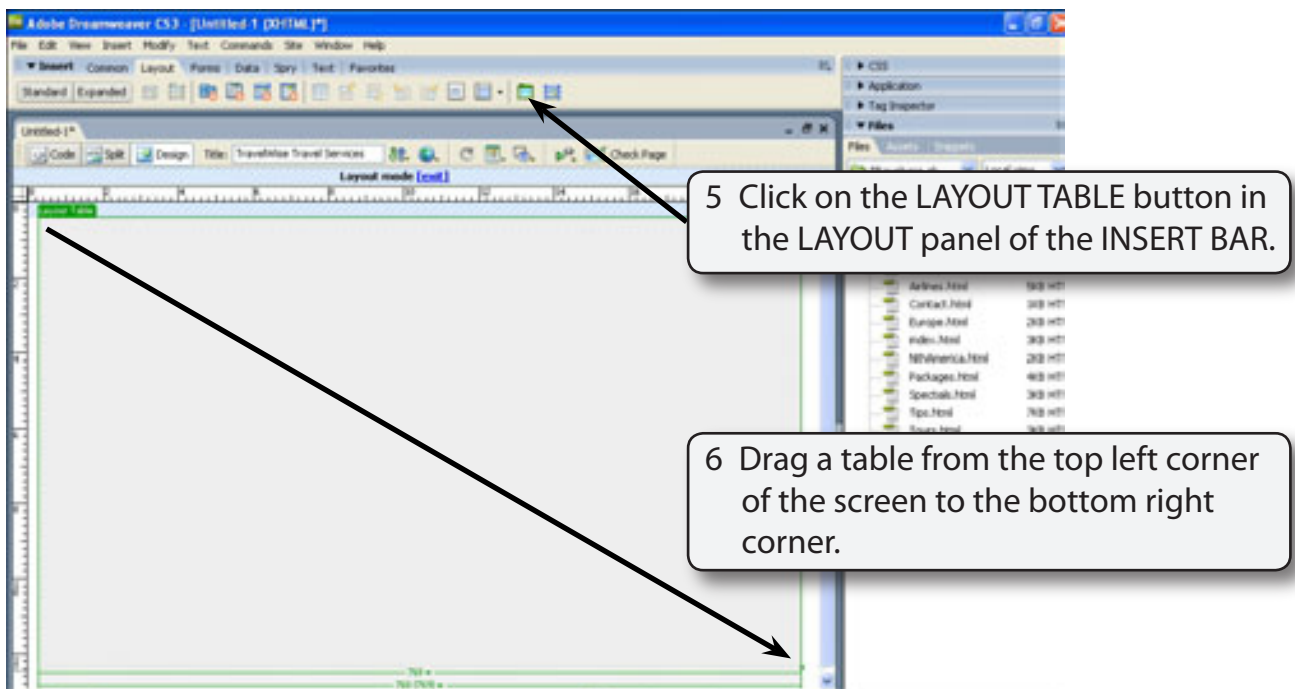


2 Select OK to the Information Box which explains the two main buttons used in LAYOUT mode.

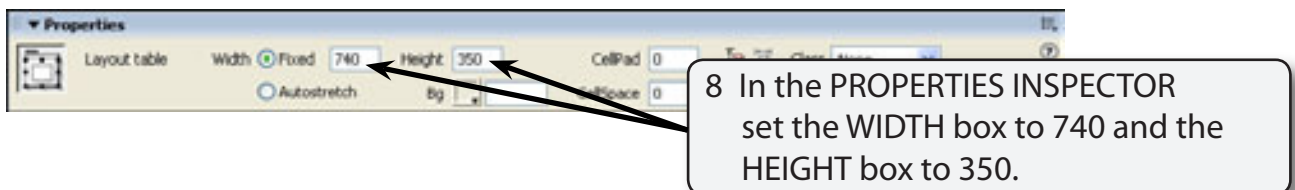


3 Set the INSERT BAR to the LAYOUT panel and the two buttons at the right are LAYOUT TOOLS.

4 A label at the top of the word page tells you the screen is set to LAYOUT MODE.



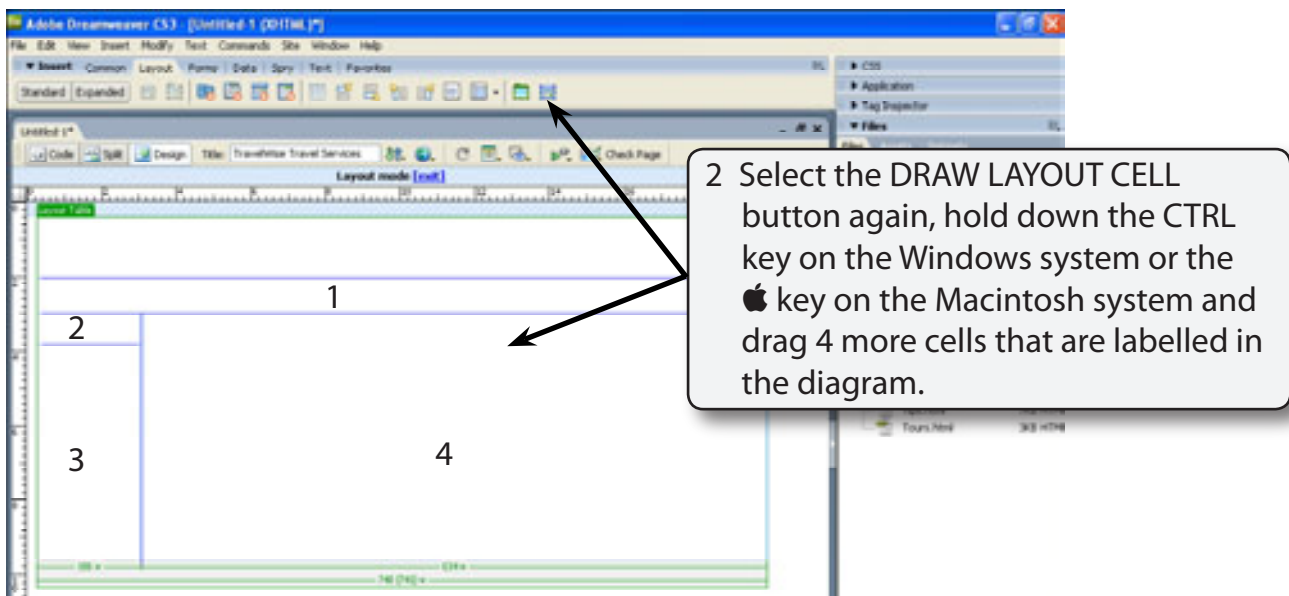
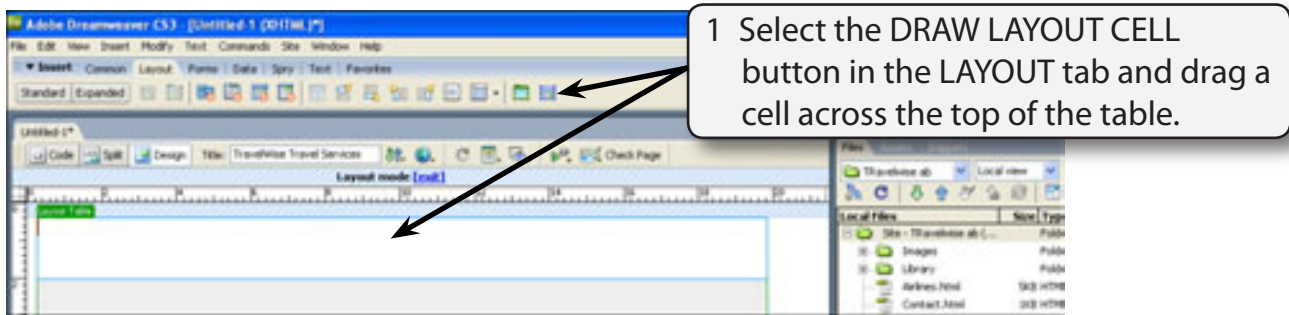
7 The dimensions of the layout table can be accurately set.



**NOTE:** As with normal tables you can also use the **PROPERTIES INSPECTOR** to set cell padding, cell spacing and background colour.

## B Adding the Layout Cells

After the table has been set, individual cells can be added to the table.

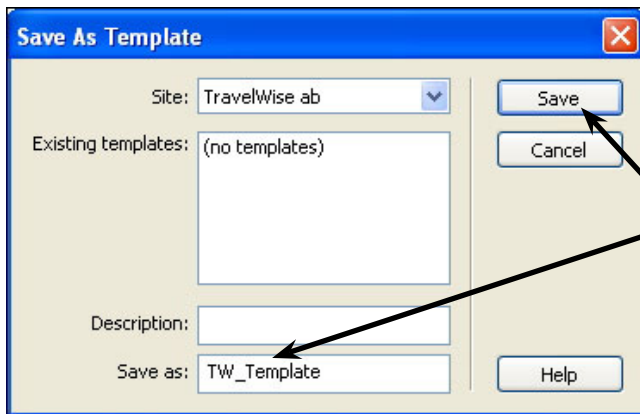


- NOTE:**
- i The small cell (2) is the SPACER cell to separate the navigation buttons (cell 1) from an image in cell 3. It will not have any content.
  - ii The CTRL or Apple key allows you to draw cells without having to re-select the DRAW LAYOUT CELL button.
  - iii You can click on the border of any cell and use its 'handles' to adjust the cell size.

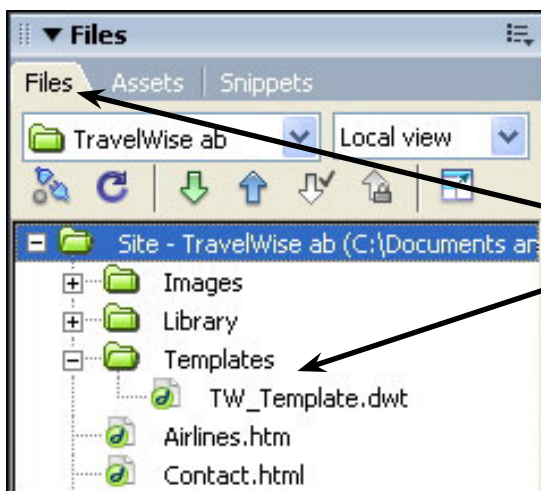
## Saving the Page as a Template

The page can now be saved as a template rather than as a normal page. By doing this other pages can be given its design.

- 1 Display the FILE menu and select SAVE AS TEMPLATE.



- 2 In the SAVE AS TEMPLATE dialogue box set the SAVE AS box to TW\_Template and click on SAVE.



- 3 DreamWeaver saves the page in a folder called TEMPLATES within your site's folder. Open the folder to see the template.