

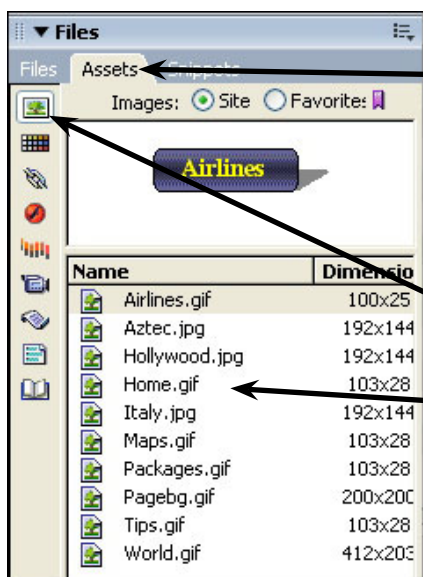
Site Assets and Library Items

One of the many advantages of maintaining a site in DreamWeaver is that all the required graphics, colours, backgrounds, buttons, etc. can be used from the SITE panel at any time. These items are called the site's ASSETS. DreamWeaver allows you to separate the assets into groups to make them easier to use.

The Assets Panel

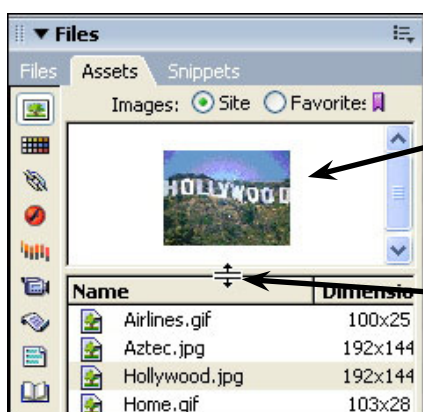
Items stored in your site folder can be displayed using the ASSETS panel.

- 1 Load DreamWeaver cs3 or close the current files.
- 2 Set the FILES panel to your TRAVELWISE site and open the INDEX.HTML page.



3 In the FILES panel click on the ASSETS tab to display the ASSETS panel.

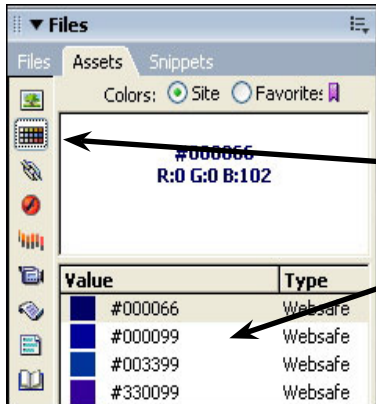
4 The IMAGES button (top button on the left) should be selected. If it isn't, click on it. The IMAGES section displays all the images used in the site, regardless of which folder they are saved in.



5 Click on a few of the IMAGES in turn and the image is displayed at the top of the ASSETS panel.

6 If the image is not displayed at the top of the ASSETS panel drag the bar above the NAME heading down so that there is room in the panel to display the image.

- 7 The buttons at the left of the ASSETS panel separate the site into the different types of resources.



8 Click on the next button down (the COLOURS button) and all the different colours used in the site will be displayed.

NOTE: The TYPE column indicates whether the colour is one of the 216 web safe colours that will display accurately on any browser or any computer platform.

- 9 The other buttons will display any URL links to other pages, Flash buttons or text that have been used, any Shockwave effects, movies, scripts, templates or library items. Some of these will be used in later chapters.

Using the Assets Panel

The ASSETS panel will now be used to create another page about airline details. We can ensure that the text colours used are the same as those used on other pages as well as insert images as needed. The page has been prepared for you.

A Loading the Prepared Page

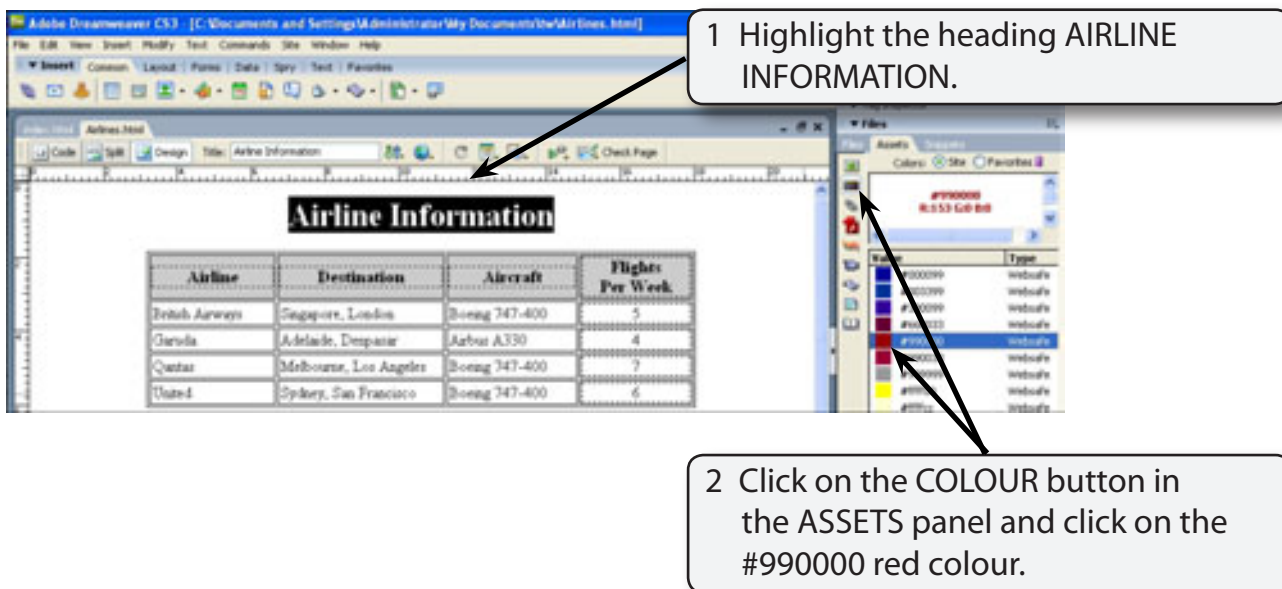
- 1 Display the FILE menu and select OPEN.
- 2 Access the DWcs3 SUPPORT FILES and open the CHAPTER 6 folder.
- 3 Open the AIRLINES.HTML file.

- 4 Save the page in your TRAVELWISE folder as:

Airlines (Windows system)
Airlines.html (Macintosh system)

There is no need to UPDATE LINKS.

B Applying Assets



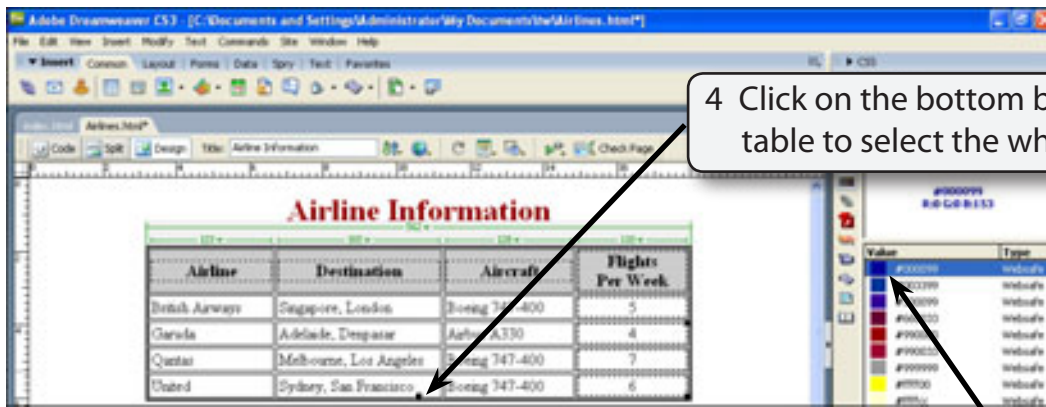
1 Highlight the heading AIRLINE INFORMATION.

2 Click on the COLOUR button in the ASSETS panel and click on the #990000 red colour.

Airline	Destination	Aircraft	Flights Per Week
British Airways	Singapore, London	Boeing 747-400	5
Garuda	Adelaide, Denpasar	Airbus A330	4
Qantas	Melbourne, Los Angeles	Boeing 747-400	7
United	Sydney, San Francisco	Boeing 747-400	6

- 3 Click on the APPLY button at the base of the ASSETS panel to set the text to the red colour. This has ensured that the heading on this page is the same shade of red as the headings on the other pages.

NOTE: You can open previous pages, click on text you have set to a colour and check that colour in the **PROPERTIES INSPECTOR**. You can also open each page in the site and apply the same colour from the **ASSETS** panel to each heading.

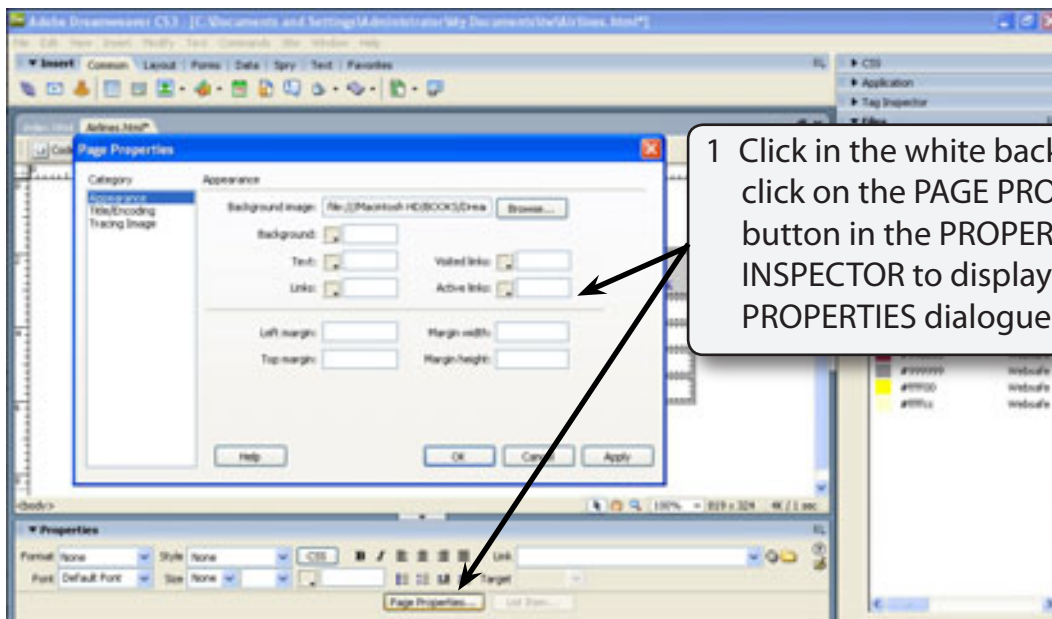


4 Click on the bottom border of the table to select the whole table.

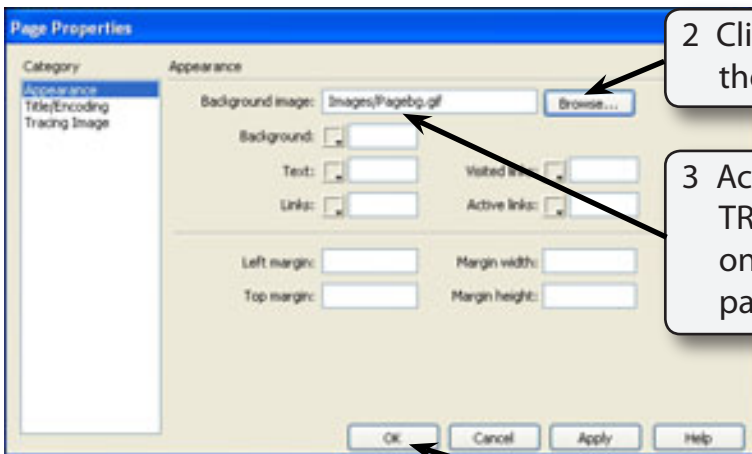
5 Click on the #000099 blue colour in the ASSETS panel.

6 Click on the APPLY button at the base of the ASSETS panel to set the text to that colour.

C Adding a Background Image



1 Click in the white background then click on the PAGE PROPERTIES button in the PROPERTIES INSPECTOR to display the PAGE PROPERTIES dialogue box.



2 Click on the BROWSE button next to the BACKGROUND IMAGE box.

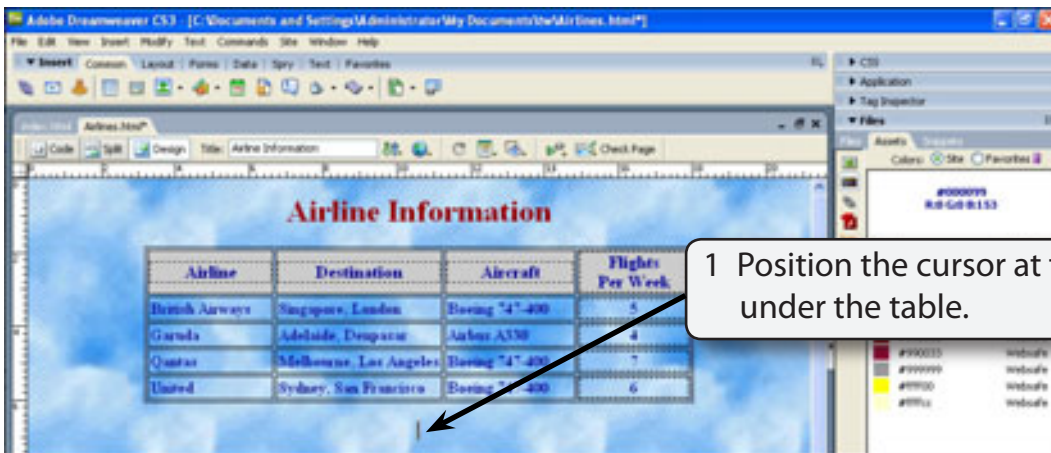
3 Access your IMAGES folder within your TRAVELWISE folder and double click on the PAGEBG.GIF image to add its path to the BACKGROUND IMAGE box.

4 Select OK to place the background on the page.

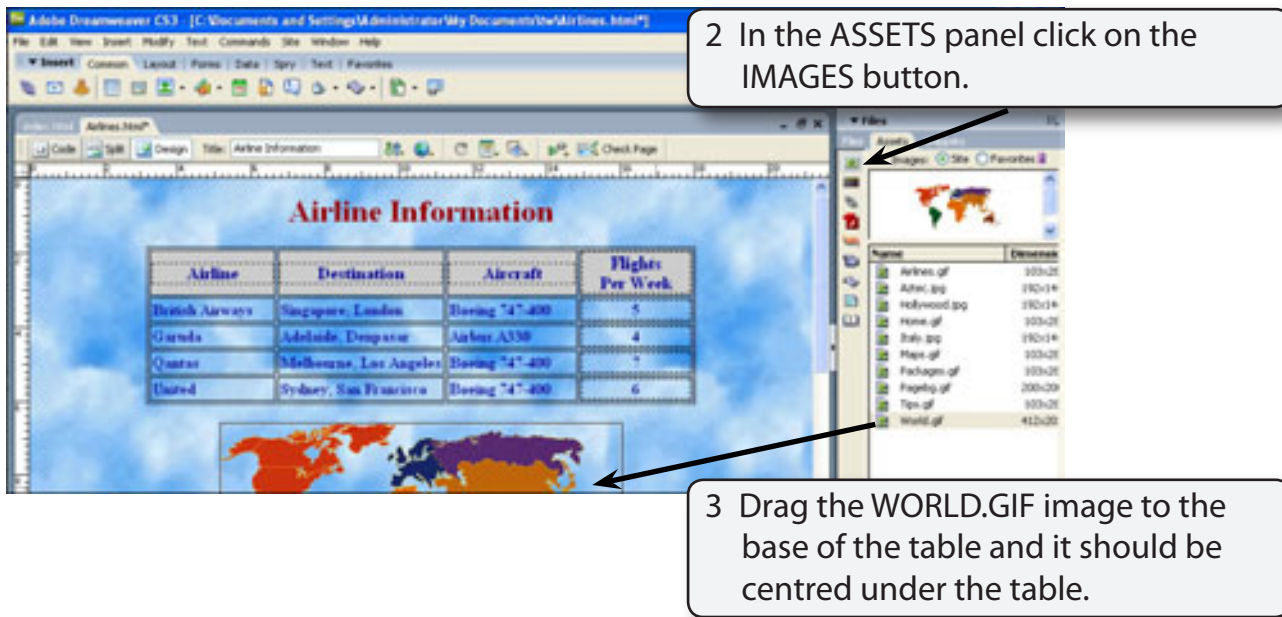
NOTE: You might like to set the text in the bottom 4 rows of the table to **BOLD** so that it is easier to read over the background.

D Inserting the World Image

The WORLD image will be inserted below the table from the ASSETS panel.



1 Position the cursor at the blank line under the table.



NOTE:

- i You might prefer to find an image of a plane, save that image in your IMAGES folder then insert it below the table in place of the world map.
- ii You can add as many copies of an image from the ASSETS panel as required.

4 Save the page, preview it in a browser then return to DreamWeaver.

Using Library Items

Another valuable part of the ASSETS panel is the LIBRARY section. Library items are text or graphics that are saved in the LIBRARY section then added to various pages. Any changes made to a LIBRARY item are automatically updated to all occurrences of that item. For example, if you want a company logo to be updated periodically you would place that logo as a library item on each page. The logo would then only need to be updated in the Library. If you have text that is to be used on numerous pages it can be placed in the library and dragged to the necessary pages when required.

To illustrate the use of LIBRARY items we will add some text to indicate when the page was modified on a few pages, then alter it. We will also place the table of link buttons in the library so that any changes to the links will be updated in the library rather than having to open each page and adjust the links.