

Anchor Points and Hotspots

Some other types of links that are used within web sites are Anchor Points and Hotspots. Anchor Points are links within a page that allow the user to move to sections of the page that are not visible on the screen. Hotspots allow you to assign areas of the page that can be set to a link.

Links Within a Page

There are times when you may have a long page of text and/or images that won't fit on the screen. You can provide links within the page so that the user can quickly skip from section to section. This is achieved by setting ANCHOR points then setting links to those points.

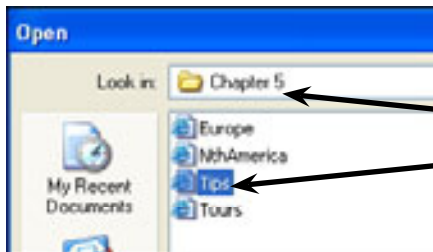
A page with two screens of text has been prepared for you. It needs ANCHOR POINTS inserted. If you do not have access to the DWcs3 SUPPORT FILES find or create a page with about two screens of text.

A Loading the Prepared Page

- 1 Load DreamWeaver cs3, or close the current pages, saving any changes.



2 Click on the OPEN button in the START window.

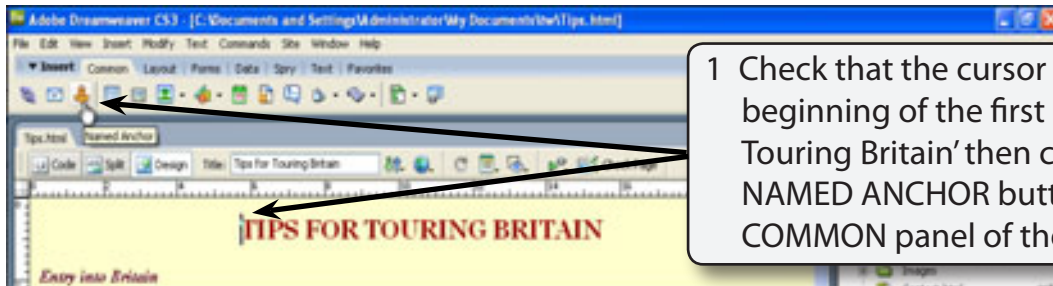


3 Access the DWcs3 SUPPORT FILES, open the CHAPTER 5 folder and open the TIPS.HTML page. It provides tips for touring Britain.

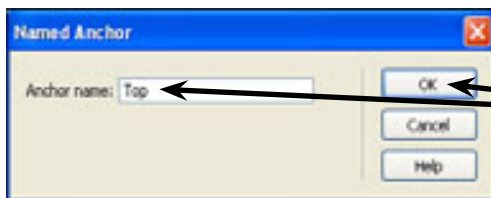
- 4 Use SAVE AS from the FILE menu to save the page in the TRAVELWISE folder under the same name (TIPS.HTML). Select NO if an UPDATE LINKS message appears.

B Setting the Anchor Points

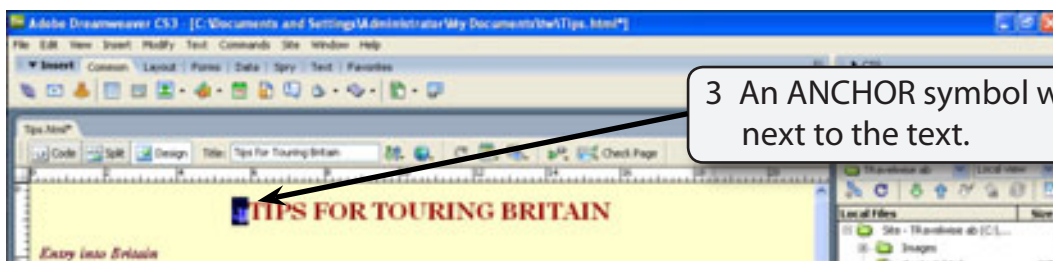
Users need to be able to jump from one section of the page to another. Anchor points need to be placed at significant points to allow this to occur. You need to think carefully where you place these anchors, remembering that not all internet users have the same sized monitors. Spaces can be added to the document to make the sections more clearly defined.



1 Check that the cursor is at the beginning of the first line 'Tips for Touring Britain' then click on the NAMED ANCHOR button in the COMMON panel of the INSERT BAR.

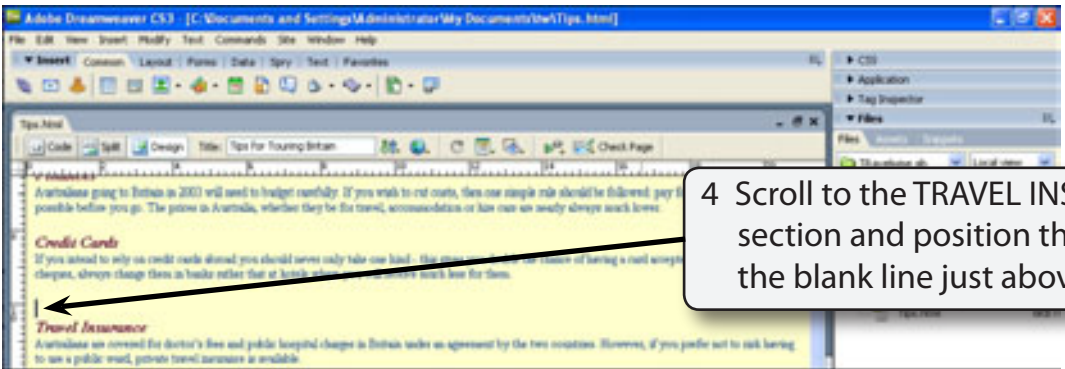


2 In the NAMED ANCHOR dialogue box call the anchor TOP to allow a link to be set back to the top of the page and select OK.



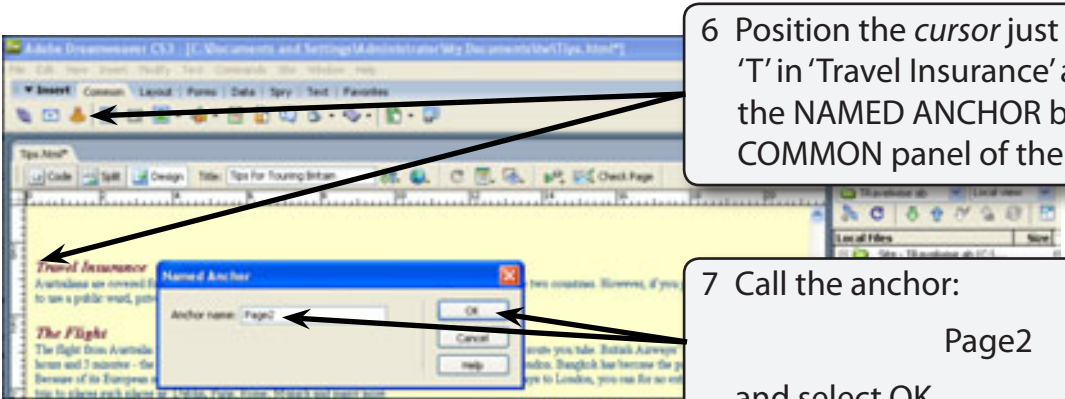
3 An ANCHOR symbol will be added next to the text.

NOTE: The anchor symbol will not be displayed in the browser and it can be turned off using VIEW menu - VISUAL AIDS - INVISIBLE ELEMENTS. However, it is probably better to know where you have set anchor points.



4 Scroll to the TRAVEL INSURANCE section and position the cursor at the blank line just above its heading.

- 5 Press the <enter> or <return> key 10 times to add 10 blank lines. This will significantly separate screen 1 from screen 2.



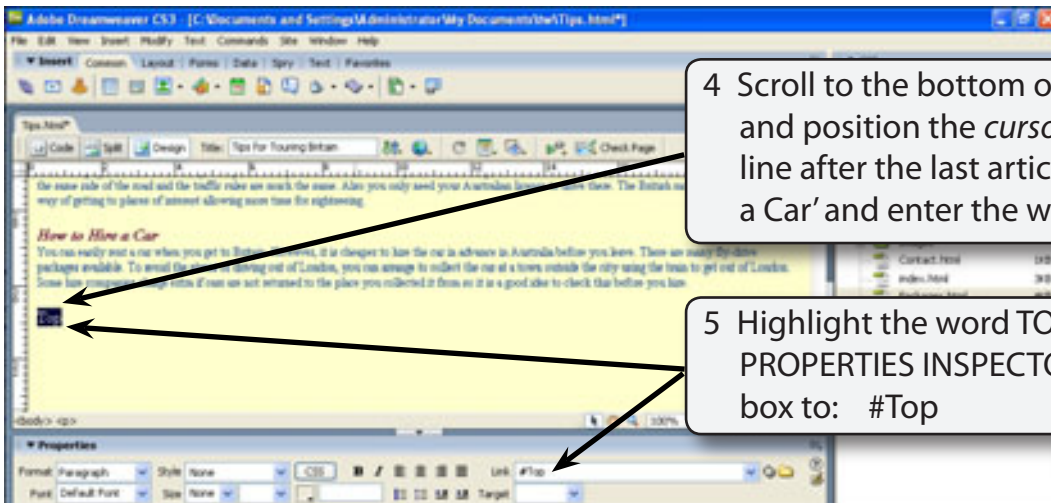
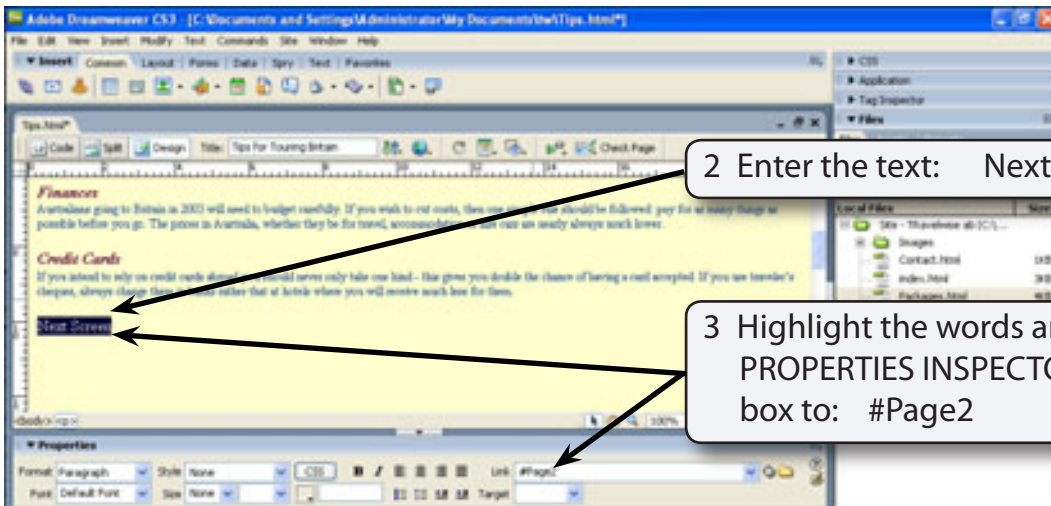
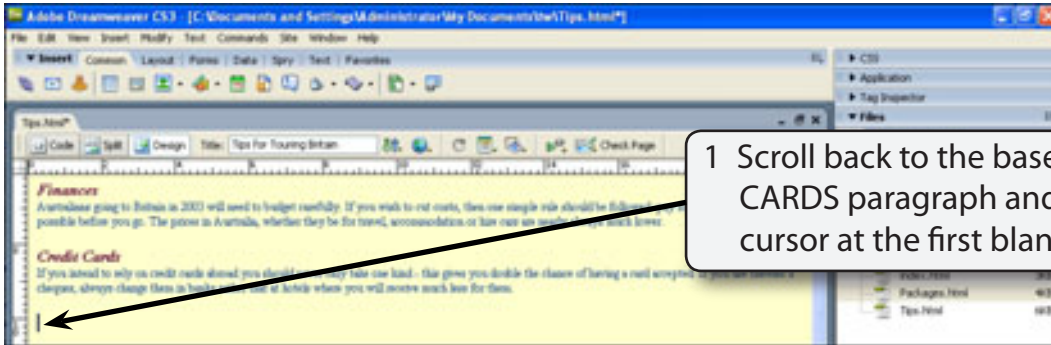
6 Position the *cursor* just before the 'T' in 'Travel Insurance' and click on the NAMED ANCHOR button in the COMMON panel of the INSERT BAR.

7 Call the anchor: Page2 and select OK.

NOTE: The ANCHOR NAME must be one word.

C Setting the Anchor Links

Links can now be provided to the anchor points.



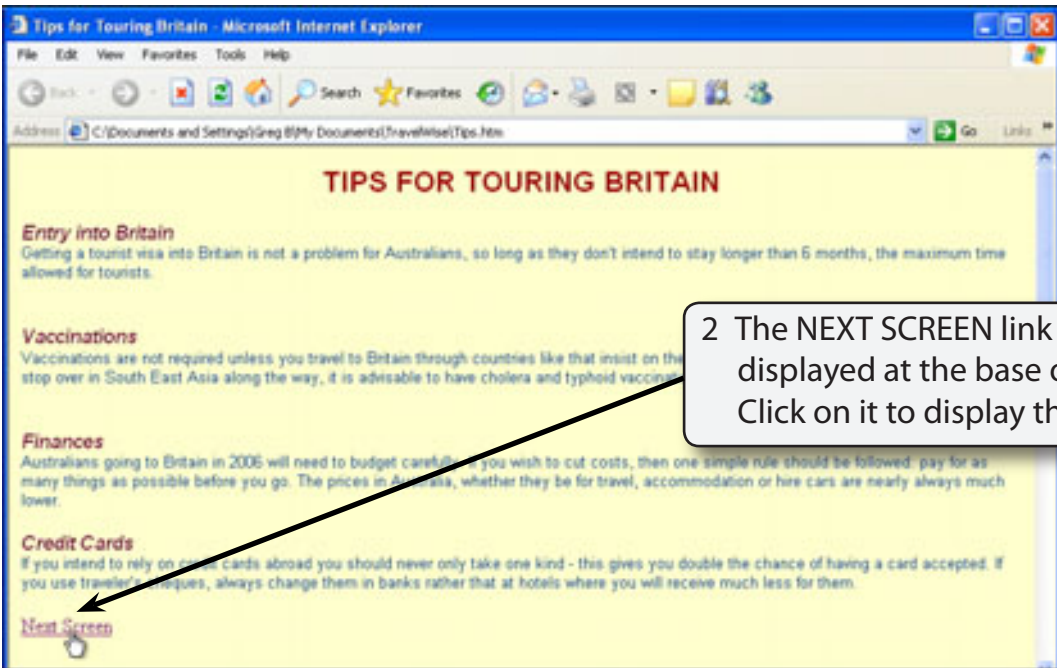


6 Once a link has been set the LINK arrows at the right of the LINK box in the PROPERTIES INSPECTOR allow you to select from any previous links rather than re-entering the link name.

NOTE: Link names are case sensitive. So 'Top' is considered different to 'top'. Be careful to set the link to exactly the same as its anchor point.

D Testing the Anchor Links

- 1 Save the page and preview it in a browser.



2 The NEXT SCREEN link should be displayed at the base of the screen. Click on it to display the next page.