

Adding Content to CSS Pages

Adding content to CSS page layouts is basically the same as adding content to normal pages. With CSS page layouts you need to take care to position the cursor in the required DIV tag.

Let's add a simple company logo, some navigation buttons and some text to the layout you created in the last chapter.

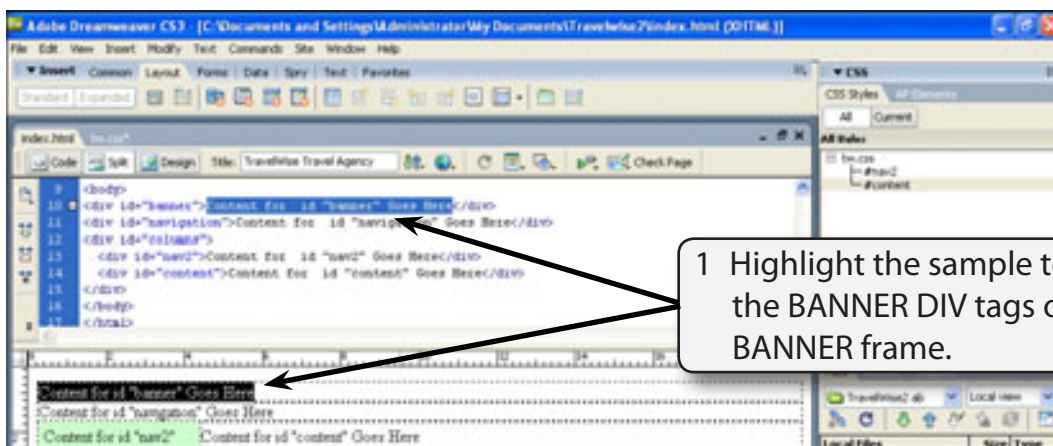
Inserting the Company Logo

The company logo will be placed in the BANNER region. This can be done in the CODE pane or the DESIGN pane.

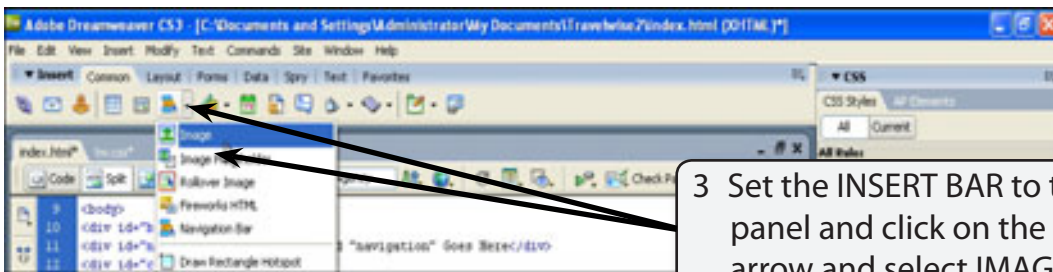
A Opening the Page

- 1 Set the FILES panel to your TRAVELWISE2 site.
- 2 Open the INDEX.HTML page and set the screen to SPLIT VIEW.

B Inserting the Image

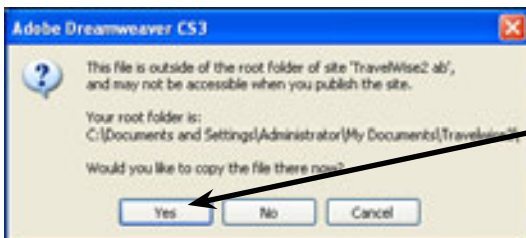
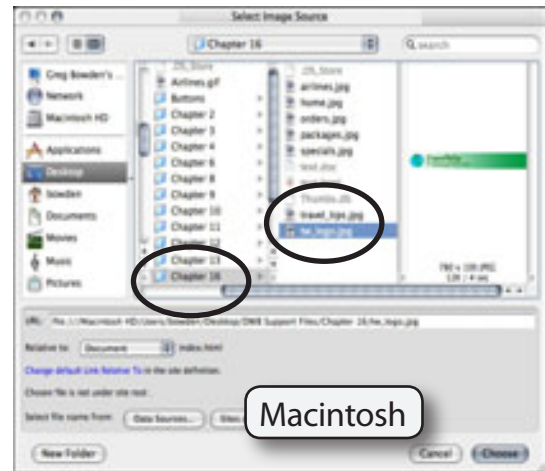
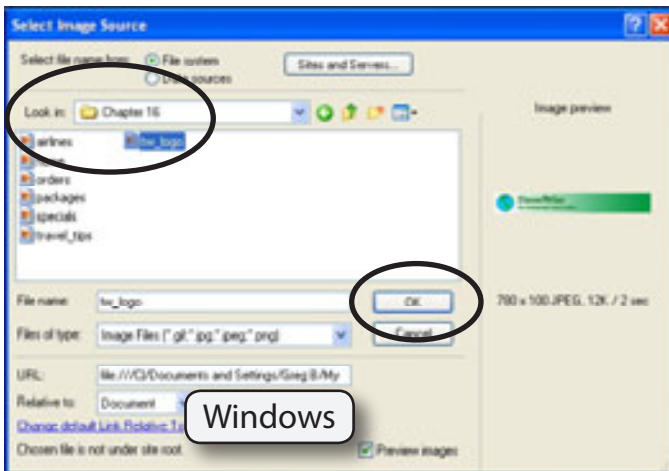


- 2 Press the BACKSPACE or DELETE key to remove the text.



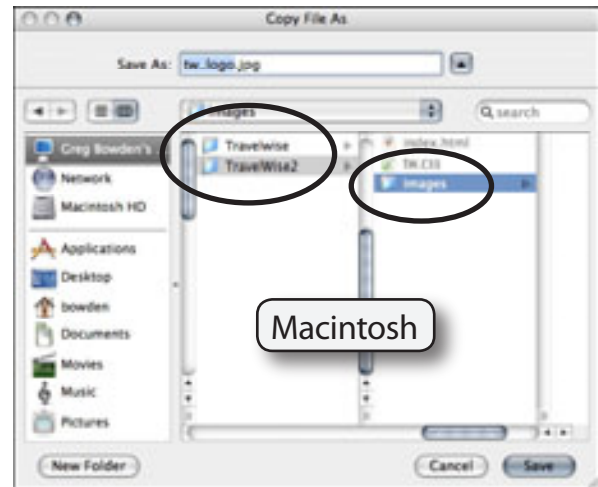
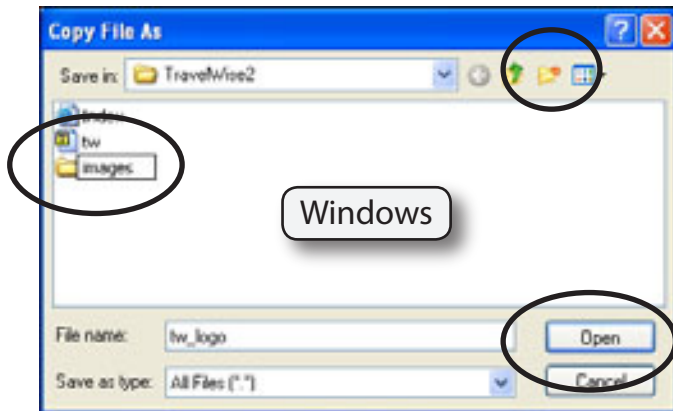
3 Set the INSERT BAR to the COMMON panel and click on the IMAGES button arrow and select IMAGE.

4 Access the DWcs3 SUPPORT FILES, open the CHAPTER 16 folder, select the TW_LOGO.JPG file and select OK or CHOOSE.

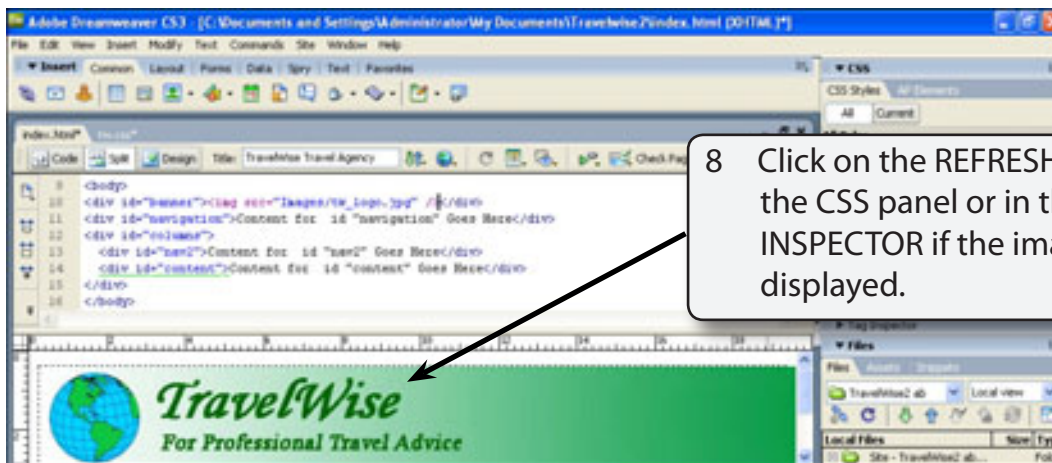


5 Click on YES to the dialogue box telling you that the image is outside the TRAVELWISE2 site.

- 6 Create a NEW FOLDER in the TRAVELWISE2 folder called IMAGES and open the folder.



- 7 Click on SAVE to insert the image.

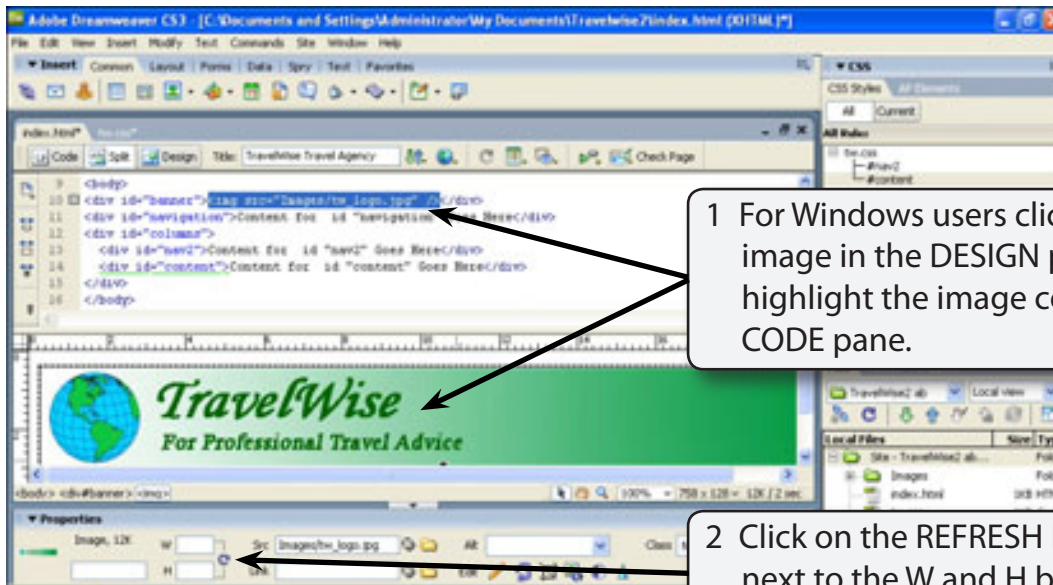


- 8 Click on the REFRESH button in the CSS panel or in the PROPERTIES INSPECTOR if the image is not displayed.

NOTE: The code within the BANNER DIV tags displays the link to the TW_LOGO.JPG image in the IMAGES folder.

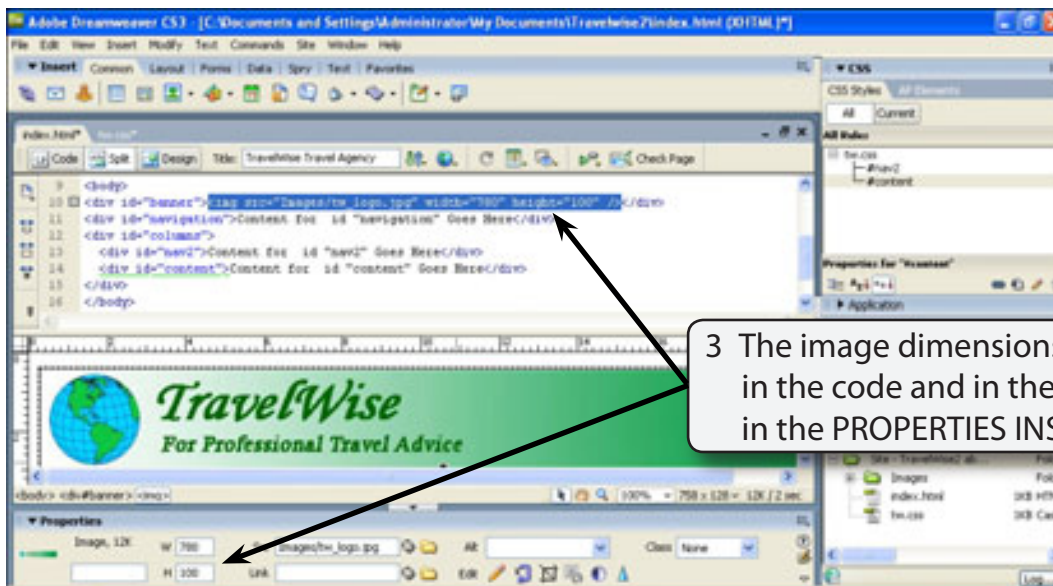
C Inserting the Image Dimensions

The dimensions of the image should be included in the code. If browsers can locate the dimensions in the code they can allocate space on the page for the image. This helps pages to load faster. For Macintosh users the dimensions are automatically inserted.



1 For Windows users click on the image in the DESIGN pane or highlight the image code in the CODE pane.

2 Click on the REFRESH IMAGE icon next to the W and H boxes in the PROPERTIES INSPECTOR.

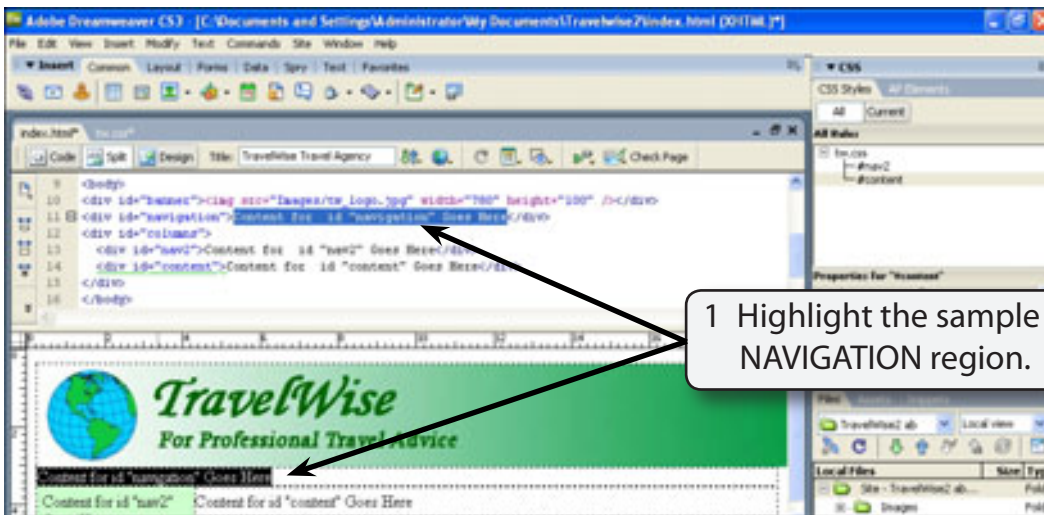


3 The image dimensions are inserted in the code and in the W and H boxes in the PROPERTIES INSPECTOR.

Inserting the Navigation Content

Some simple buttons will be inserted in the NAVIGATION section of the page.

A Inserting the Home Button



- 1 Highlight the sample text in the NAVIGATION region.
- 2 Press the BACKSPACE or DELETE key to remove the text.
- 3 Click on the INSERT IMAGE button in the COMMON panel of the INSERT BAR.
- 4 Access the CHAPTER 16 folder of the DWcs3 SUPPORT FILES and insert the HOME.JPG image.
- 5 Select YES to the Information dialogue box about the image being outside the TRAVELWISE2 site and save the image in the IMAGES folder.

