

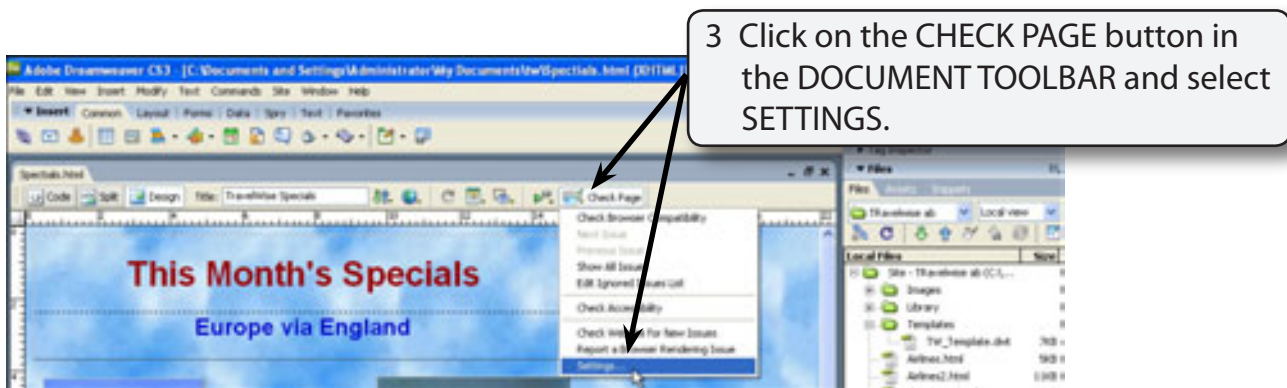
Checking and Uploading Web Files

Now that you have built a web site it is time to publish it on the internet. The process is called UPLOADING. DreamWeaver not only allows you to upload your files to a remote server (Internet Service Provider's hard drive) it also allows you to manage files once they are uploaded, carry out checks on the files before they are uploaded and exclude file types or folders from the uploading process.

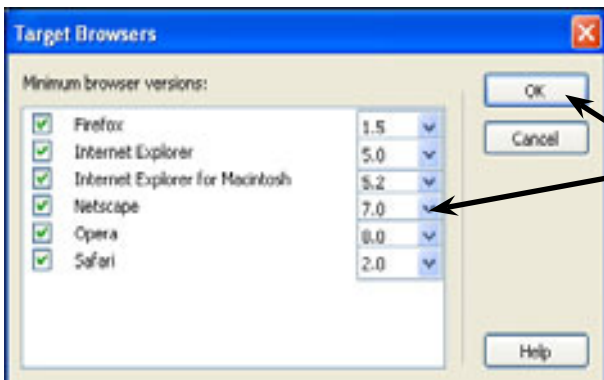
Browser Checks

When you are creating a web site consideration always has to be given to the type of computer and browser that the web site will be viewed on. Usually compromises need to be made. DreamWeaver provides you with information about how your pages will look on different browser versions.

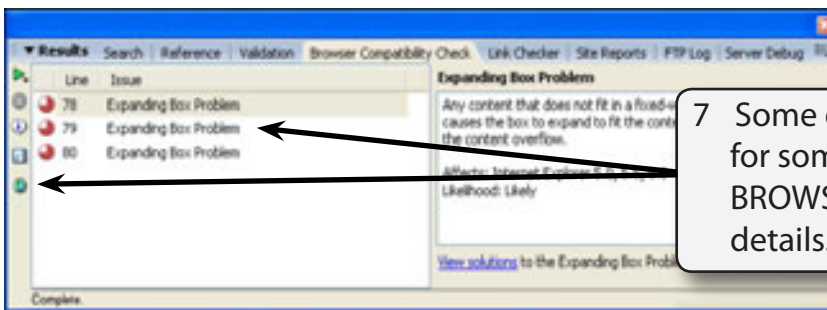
- 1 Load DreamWeaver or close the current page.
- 2 Set the FILES panel to your TRAVELWISE site and open the SPECIALS.HTML page. This page uses layers which are only supported in later browsers.



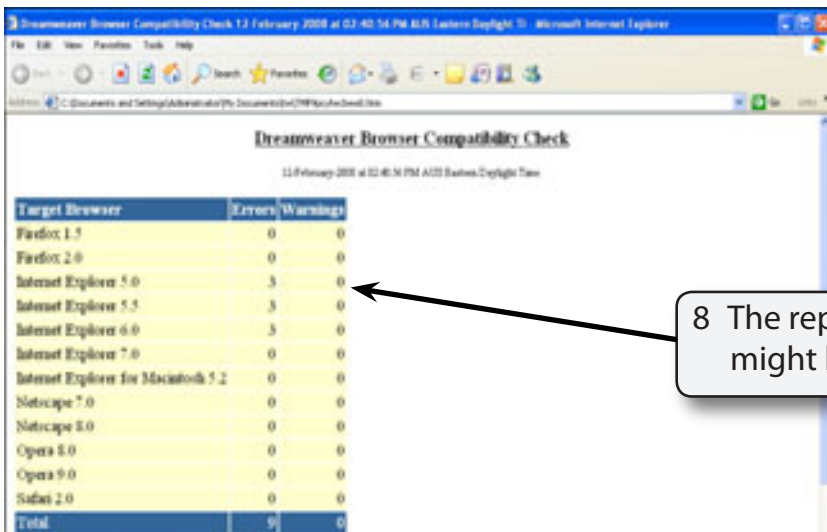
- 4 The TARGET BROWSERS dialogue box is opened and it allows you to select the browser versions that you wish to check for.
- 5 Let's set checks for FIREFOX 1.5, INTERNET EXPLORER 5.0, INTERNET EXPLORER FOR MACINTOSH 5.2, NETSCAPE NAVIGATOR 5.0, OPERA 8.0 and SAFARI 2.0.



6 The settings are changed by clicking on the version number and selecting a version number from the popup list, then select OK.



7 Some errors should be flagged for some browsers. Click on the BROWSER REPORT button for more details.



8 The report highlights which browsers might have problems with the page

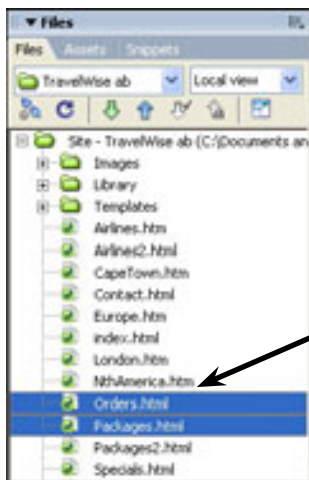
9 Close the browser to return to DreamWeaver and close or collapse the RESULTS panel.

NOTE: A large number of changes have been made to the structure of the site during the chapters so more errors than normal will be found.

Other Reports

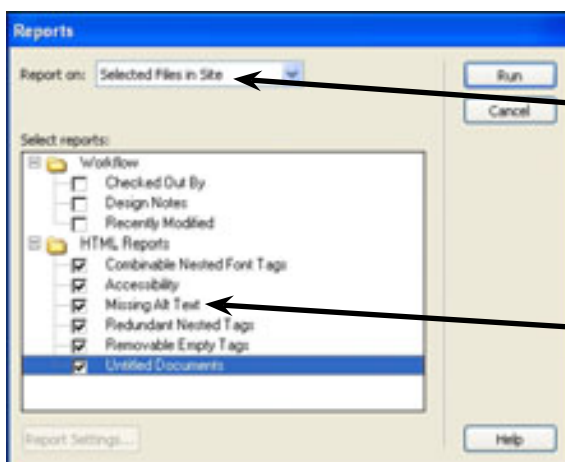
DreamWeaver will carry out a series of checks on files and links before they are uploaded. This helps you ensure that your site operates as efficiently as possible. The REPORT command from the SITE menu is used to do this. You can run a report on one document, selected documents or the entire site.

- 1 Let's run a report on two pages of the site.



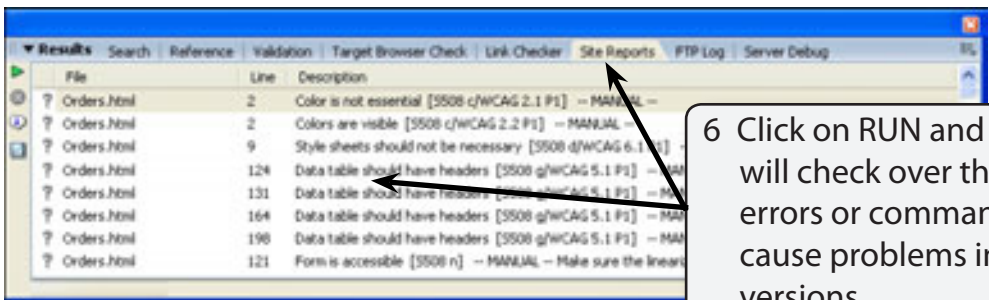
- 2 In the FILES panel SHIFT+CLICK on the ORDERS.HTML and PACKAGES.HTML pages.

- 3 Display the SITE menu, select REPORTS and the REPORTS dialogue box should be opened.



- 4 Set the REPORT ON box at the top of the dialogue box to SELECTED FILES IN SITE so that the checks are carried out on just the two highlighted files.

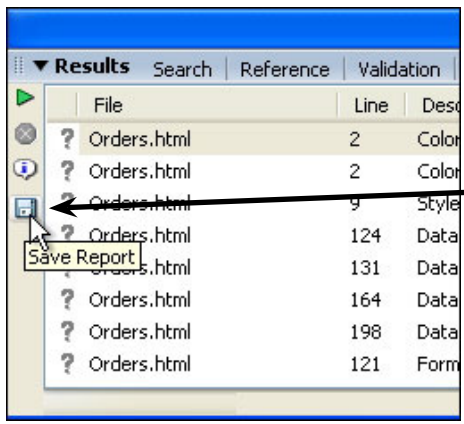
- 5 Select all the options under the HTML REPORTS section.



6 Click on RUN and DreamWeaver will check over the two files for errors or commands that might cause problems in certain browser versions.

- 7 The RESULTS panel will probably show a large number of errors because we have made a significant number of changes to pages. The program tells you the line of code that is suspect and it is good practice to check it, particular those errors marked with a red X.

NOTE: You can also report on just the current document or the whole site.

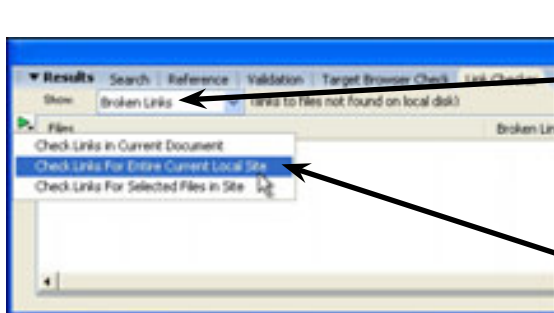


8 You can save the report using the SAVE REPORT button at the left of the dialogue box. This allows you to look at each error in turn over a period of time.

The Link Checker

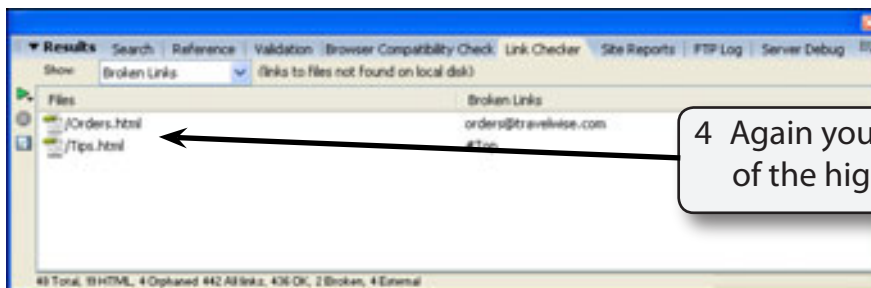
It is important to check that all links work correctly in a web site. The LINK CHECKER section of the RESULTS panel can assist with this.

- 1 Click on the LINK CHECKER tab of the RESULTS panel.



The screenshot shows the 'Results' panel with the 'Link Checker' tab selected. A dropdown menu is open, showing three options: 'Check Links in Current Document', 'Check Links For Entire Current Local Site', and 'Check Links For Selected Files in Site'. A green arrow points to the 'Check Links For Entire Current Local Site' option. Another arrow points to the 'Broken Links' dropdown menu.

- 2 Leave the SHOW box as BROKEN LINKS. These are links that flow to pages that are not in your site's folder.
- 3 Set the CHECK LINKS button (green arrow) at the top left of the panel to CHECK LINKS FOR ENTIRE CURRENT LOCAL SITE.



The screenshot shows the 'Results' panel with the 'Broken Links' dropdown menu selected. The panel displays a list of broken links, including 'orders@travelwise.com' and '#Top'. A green arrow points to the 'Broken Links' dropdown menu. Another arrow points to the list of broken links.

- 4 Again you would need to check any of the highlighted link problems.

- 5 Close the RESULTS panel using CLOSE PANEL GROUP from its OPTIONS MENU (or its CLOSE box if it is a floating panel) and return the screen to DESIGN MODE.

Cloaking

Cloaking is the process of excluding files from uploading to a remote server (Internet Service Provider's hard drive). It allows you to keep files and folders in your local site's folder that are not needed on the remote server. An example of this might be Flash animations. Original Flash files are stored as .FLA files. When they need to be imported into DreamWeaver they are compressed into a .SWF (ShockWave File) file. You could keep the original Flash file in your site's folder so that the animation can easily be altered when required, but cloak the file so that it is not transferred to the remote server.

You can only cloak file types or folders, not individual files.