

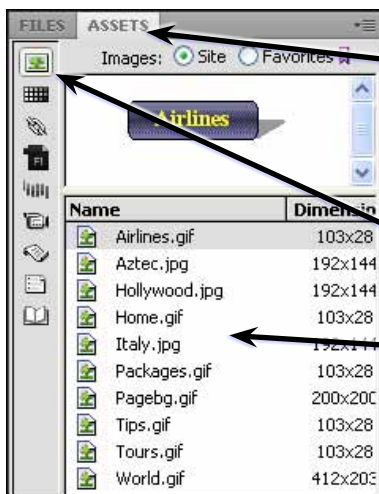
Site Assets and Library Items

One of the many advantages of maintaining a site in DreamWeaver is that all the required graphics, colours, backgrounds, buttons, etc. can be used from the SITE folder at any time. These items are called the site's ASSETS. DreamWeaver allows you to separate the assets into groups to make them easier to use.

The Assets Panel

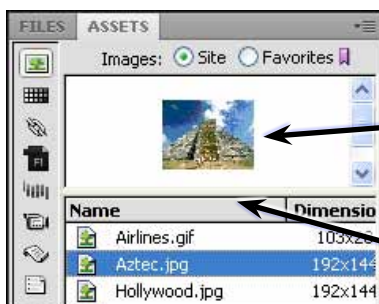
Items stored in your site folder can be displayed using the ASSETS panel.

- 1 Load DreamWeaver CS5 or close the current files.
- 2 Set the FILES panel to your TRAVELWISE site, set the screen to DESIGNER view and open the INDEX.HTML page.



3 In the PANEL GROUP click on the ASSETS tab to display the ASSETS panel.

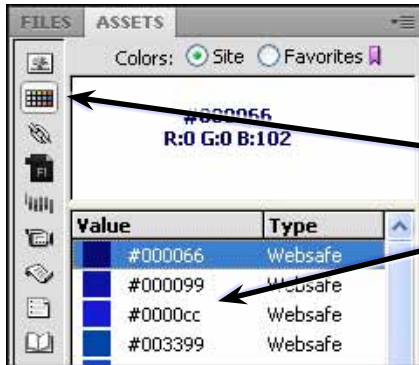
4 The IMAGES button (top button on the left) should be selected. If it isn't, click on it. The IMAGES section displays all the images used in the site, regardless of which folder they are saved in.



5 Click on a few of the IMAGES in turn and the image is displayed at the top of the ASSETS panel.

6 If the image is not displayed clearly at the top of the ASSETS panel, drag the bar above the NAME heading down so that there is room in the panel to display the image.

- 7 The buttons at the left of the ASSETS panel separate the site into the different types of resources.



8 Click on the next button down (the COLOURS button) and all the different colours used in the site will be displayed.

NOTE: The TYPE column indicates whether the colour is one of the 216 web safe colours that will display accurately on any browser or any computer platform.

- 9 The other buttons will display any URL links to other pages, Flash animations (SWF), any Shockwave effects, movies, scripts, templates or library items. Some of these will be used in later chapters.

Using the Assets Panel

The ASSETS panel will now be used to create another page about airline details. We can ensure that the text colours used are the same as those used on other pages as well as inserting images where needed. The page has been prepared for you.

A Loading the Prepared Page

- 1 Display the FILE menu and select OPEN.
- 2 Access the DWcs5 SUPPORT FILES and open the CHAPTER 6 folder.
- 3 Open the AIRLINES.HTML file.

- 4 Use SAVE AS from the FILE menu to save the page in your TRAVELWISE folder as:

Airlines (Windows system)
Airlines.html (Macintosh system)

There is no need to UPDATE LINKS.

- 5 Close the original AIRLINES.HTML file (the left tab).

B Applying Assets

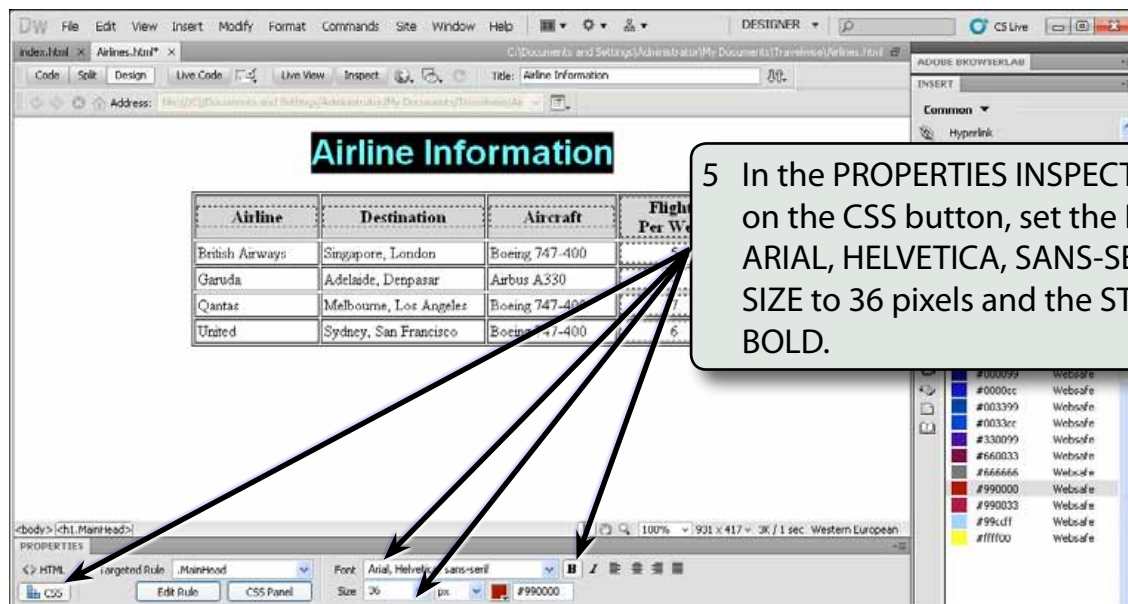
1 Highlight the heading AIRLINE INFORMATION.

| Airline | Destination | Aircraft | Flights Per Week |
|-----------------|------------------------|----------------|------------------|
| British Airways | Singapore, London | Boeing 747-400 | 5 |
| Garuda | Adelaide, Denpasar | Airbus A330 | 4 |
| Qantas | Melbourne, Los Angeles | Boeing 747-400 | 7 |
| United | Sydney, San Francisco | Boeing 747-400 | 6 |

2 Click on the COLOURS button in the ASSETS panel and click on the #990000 red colour.

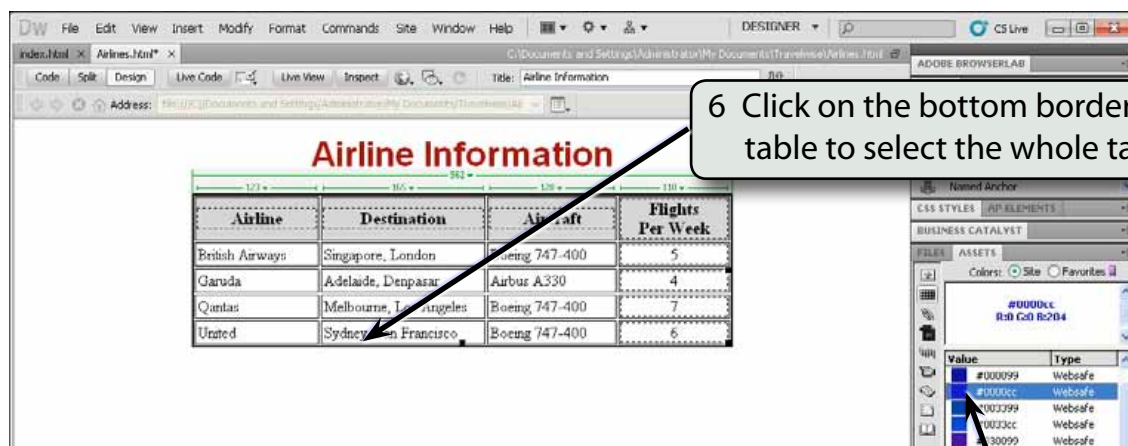
- 3 Click on the APPLY button at the base of the ASSETS panel and you will be asked to save a CSS rule.

4 The SELECTOR TYPE box should be set to CLASS, set the SELECTOR NAME box to MAINHEAD and select OK.



NOTE:

- i Using the ASSETS panel has ensured that the heading on this page is the same shade of red as the headings on the other pages.
- ii You can open previous pages, click on text you have set to a colour and check that colour in the PROPERTIES INSPECTOR. You can also open each page in the site and apply the same colour from the ASSETS panel to each heading.



7 Click on one of the dark blue colours in the ASSETS panel.