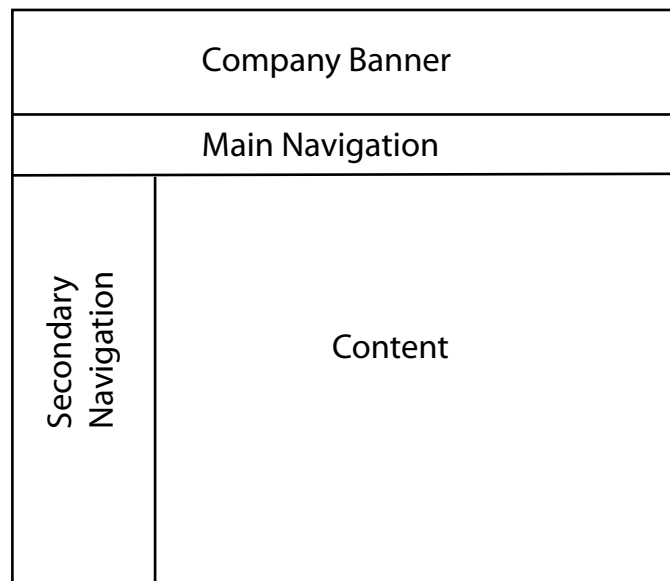


Laying out a CSS Based Page

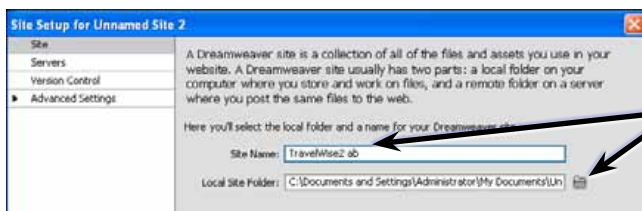
The best way to learn how use CSS styles to layout pages is to create a new site. The page layout will be created in this chapter, the content added to it in the next chapter and the layout formatting applied in Chapter 16.

The pages will have the following structure:



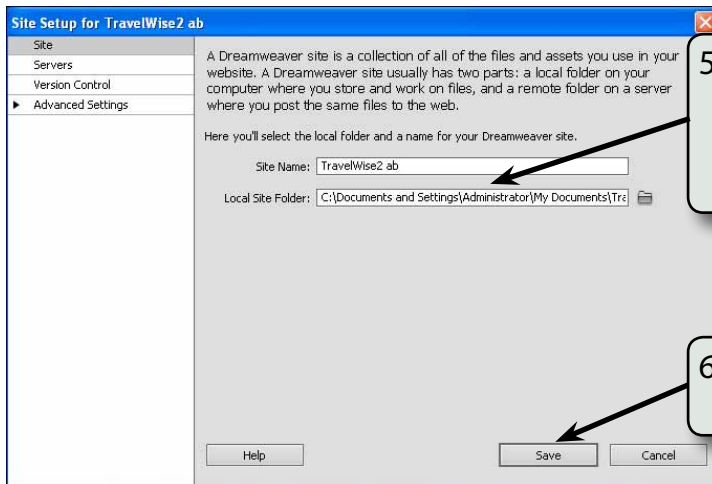
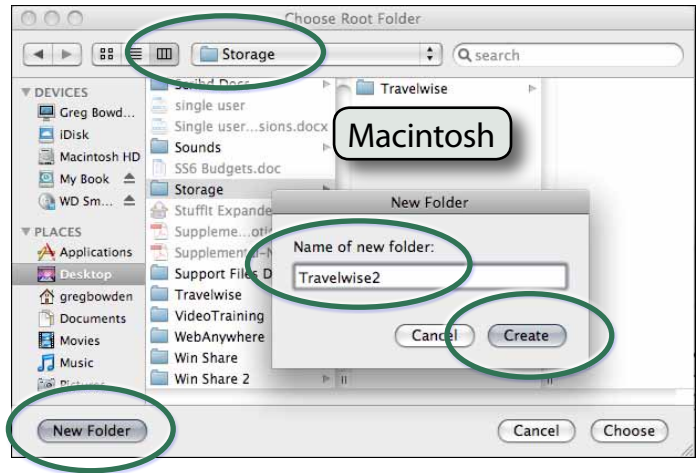
Starting a New Site

- 1 Load DreamWeaver or close the current documents.
- 2 Display the SITE menu and select NEW SITE.



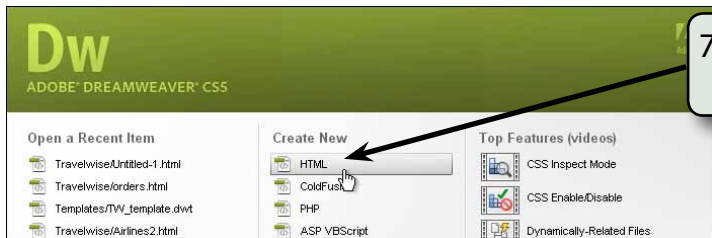
- 3 In the SITE NAME box enter:
TravelWise2 <your initials>
then click on FOLDER icon next to the
LOCAL SITE FOLDER box.

- 4 Access your STORAGE folder and create a new folder called TRAVELWISE2, referring to the following diagrams.



5 Select OPEN or CHOOSE followed by SELECT (Windows) and the path to the folder should be added to the LOCAL SITE FOLDER box.

6 Click on the SAVE button to save the site details.

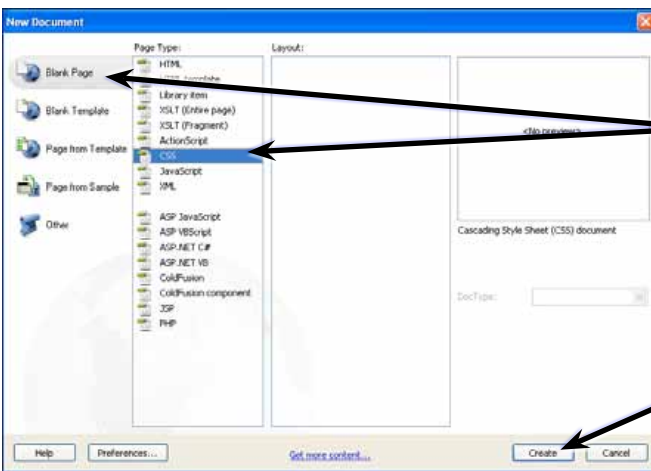


7 Start a new HTML page if you do not have a blank page on the screen.

Saving the Pages

Two pages need to be saved. The blank HTML page and the external CSS page that will be used to store all the formatting and layout information.

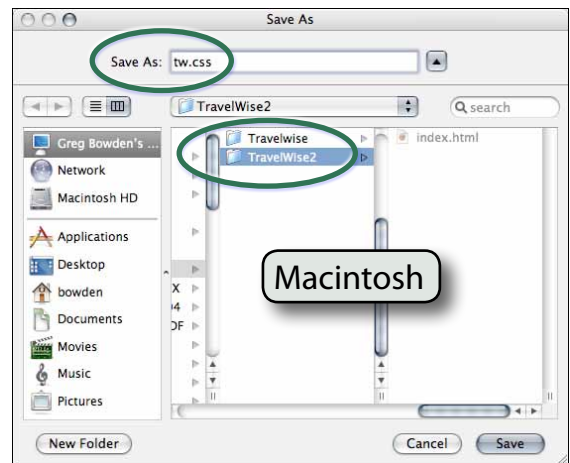
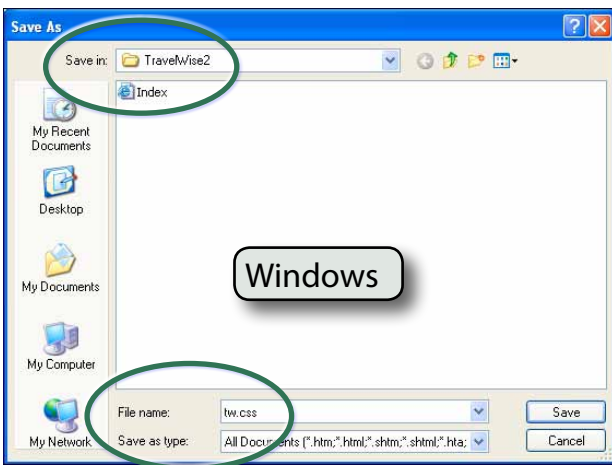
- 1 Save the current untitled page in the TRAVELWISE2 folder as:
index or index.html
- 2 Display the FILE menu and select NEW to create a new page.



3 In the left column select BLANK PAGE then select CSS in the PAGE TYPE column.

4 Select CREATE to start the file.

- 5 Save the page in your TRAVELWISE2 folder as:
tw.css
referring to the following diagrams.

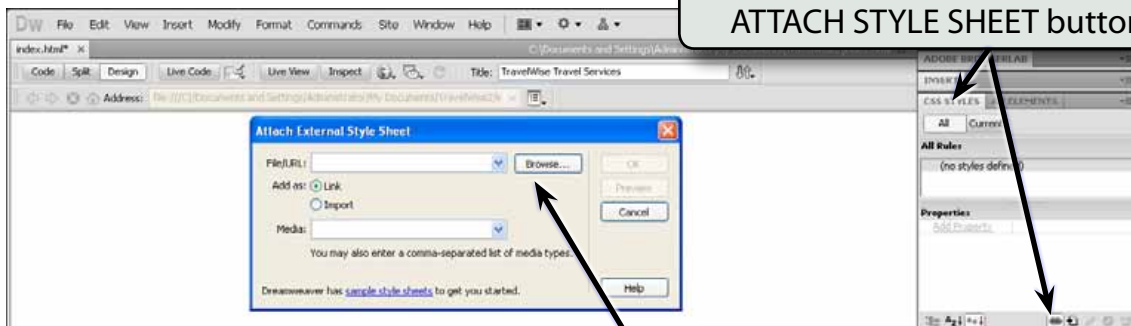


Attaching the CSS File to the Index Page

The CSS file now needs to be linked to the INDEX page so that all the formatting and layout details will be sent to the CSS file.

- 1 Close the TW.CSS tab. The file does not need to be open to store data. DreamWeaver will write the code to that file for you.
- 2 The INDEX page should be open.

3 Expand the CSS STYLES panel in the PANEL GROUP and click on the ATTACH STYLE SHEET button.



4 In the ATTACH EXTERNAL STYLE SHEET dialogue box click on the BROWSE button next to the FILE/URL box.

- 5 Locate the TW.CSS file in your TRAVELWISE2 folder and select OK or CHOOSE, referring to the following diagrams.

