

# Creating Links

---

Now that you have created a few TravelWise pages they need to be combined so that a user can easily jump from one page to another. The process is called LINKING and when you use HTML (HyperText Markup Language) to create a link that link is called a HYPERLINK. You can hyperlink text or graphics.

As you have probably seen from using web pages there are a large number of different ways of navigating around web pages using the links that have been created. In this chapter you will create links to different pages using text and graphics.

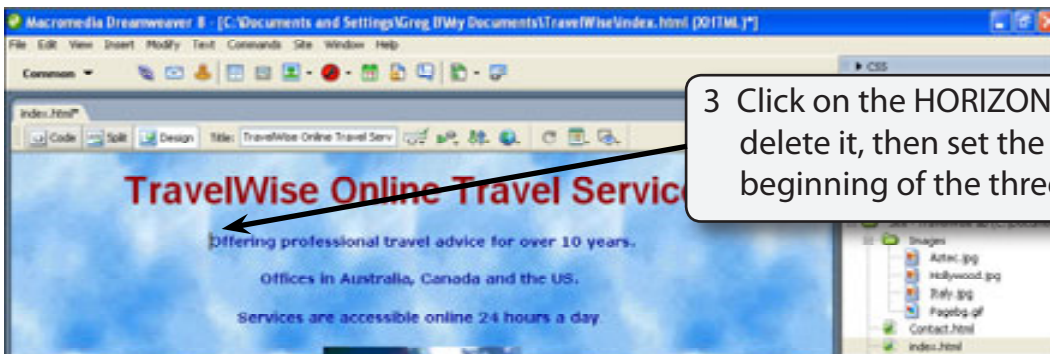
## Linking Text

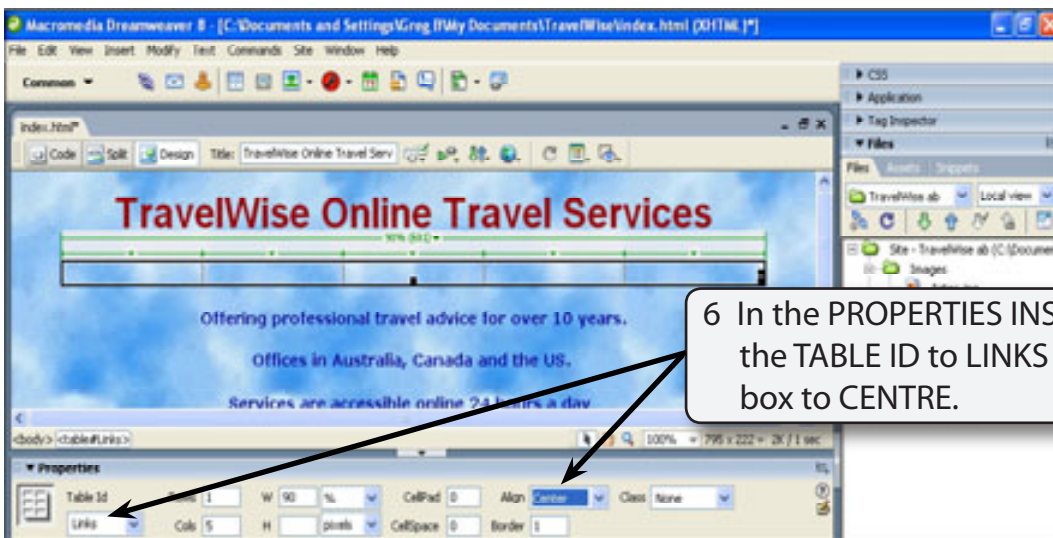
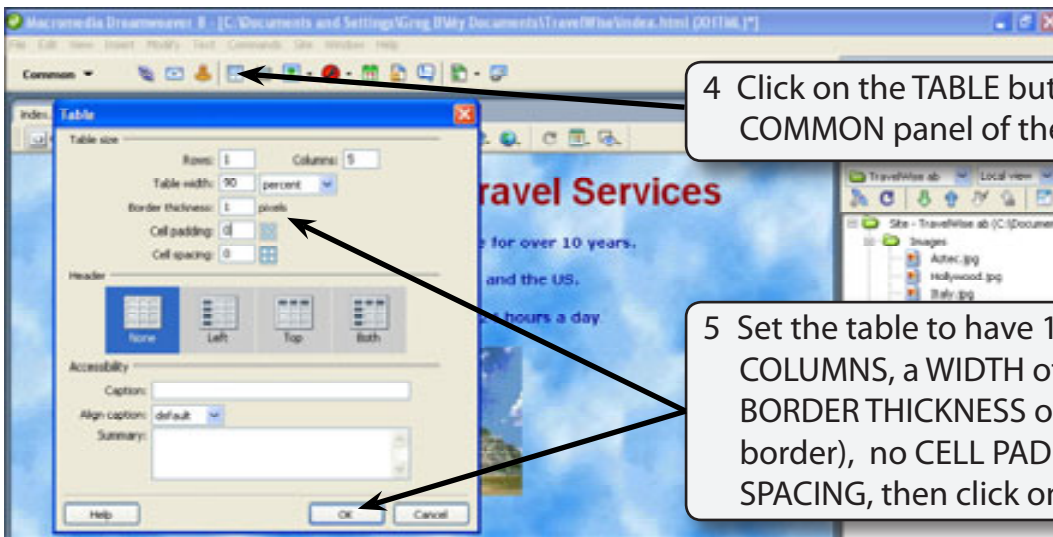
Text hyperlinks will be created so that your INDEX page can open the PACKAGES and CONTACT US pages. The links will be placed in a table so they can be neatly displayed at the top of the screen.

### A Creating the Link Table

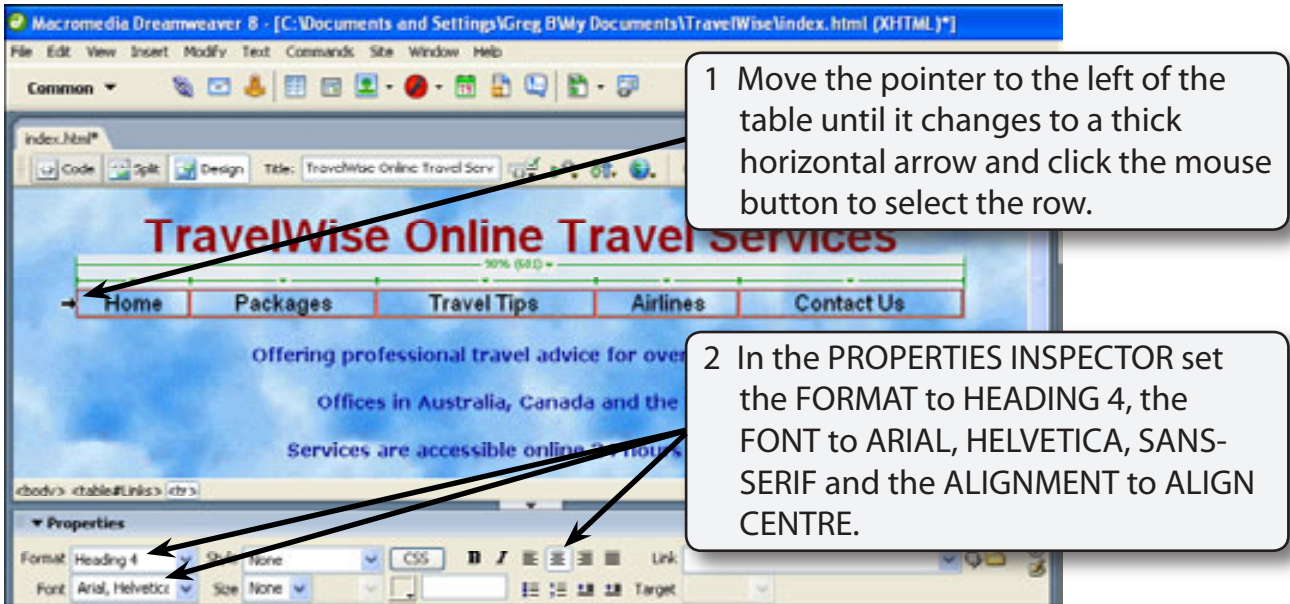
A table will be inserted where the horizontal rule currently is.

- 1 Load DreamWeaver 8 or close the current page.
- 2 Check that the FILES panel is set to your TRAVELWISE site then double click on the INDEX.HTML page to open that page.





## B Formatting the Table

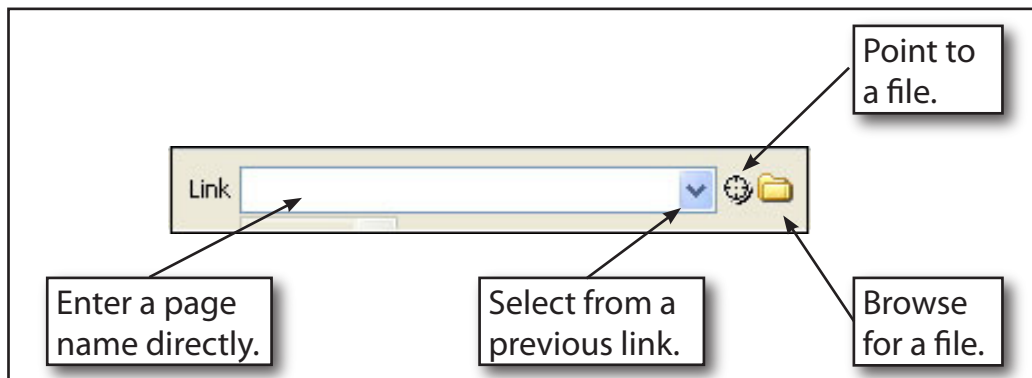


## C Creating the Hyperlinks

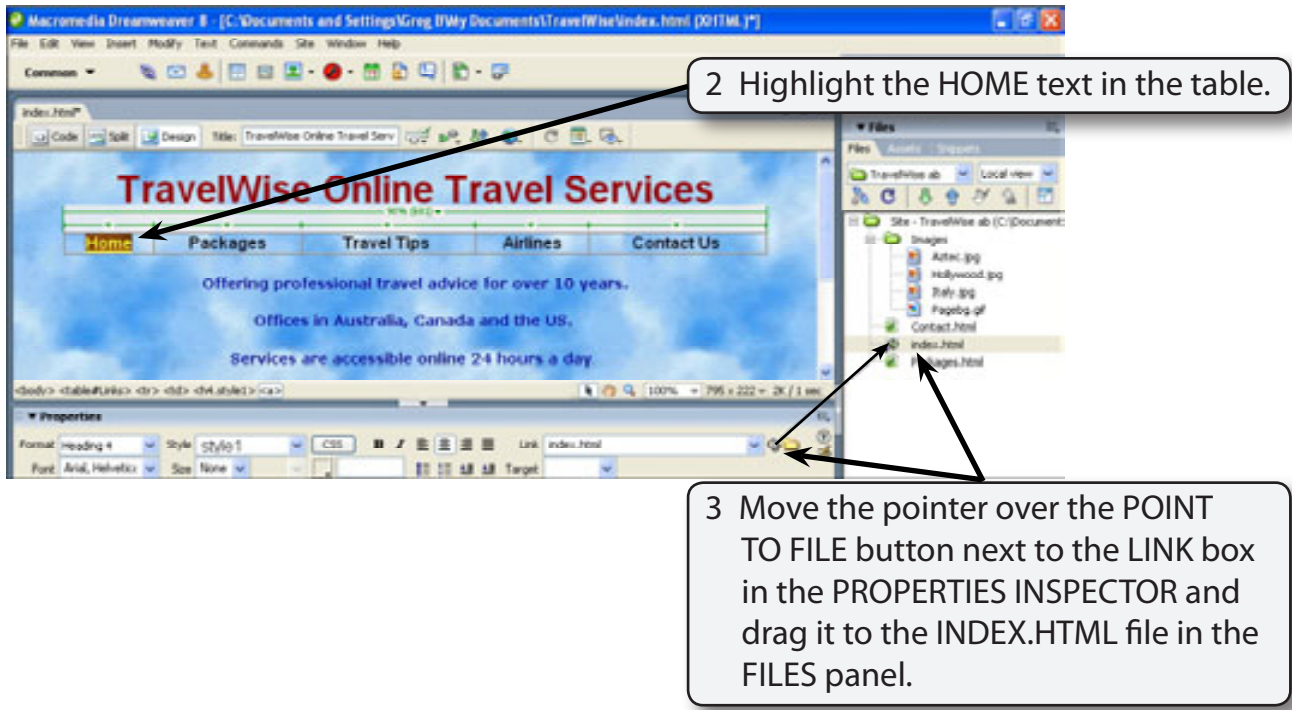
There are a number of ways to create hyperlinks to other pages. You can:

- enter the page name in the LINK box of the PROPERTIES INSPECTOR.
- select from a previously used link.
- use the BROWSE FOR FILE folder to locate the page.
- drag the POINT TO FILE icon to the required file in the FILES panel.

The last one is probably the easiest one to use. The following diagram describes the four link sections in the PROPERTIES INSPECTOR.



- 1 The HOME text will be set to link to itself (INDEX.HTML) so that when the table is copied to other pages the link will take the user back to the index (or home) page.



**NOTE:** Notice that the LINK box now displays the link INDEX.HTML

