

# Inserting Flash Media

DreamWeaver allows you to directly import media created in Flash and you can even create Flash Text and Flash Buttons within DreamWeaver. Flash is a graphics program that was developed to allow the creation of web elements, particularly animations. They are played through Flash Player which is now built into all browsers and operating systems so most items created using Flash media should display accurately on recent computers.

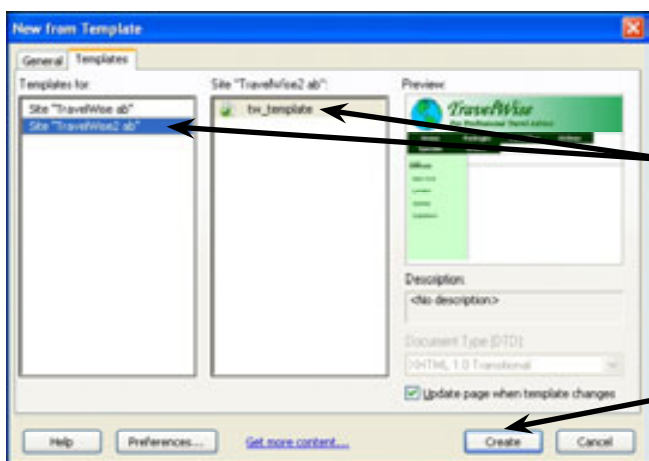
There are 4 main types of Flash media:

- **Flash Text** which allows you to create elaborate headings from within DreamWeaver.
- **Flash Animations** which are animations drawn in Flash and imported into DreamWeaver.
- **Flash Buttons** which are buttons created within DreamWeaver. They allow you to add text directly to the button.
- **Flash Video** which is video that has been saved in Flash and can be imported directly into DreamWeaver. The advantage of Flash Video over other formats is that it is compressed to small file sizes.

## Creating a Page

A simple page based on the TravelWise2 template will be created for the London office of TravelWise. The different types of Flash media will be inserted on the page.

- 1 Load DreamWeaver or close the current file and set the FILES panel to your TRAVELWISE2 site.
- 2 Display the FILE menu and select NEW.



3 Select the TEMPLATES tab, select the TRAVELWISE2 site and click on the TW\_TEMPLATE file.

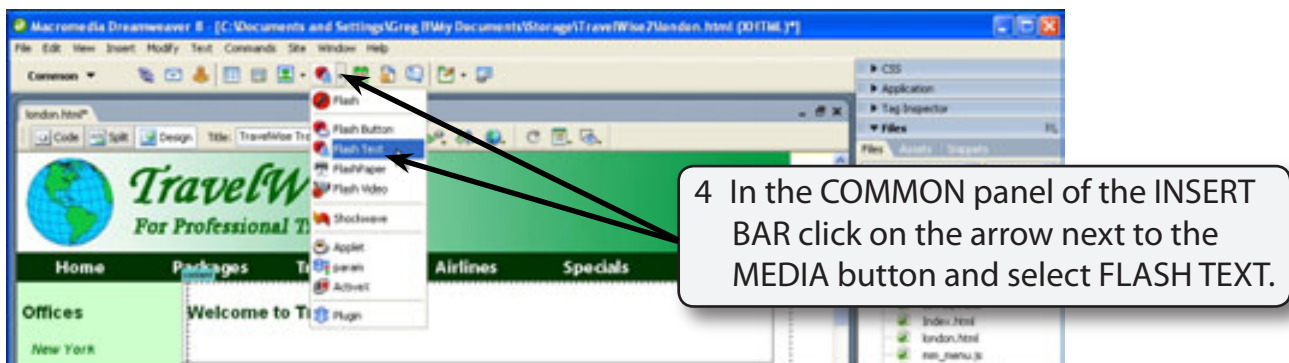
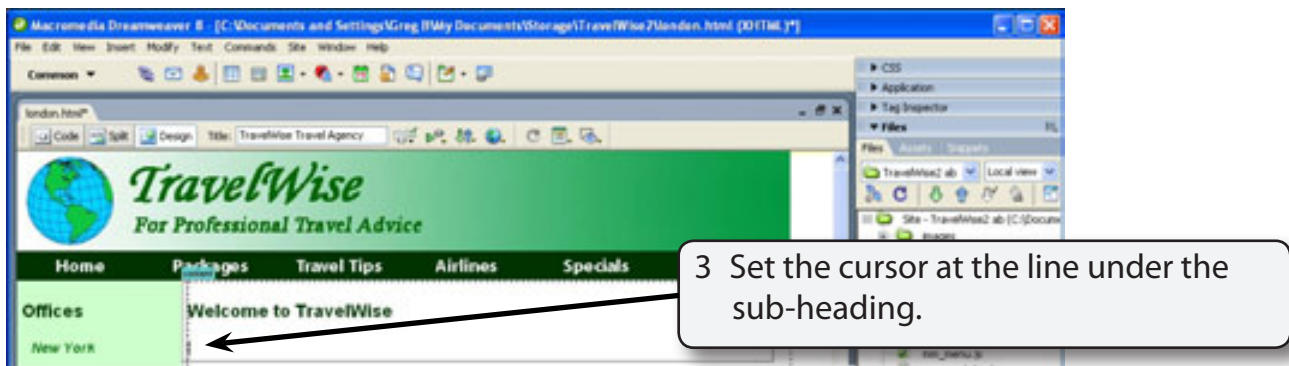
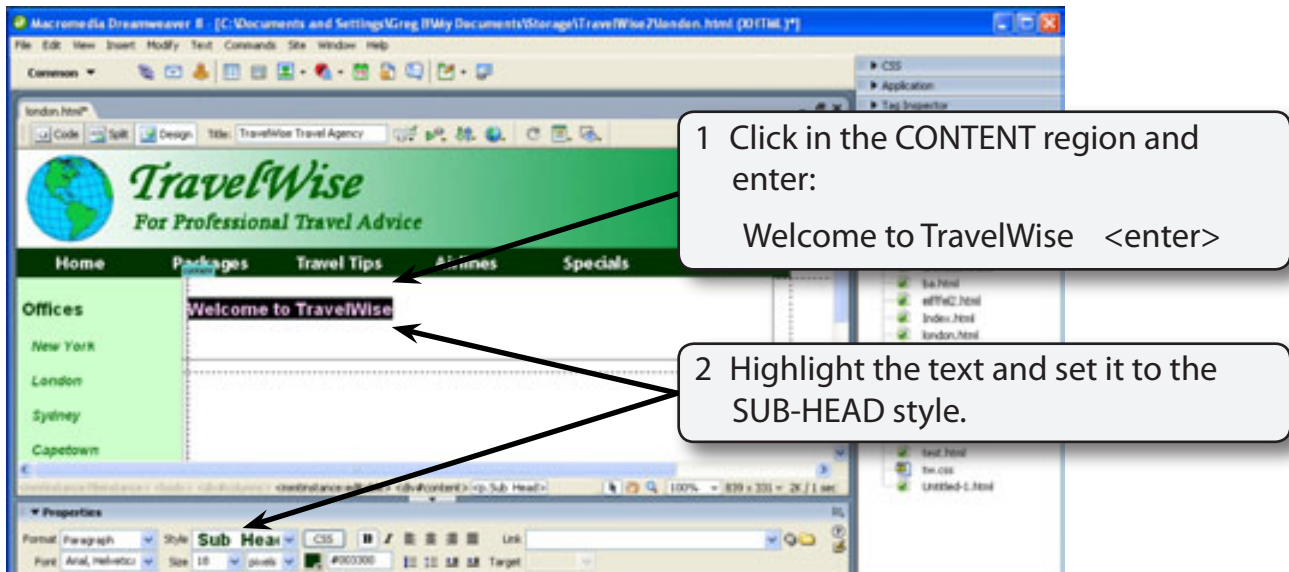
4 Click on CREATE to start the page and save it as:

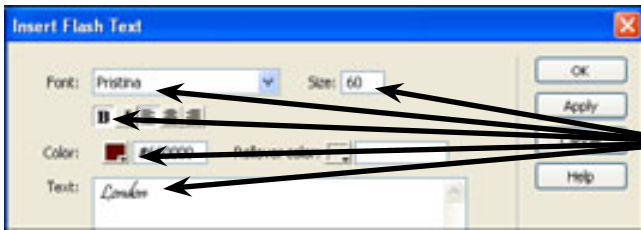
london or london.html

## Flash Text

DreamWeaver has Flash Text built in to it so that you can create headings using a variety of fonts. To see how Flash Text works a heading for the London page will be inserted.

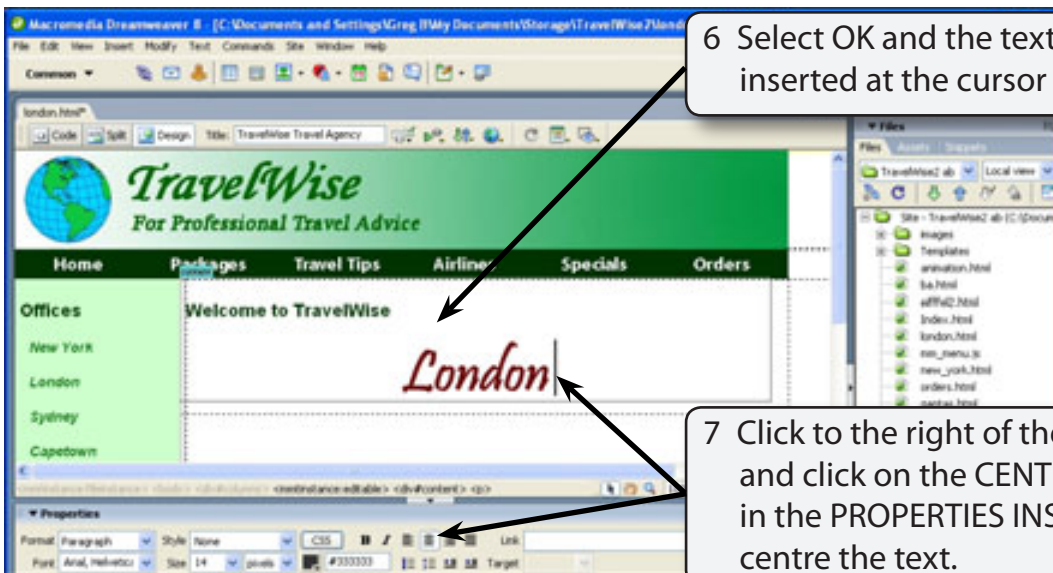
### A Inserting Flash Text





5 In the TEXT frame enter:  
 London  
 then select a FONT, set the SIZE to 60, the STYLE to BOLD and the COLOUR to DARK RED.

**NOTE:** You can set a ROLLOVER COLOUR if you wish. The ROLLOVER colour will be displayed when the mouse moves over the text in a browser. It is more often used when you wish to use FLASH TEXT for linked text.

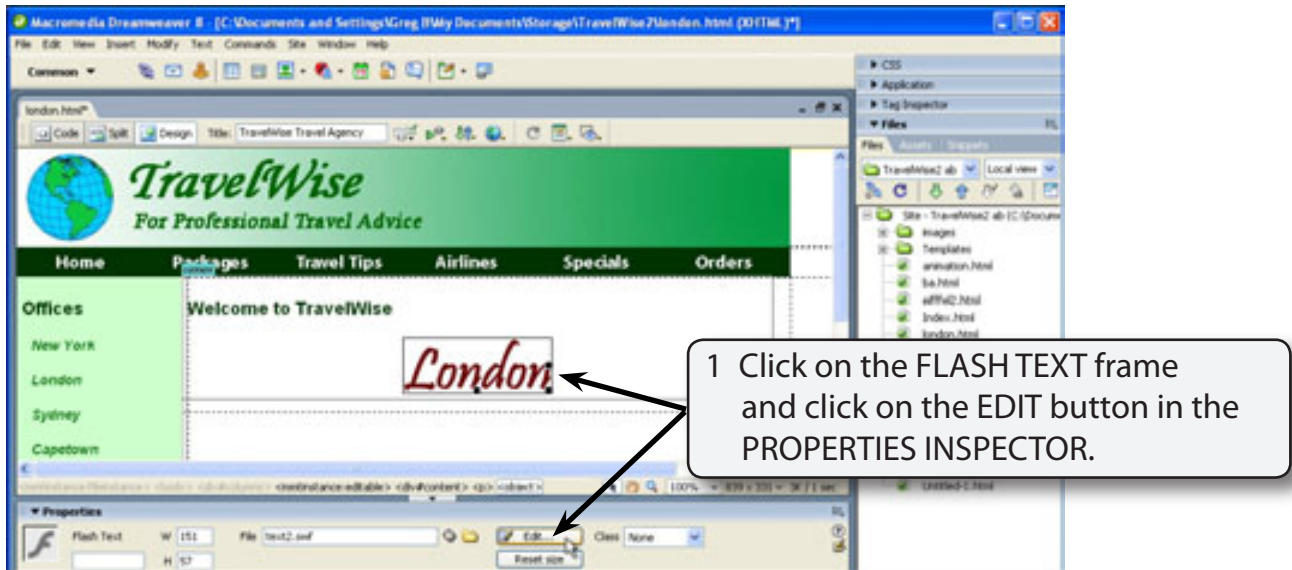


6 Select OK and the text will be inserted at the cursor position.

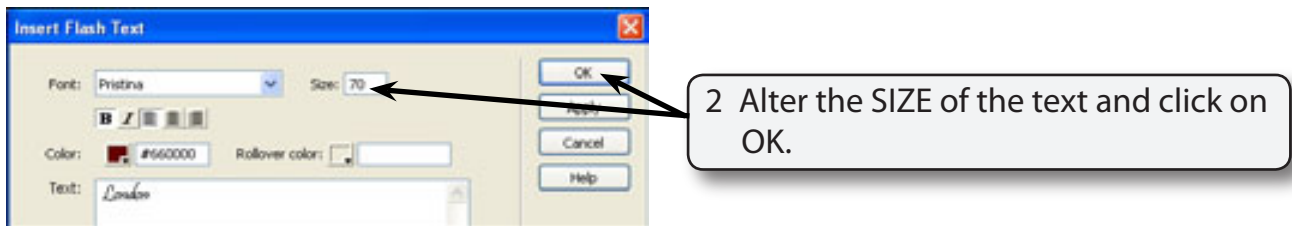
7 Click to the right of the Flash Text and click on the CENTRE button in the PROPERTIES INSPECTOR to centre the text.

## B Editing Flash Text

You can edit Flash Text once it has been inserted.



**NOTE:** You can also double click on the Flash Text to edit it.



**NOTE:** If you use a coloured background in your web site, the BG box in the PROPERTIES INSPECTOR or INSERT FLASH TEXT dialogue box can be used to set the Flash Text shading to the same colour.

3 You might like to experiment with different fonts and sizes of the Flash Text. You can also set links on Flash Text.