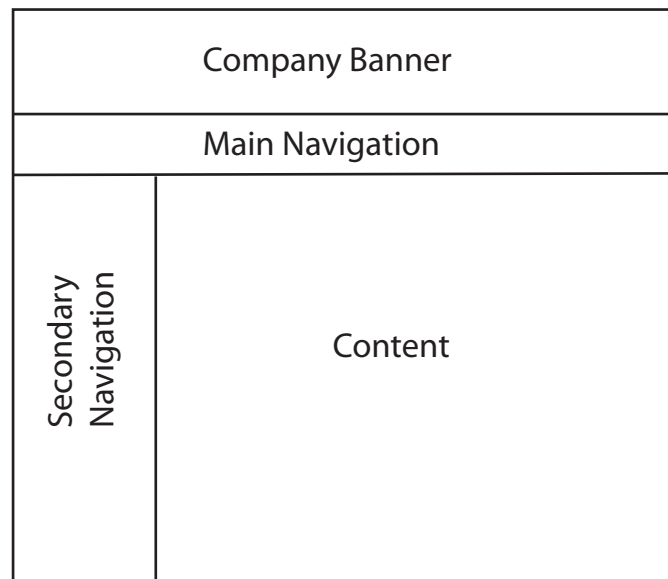


Laying out a CSS Based Page

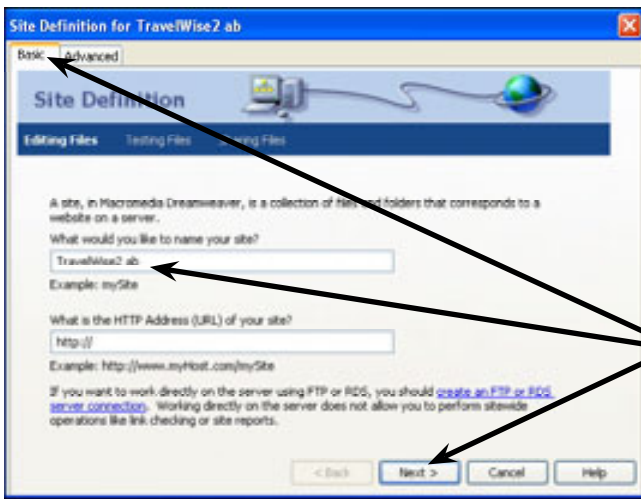
Laying out a page using CSS takes a bit more effort than using tables, but the result is a page that is more efficient, quicker to load and looks the same on any browser.

To make the process easier a new site will be created. The pages will have the following structure, without a table being used.



Starting a New Site

- 1 Load DreamWeaver or close the current documents.
- 2 Display the SITE menu and select NEW SITE.



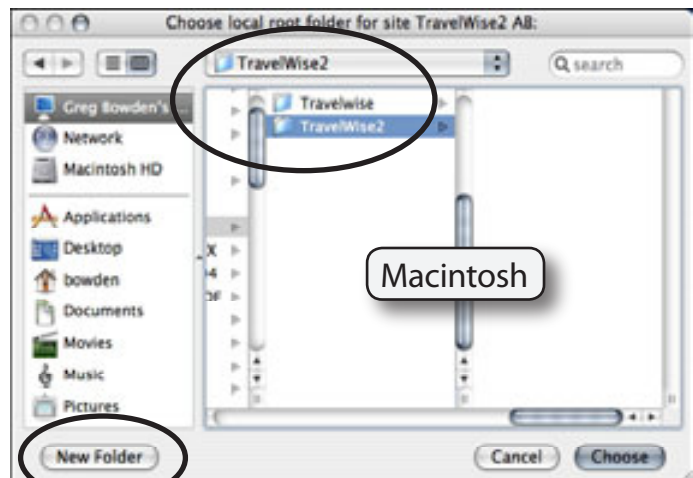
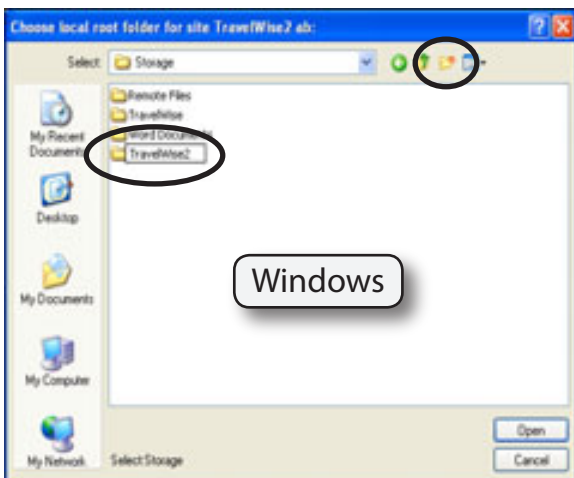
3 Click on the BASIC tab and call the site:
TravelWise2 <your initials>
then click on NEXT.

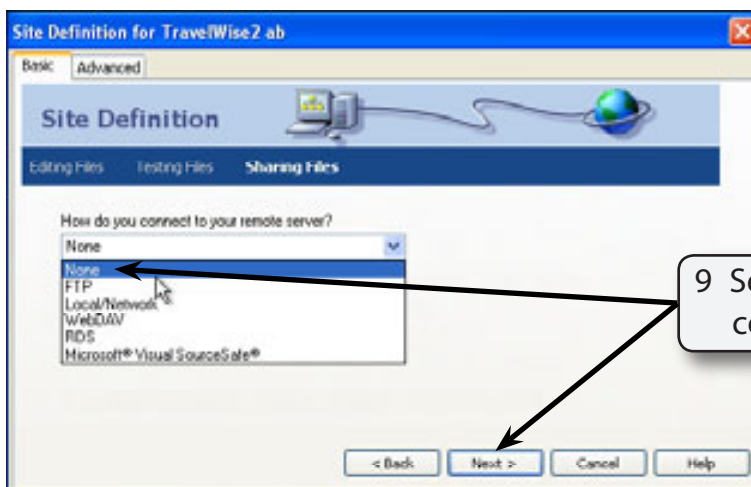
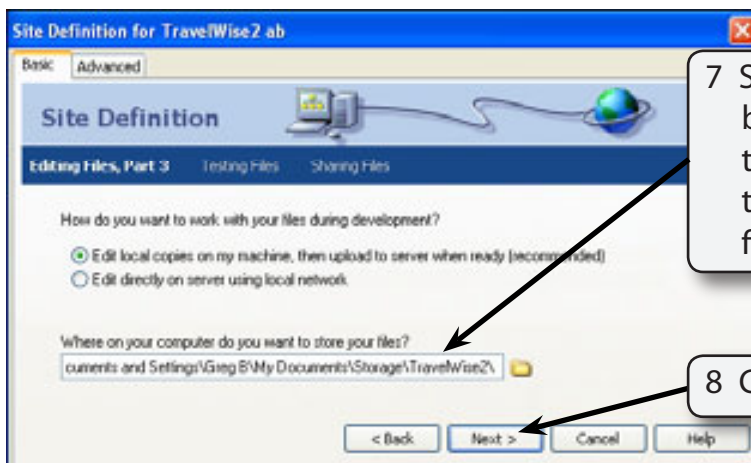
4 Select NO to SERVER TECHNOLOGIES and click on NEXT.



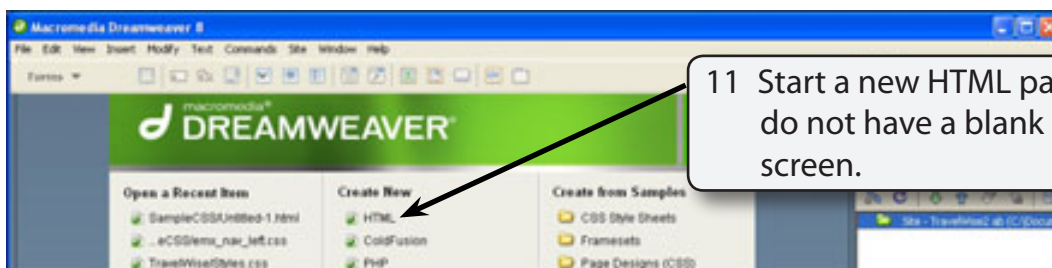
5 Click on the folder icon next to the 'Where do you want to store the files?' section.

6 Access your STORAGE folder and create a new folder called TRAVELWISE2.





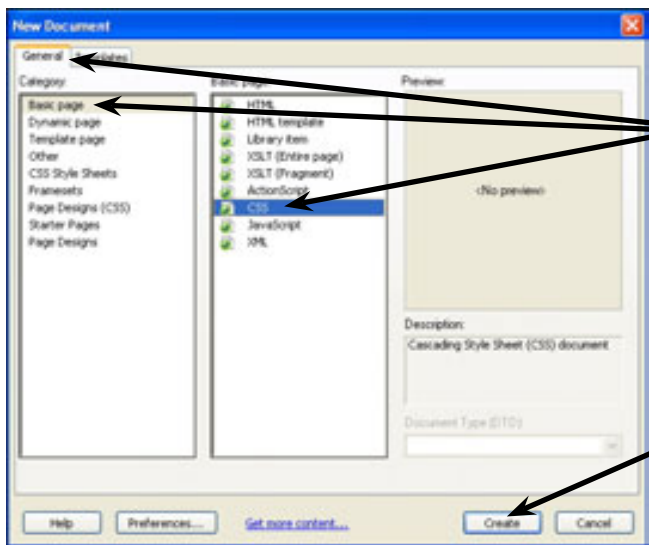
10 Click on DONE to create the site.



Saving the Pages

Two pages need to be saved. The blank HTML page and the external CSS page that will be used to store all the formatting and layout information.

- 1 Save the current untitled page in the TRAVELWISE2 folder as:
index or index.html
- 2 Display the FILE menu and select NEW.



3 In the GENERAL tab select BASIC PAGE then select CSS in the BASIC PAGE column.

4 Select CREATE to start the file.

- 5 Save the page in your TRAVELWISE2 folder as:
tw.css

