

Editing and Importing Tools

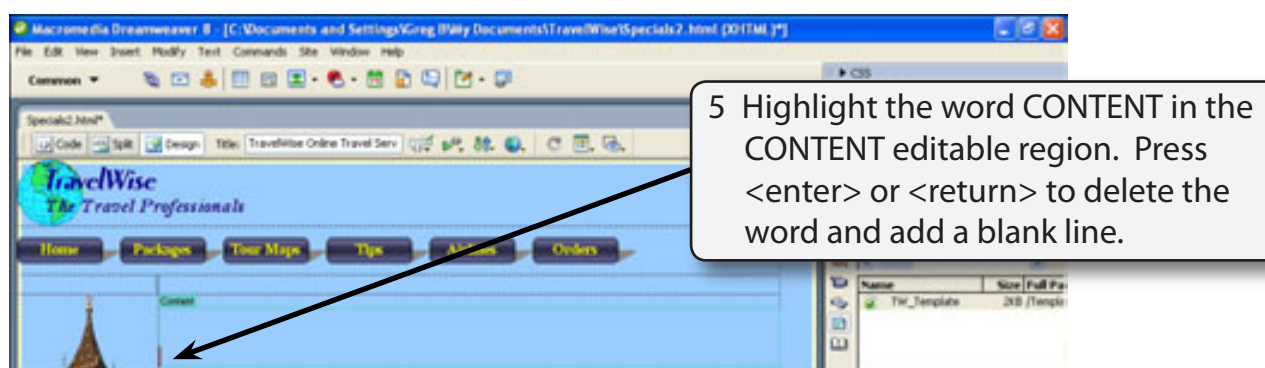
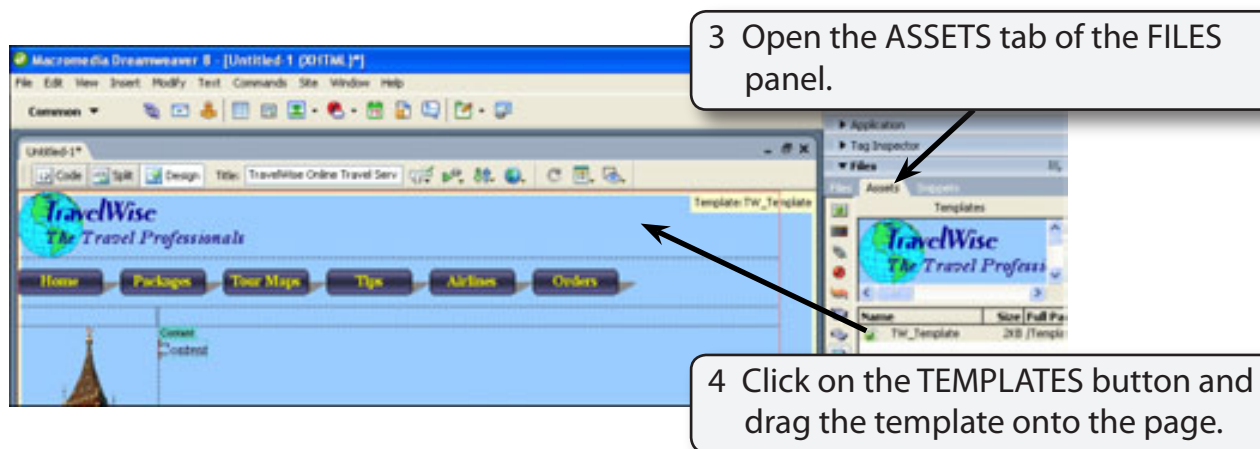
DreamWeaver allows you to make limited changes to graphics without needing to open a graphics editing program and it also allows you import fully formatted Microsoft Word and Excel documents.

In this chapter you will create another SPECIALS page that provides information about tour packages on a selected city.

Starting the Page

The page will be created from the TW_TEMPLATE file.

- 1 Load DreamWeaver, or close the current page and start a new BASIC HTML PAGE.
- 2 Set the FILES panel to your TRAVELWISE site.

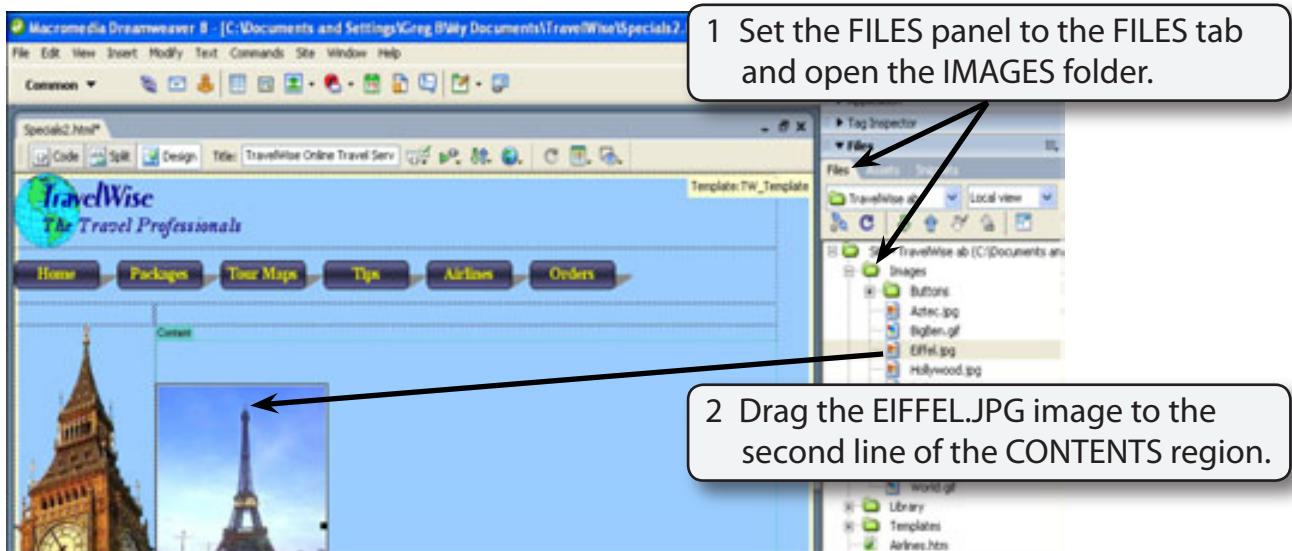


- 6 Save the page in your TRAVELWISE folder as:

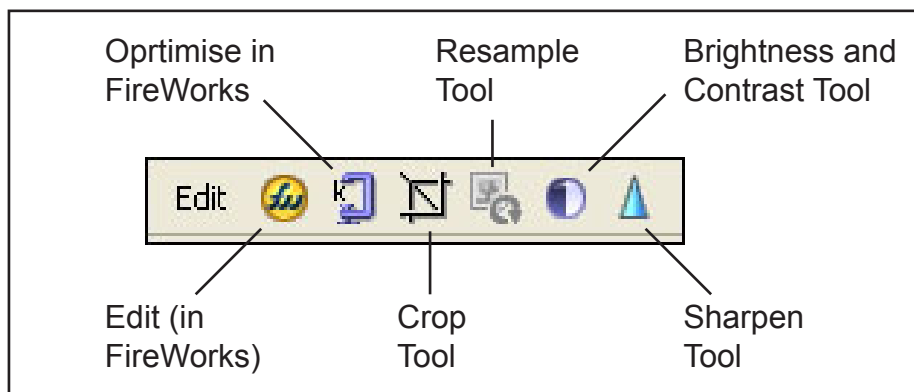
Specials2 or Specials2.html

Editing Images

When you need to make some minor alterations to images, those changes can be carried out within DreamWeaver. Previously, you needed to copy the image to a graphics editing program such as Macromedia FireWorks or Adobe Photoshop. These programs are still required if you need to make detailed changes to the image.



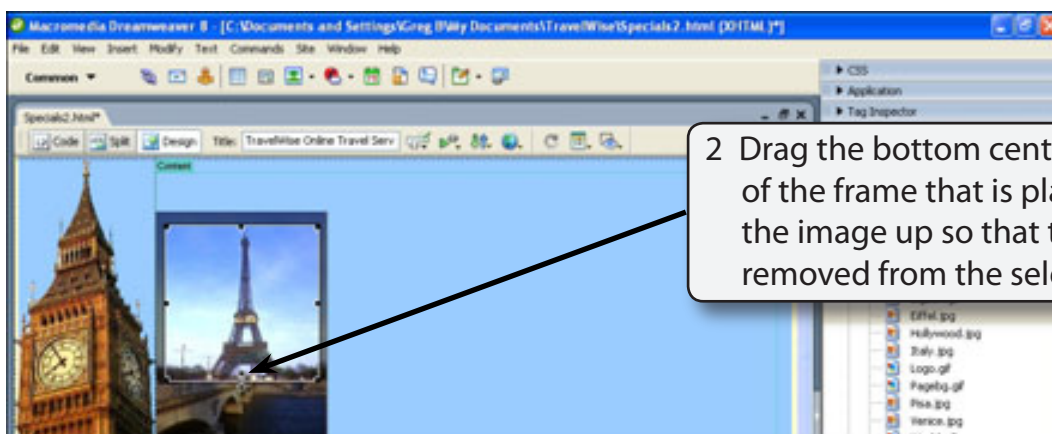
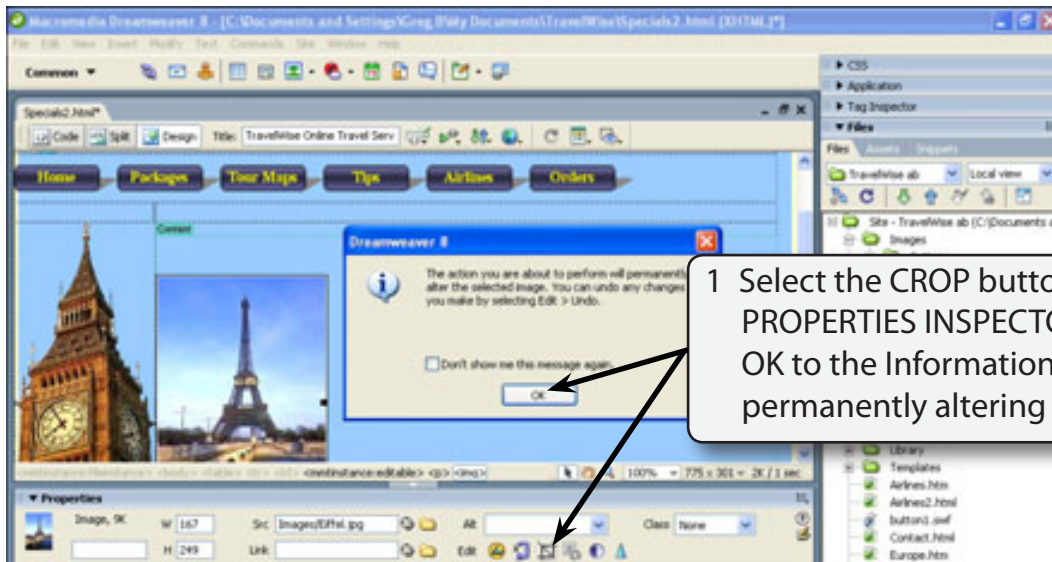
- 3 With the image selected the image editing tools are displayed in the PROPERTIES INSPECTOR. They have the following meaning:



- 4 The first two tools EDIT (in FireWorks) and OPTIMISE IN FIREWORKS open the FireWorks program where detailed changes can be made. The other tools are used within DreamWeaver.

A Cropping an Image

There are times when you may want part of an image to be displayed. This can be done within DreamWeaver. Let's say that we just want the Eiffel Tower showing, not the bridge in front of it.

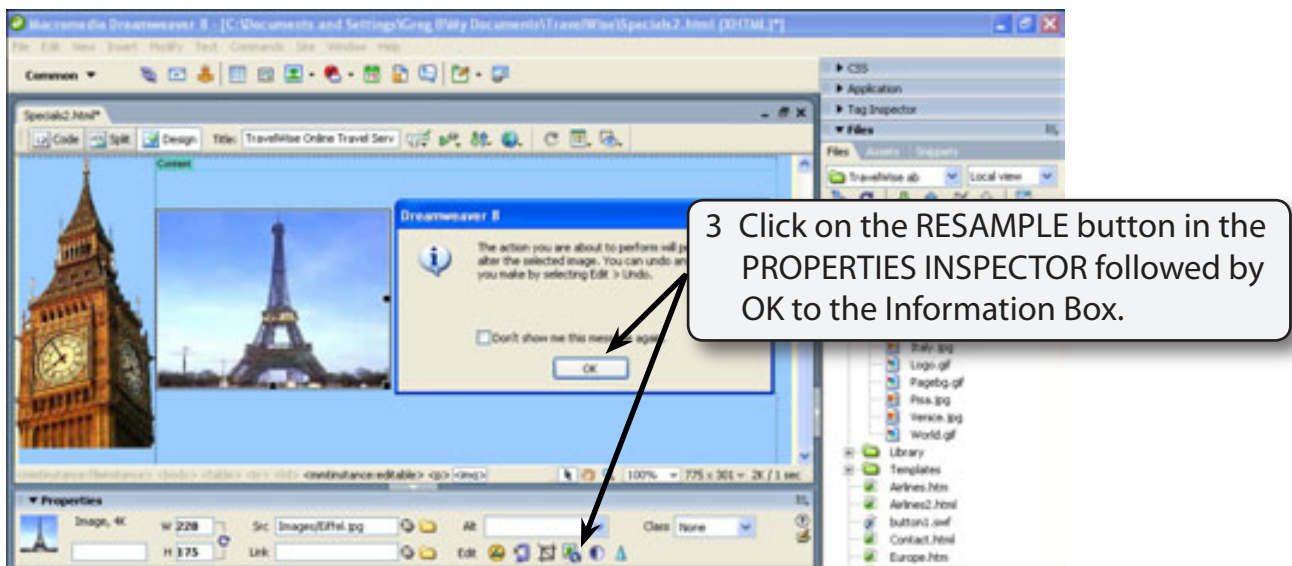
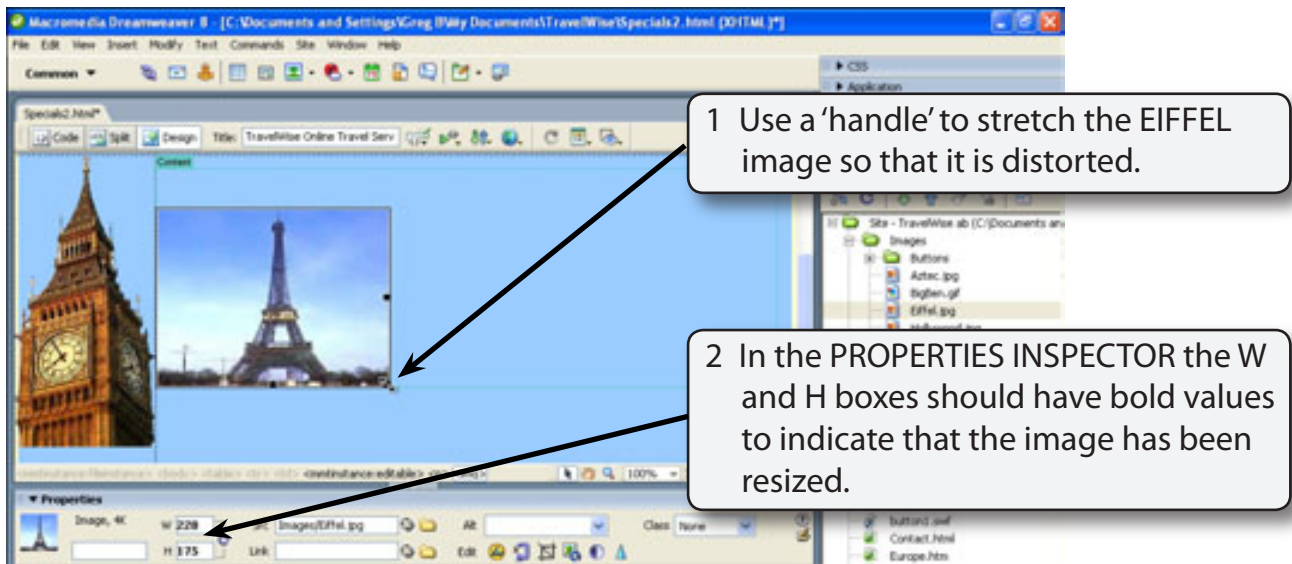


3 Double click inside the crop frame and the bridge should be removed.

NOTE: You can select **UNDO CROP** from the **EDIT** menu to return the image to its original state.

B The Reshape Tool

The Reshape tool tries to smooth resized images so that they look clearer in a browser.



4 The tower should be sharpened a little, but it is only a slight improvement.

5 You can press CTRL+Z or +Z to undo the change to see the original image.