

Guided Computer Tutorials

Learning

Adobe

DreamWeaver CC

Module 2

By Greg Bowden

PUBLISHED BY

GUIDED COMPUTER TUTORIALS

PO Box 311

Belmont, Victoria, 3216, Australia

www.gct.com.au

© Greg Bowden

This product is available in Single or Multi User versions.

Single-user versions are for single student or teacher use at any particular time, just as a single copy of a text book would be used. If you intend to use the tutorials with multiple students, the single user version should be upgraded to the multi-user version.

Multi-user versions allow the school or institution to print as many copies as required, or to place the PDF files on the school network, intranet and staff laptops. A certificate of authentication is provided with multi-user versions. Bookmarks provide links to all headings and sub-headings, and individual chapter files are provided.

First published 2019

ISBN: 978-1-922018-47-2 Module 2

PDF document on DVD or Download

Adobe® DreamWeaver® CC is a product of Adobe Systems Incorporated.

THIS PRODUCT IS NOT ENDORSED OR SPONSORED BY
ADOBE SYSTEMS INCORPORATED, PUBLISHER OF ADOBE
DREAMWEAVER CC

Every effort has been made to ensure that images used in this publication are free of copyright, but there may be instances where this has not been possible. Guided Computer Tutorials would welcome any information that would redress this situation.

Learning Adobe DreamWeaver CC

Module 2 Contents

Chapter 12: Sample CSS Page Layouts

Opening the Sample Page	12-1
Selecting the Page Layout.....	12-1
Looking at the Page Layout.....	12-2
Looking at the CSS File	12-2
Looking at the Page Code	12-3
Adaptive and Responsive Web Sites.....	12-5
DreamWeaver Assignment 12.....	12-7

Chapter 13: Laying out a CSS Based Page

Starting a New Site.....	13-1
Saving the Pages.....	13-3
Setting the DIV Tags	13-4
Looking at the Code	13-4
Inserting the Banner DIV Tag.....	13-5
The Navigation DIV Tag	13-6
The Columns DIV Tag	13-8
Inserting the Nav2 Nested DIV Tag	13-9
Inserting the Content Nested DIV Tag	13-10
Setting the Nav2 and Content Styles	13-12
The Nav2 Style	13-12
The Content Style.....	13-14
DreamWeaver Assignment 13.....	13-18

Chapter 14: Adding Content to CSS Pages

Inserting the Company Logo	14-1
Opening the Page	14-1
Inserting the Image	14-1
Inserting the Navigation Content.....	14-4
Inserting the Home Button	14-4
Inserting the Packages Button	14-5
Inserting the Other Buttons.....	14-6
Inserting the Nav2 Content	14-7
Entering the Text.....	14-7
Adding Some Dummy Links.....	14-8
Inserting the Content Text	14-9
Copying the Text.....	14-9
Pasting the Text.....	14-9
DreamWeaver Assignment 14	14-12

Chapter 15: Formatting CSS Pages

Setting Tag Styles	15-1
The Body Tag	15-1
Changing Some Text	15-4
Creating the H1 Style	15-5
Defining Class CSS Styles.....	15-6
Defining ID CSS Styles.....	15-8
The Banner DIV Tag.....	15-8
The Navigation DIV Tag	15-10
The Columns DIV Tag	15-12
Formatting Link Text.....	15-13
Editing Styles.....	15-17
The Nav2 Region.....	15-17
The Link Text.....	15-19
The Content Style	15-19
Changing a Tag Style Property	15-20
Saving the Page as a Template	15-22
Saving as a Template	15-22
Setting the Editable Region.....	15-23
Using the Template	15-24
Editing the Template	15-26
Understanding the CSS files	15-27
The CSS Designer Panel Width.....	15-29
DreamWeaver Assignment 15	15-30

Chapter 16: Centring Web Pages With a Background

Creating a Container DIV Tag	16-1
Opening the Page	16-1
Inserting the DIV tag	16-1
Moving the Closing DIV Tag.....	16-3
Centring the Web Page.....	16-5
Adding a Coloured Background.....	16-7
Setting the Container Region to White	16-7
Setting the Body Colour.....	16-8
DreamWeaver Assignment 16	16-9

Chapter 17: Responsive Web Page Layouts

Creating the Files	17-1
The Mobile Screen Settings	17-2
Setting the Screen Width.....	17-2
Looking at the CSS Code.....	17-3
The Tablet Screen Settings	17-5
Setting the Screen Width.....	17-5
Looking at the CSS Code.....	17-6
The Desktop Screen Settings	17-7
Setting the Screen Width.....	17-7
Looking at the CSS Code.....	17-8
Creating the Page Layout	17-9
The Banner Style For the Mobile Screen	17-9
The Navigation Style For the Mobile Screen	17-10
The Content Style For Mobile Screen	17-11
Looking at the CSS File	17-13
Adding Styles to the Other Media Queries	17-14
The Tablet Styles	17-14
The Desktop Styles.....	17-16
Setting Global Styles	17-17
DreamWeaver Assignment 17	17-19

Chapter 18: Adding Content to Responsive Layouts

The Banner Content.....	18-1
Entering the Text.....	18-1
Formatting the Mobile Banner Style	18-2
Formatting the Tablet Banner Style	18-4
Formatting the Desktop Banner Style	18-6
Creating the Navigation Bar	18-8
Setting the Links	18-8
Setting Global Link Formats	18-10
Formatting the Mobile Navigation Style.....	18-13
Formatting the Tablet Navigation Style	18-14
Formatting the Desktop Navigation Style.....	18-17
Adding Content to the Content Region	18-20
Looking at the CSS Styles	18-21
DreamWeaver Assignment 18	18-23

Chapter 19: Hiding Content in Responsive Layouts

Hiding a Secondary Navigation Bar	19-1
Creating the Navigation Bar	19-1
Formatting the NAV2 Style.....	19-3
Hiding the NAV2 DIV Container	19-4
Hiding an Image	19-5
Inserting the Image DIV Container	19-5
Inserting the Image	19-7
Formatting the Image Style.....	19-8
Extension Activities.....	19-10
DreamWeaver Assignment 19	19-11

Chapter 20: Using Behaviours

The Behaviours Panel	20-1
Popup Messages	20-2
Setting up a Page	20-2
Popup Dialogue Boxes	20-4
Deleting a Behaviour.....	20-6
Displaying an Enlarged Image.....	20-6
Creating a New Page	20-6
Adding the Behaviour.....	20-7
Validating Forms	20-9
Creating the Orders Page	20-9
Setting the Validation Behaviour.....	20-11
Setting Required Fields	20-11
Setting an eMail Field.....	20-13
Validating Numbers.....	20-15
Effect Behaviours	20-16
DreamWeaver Assignment 20	20-19

Chapter 21: Editing and Importing Tools

Starting the Page	21-1
Editing Images.....	21-2
Cropping an Image	21-3
The Resample Tool	21-4
Brightness and Contrast.....	21-5
The Sharpen Tool	21-6
Importing Microsoft Word Documents	21-6
Opening the Prepared Word Document.....	21-7
Copying the Microsoft Word Text	21-7
Pasting the Text into DreamWeaver.....	21-7
Moving the Image	21-9
Adding a Word Table to the Page	21-10
Copying the Table.....	21-10
Pasting the Table into DreamWeaver	21-11
Adjusting the Table	21-13
DreamWeaver Assignment 21	21-14

Chapter 22: Inserting Media

Creating a Page	22-1
Inserting Smart Photoshop Objects	22-2
Inserting the Object	22-2
Adjusting the Image.....	22-4
Editing Images.....	22-7
Inserting Videos	22-9
HTML5 Videos	22-9
YouTube Videos	22-11
DreamWeaver Assignment 22	22-14

Chapter 23: Code Snippets

Preset Snippets.....	23-1
Opening the Snippets Panel.....	23-1
Inserting Prepared Snippets.....	23-2
Creating Your Own Snippets	23-3
Entering the Snippet Content.....	23-3
Saving the Snippet.....	23-4
Using the Snippet.....	23-6
Adding Images to Snippets	23-6
DreamWeaver Assignment 23	23-10

Chapter 24: Useful Tools

Screen Displays	24-1
Portrait Orientation.....	24-1
Custom Page Displays.....	24-2
Deleting Page Sizes.....	24-4
CSS Transitions.....	24-5
Creating a CSS Style on the Image.....	24-6
Applying a CSS Transition.....	24-7
Looking at the Code	24-10
Editing CSS Transitions	24-11
Tabbed Panels.....	24-13
Inserting the Tabbed Panel	24-13
The London Tab.....	24-13
The Paris Tab.....	24-15
Previewing the Page.....	24-16
Adjusting the Tabbed Panels.....	24-17
Starter Templates.....	24-18

DreamWeaver Project 2

Stewarts Real Estate	P2-2
----------------------------	------

Sample CSS Page Layouts

Style sheets are not only used to record the text formatting of a page they can also be used to store the layout information as well. Laying out pages using CSS styles involves storing all the text format and layout information in a separate CSS STYLES SHEET file. The advantages of doing this are:

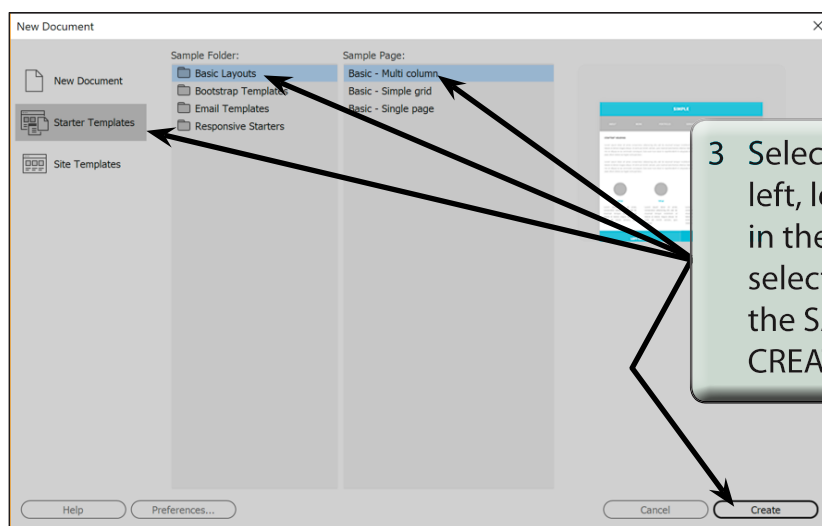
- There is less code in the web page so the page loads faster.
- The pages can be made to look the same on different sized screens.

Laying out pages using CSS styles is a little more involved than entering text and images straight onto a page, but it has become the standard way of creating detailed web page designs, so it is worth the initial effort. In this chapter you will look at some of the sample CSS page designs that come with DreamWeaver.

Opening the Sample Page

A Selecting the Page Layout

- 1 Load DreamWeaver and set the FILES panel to your TRAVELWISE site (or another site if you did not do Module 1).
- 2 Select CREATE NEW from the WELCOME screen or select NEW from the FILE menu.



- 4 The template shows a simple page layout in columns.

B Looking at the Page Layout

1 Notice that there is a CSS file attached to the main page.

2 Set the view to SPLIT VIEW then click on different sections of the page and its code will be shown in the CODE VIEW pane.

- 3 Press CTRL+S or COMMAND+S to save the page, SAMPLE will do for the page name.

Looking at the CSS File

To gain an understanding of why this page has a CSS page layout, the files and code can be looked at more closely.

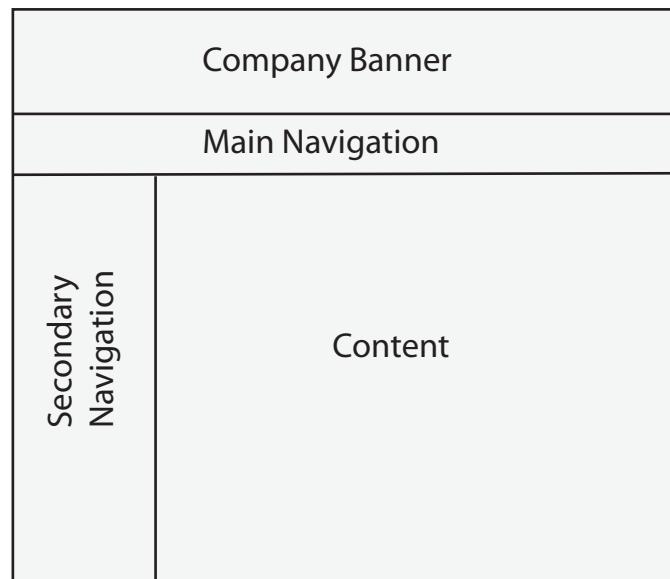
1 Click on the MULTICOLUMNTEMPATE. CSS button in the RELATED FILES BAR above the DOCUMENT WINDOW to open the CSS file.

2 Notice that for the light CODE THEME the CSS rules are in green, the properties are in purple and the property values are in orange and blue.

Laying out a CSS Based Page

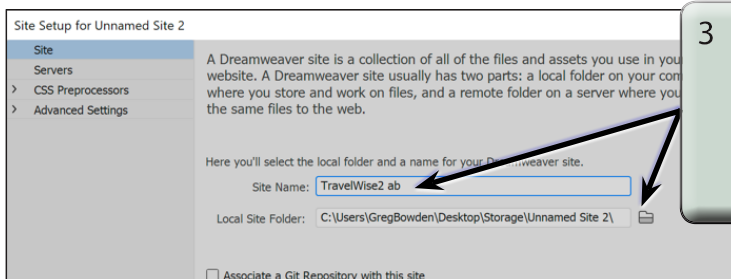
One of the best ways to learn how to use CSS styles to layout pages is to create a new site. A static web layout will be created initially to introduce the techniques before moving onto a responsive layout. A page layout will be created in this chapter, the content added to it in the next chapter and the layout formatting applied in Chapters 15 and 16.

The pages will have the following structure:



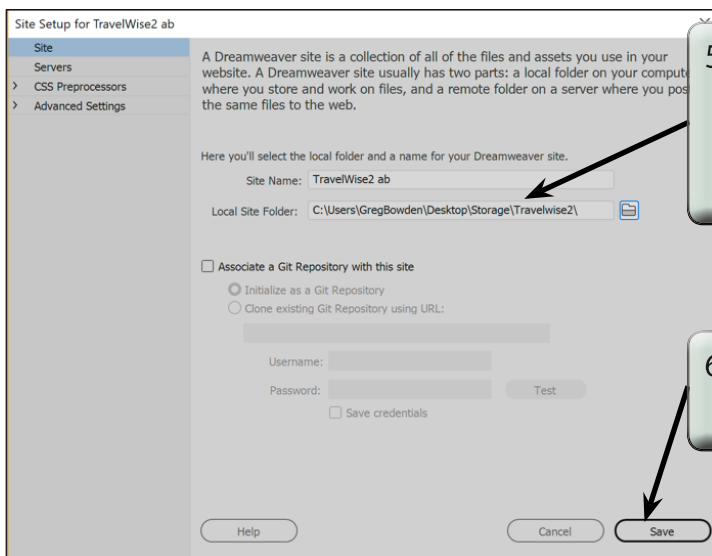
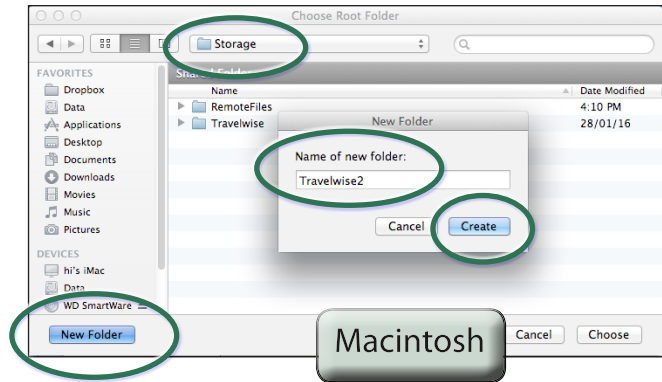
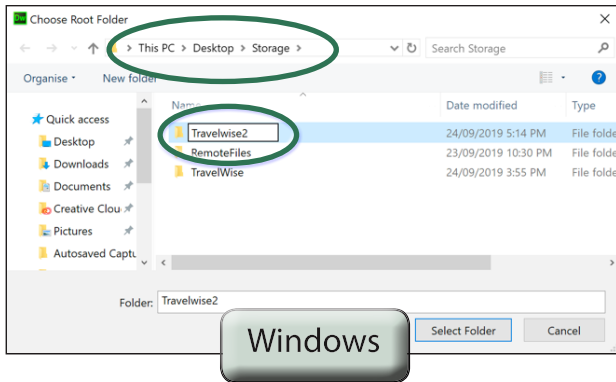
Starting a New Site

- 1 Load DreamWeaver or close the current documents.
- 2 Display the SITE menu and select NEW SITE.

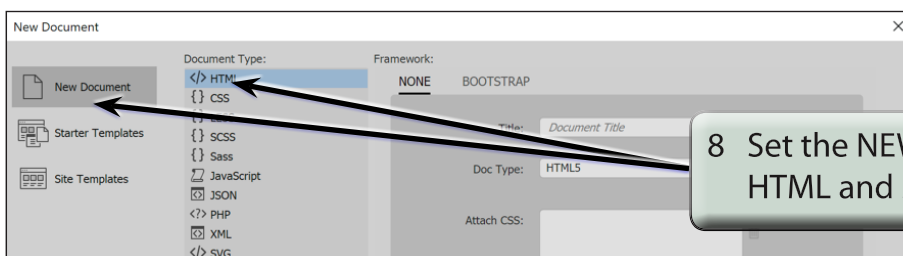


- 3 In the SITE NAME box enter:
TravelWise2 <your initials>
then click on the BROWSE icon next to the LOCAL SITE FOLDER box.

- 4 Access your STORAGE folder and create a new folder called TRAVELWISE2. Refer to the following diagrams.



- 7 Select CREATE NEW from the WELCOME screen or select NEW from the FILE menu.

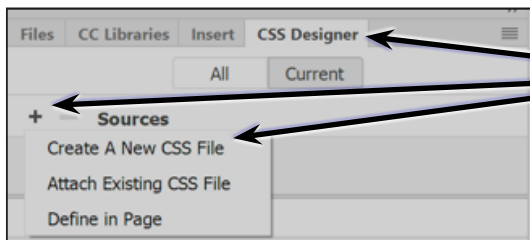


Saving the Pages

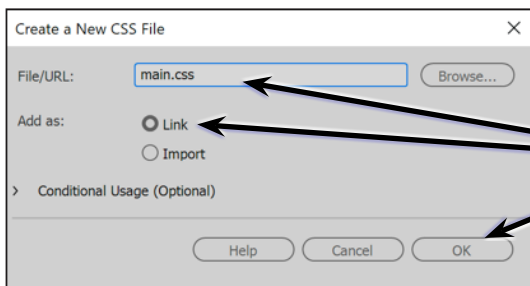
Two pages need to be saved. The blank HTML page and the external CSS page that will be used to store all the formatting and layout information.

- 1 Save the page in your TRAVELWISE2 folder as:

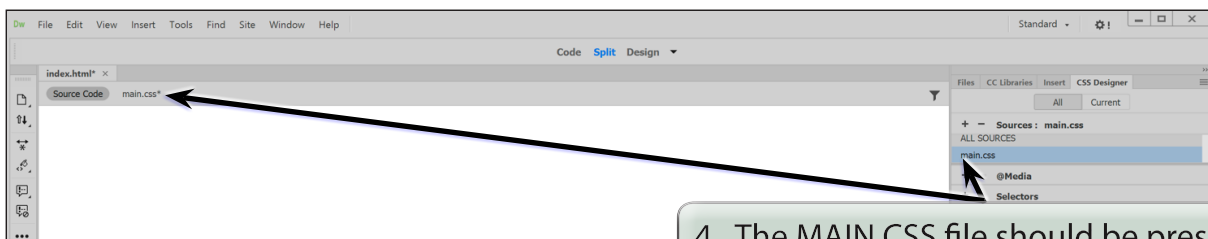
index.html



- 2 Expand the CSS DESIGNER panel, click on the ADD CSS SOURCE button next to SOURCES and select CREATE A NEW CSS FILE.



- 3 In the FILE/URL box enter:
main.css
to name the CSS file, ensure that LINK is selected next to ADD AS and click on OK.



- 4 The MAIN.CSS file should be present in the SOURCES section of the CSS DESIGNER panel and it is also added to the RELATED FILES BAR.

NOTE: A new CSS page could have been created then attached to the INDEX page, but creating the CSS page from the CSS DESIGNER panel carries out those tasks in one step.

Setting the DIV Tags

When laying out a page using CSS, regions of the page are defined using DIVISION tags (DIV tags for short). The page to be created will have three divisions:

- Banner** which will contain a logo for TravelWise.
- Navigation** which will contain the top level navigation buttons.
- Columns** which will contain a secondary navigation section and the main content of the page.

DIV tags will be used to set each of these sections.

A Looking at the Code

1 Set the view to LIVE and SPLIT in the DOCUMENT TOOLBAR to set the screen to show both the CODE and LIVE panes.

2 Notice that some sections of the code are labelled in `<>` brackets, for example: `<head>`, `<title>`, `<link>` and `<body>`. These are the HTML tags.

3 In the PROPERTIES INSPECTOR set the DOCUMENT TITLE box to:
TravelWise Travel Services
and click in the LIVE pane. The text for the page title is enclosed within `<title>` tags in the CODE pane.

Adding Content to CSS Pages

Adding content to CSS page layouts is basically the same as adding content to normal pages. With CSS page layouts you need to take care to position the cursor in the required DIV tag.

Let's add a simple company logo, some navigation buttons and some text to the layout you created in the last chapter.

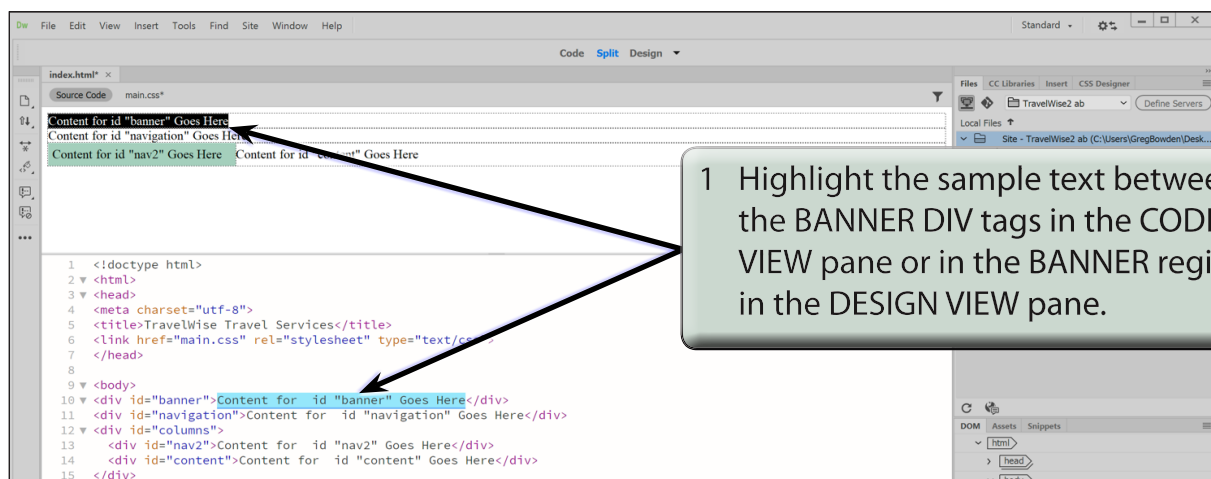
Inserting the Company Logo

The company logo will be placed in the BANNER region. This can be done in the CODE pane or in the DESIGN pane.

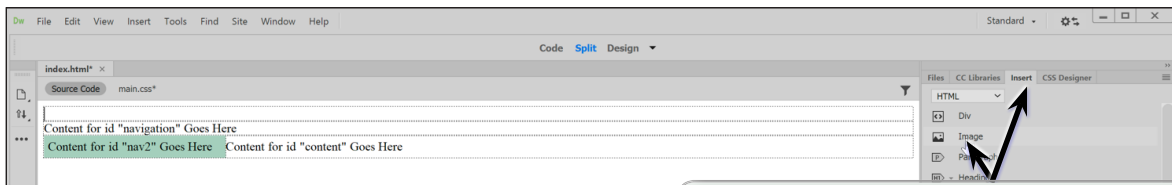
A Opening the Page

- 1 Load DreamWeaver and set the FILES panel to your TRAVELWISE2 site.
- 2 Open the INDEX.HTML page, set the screen to DESIGN VIEW then click on the SPLIT VIEW button to show both the CODE and DESIGN panes.

B Inserting the Image

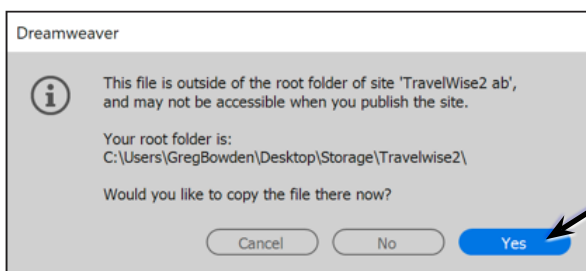
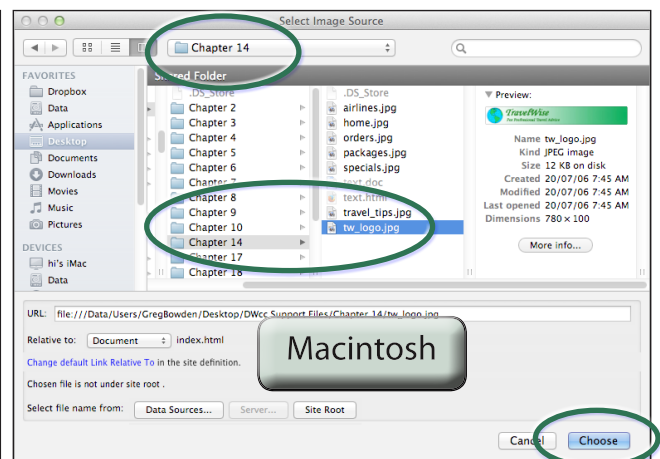
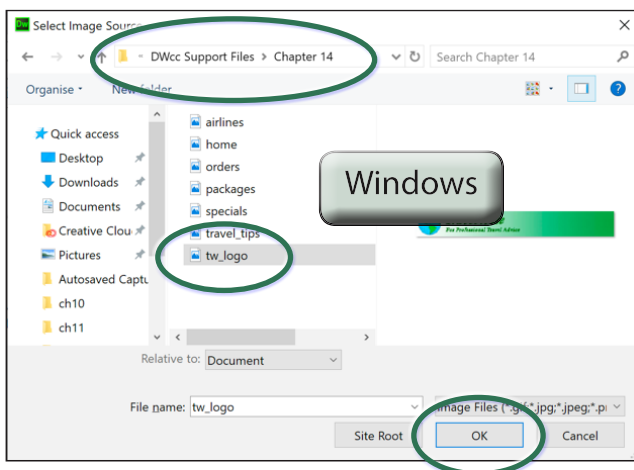


- 2 Press the BACKSPACE or DELETE key to remove the text.



3 Open the INSERT panel, set it to the HTML tools and select the IMAGE button.

- 4 Access the DWcc SUPPORT FILES, open the CHAPTER 14 folder, select the TW_LOGO.JPG file and select OK or CHOOSE. Refer to the following diagrams.



5 Click on YES to the dialogue box telling you that the image is outside the root folder of the TRAVELWISE2 site.

Formatting CSS Pages

The formatting of CSS pages is carried out by setting the required styles. There are four different types of CSS styles:

Class: which are styles that apply to any HTML element.

Tag: where you create styles based on HTML tags such as the <body> tag.

ID: where you set styles on specific unique page elements such as DIV tags.

Compound: where you set styles on two or more class, tag or ID styles simultaneously.

These style types will be used to enhance the page you created in the last two chapters. In this chapter the CSS DESIGNER panel will be used to create the styles. In Chapter 13 you created a style by using the NEW CSS STYLE button in the INSERT DIV dialogue box. You will then be able to decide which method you prefer to use to create CSS styles.

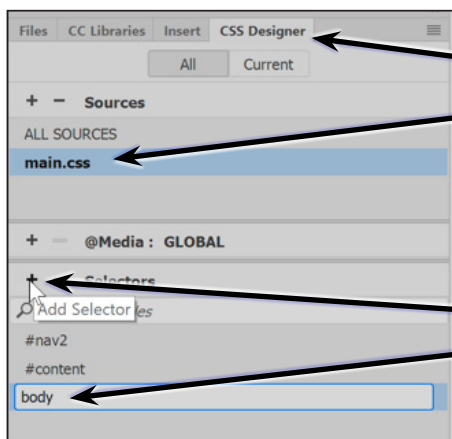
Setting Tag Styles

To illustrate how to set TAG styles the <body> and <h1> tags (for the BODY and the HEADING 1 styles) will be adjusted.

- 1 Load DreamWeaver and set the FILES panel to the TRAVELWISE2 site.
- 2 Open the INDEX.HTML page and set the screen to DESIGN VIEW and turn on SPLIT VIEW.

A The Body Tag

The body tag controls the format of the whole page. You can set some global formats using a style to control the body tag, then make adjustments to other sections.

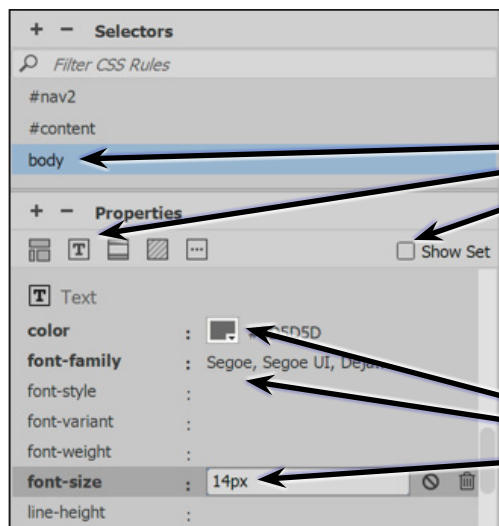


1 Open the CSS DESIGNER panel and select the MAIN.CSS file in the SOURCES section.

2 Click on the ADD SELECTOR (+) icon in the SELECTORS section and enter:

body

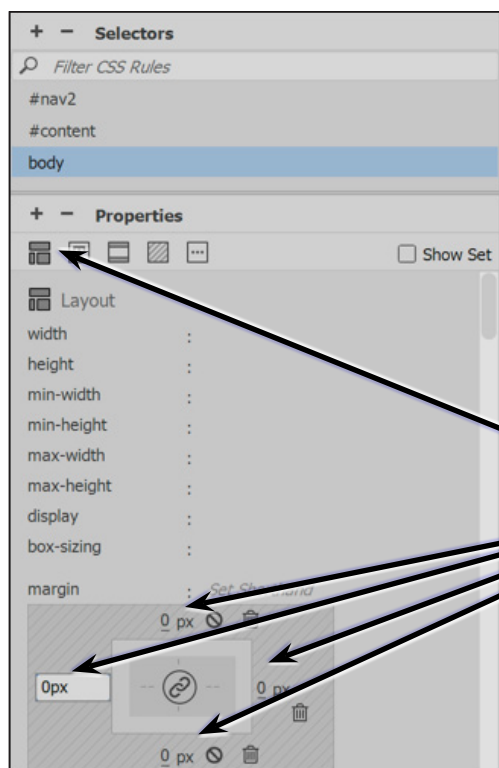
in the provided box.



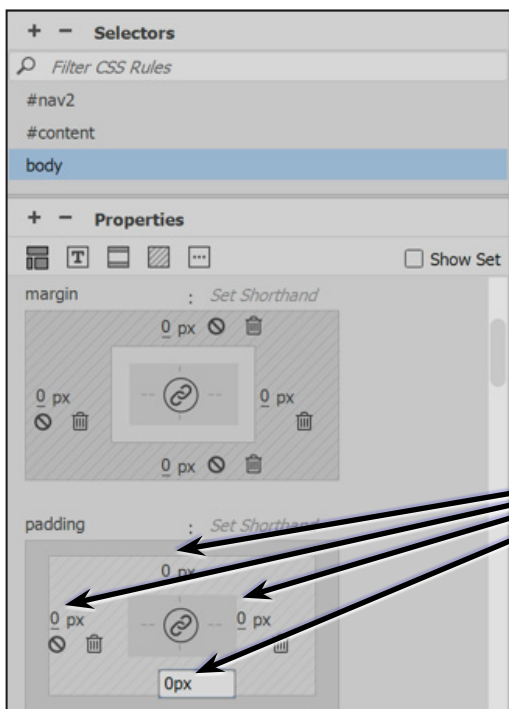
3 Press **<enter>** or **<return>** twice so that the PROPERTIES are displayed. Check that SHOW SET is deselected and click on the TEXT icon to show the text properties.

4 Set the COLOUR to DARK GREY, the FONT-FAMILY to SEGOE and the FONT-SIZE to 14 px.

- NOTE:**
- i These settings will become the default settings for all the text on the page.
 - ii You can provide more space for the CSS DEVELOPER panel by double clicking on the DOM panel to collapse it.



5 Click on the LAYOUT category icon at the top of the PROPERTIES section and click in each of the MARGIN boxes to turn them on and leave them set to 0. This adds the left, right, top and bottom margins to the style.

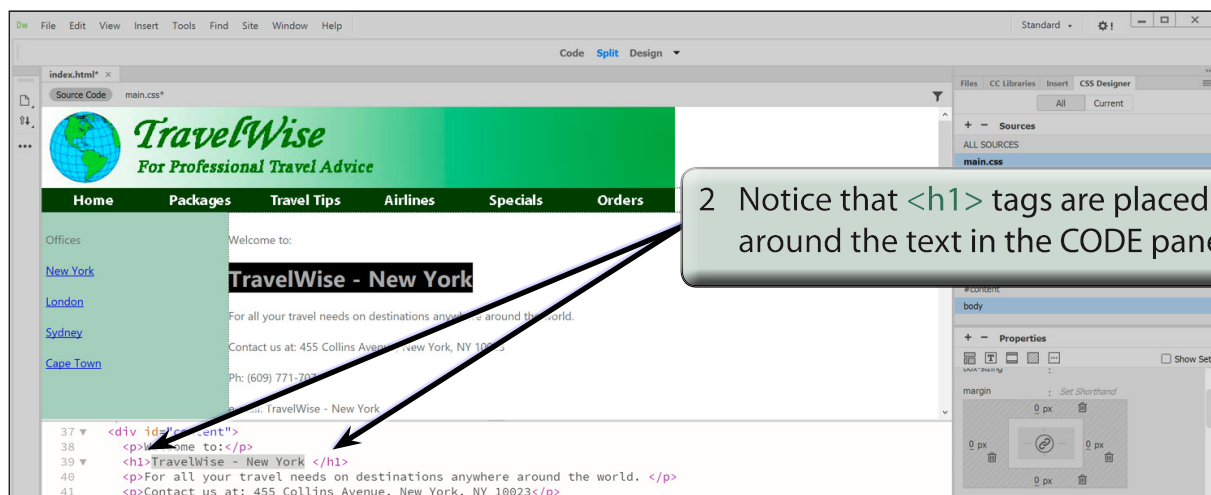
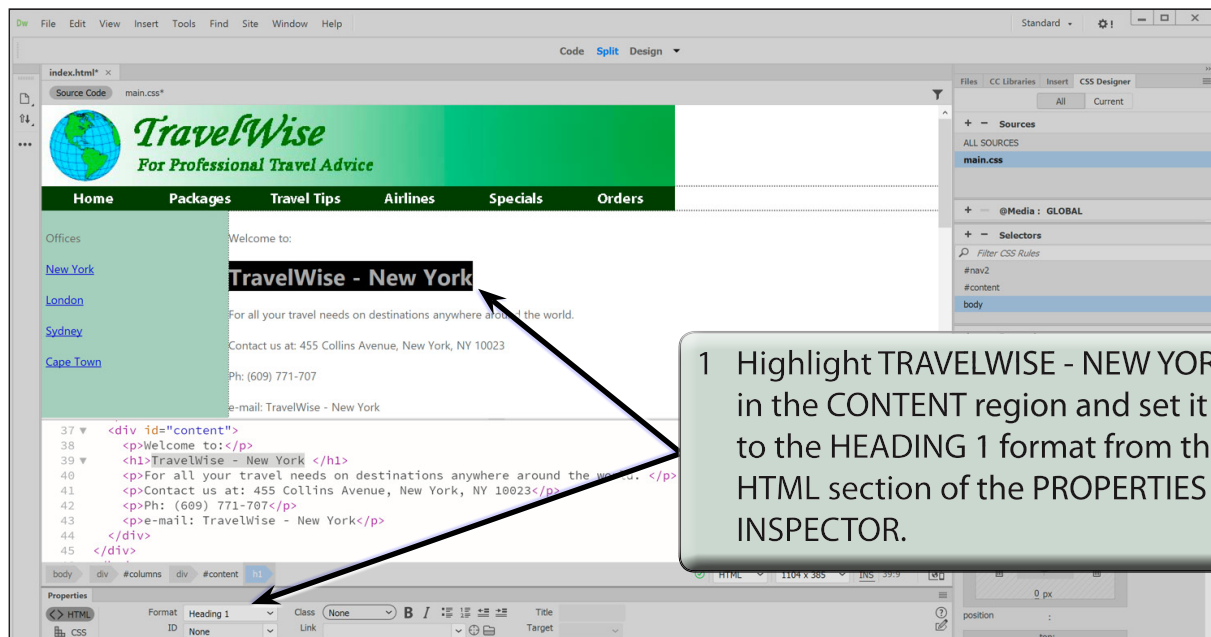


6 Click in each of the PADDING boxes to turn them on and leave them set to 0.

- NOTE:**
- i Setting the PADDING and MARGINS to 0 ensures that there is no white space at the top when the page is viewed in a browser.
 - ii The PADDING and MARGIN values need to be selected to add their values to the style. You can turn on their centre icon and select one value to set all the values at once.
 - iii The BODY style is added to the MAIN.CSS file in the CSS DESIGNER panel. All the HTML tags can be controlled in this fashion by creating a CSS style for them.

B Changing Some Text

Now that you have set the default body text settings, some styles can be created to format the headings or sub-headings. You can modify some of the HTML tags or create your own styles. We will look at both methods.



Centring Web Pages With a Background

Web pages are now being displayed on a variety of different devices and monitor sizes so it has become common practice to centre the page content and include a background behind the page. The process is very easy when pages are laid out using CSS styles.

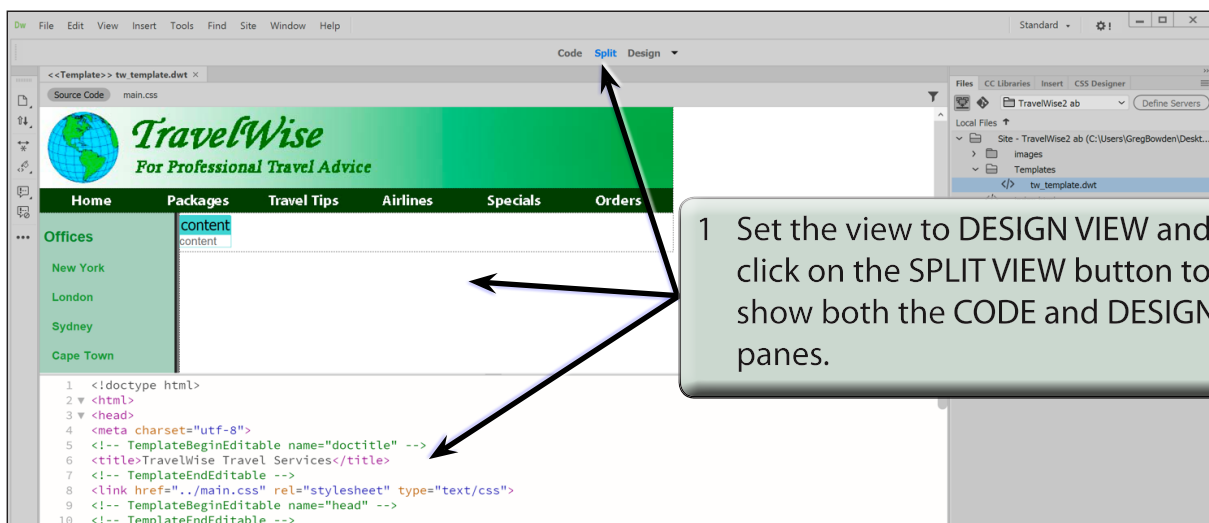
Creating a Container DIV Tag

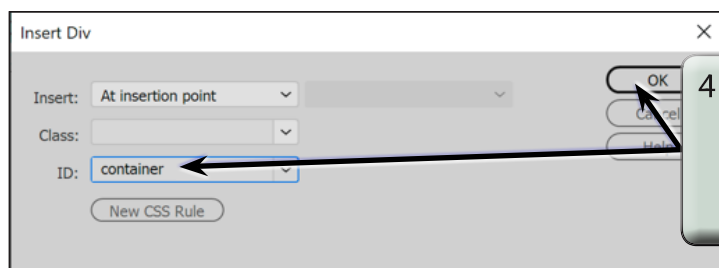
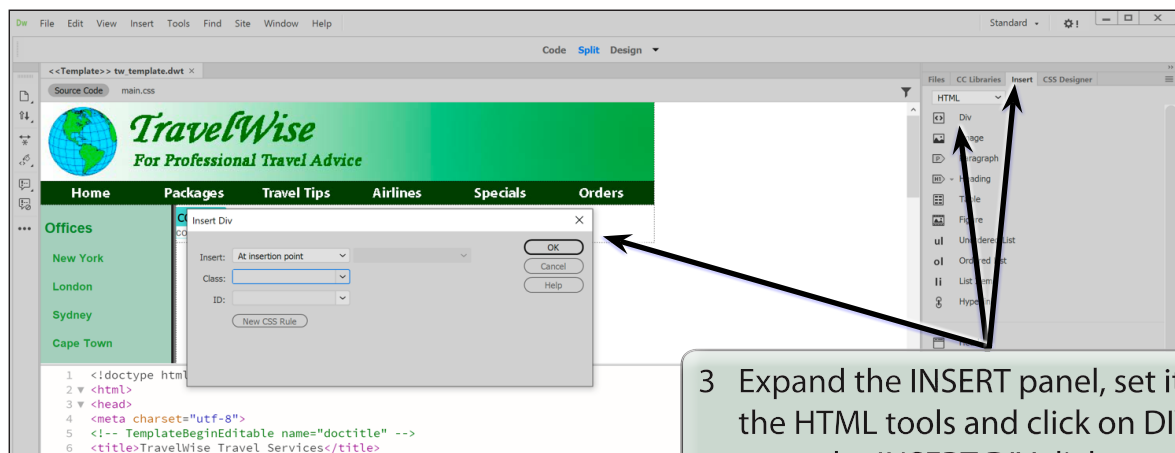
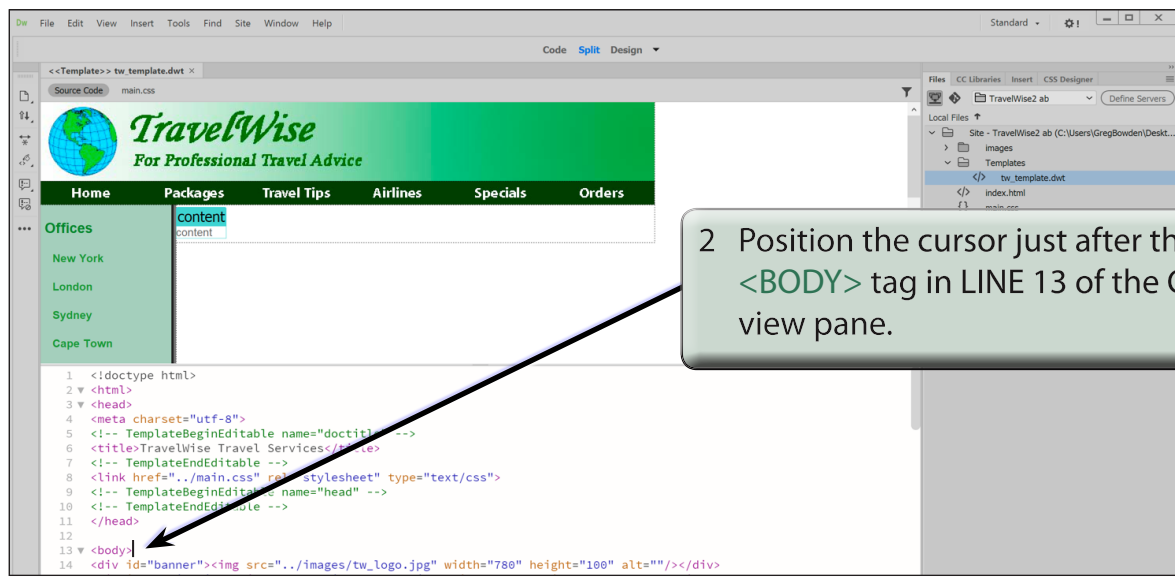
To centre the web page it is helpful to place the whole page in a containing DIV tag. This tag can then have a CSS style applied to it to set its background to a colour so that the content of the web page can be seen over a different coloured background.

A Opening the Page

- 1 Load DreamWeaver and set the FILES panel to your TRAVELWISE2 site.
- 2 Open the TW_TEMPLATE.DWT file from the TEMPLATES folder of the FILES panel.

B Inserting the DIV tag





Responsive Web Page Layouts

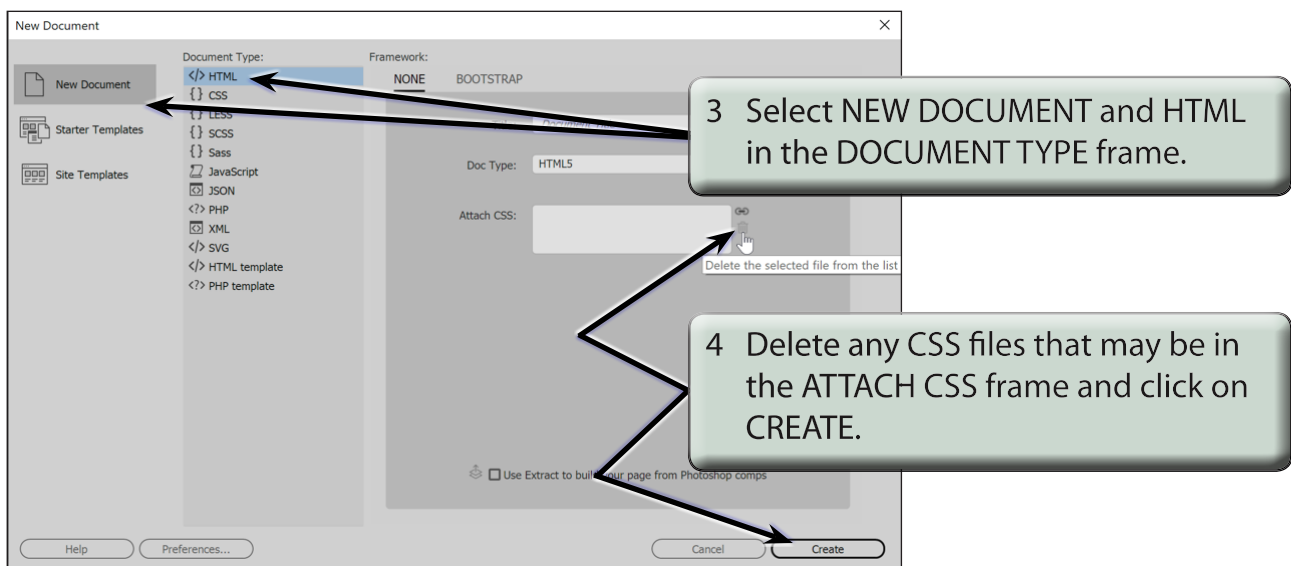
Most modern web designers use either an adaptive web design where the layout adapts for three different screen sizes or a responsive web layout where the layout can adapt to many different screen sizes. Responsive web layouts usually involve a lot more work.

In this chapter you will create a simplified responsive web layout and in the next chapter insert some content into it. The current site will be used, but a new CSS file will need to be created.

Creating the Files

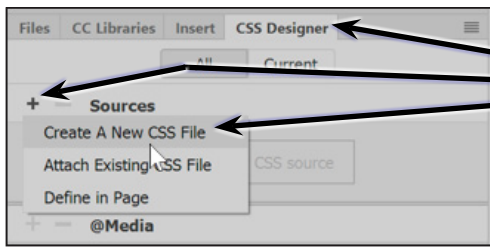
Two files will be created. An INDEX2.HTML page and a related CSS page that will store the layout and formatting code.

- 1 Load DreamWeaver CC or close the current pages and set the FILES panel to your TRAVELWISE2 site.
- 2 Select CREATE NEW from the WELCOME screen or select NEW from the FILE menu to start a new document.

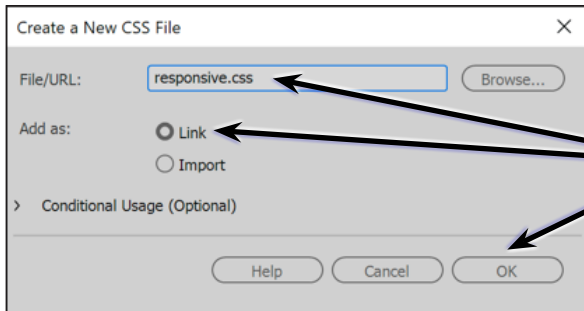


- 5 Save the page in your TRAVELWISE2 folder as:

index2.html



6 Open the CSS DESIGNER panel, click on the ADD CSS SOURCE (+) button and select CREATE A NEW CSS FILE.



7 In the CREATE A NEW CSS FILE dialogue box click in the FILE/URL box and enter:

responsive.css

Check that the ADD AS section is set to LINK and select OK.

NOTE: The RESPONSIVE.CSS file should be added to the INDEX2.HTML file in the RELATED FILES BAR.

8 Turn on LIVE VIEW and set the screen to SPLIT VIEW.

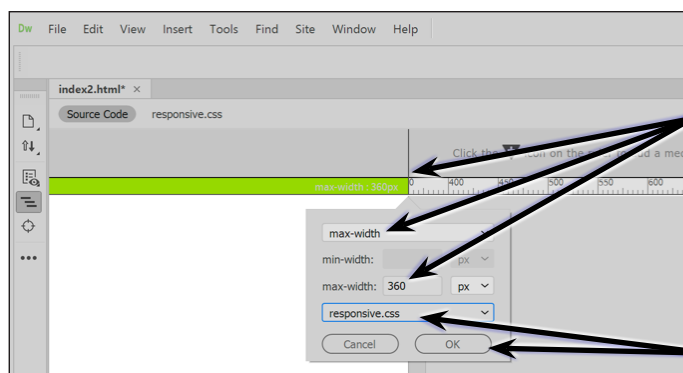
The Mobile Screen Settings

The first screen layout (called a media query) will be for mobile screens. There are many different mobile screen sizes, so you need to set a compromise. In this case a width of 360 px will be used. The height is not important as users will need to scroll their screens.

A Setting the Screen Width

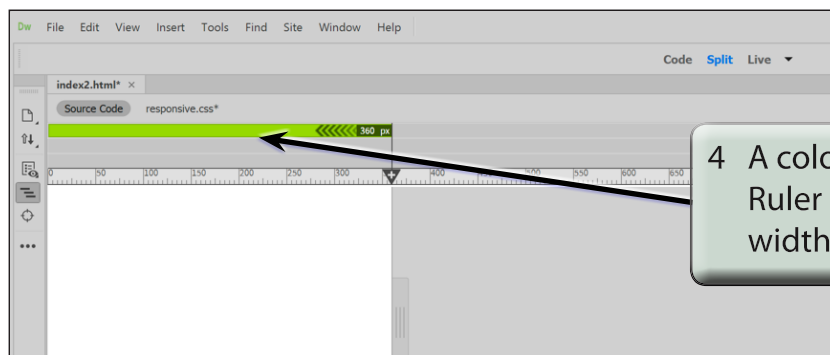


1 Drag the shaded bar at the right of the workspace to 360 px in the Ruler.



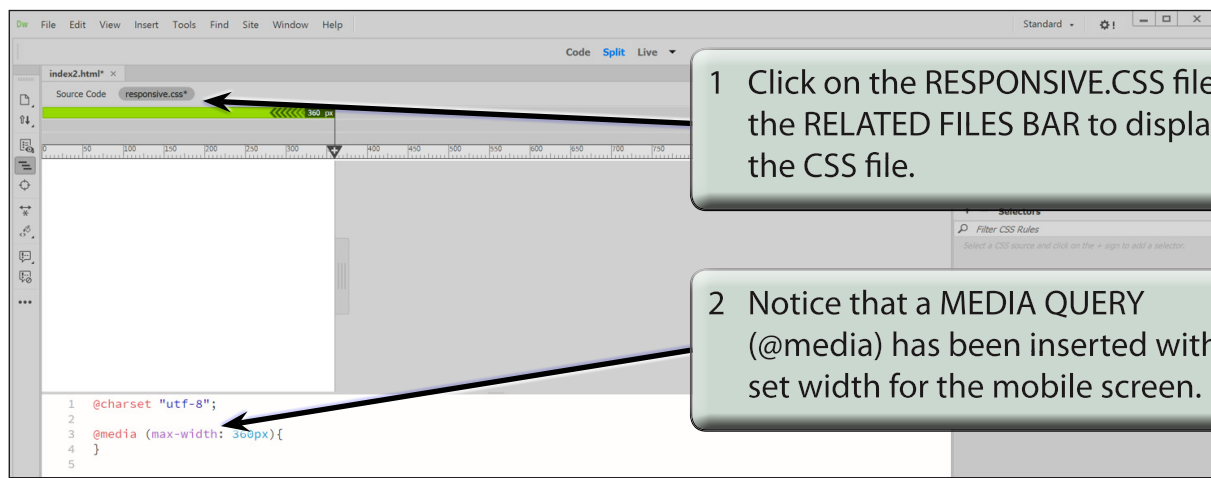
2 Click on the TRIANGLE icon in the RULER to insert a media query. Leave the top box set to MAX-WIDTH and the MAX-WIDTH box below it set to 360 px.

3 Click on the CREATE A NEW CSS FILE box, select the RESPONSIVE.CSS file and select OK.



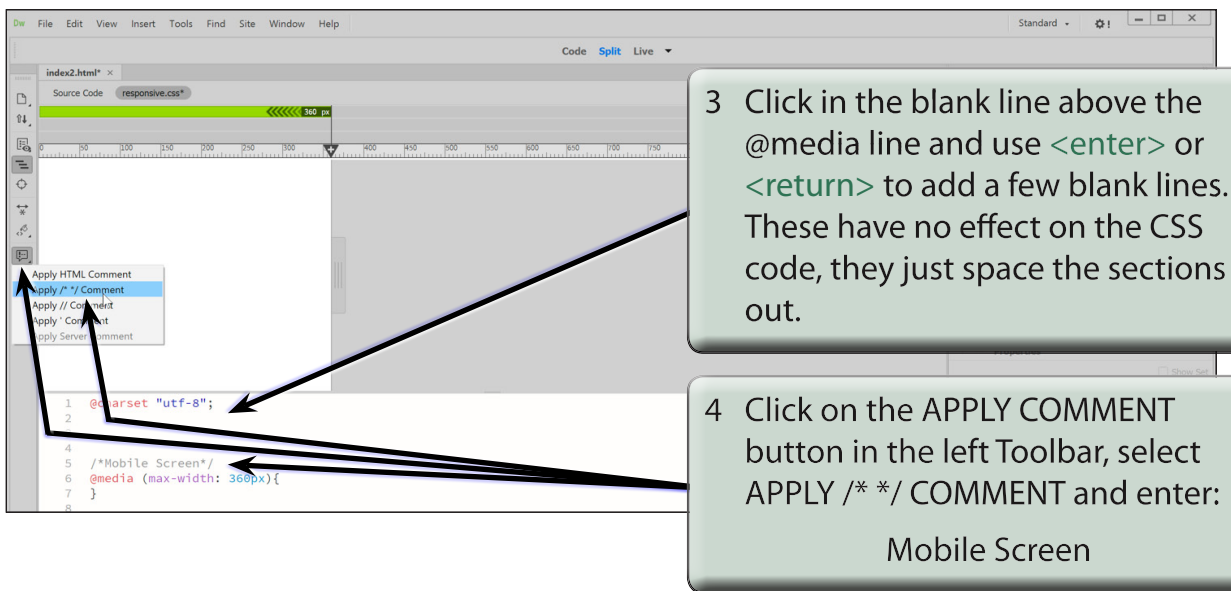
4 A coloured bar is added above the Ruler to show the mobile screen width.

B Looking at the CSS Code



1 Click on the RESPONSIVE.CSS file in the RELATED FILES BAR to display the CSS file.

2 Notice that a MEDIA QUERY (@media) has been inserted with the set width for the mobile screen.

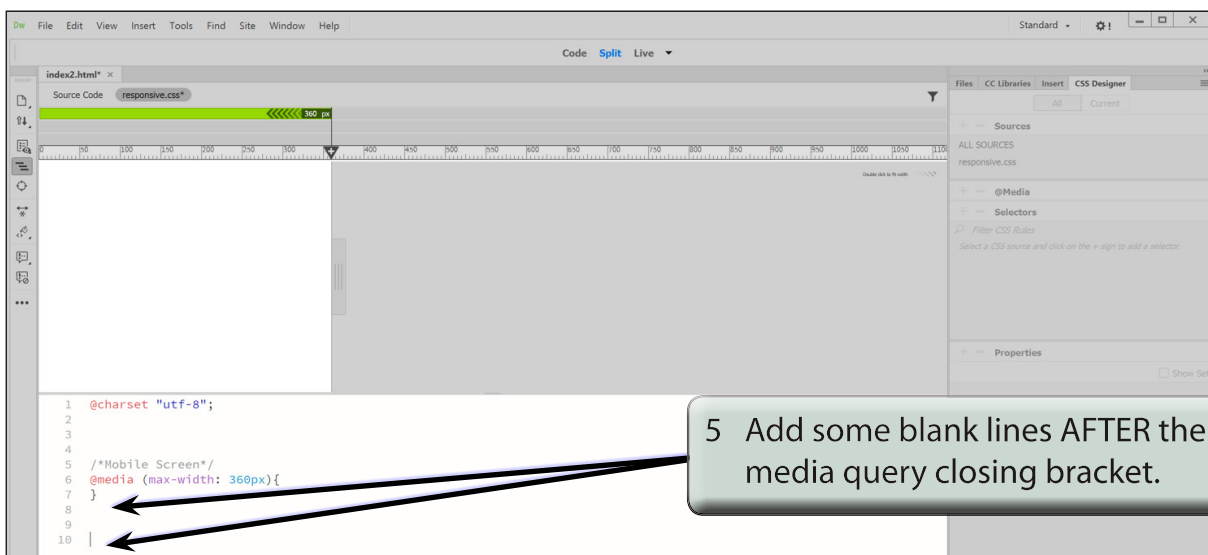


3 Click in the blank line above the @media line and use `<enter>` or `<return>` to add a few blank lines. These have no effect on the CSS code, they just space the sections out.

4 Click on the APPLY COMMENT button in the left Toolbar, select APPLY /* */ COMMENT and enter:
Mobile Screen

```
1 @charset "utf-8";
2
3
4
5 /*Mobile Screen*/
6 @media (max-width: 360px){
7 }
8
```

- NOTE:**
- i The comments are displayed in grey and they have no effect on the code. They simply allow you to label the different sections of the code to make editing easier.
 - ii Comments in a CSS document need to be enclosed between `/* */` symbols. You can enter these symbols directly or use the APPLY COMMENT button.



5 Add some blank lines AFTER the media query closing bracket.

```
1 @charset "utf-8";
2
3
4
5 /*Mobile Screen*/
6 @media (max-width: 360px){
7 }
8
9
10
```

Adding Content to Responsive Layouts

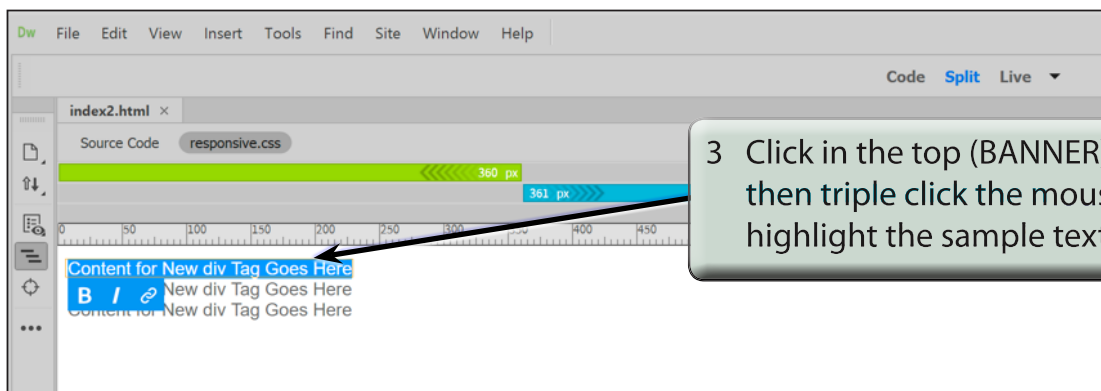
Now that the structure of the layout has been created, content can be added. Each DIV tag can have multiple styles applied to it from the different media queries.

The Banner Content

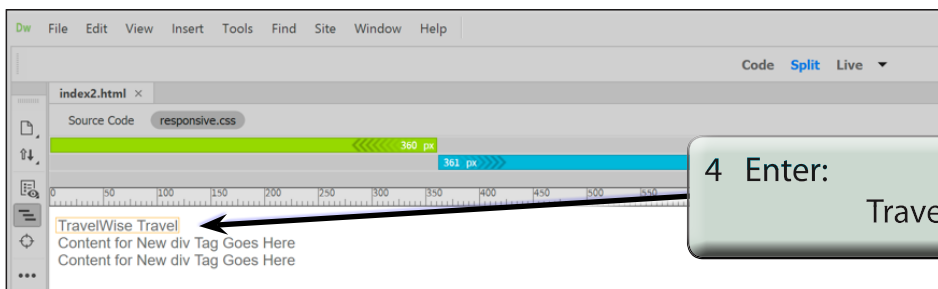
A simple banner for TravelWise Travel will be created so that it displays differently on the three different screen widths.

A Entering the Text

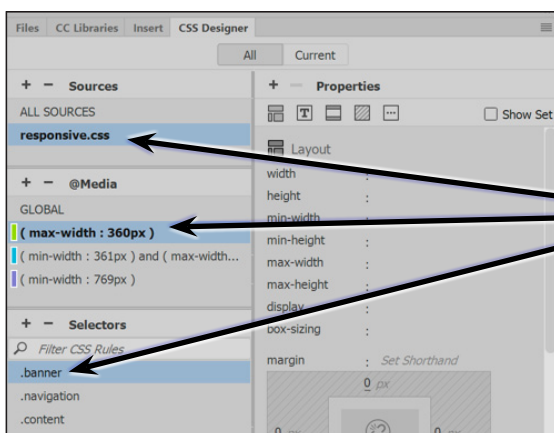
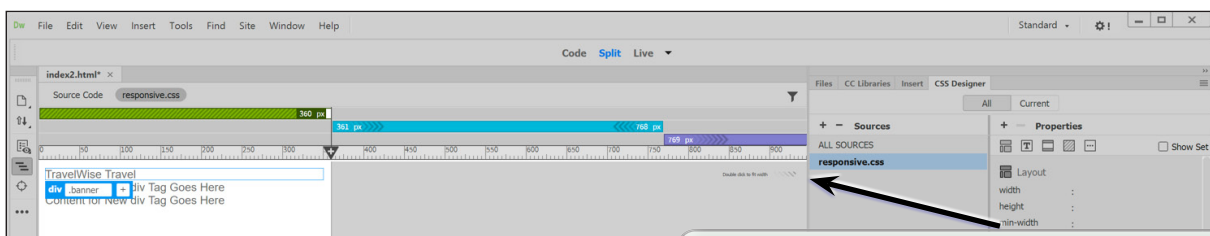
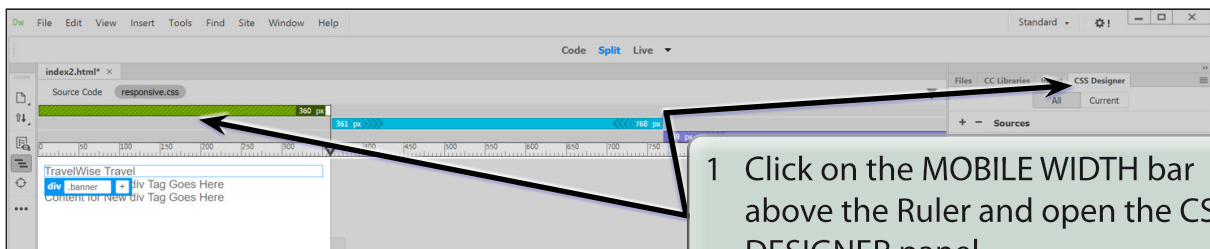
- 1 Load DreamWeaver or close all the open files then set the FILES panel to your TRAVELWISE2 site.
- 2 Open the INDEX2.HTML file and set the screen to LIVE VIEW.

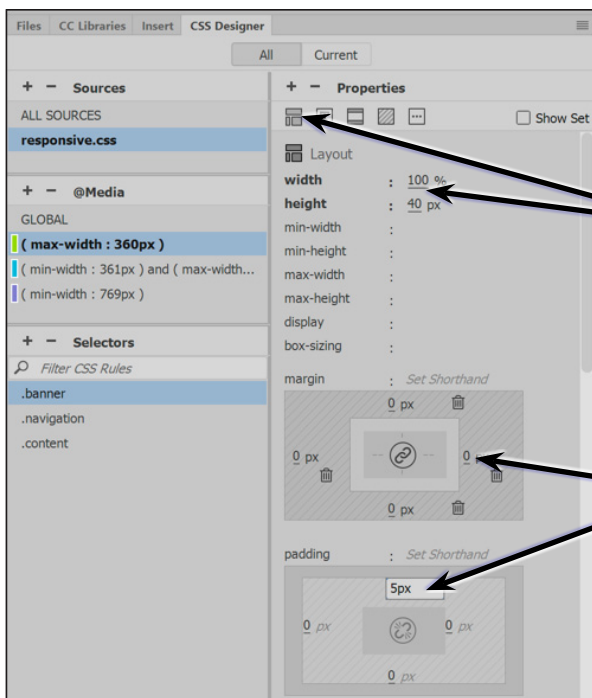


- NOTE:**
- i It can be difficult at first to highlight DIV tag text in LIVE view. You can also double click in the DIV tag then press CTRL+A or COMMAND+A to select all the DIV tag text.
 - ii The sample text in the tag frame needs to be highlighted and the BOLD, ITALIC and HYPERLINK icons need to be displayed at the base of the frame.



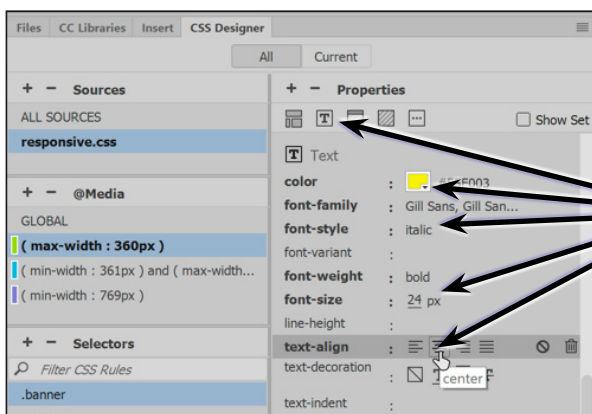
B Formatting the Mobile Banner Style



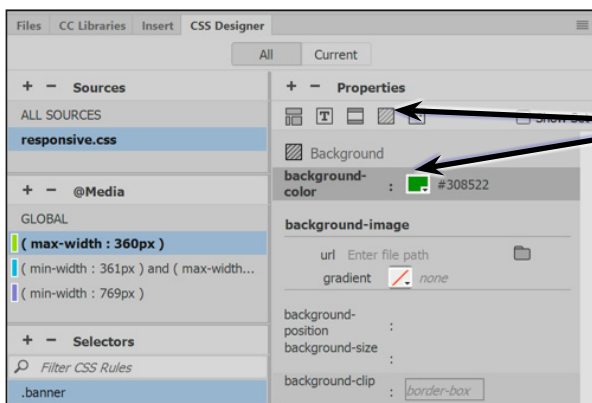


4 In the LAYOUT PROPERTIES section set the WIDTH to 100% and the HEIGHT to 40 px.

5 Click on each of the MARGIN boxes to set them to 0, and set just the TOP PADDING to 5 px.

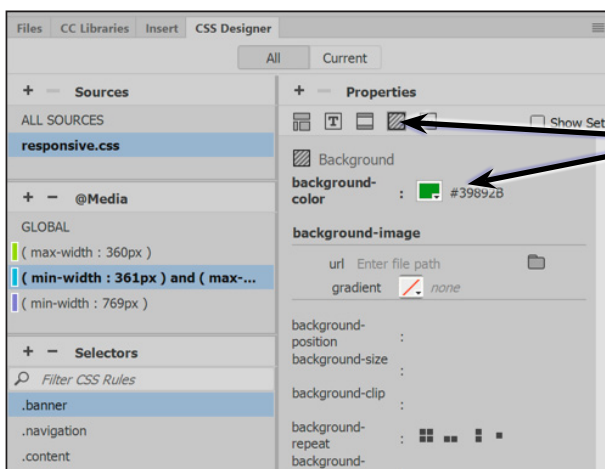
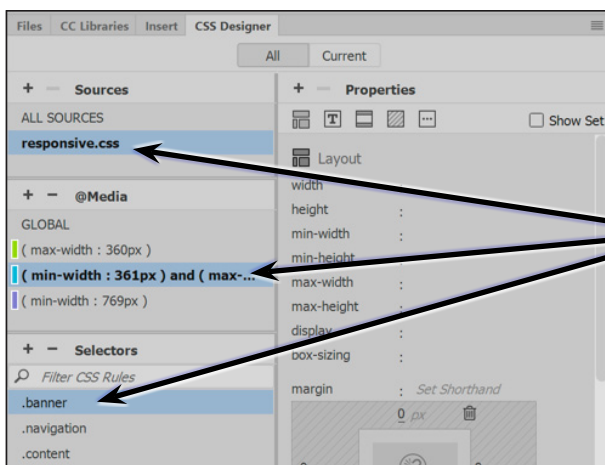
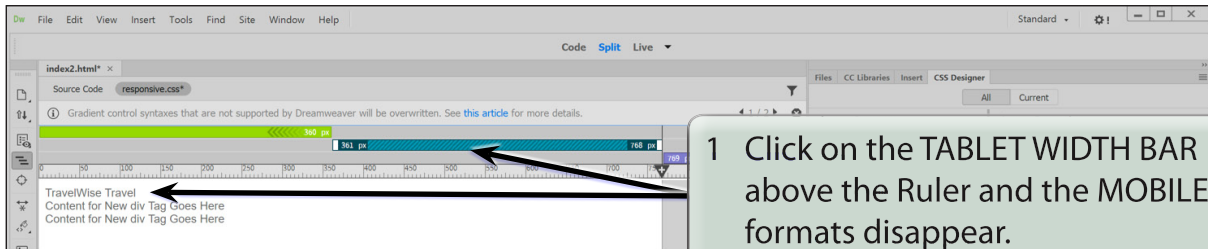


6 Open the TEXT PROPERTIES and set the COLOUR to YELLOW, the FONT-FAMILY to GILL SANS, the FONT-STYLE to ITALIC, the FONT-WEIGHT to BOLD, the FONT-SIZE to 24 px and the TEXT-ALIGN to CENTRE.



7 Open the BACKGROUND PROPERTIES and set the BACKGROUND COLOUR to DARK GREEN.

C Formatting the Tablet Banner Style



NOTE: You could copy the hexadecimal value for the DARK GREEN from the MOBILE settings to insert the same dark green. However, having a slightly different green will make the screen width changes easier to see.

Hiding Content in Responsive Layouts

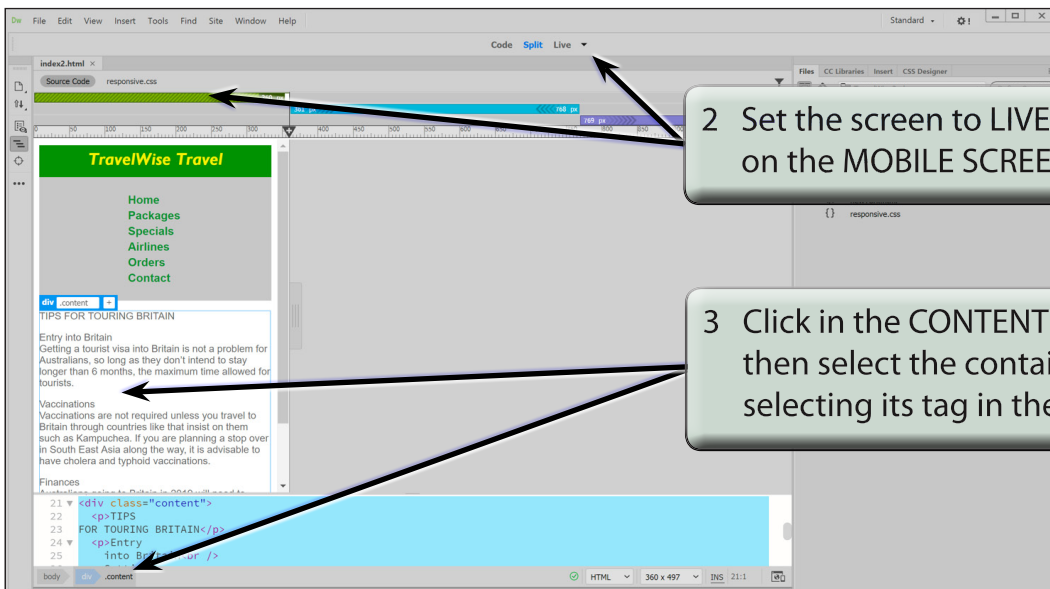
There are times when you want content to display in some screen sizes, but not in others. For example, you may want an image or a secondary navigation bar to show on the tablet and desktop screens, but not on the mobile screen.

Hiding a Secondary Navigation Bar

A Creating the Navigation Bar

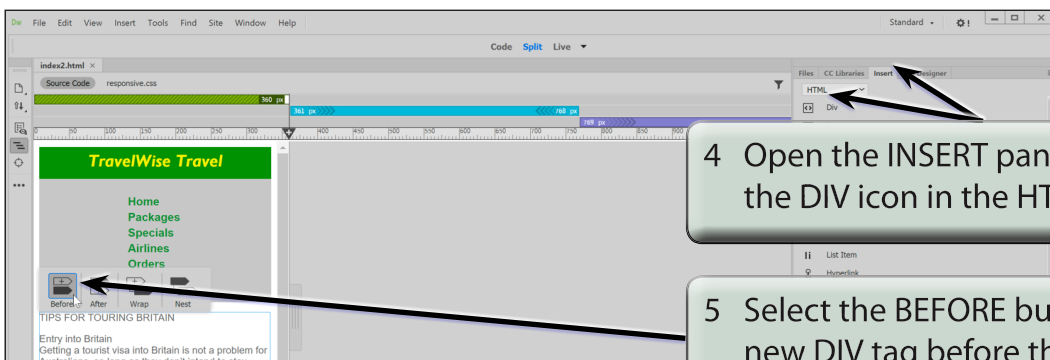
A secondary navigation bar will be added that will display at the left of the tablet and desktop screens only. Normally its DIV tag would be nested with the CONTENT tag, but for simplicity, it will be added above the CONTENT tag and floated to its left.

- 1 Load DreamWeaver or close all the open files, set the FILES panel to your TRAVELWISE2 site and open the INDEX2.HTML file.



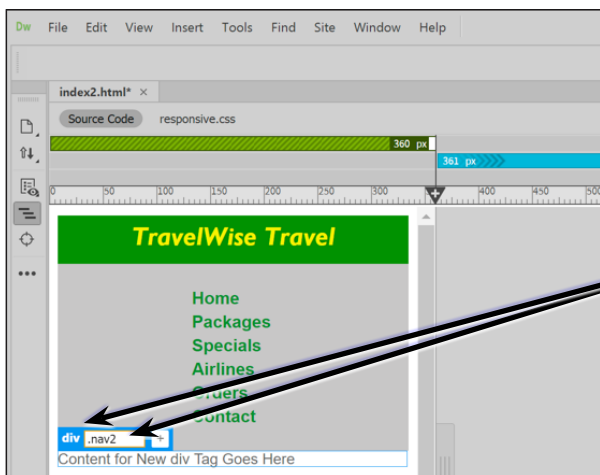
2 Set the screen to LIVE VIEW and click on the MOBILE SCREEN BAR.

3 Click in the CONTENT DIV container, then select the container by selecting its tag in the STATUS BAR.

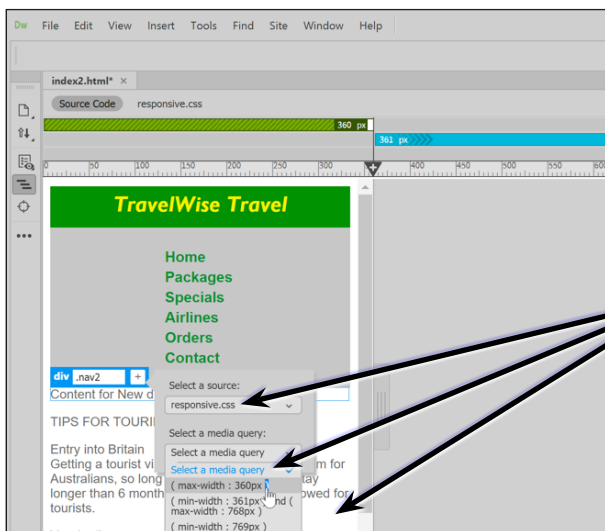


4 Open the INSERT panel and click on the DIV icon in the HTML tools.

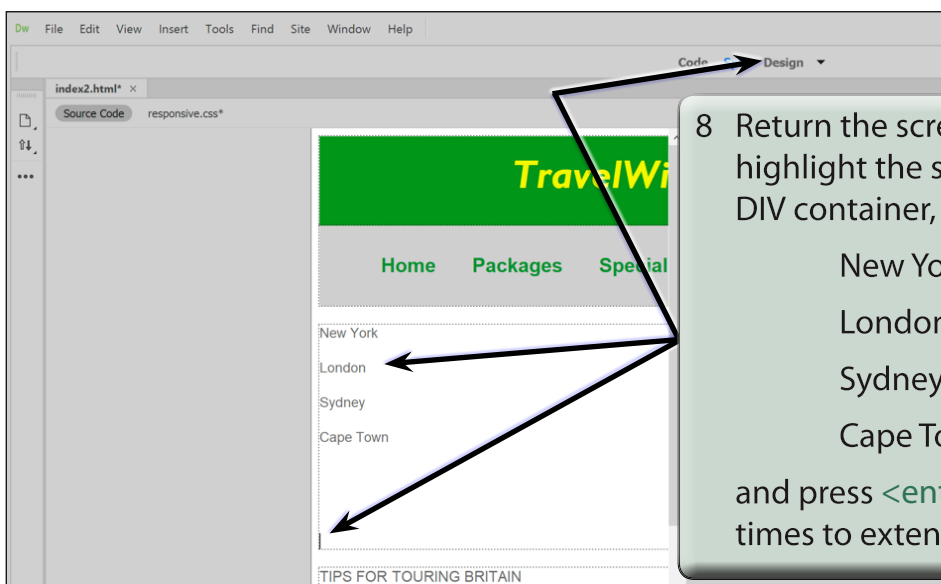
5 Select the BEFORE button to add the new DIV tag before the CONTENT.



- 6 Click on the ADD CLASS/ID button, enter the style name: `.nav2` and press `<enter>` or `<return>`.



- 7 Leave RESPONSIVE.CSS selected in the SOURCE box, select the MAX-WIDTH: 360px in the SELECT A MEDIA QUERY box and click outside the popup panel (but inside the mobile screen).



- 8 Return the screen to DESIGN VIEW, highlight the sample text in the new DIV container, enter:

New York `<enter>`

London `<enter>`

Sydney `<enter>`

Cape Town `<enter>`

and press `<enter>` or `<return>` a few times to extend the container.

Using Behaviours

Java Script is a web programming language that is much more powerful than HTML (HyperText Markup Language). In DreamWeaver you are able to utilise Java Script commands without the need to understand the Java Script language. You do this through the Behaviours panel, which allows you to set events to occur on actions such as mouse presses or a page loading, etc. You have already used Java Script when you created rollover buttons.

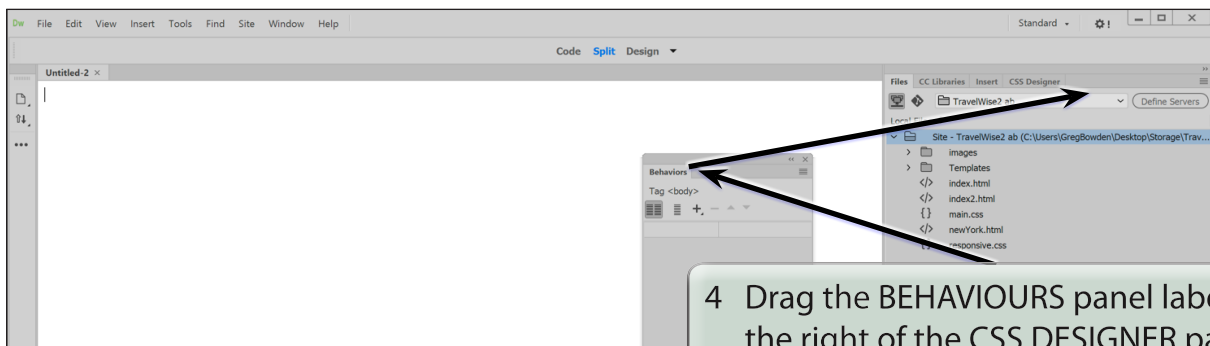
There are two sections to a BEHAVIOUR:

- an **ACTION** which might be a mouse click or a key press, and
- an **EVENT** which might be to add a popup message or validate fields in a form.

The Behaviours Panel

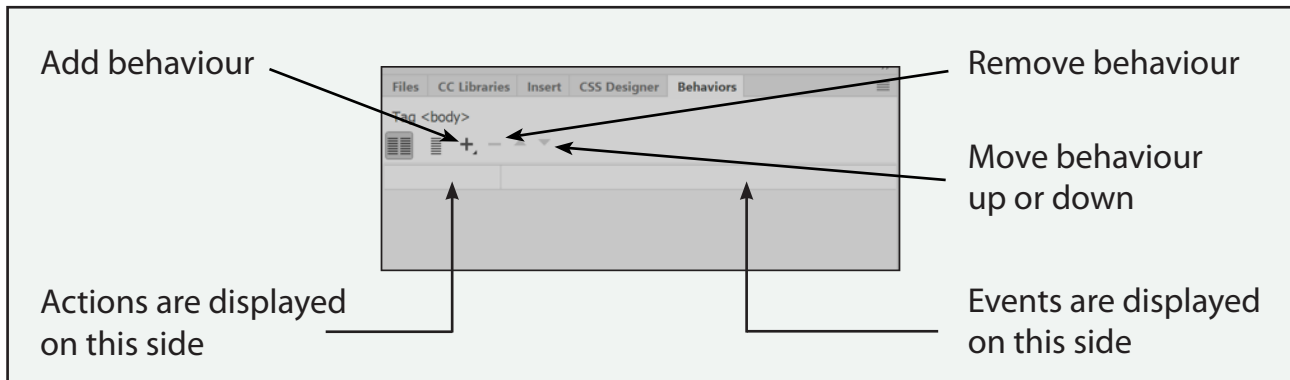
To simplify the use of behaviours, the static web layout will be used.

- 1 Load DreamWeaver or close the current files and set the FILES panel to the TRAVELWISE2 site.
- 2 Start a new HTML page and set the screen to DESIGN VIEW.
- 3 Display the WINDOW menu and select BEHAVIOURS to open the BEHAVIOURS panel (you can also press SHIFT+F4 to open the BEHAVIOURS panel).



- 4 Drag the BEHAVIOURS panel label to the right of the CSS DESIGNER panel label in the FILES panel to 'dock' the panel in the panel group.

- 5 The BEHAVIOURS panel sections are labelled in the following diagram.



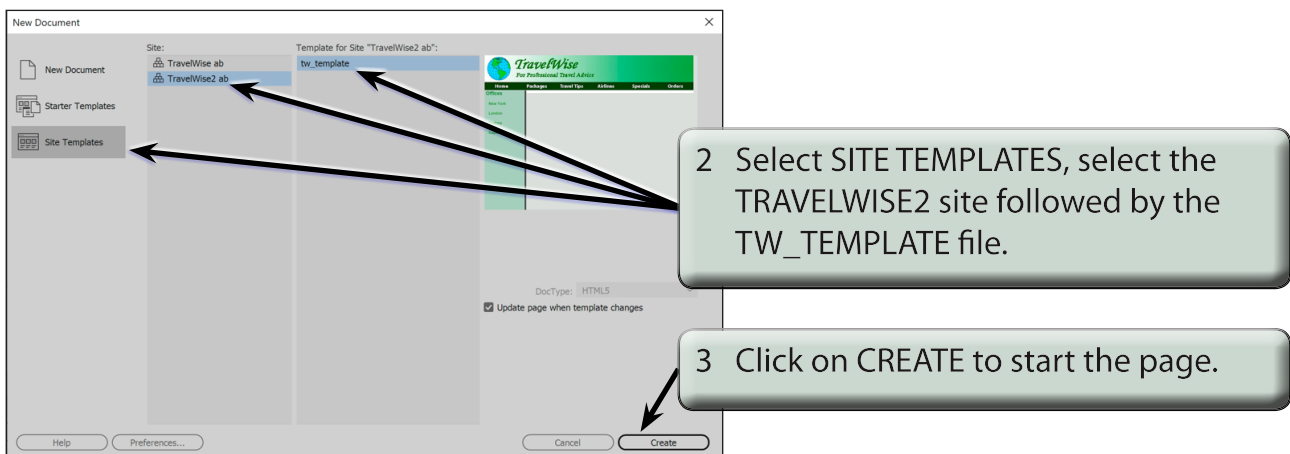
Popup Messages

A variety of popup text messages can be produced using the BEHAVIOURS panel. These popup messages can be set to occur when a mouse is clicked or moved over an image.

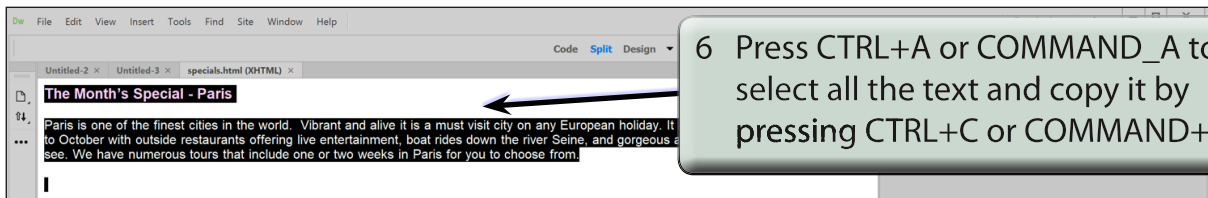
A Setting up a Page

A simple page will be created from the template so that behaviours can be set on it. The content of the page has been prepared for you.

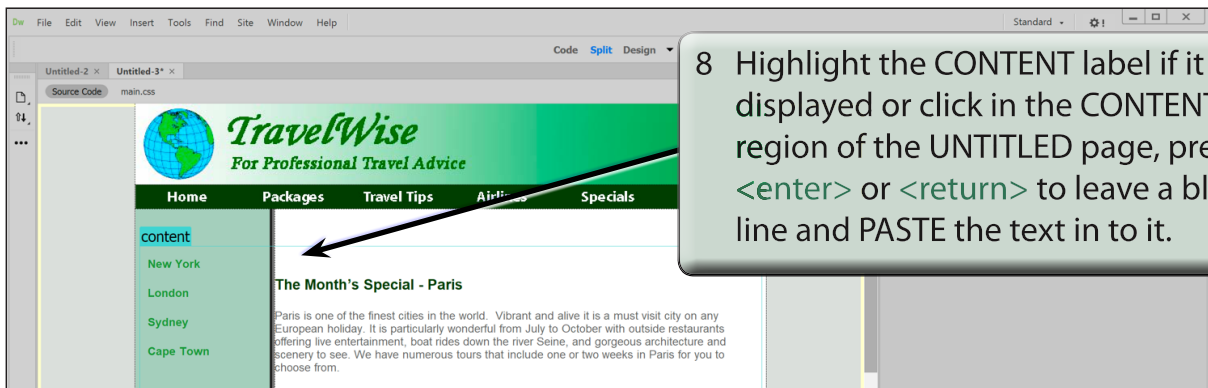
- 1 Display the FILE menu and select NEW.



- 4 Display the FILE menu and select OPEN.
- 5 Access the CHAPTER 20 folder of the DWcc SUPPORT FILES and open the SPECIALS.HTML page.



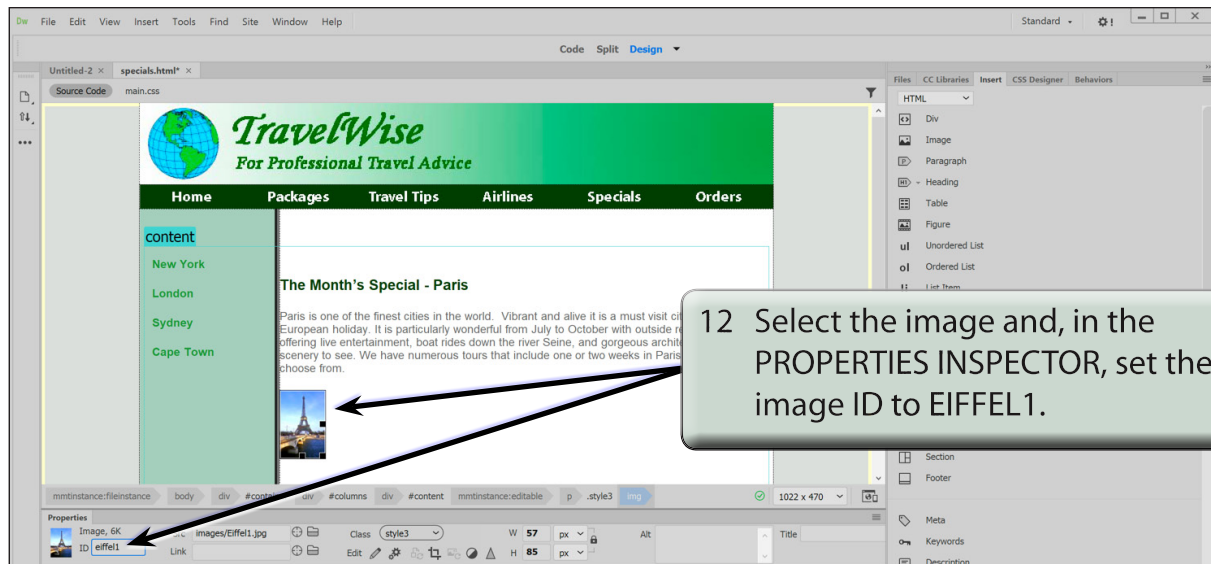
- 7 Close the SPECIALS.HTML page.



- 9 Save the page in your TRAVELWISE2 folder as:
specials.html

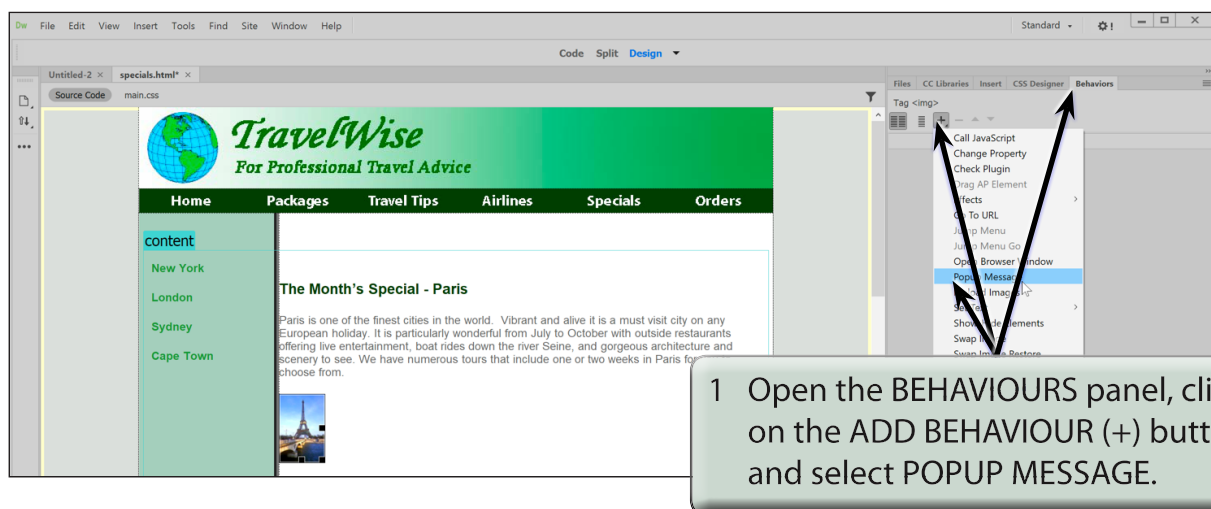


- 11 Insert the EIFFEL1 image from the CHAPTER 20 folder of the DWcc SUPPORT FILES and save the image in the IMAGES folder of your TRAVELWISE2 site.



B Popup Dialogue Boxes

You can set a behaviour to show a message when a user clicks on the image.



Editing and Importing Tools

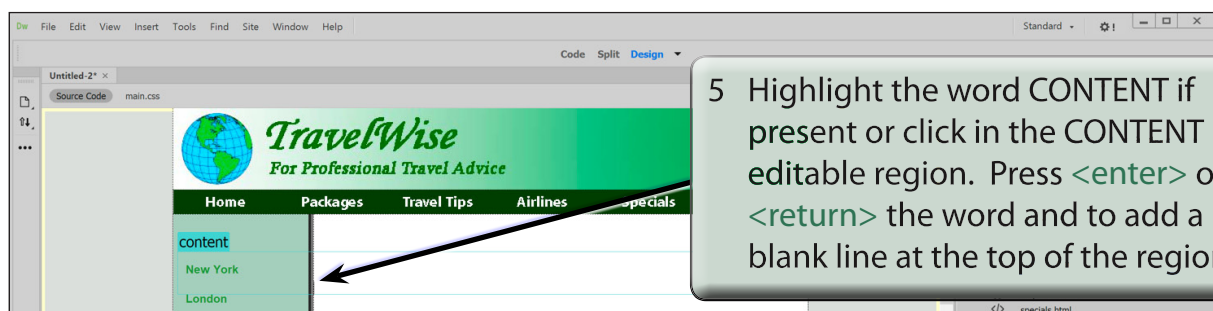
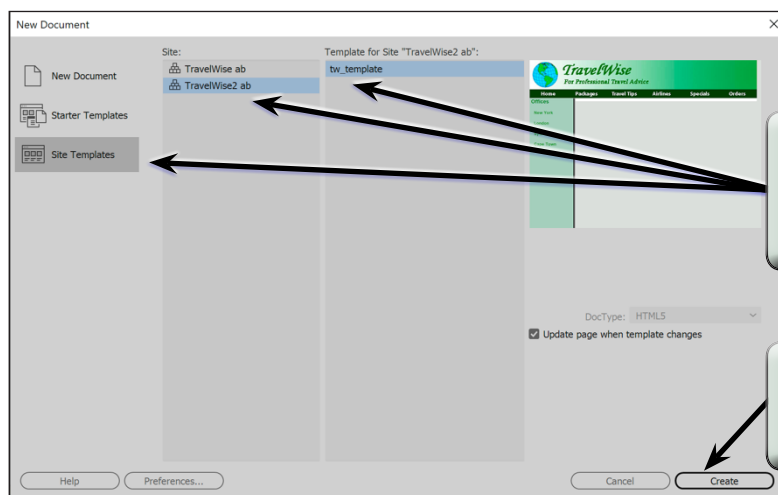
DreamWeaver allows you to make limited changes to graphics without needing to open a graphics editing program and it also allows you import fully formatted Microsoft Word and Microsoft Excel documents.

In this chapter you will create another SPECIALS page that provides information about tour packages on a selected city.

Starting the Page

The page will be created from the TW_TEMPLATE file.

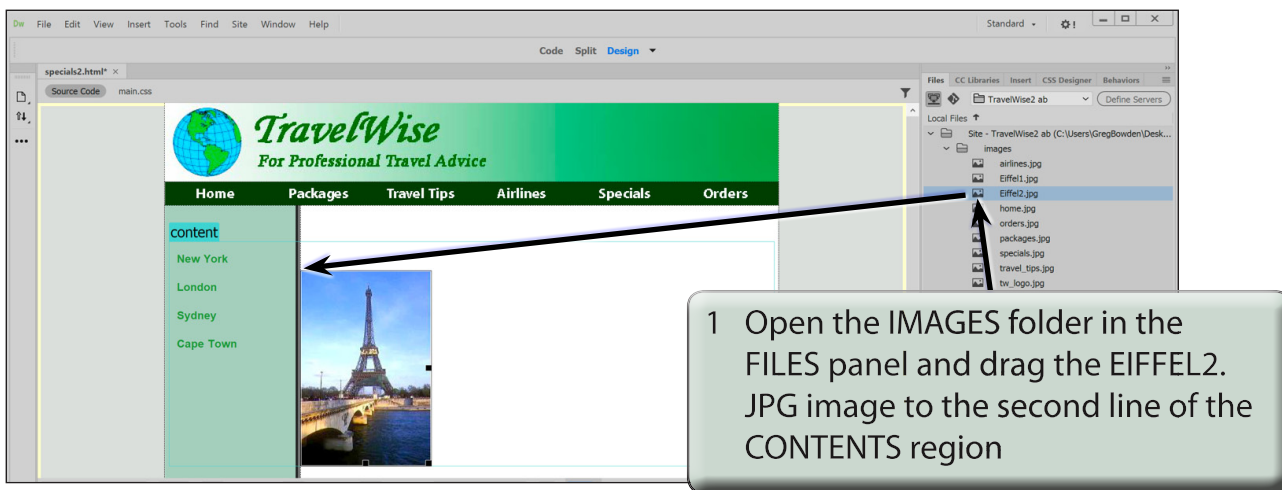
- 1 Load DreamWeaver or close the current page and set the FILES panel to your TRAVELWISE2 site.
- 2 Select CREATE NEW from the WELCOME screen or select NEW from the FILE menu.



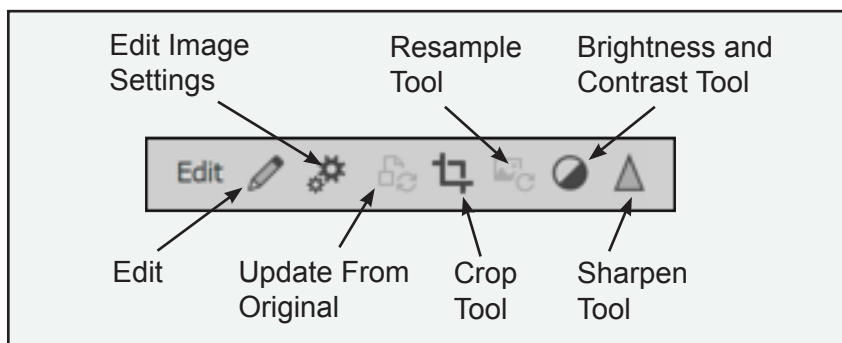
- 6 Save the page in your TRAVELWISE2 folder as:
specials2.html

Editing Images

When you need to make some minor alterations to images, those changes can be carried out within DreamWeaver. For more detailed editing a graphics editing program, such as Adobe Photoshop, needs to be used.



- 2 With the image selected the image editing tools are displayed in the PROPERTIES INSPECTOR. They have the following meaning:



- 3 The first three tools EDIT, EDIT IMAGE SETTINGS and UPDATE FROM ORIGINAL, open the original graphics programs such as Photoshop where detailed changes can be made. These tools will be used in the next chapter. The other four tools are used within DreamWeaver.

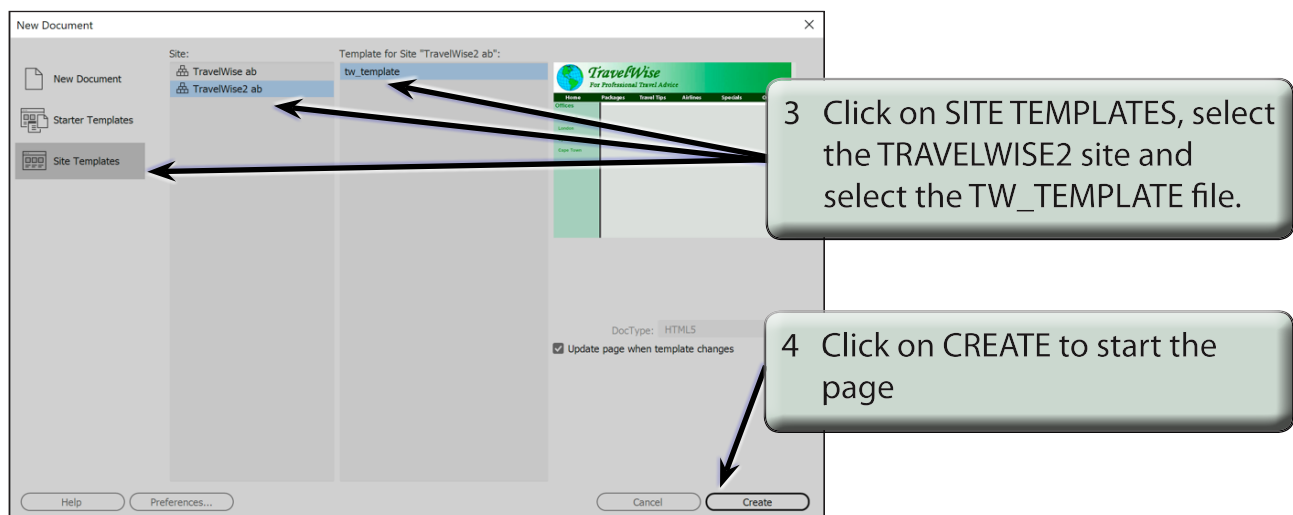
Inserting Media

DreamWeaver allows you to directly import media created in range of other programs such as Adobe Photoshop, Animate and FireWorks. Photoshop documents can be imported directly into DreamWeaver, compressed and then modified and updated directly from within DreamWeaver. Videos can also be imported into DreamWeaver pages either directly from YouTube or from videos that you create yourself.

Creating a Page

A simple page based on the TravelWise2 template will be created for the London office of TravelWise. Some Photoshop and video media will then be inserted into the page.

- 1 Load DreamWeaver or close the current files and set the FILES panel to your TRAVELWISE2 site.
- 2 Select CREATE NEW from the WELCOME screen or select NEW from the FILE menu.



- 5 Set the screen to DESIGN VIEW and save the page in your TRAVELWISE2 folder as:
london.html

Inserting Smart Photoshop Objects

When you insert an image saved as a Photoshop document (PSD), DreamWeaver will automatically compress the file and link it to Photoshop so that it can be updated at any time.

A Inserting the Object

The screenshot shows the Adobe DreamWeaver CC interface with a web page titled 'london.html' open. The page has a green header with the 'TravelWise' logo and navigation links: Home, Packages, Travel Tips, Airlines, and Specials. A sidebar on the left lists locations: New York, London, Sydney, and Cape Town. The main content area contains the text 'Welcome to TravelWise'. The Properties Inspector at the bottom shows the 'HTML' tab selected, with the 'Class' dropdown set to 'sub_head'. A callout box explains that the 'CONTENT' label in the sidebar should be highlighted and the text 'Welcome to TravelWise' entered. Another callout box explains that the text should be set to the 'SUB_HEAD' style using the 'CLASS' box in the 'HTML' section of the 'PROPERTIES INSPECTOR'. A third callout box shows the 'Insert' panel with the 'Image' button highlighted. A fourth callout box explains that the cursor should be positioned at the line under the sub-heading.

- 1 Highlight the CONTENT label if it is displayed or click in the CONTENT region, press `<enter>` or `<return>` to leave a blank line and enter:
Welcome to TravelWise `<enter>`
- 2 Highlight the text and set it to the SUB_HEAD style using the CLASS box in the HTML section of the PROPERTIES INSPECTOR.
- 3 Position the cursor at the line under the sub-heading.
- 4 In the HTML tools of the INSERT panel click on the IMAGE button.

Code Snippets

Code Snippets are small packets of HTML code that can be inserted into web pages at any time or at any position. An example of where snippets of code might be used would be a series of advertisements for a company. They may want one advertisement on some pages and a different advertisement on other pages, or they may only want to display an advertisement at certain times of the year. It would be annoying to have to recreate the advertisement each time. It is much easier to set each advertisement as a Snippet and insert or remove them as required.

DreamWeaver provides prepared snippets of common web components such as navigation bars or you can create and store your own snippets.

Preset Snippets

DreamWeaver comes with a large number of preset snippets.

A Opening the Snippets Panel

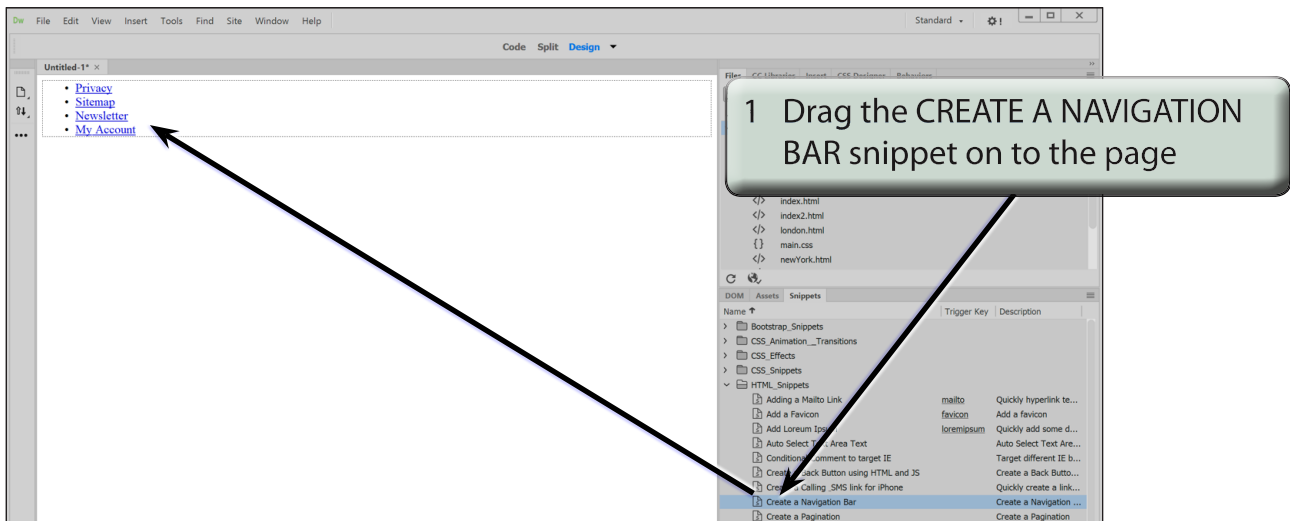
- 1 Load DreamWeaver or close the current files and set the FILES panel to your TRAVELWISE2 site.
- 2 Select CREATE NEW from the WELCOME screen or select NEW from the FILE menu and start a HTML page.
- 3 Expand the SNIPPETS panel in the PANEL GROUP. It is next to the ASSETS panel.

4 Widen the PANEL GROUP by dragging its left border to the left.

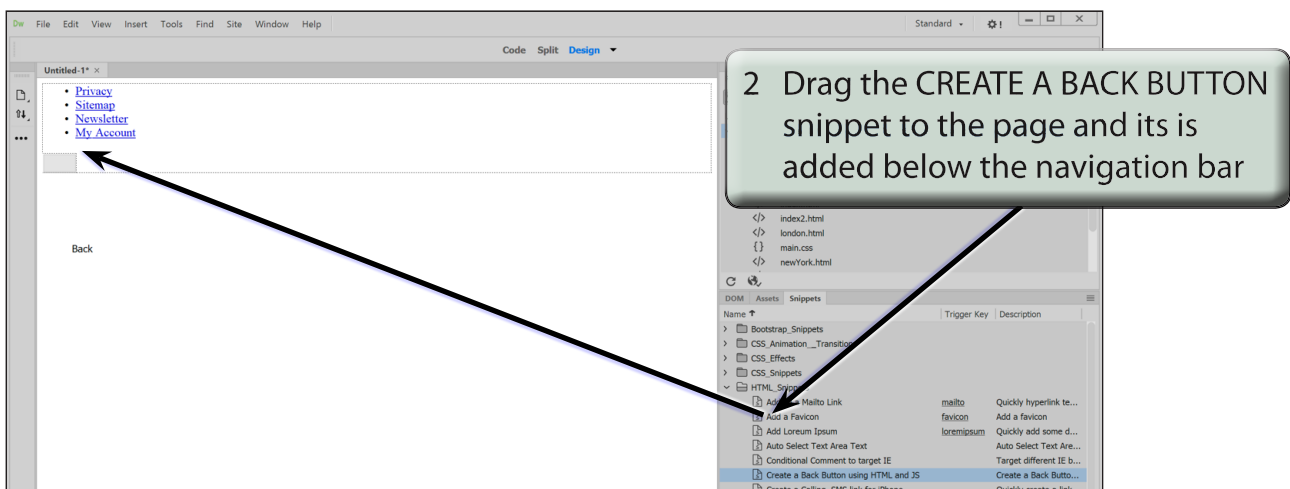
Name	Trigger Key	Description
Bootstrap_Snippets		
CSS_Animation_Transitions		
CSS_Effects		
CSS_Snippets		
HTML_Snippets		
Add a Favicon	mailto	Quickly hyperlink te...
Add a Favicon	favicon	Add a favicon
Add Lorem Ipsum	loremipsum	Quickly add some d...

5 Expand the HTML_SNIPPETS and widen the NAME column by dragging the NAME border to the right so that you can see the full names of the snippets.

B Inserting Prepared Snippets



NOTE: The NAVIGATION BAR snippet is a group of formatted text links. All you would need to do is change the text and set the links to complete the navigation bar.



- 3 Try adding some of the other snippets that you might think that you would want to use in your web sites.

Useful Tools

There are some extra tools that are provided in DreamWeaver CC that you might like to make use of. The size of the DreamWeaver work page can be adjusted to help create the type of pages you want, CSS Transitions can be applied to CSS styles to make them animate and Tab Panels can be used to increase the content provided in pages. There are also sample template designs in the WELCOME screen that can be used.

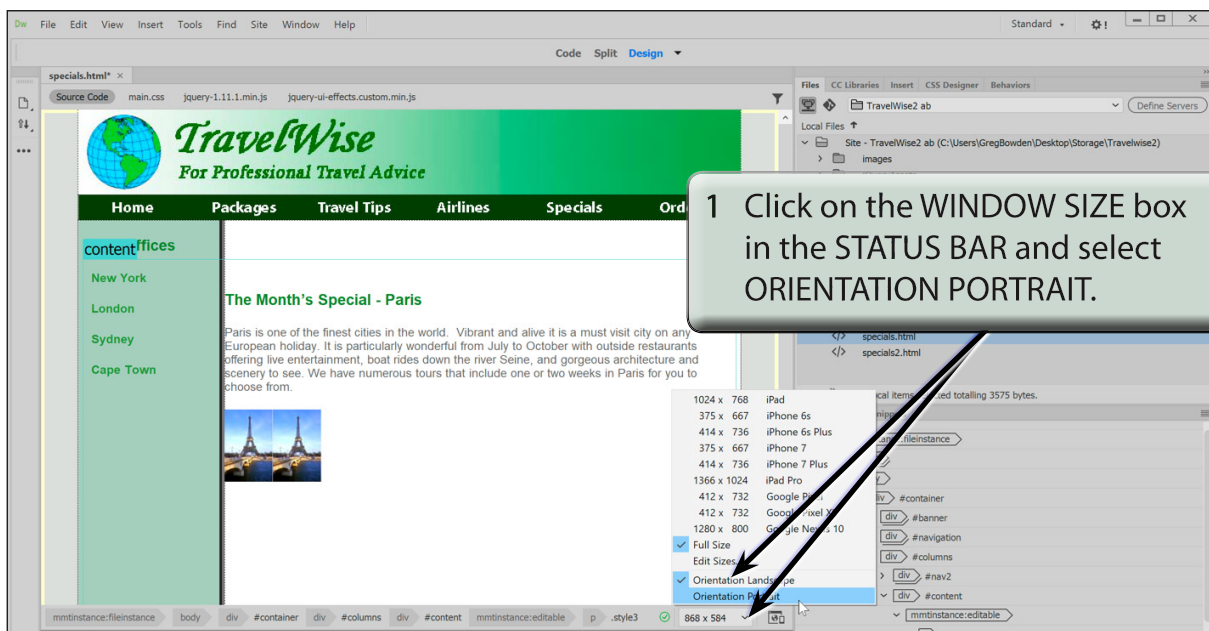
Screen Displays

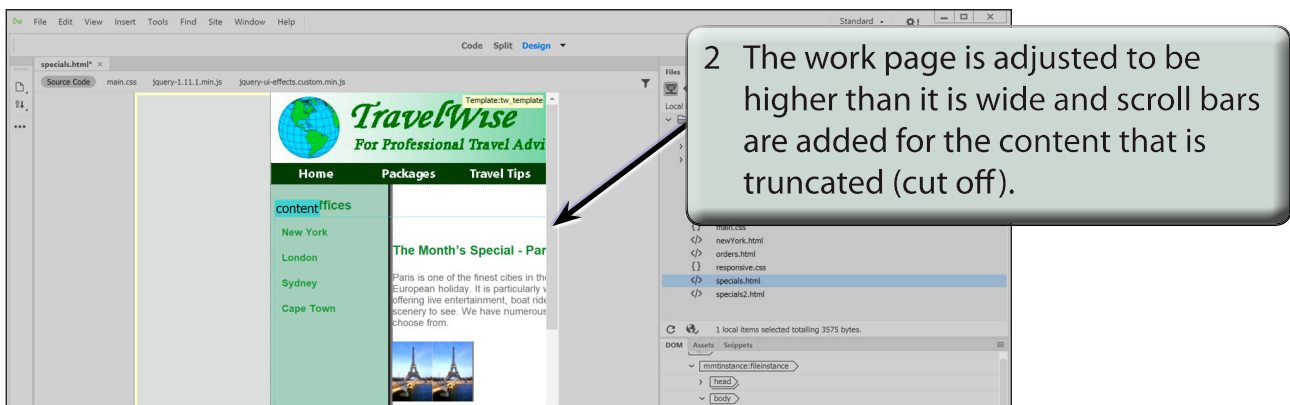
The WINDOW SIZE box in the STATUS BAR allows you to control the size of the work page.

- 1 Load DreamWeaver CC or close the current pages.
- 2 Open the FILES panel and set it to the TRAVELWISE2 site.
- 3 Open the SPECIALS.HTML page and set the screen to DESIGN VIEW.

A Portrait Orientation

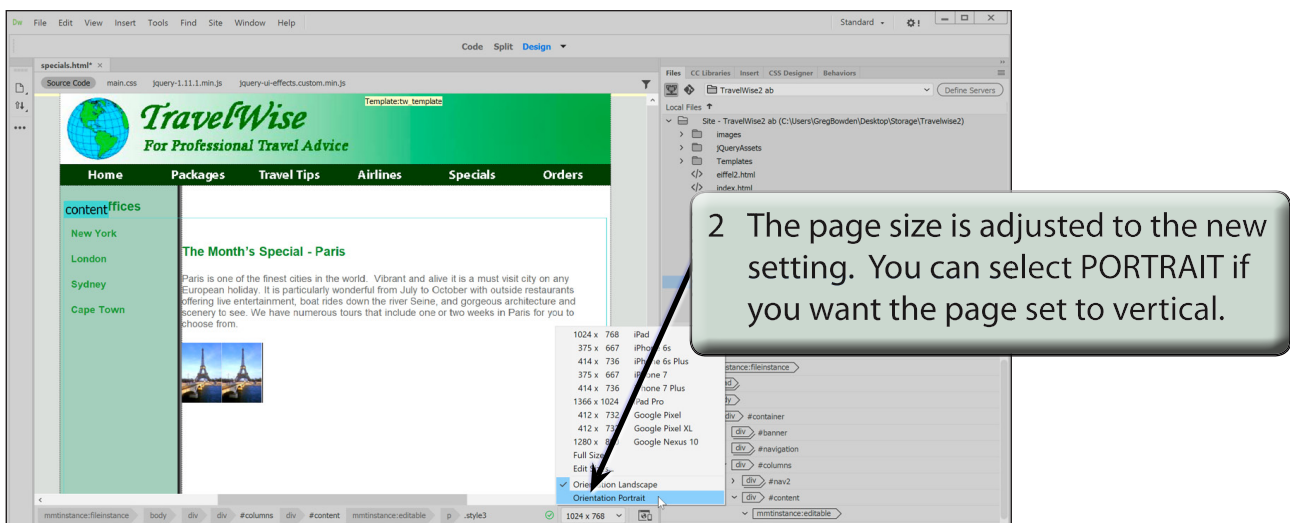
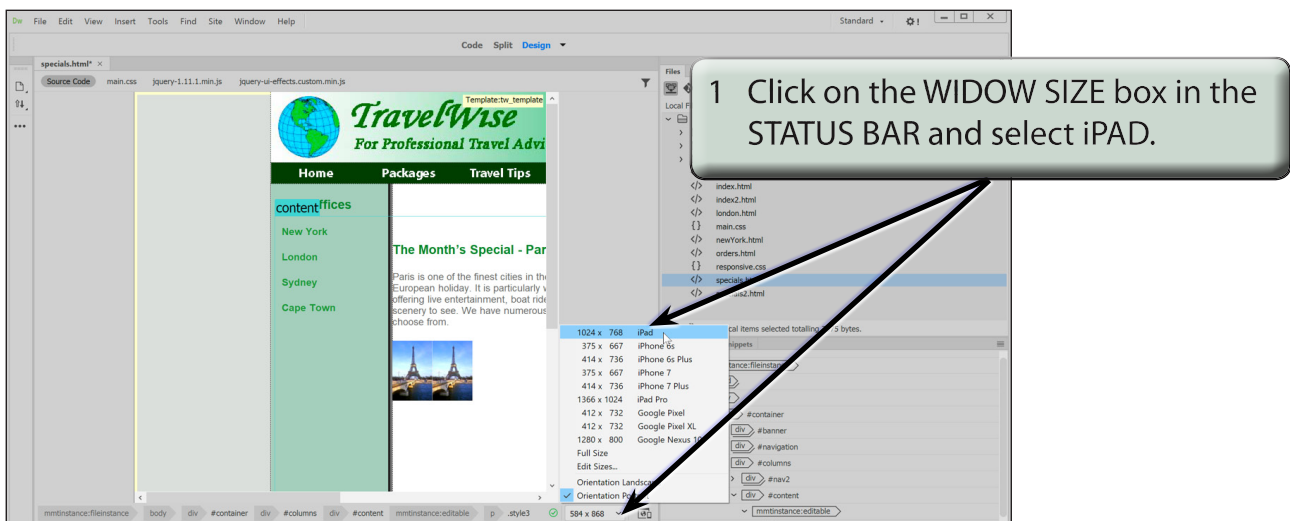
The default work page is set to landscape orientation because computer screens are wider than they are high. When creating pages specifically for mobile devices or tablets you might prefer to set the work page to portrait orientation to match the screens of those devices when they are used vertically.

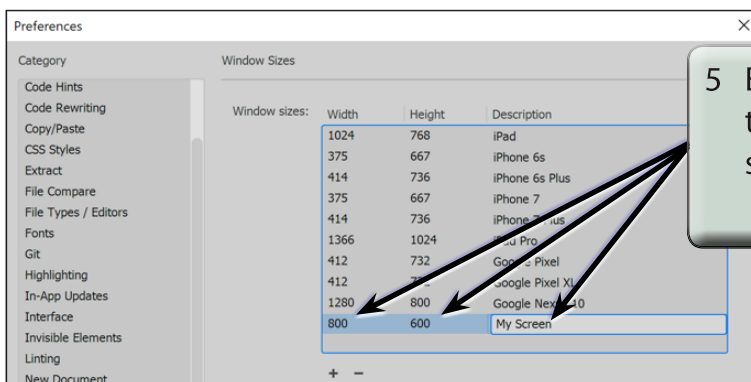
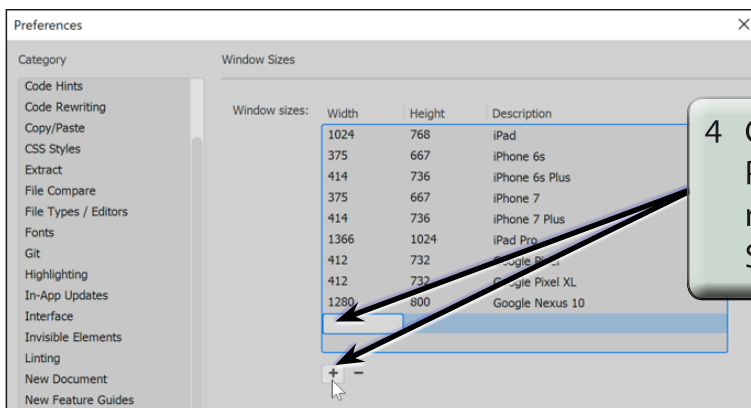
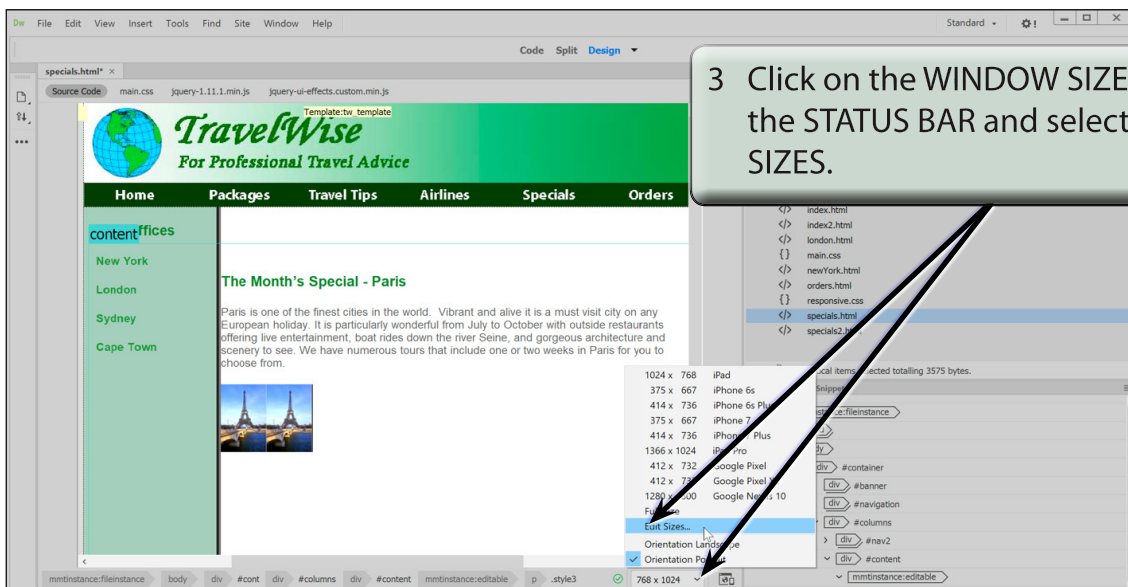




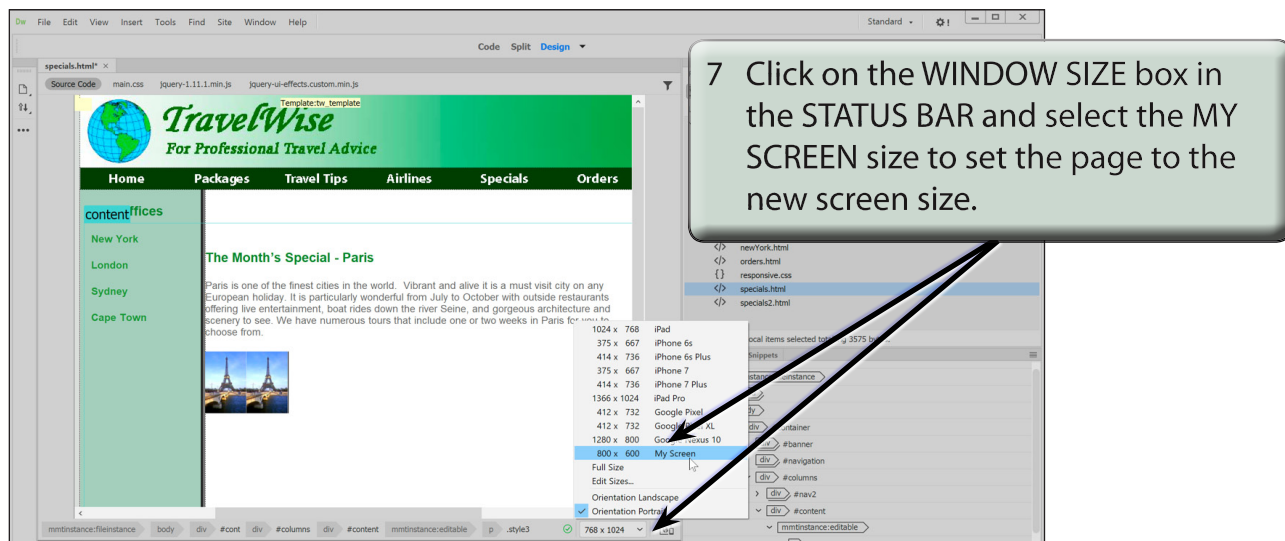
B Custom Page Displays

There are a series of pre-prepared page sizes that can be applied to your pages or you can create your own sizes.





6 Select APPLY then CLOSE to return to the work page.



C Deleting Page Sizes

The page sizes in the WINDOW SIZE menu can be edited or deleted. Let's delete the custom page size you just created.

